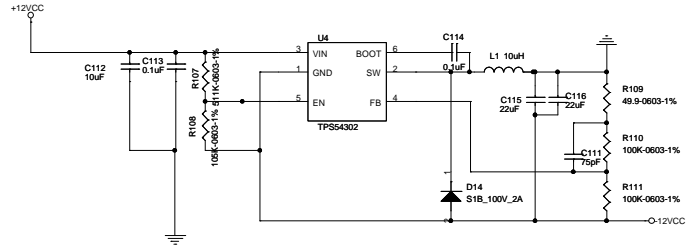
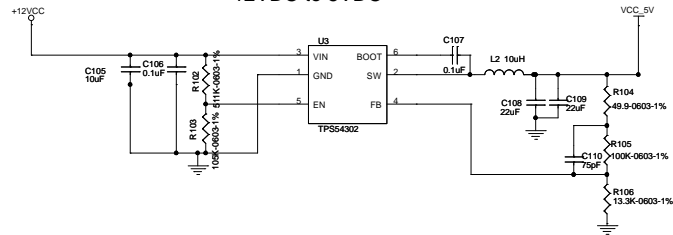


12VDC to -12VDC



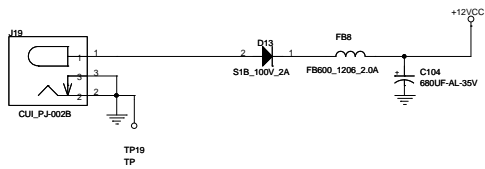
- Q1. What is the value for R107 and R108 in this +12 to -12V design?
 Q2. Is the connection for EN pin with -12V and Res divider OK?

12VDC to 5VDC



12VDC to 12VDC

DC 12V 2A INPUT



File		
<Title>		
Size	Document Number	Rev
C	<Doc>	AD
Date:	Thursday, February 13, 2020	Sheet 1 of 1