

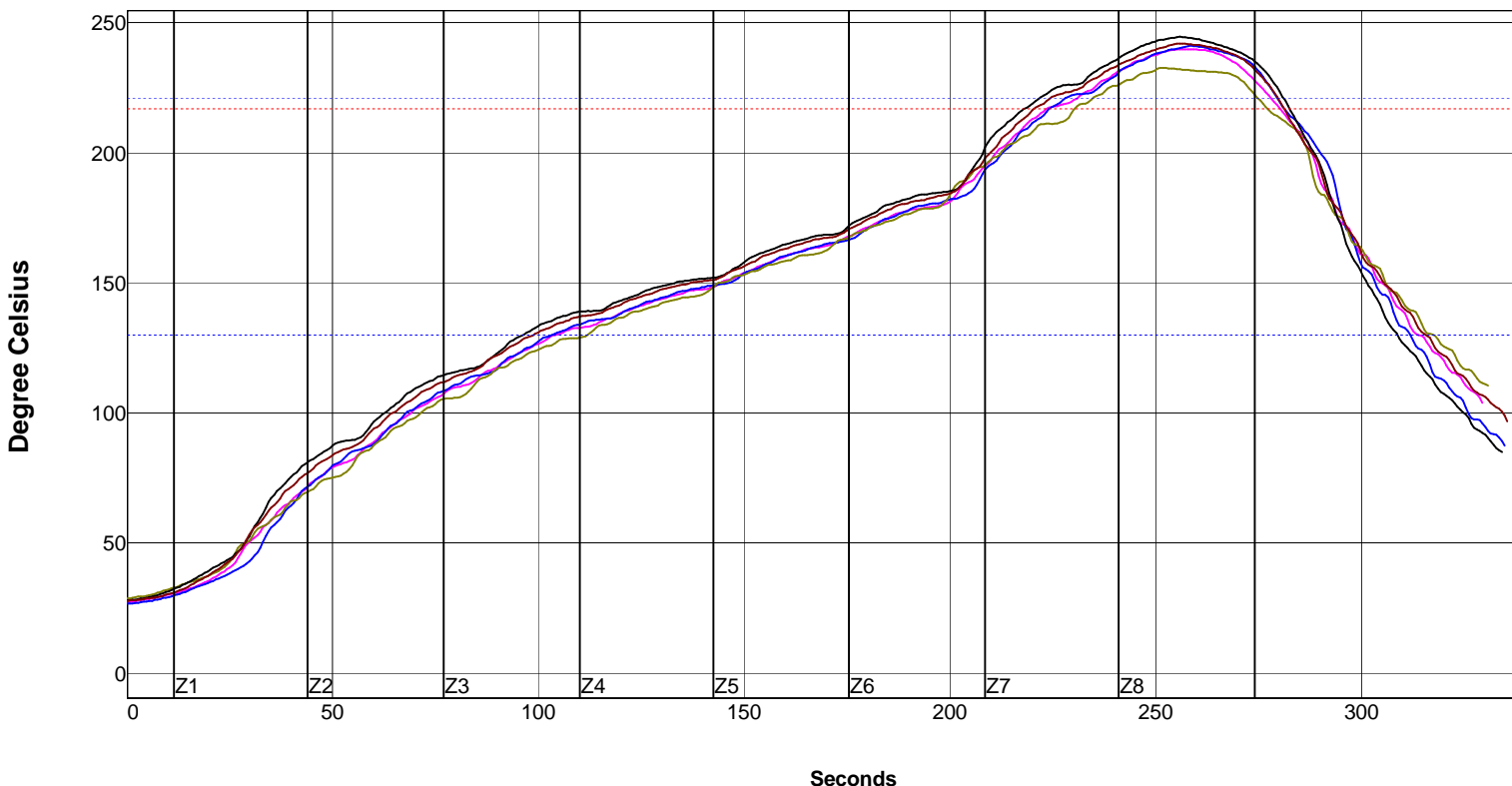
Company: UC20SAC305-TOP

Site:

Oven Name: PY100A HBF-1C

Process Window Name: essai SAC305

Setpoints (Degree Celsius)								
Zone	1	2	3	4	5	6	7	8
Top	105	130	150	160	180	198	257	265
Bottom	105	130	150	160	180	198	257	265
Conveyor Speed (cm/min): 65.0								



PW= 92%	Max Rising Slope	Max Falling Slope	Soak Time 130-221°C	Reflow Time /217°C	Peak Temp					
DPACK	1.37	64%	-2.92	-17%	126.59	69%	56.63	-48%	239.92	-12%
RESISTANCE805	1.48	75%	-3.41	-36%	124.73	63%	57.02	-47%	241.21	2%
MICRO	1.29	54%	-2.72	-9%	122.76	55%	46.81	-92%	232.72	-92%
74HC08	1.47	75%	-3.53	-41%	125.51	65%	64.38	-14%	244.67	41%
RESISTANCE1206	1.43	70%	-2.97	-19%	125.58	66%	60.81	-30%	242.00	11%
Delta	0.19		0.81		3.83		17.57		11.95	

Process Window:

Process Window:	essai SAC305		
Statistic Name	Low Limit	High Limit	Units
Max Rising Slope (Target=0.8) (Calculate Slope over 40 Seconds)	0.0	1.7	Degrees/Second
Max Falling Slope (Calculate Slope over 20 Seconds)	-5.0	0.0	Degrees/Second
Soak Time 130-221°C	80	135	Seconds
Time Above Reflow - 217°C	45	90	Seconds
Peak Temperature	232	250	Degree Celsius

Description:

Profiled Using Profiling Software Technology