

1

UNLESS OTHERWISE SPECIFIED, TESTING PERFORMED AT 25°C ±5°C

1. TURNS RATIO PER SCHEMATIC: 500 Hz, 1.0 VRMS

$$(1^{\circ}-2): (4^{\circ}-3); 1:1 = 1.0 \pm 1\%$$

2. POLARITY (100%): 50 Hz, 1.0 VRMS

1° AND 4° IN PHASE

3. INDUCTANCE (SAMPLE): 50 Hz, 1.0 VRMS, 0 ADC

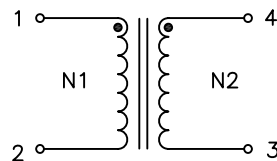
(1-2) = (4-3) = 4.0H TYPICAL

4. DCR: (SAMPLE)

(1-2) = (4-3) = 70 OHMS TYPICAL, 78 OHMS MAXIMUM

5. HIPOT (100%): 50/60 Hz

(1,2) TO (3,4) : 3000 VRMS, 1 MINUTE



SCHEMATIC

DO NOT SCALE DRAWING

DWG. NO.	
----------	--

RE1

SHEET 4 OF 7

PA3000NL

4

3

2

1

NOTICE: THE INFORMATION AND
DESIGN CONTAINED HEREIN IS THE
PROPERTY OF PULSE WHO
RESERVES ALL RIGHTS THERETO.

TEST NOTES:

UNLESS OTHERWISE SPECIFIED, TESTING PERFORMED AT 25°C ±5°C
ASSEMBLE MEASUREMENT SET UP FOR BOTH, THE PHASE AND
RATIO TESTS AS PER FIGURE 1 IN PAGE 6.

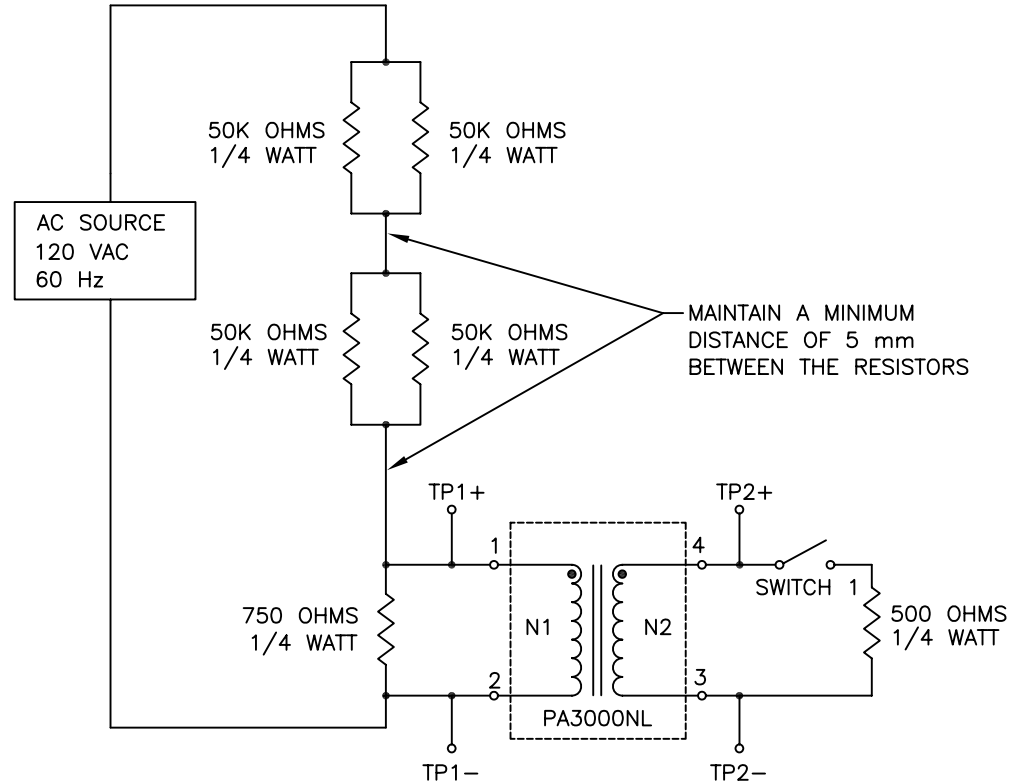
RESULTS OF MEASUREMENTS SHALL BE AS SHOWN BELOW:

6. PHASE DISPLACEMENT (100%): EQUIPMENT REQUIRED:

- AC SOURCE (60 Hz, 120 VAC)
 - PHASE METER
 - TEST FIXTURE, ITEM 17 WITH SWITCH 1 CLOSED
 - MEASURE PHASE FROM TP1 TO TP2
- $(1^*-2):(4^*-3) = 0.0^\circ \pm 1.5^\circ$ [AT 60 Hz, 85 VAC]
 $(1^*-2):(4^*-3) = 0.0^\circ \pm 1.25^\circ$ [AT 60 Hz, 120 VAC]
 $(1^*-2):(4^*-3) = 0.0^\circ \pm 1.0^\circ$ [AT 60 Hz, 140 VAC]

7. VOLTAGE RATIO (100%): EQUIPMENT REQUIRED:

- AC SOURCE (60 Hz, 120 VAC)
 - AC VOLT METER 1 ON INPUT @ TP1+ AND TP1-
 - AC VOLT METER 2 ON OUTPUT @ TP2+ AND TP2-
 - TEST FIXTURE, ITEM 17 WITH SWITCH 1 OPEN
 - MEASURE RATIO OF INPUT AND OUTPUT VOLTAGE
- $(1^*-2)/(4^*-3) = 1.00 \pm 4.0\%$ [60 Hz, 85 VAC]
 $(1^*-2)/(4^*-3) = 1.00 \pm 4.0\%$ [60 Hz, 120 VAC]
 $(1^*-2)/(4^*-3) = 1.00 \pm 4.0\%$ [60 Hz, 140 VAC]



TEST FIXTURE SCHEMATIC

DESIGN NOTES:

- OPERATING VOLTAGE: 0 – 3 VRMS
- NL DENOTES ROHS 6 OF 6

UNLESS OTHERWISE SPECIFIED, ALL
DIMENSIONS ARE IN INCHES
TOLERANCES ARE:

DECIMALS ANGLES
 .XX ±.01 ± 1°
 .XXX ±.005
 DO NOT SCALE DRAWING

SIZE CAGE CODE
 B101961
 SCALE NONE CADD FILE

DWG. NO.

PA3000NL

RE1

10

PA3000NL-5

SHEET 5 OF 7

4

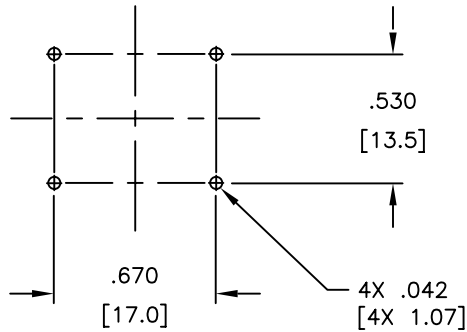
3

2

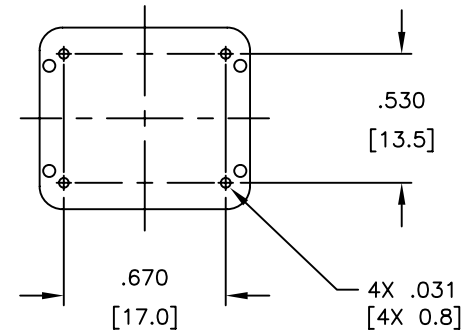
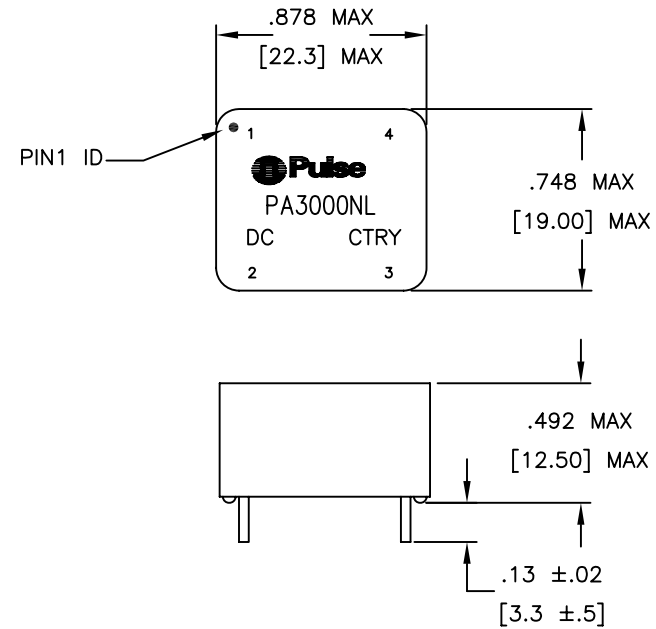
1

PA3000NL

NOTICE: THE INFORMATION AND DESIGN CONTAINED HEREIN IS THE PROPERTY OF PULSE WHO RESERVES ALL RIGHTS THERETO.



RECOMMENDED PAD LAYOUT



FINAL OUTLINE

THE DESIGN OF THIS PART IS INTENDED TO MEET THE BELOW LISTED SAFETY AGENCY REQUIREMENTS:

- PRI TO SEC INSULATION: 3KV
- PRI TO SEC CREEPAGE: N/A SINCE COMPONENT IS COMPLETELY ENCAPSULATED
- PRI TO SEC CLEARANCE: N/A SINCE COMPONENT IS COMPLETELY ENCAPSULATED
- SPACING BETWEEN PRIMARY & SECONDARY WINDINGS 1 MILLIMETER MINIMUM

UNLESS OTHERWISE SPECIFIED, ALL DIMENSIONS ARE IN INCHES TOLERANCES ARE:

DECIMALS ANGLES
 .XX ±.01 ± 1°
 .XXX ±.005
 DO NOT SCALE DRAWING

SIZE CAGE CODE
 B01961
 SCALE NONE CADD FILE

DWG. NO. PA3000NL
 PA3000NL-7
 SHEET 7 OF 7

REV 10