



<b>CUSTOMER</b>	:		
<b>PART NO.</b>	:	SMPC0420HP-R47M	<b>REVISION</b>
<b>DRAWN NO.</b>	:		<b>DATE</b> 2018-2-14
<b>DESCRIPOTION</b>	:		

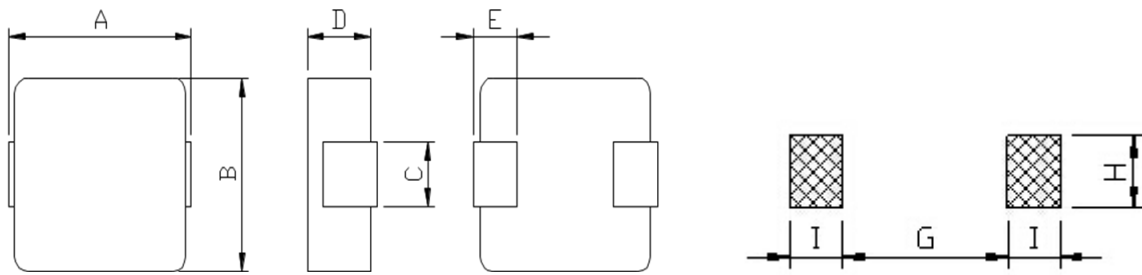
**INDEX :**

LIST ITEM	PAGES
1.SHAPE&DIMENSION	1 OF 3
2.ELECTRICAL SPECFCATIONS	2 OF 3
3. TEST DATD FOR PREPRODUCTION	3 OF 3

<b>DEKE ELECTRONICS CO., LTD.</b>	<b>CHECKED</b>	<b>BY :</b>	
	<b>MADE</b>	<b>BY :</b>	

CUSTOMER PART NO. DRAWN NO. DESCRIPTION	_____	PAGE	1
	SMPC0420HP-R47M	REVISION	
	_____	DATE	2018-2-14
	_____		

**1.SHAPE & DIMENSION**

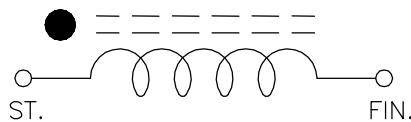


注:1.無鉛制程.

(UNIT : m/m)

SYMBOL	A	B	C	D	E		
DIMENSIONS	4.45±0.4	4.06±0.3	2.0±0.3	2.0MAX	1.0±0.3		
	G	H	I				
	1.75	2.50	1.50				

**2.ELECTRICAL SCHEMATICS**

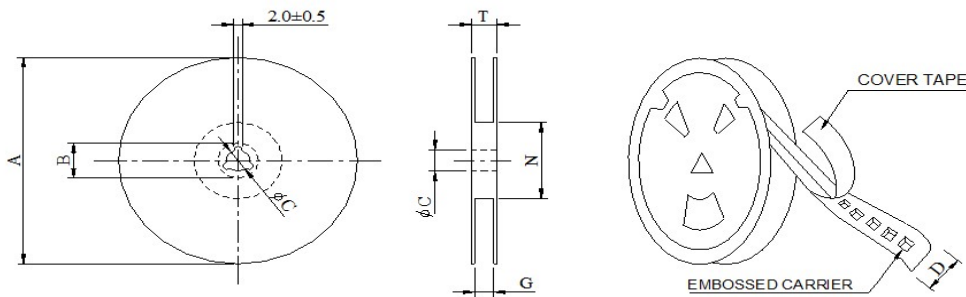


<b>CUSTOMER</b>		<b>PAGE</b>	2
<b>PART NO.</b>	SMPC0420HP-R47M	<b>REVISION</b>	
<b>DRAWN NO.</b>		<b>DATE</b>	2018-2-14
<b>DESCRIPTION</b>			

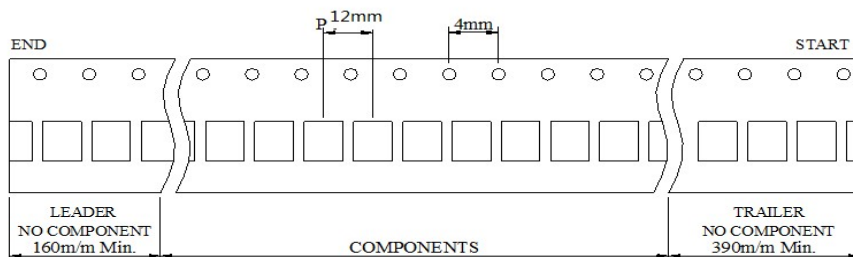
**3.ELECTRICAL SPECIFICATION & TEST INSTRUMENTS**

MEAS. ITEM	L	DCR	Isat	Irms		
UNIT	uH	mΩ	(L drop 25%) A	(Δ T=40° ) A		
SPEC.	0.47±20%	17MAX.	9.0	7.0		
TEST FREQ.	100KHz/1V	---	100KHz/1V	100KHz/1V		
TEST INSTRUMENTS	Zentech LCR 100 OR EQU	GKT 502BC OR EQU	Zentech LCR 100 & 1320 OR EQU			

**4. DIMENSIONS FOR CARRIER TAPES(mm)**



\*CARRIER TAPE WIDTH : D



USER DIRECTION OF FEED

STYLE	DIMENSIONS (m/m)							
	Q'TY (PCS)	A	B±0.8	C±0.5	D	G+0	N-0	T
13	3,000	330	21	13	16	16	100	19

