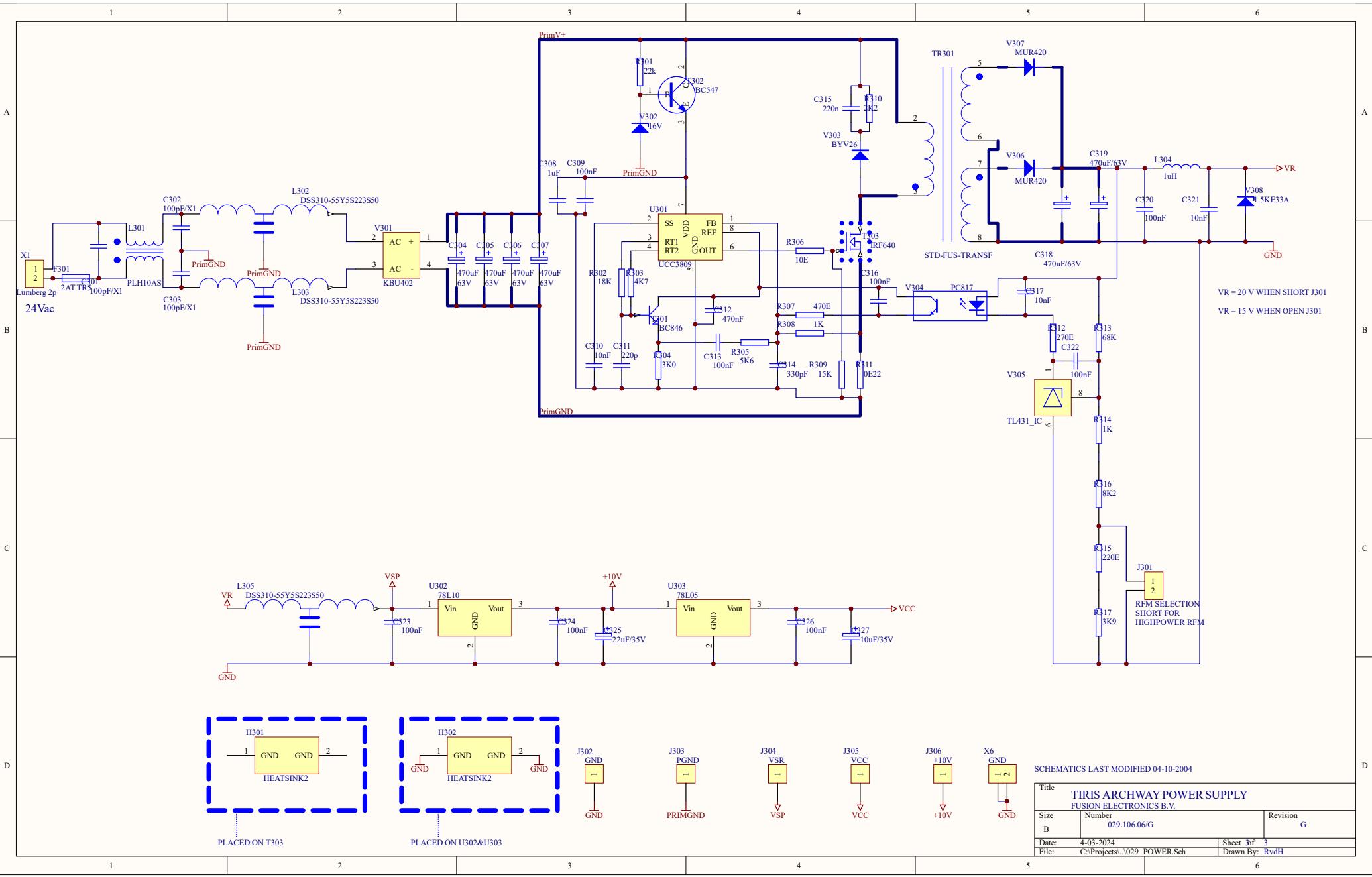


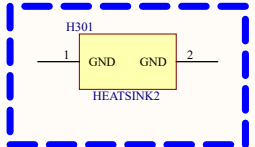
SCHEMATICS LAST MODIFIED 04-10-2004

Title		
TIRIS ARCHWAY INTERFACE		
FUSION ELECTRONICS B.V.		
Size	Number	Revision
B	029.106.06/G	G
Date:	4-03-2024	Sheet 2 of 3
File:	C:\Projects\...029_TAI.Sch	Drawn By: RvdH

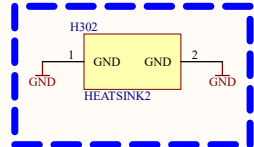


VR = 20 V WHEN SHORT J301
 VR = 15 V WHEN OPEN J301

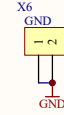
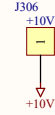
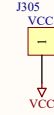
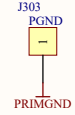
J301
 1 2
 RFM SELECTION
 SHORT FOR
 HIGHPOWER RFM



PLACED ON T303



PLACED ON U302&U303



SCHMATICS LAST MODIFIED 04-10-2004

Title TRIS ARCHWAY POWER SUPPLY FUSION ELECTRONICS B.V.		
Size B	Number 029.106.06/G	Revision G
Date: 4-03-2024	Sheet 3 of 3	Drawn By: RvdH
File: C:\Projects\...029 POWER.Sch		