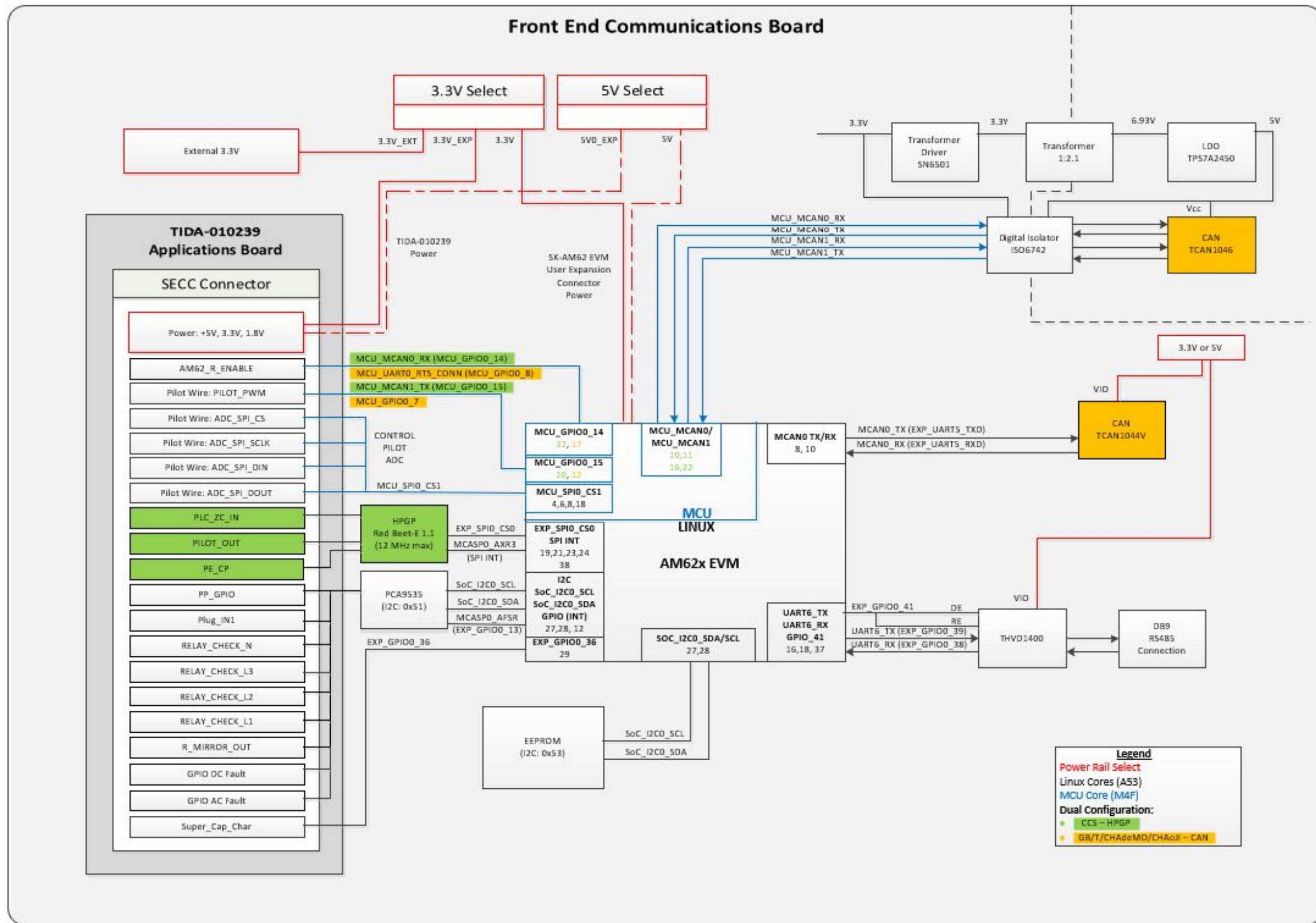


Revision History				
Rev	ECN #	Approved Date	Approved by	Notes
N/A	N/A	N/A	N/A	N/A



Legend

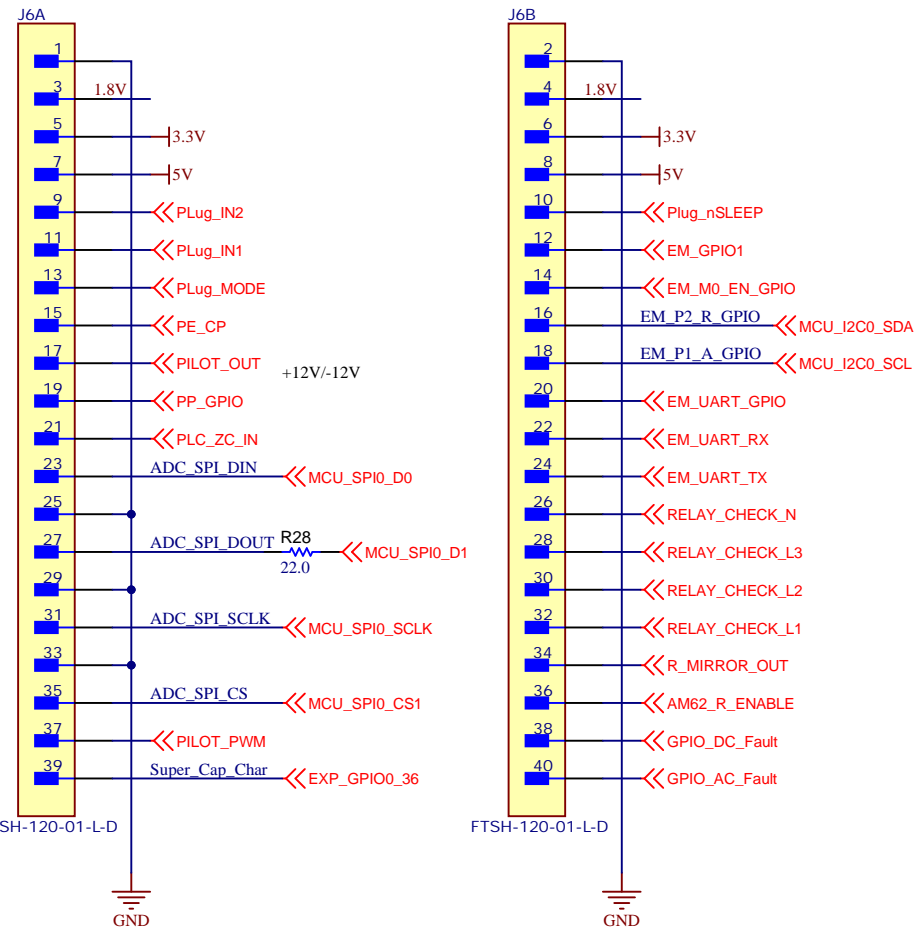
- Power Rail Select
- Linux Cores (A53)
- MCU Core (M4F)
- Dual Configuration:
 - CCS - HPGP
 - GB/T/CHAdE/MO/CHAOII - CAN

Texas Instruments and/or its licensors do not warrant the accuracy or completeness of this specification or any information contained therein. Texas Instruments and/or its licensors do not warrant that this design will meet the specifications, will be suitable for your application or fit for any particular purpose, or will operate in an implementation. Texas Instruments and/or its licensors do not warrant that the design is production worthy. You should completely validate and test your design implementation to confirm the system functionality for your application.

Orderable: ChangeMe in variant	Designed for: Public Release	Mod. Date: 5/3/2023
TID #: N/A	Project Title: Change in menu Project Project Options Parameter	
Number: 001	Rev: E1	Sheet Title:
SVN Rev: Not in version control	Assembly Variant: HPGP	Sheet: 1 of 3
Drawn By: Chris Sakurada	File: Grid_EV_Front_End_Comms_Rev4.SchDoc	Size: B
Engineer: Chris Sakurada	Contact: http://www.ti.com/support	

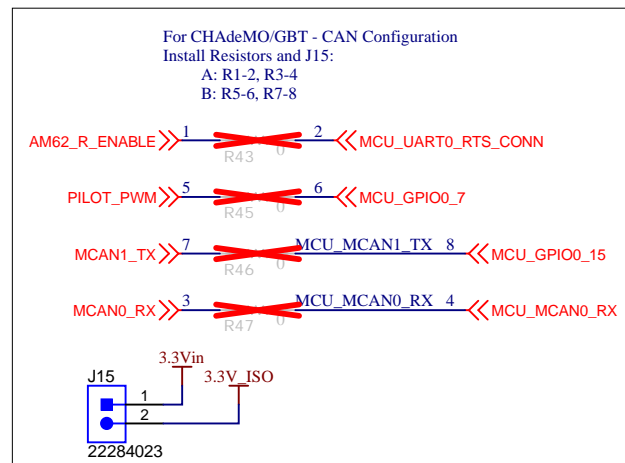
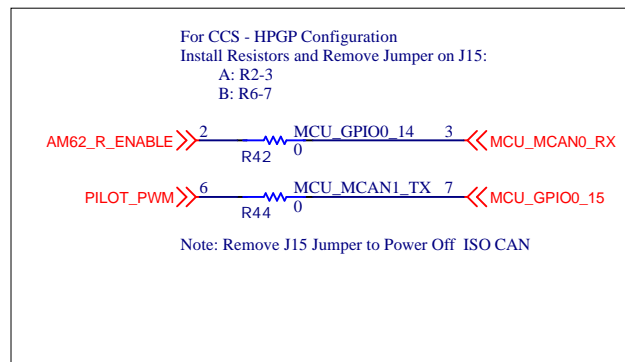


SECC Board Connector

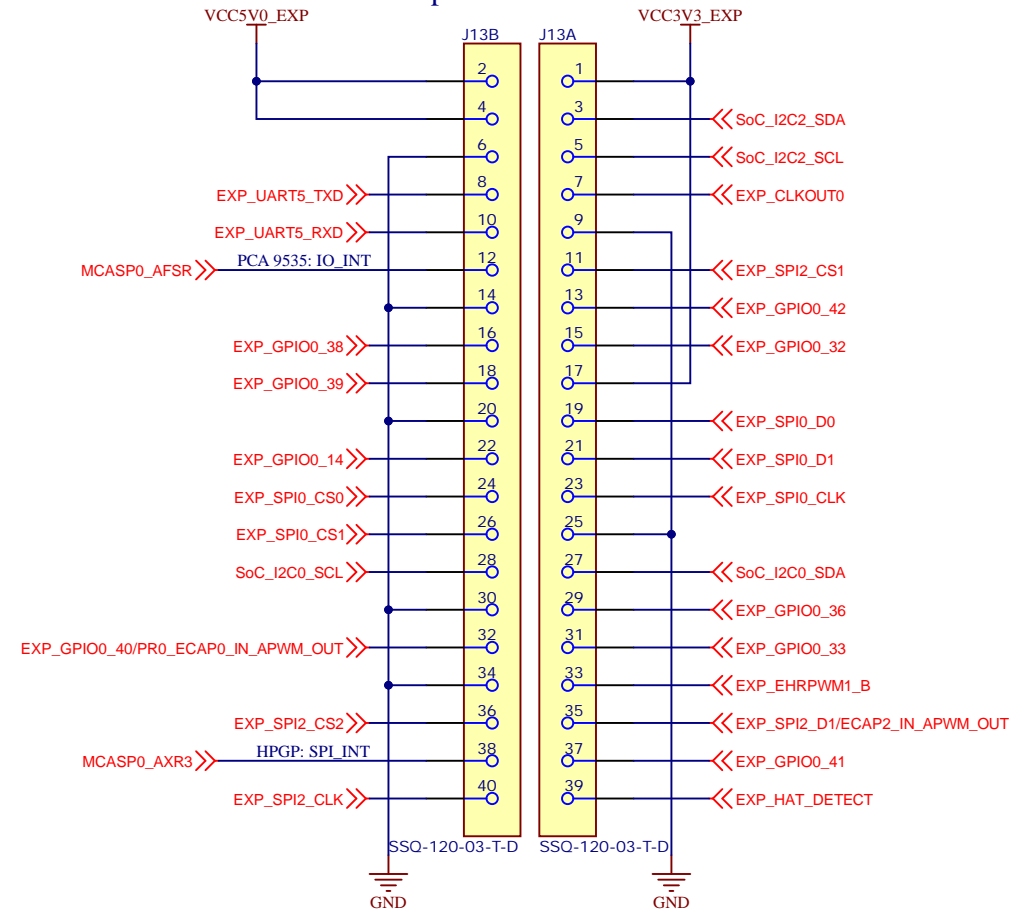


NOTE: PE_CP tied GND on baseboard, treat it as diff pair with PILOT_OUT on SECC board

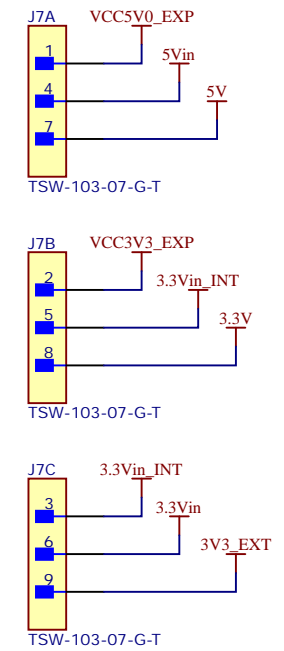
Variants:



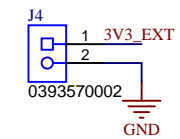
User Expansion Connector



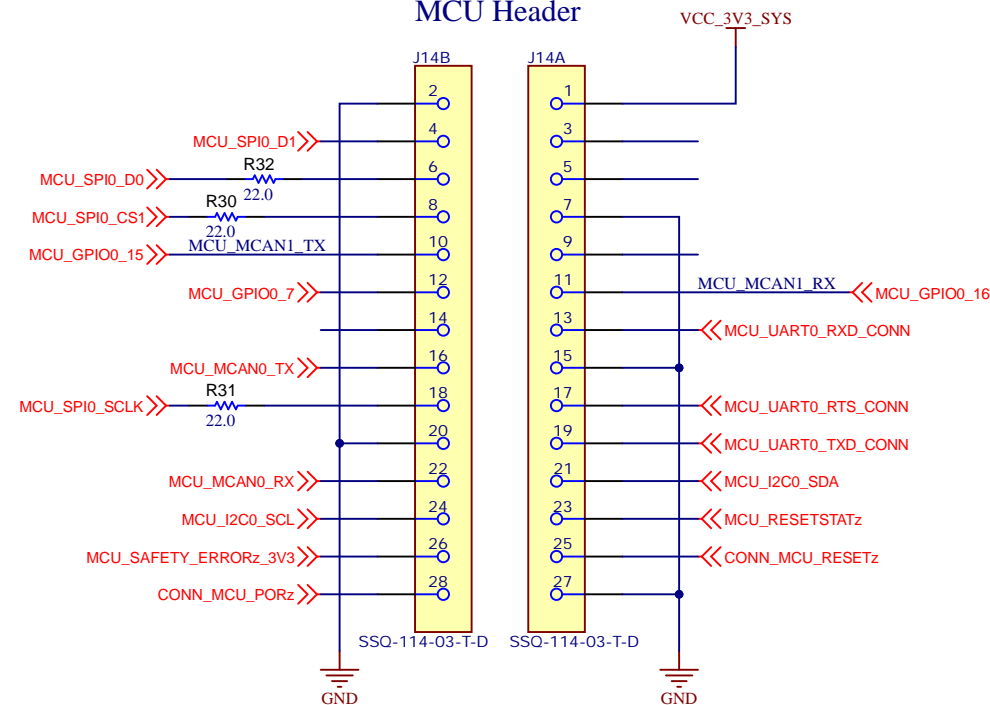
Power Select



External 3.3V Input



MCU Header

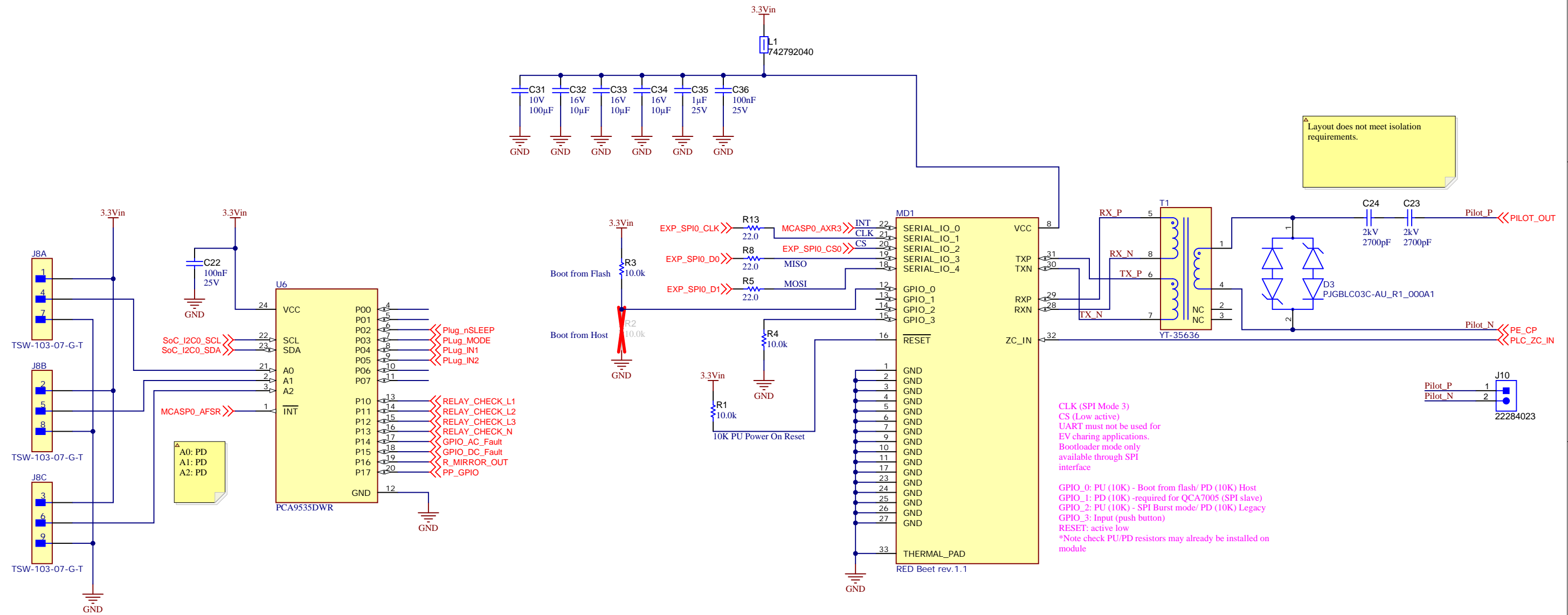


NOTE:

3V3 supply of MCU connector is 100mA max.

Orderable: ChangeMe in variant	Designed for: Public Release	Mod. Date: 5/9/2023
TID #: N/A	Project Title: Change in menu Project[Project Options]Parameter	
Number: 001	Rev: E1	Sheet Title:
SVN Rev: Not in version control	Assembly Variant: HPGP	Sheet: 2 of 10
Drawn By: Chris Sakurada	File: Grid_EV_Front_End_Comms_Connector_EEP_SchDoc	Rev: 4
Engineer: Chris Sakurada	Contact: http://www.ti.com/support	

HomePlugGreenPHY



CLK (SPI Mode 3)
 CS (Low active)
 UART must not be used for EV charging applications.
 Bootloader mode only available through SPI interface

 GPIO_0: PU (10K) - Boot from flash/ PD (10K) Host
 GPIO_1: PD (10K) -required for QCA7005 (SPI slave)
 GPIO_2: PU (10K) - SPI Burst mode/ PD (10K) Legacy
 GPIO_3: Input (push button)
 RESET: active low
 *Note check PU/PD resistors may already be installed on module

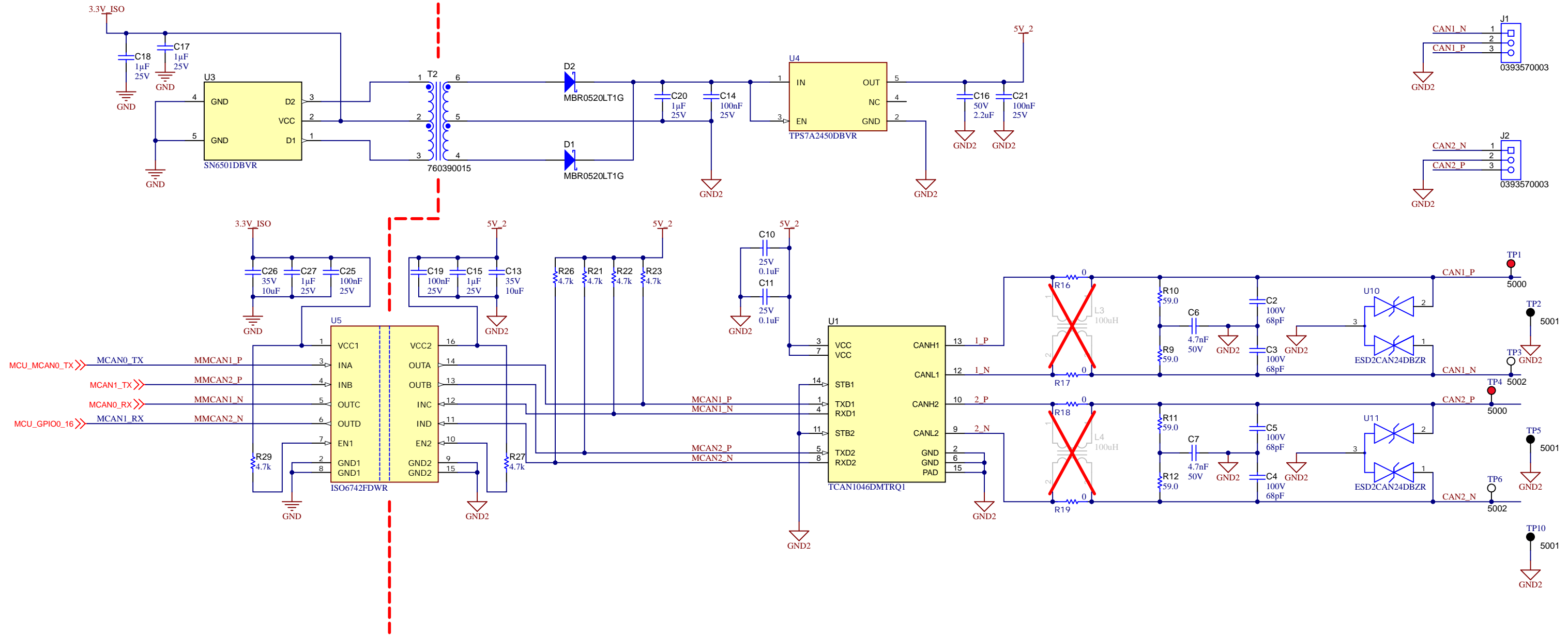
Texas Instruments and/or its licensors do not warrant the accuracy or completeness of this specification or any information contained therein. Texas Instruments and/or its licensors do not warrant that this design will meet the specifications, will be suitable for your application or fit for any particular purpose, or will operate in an implementation. Texas Instruments and/or its licensors do not warrant that the design is production worthy. You should completely validate and test your design implementation to confirm the system functionality for your application.

Orderable: ChangeMe in variant	Designed for: Public Release	Mod. Date: 5/9/2023
TID #: N/A	Project Title: Change in menu Project Project Options Parameter	
Number: 001	Rev: E1	Sheet Title:
SVN Rev: Not in version control	Assembly Variant: HPGP	Sheet: 4 of 10
Drawn By: Chris Sakurada	File: Grid_EV_Front_End_Comms_HPGP_Rev4.Sch	Size: B
Engineer: Chris Sakurada	Contact: http://www.ti.com/support	

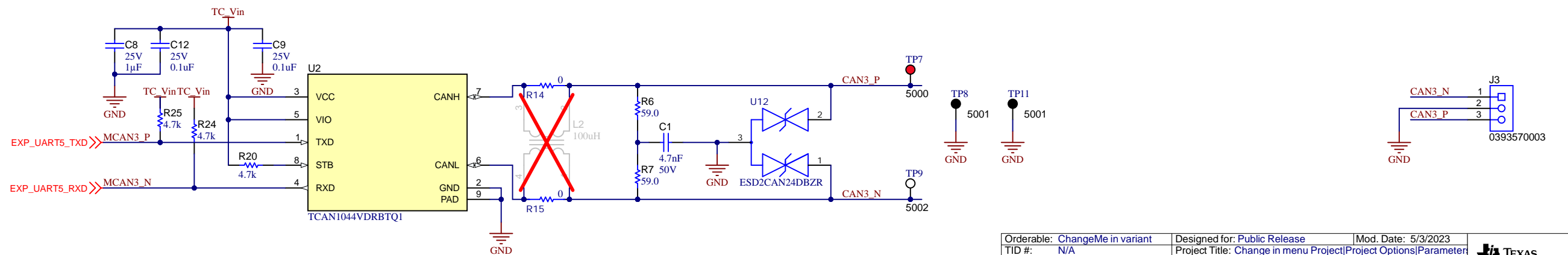


© Texas Instruments 2023

Isolated Dual CAN Interface



Single CAN Interface



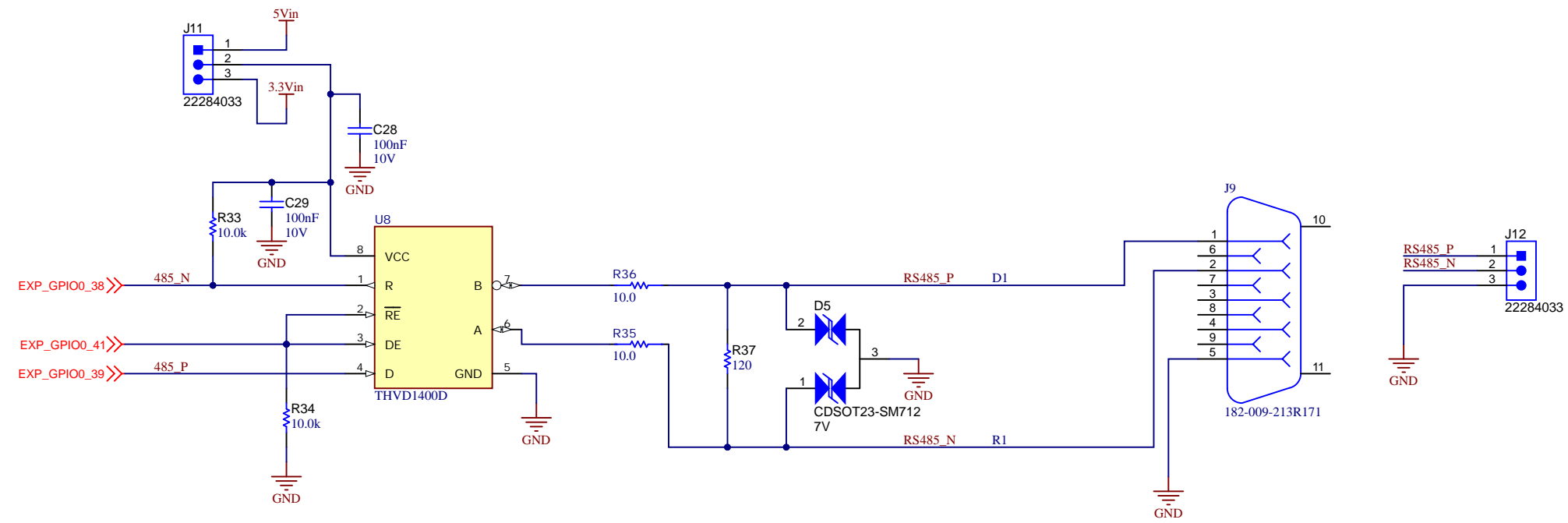
Texas Instruments and/or its licensors do not warrant the accuracy or completeness of this specification or any information contained therein. Texas Instruments and/or its licensors do not warrant that this design will meet the specifications, will be suitable for your application or fit for any particular purpose, or will operate in an implementation. Texas Instruments and/or its licensors do not warrant that the design is production worthy. You should completely validate and test your design implementation to confirm the system functionality for your application.

Orderable: ChangeMe in variant	Designed for: Public Release	Mod. Date: 5/3/2023
TID #: N/A	Project Title: Change in menu Project Project Options Parameter	
Number: 001	Rev: E1	Sheet Title:
SVN Rev: Not in version control	Assembly Variant: HPGP	Sheet: 5 of 10
Drawn By: Chris Sakurada	File: Grid_EV_Front_End_Comms_CAN_Rev4.SchDoc	Size: B
Engineer: Chris Sakurada	Contact: http://www.ti.com/support	

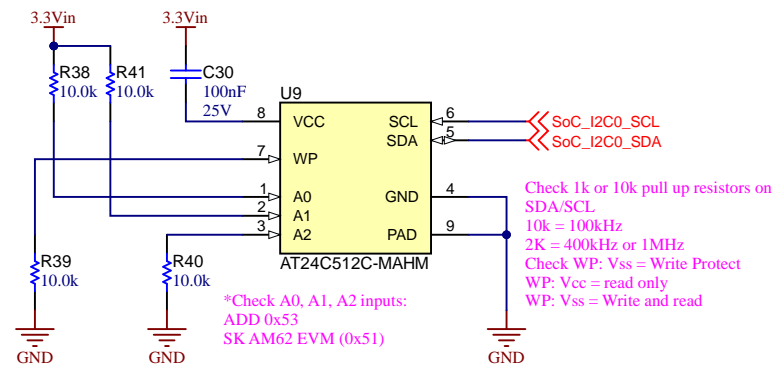


© Texas Instruments 2023

RS-485 Interface



EEPROM



Texas Instruments and/or its licensors do not warrant the accuracy or completeness of this specification or any information contained therein. Texas Instruments and/or its licensors do not warrant that this design will meet the specifications, will be suitable for your application or fit for any particular purpose, or will operate in an implementation. Texas Instruments and/or its licensors do not warrant that the design is production worthy. You should completely validate and test your design implementation to confirm the system functionality for your application.

Orderable: ChangeMe in variant	Designed for: Public Release	Mod. Date: 5/2/2023
TID #: N/A	Project Title: Change in menu Project Project Options Parameter	
Number: 001	Rev: E1	Sheet Title:
SVN Rev: Not in version control	Assembly Variant: HPGP	Sheet: 6 of 10
Drawn By: Chris Sakurada	File: Grid_EV_Front_End_Comms_RS232_RS485_RS485_SchDoc	Size: 5.5K
Engineer: Chris Sakurada	Contact: http://www.ti.com/support	



http://www.ti.com
© Texas Instruments 2023

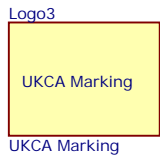


Logo2
PCB
LOGO
FCC disclaimer

Logo5
PCB
LOGO
WEEE logo

Logo1
PCB
LOGO
Texas Instruments

PCB Number: 001
PCB Rev: E1
Printed Circuit Board



LBL1
PCB Label
THT-14-423-10



Orderable: ChangeMe in variant	Designed for: Public Release	Mod. Date: 4/27/2023
TID #: N/A	Project Title: Change in menu Project Project Options Parameter	
Number: 001	Rev: E1	Sheet Title:
SVN Rev: Not in version control	Assembly Variant: HPGP	Sheet: 7 of 10
Drawn By: Chris Sakurada	File: Grid_EV_Front_End_Comms_Hardware_Rev4_SideB	Site: SIB
Engineer: Chris Sakurada	Contact: http://www.ti.com/support	

Texas Instruments and/or its licensors do not warrant the accuracy or completeness of this specification or any information contained therein. Texas Instruments and/or its licensors do not warrant that this design will meet the specifications, will be suitable for your application or fit for any particular purpose, or will operate in an implementation. Texas Instruments and/or its licensors do not warrant that the design is production worthy. You should completely validate and test your design implementation to confirm the system functionality for your application.

