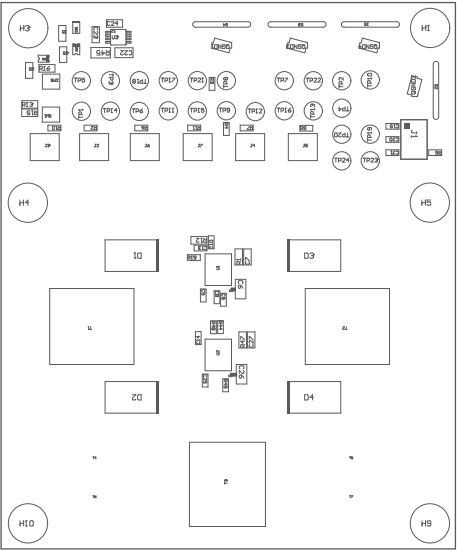
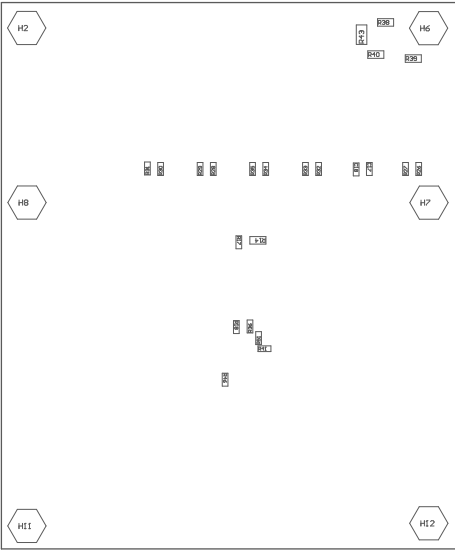


223 ■ These components are marked 'DNP' (Do Not Populate) and should not be populated. 222 ■ These components are marked 'ESD' (Electrostatic Discharge) and should be observed. 221 ■ Install label in silk-screened box after final wash. Text shall be 8 pt font. Text shall be per the Label Table in the PDF schematic.



COMPONENTS MARKED 'DNP' SHOULD NOT BE POPULATED.  
ASSEMBLY VARIANT: TPS1685EVM\_LP113

PCB VIEWED FROM TOP SIDE	BOARD #: LP113	REV: A	SUN REV: Not in version control
	TID #: N/A		
PLOT NAME = Top Assembly Drawing	GENERATED : 11/4/2024	10:35:47 PM	TEXAS INSTRUMENTS



COMPONENTS MARKED 'DNP' SHOULD NOT BE POPULATED.  
ASSEMBLY VARIANT: TPS1605EVM\_LP113

PCB VIEWED FROM BOTTOM SIDE	BOARD #: LP113	REV: A	SUN REV: Not in version control
	TID #: N/A		
PLOT NAME = Bottom Assembly Drawing	GENERATED : 11/4/2024 10:35:47 PM		TEXAS INSTRUMENTS