

Q1:

In CR Mode, it seems that 20V 3A has no problem starting and everything is normal.

But after Short, TPS25982 was unable to reply.

According to the measured waveform of Auto-retry, Vin: 20V, when Vout climbs to 14V, Iout is only about 1A.

In terms of power consumption  $(20V-14V) * 1A$  is about 6W, and the measured value is about 9w, but this The wattage is much lower than the power consumption measured at startup.

Currently encountering this problem, I don't understand why the startup fails?

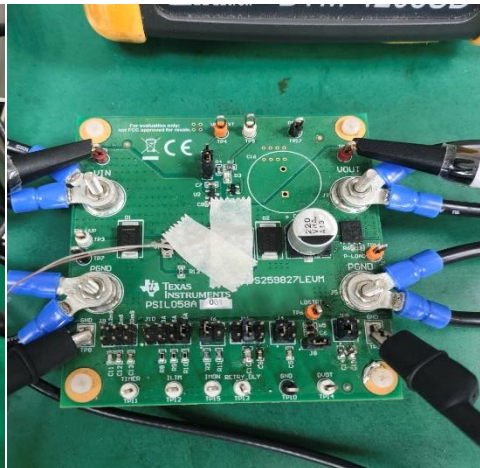
Several directions have been tried so far

1. The restart time becomes longer or shorter, but it is ineffective.
2. Set dvdt to open to achieve the fastest conversion efficiency, but it has no effect.

Is there any part that I accidentally overlooked? I need your help.

The test environment and pictures are as follows:

Vin 20V , CR Mode:6.6Ω(Iout:3A) ◦



Problem wave pattern after triggering protection:

