

# TPS54225 abnormal startup

Fig.1 VIN turn off and on with long interval  
(Start-up correctly)

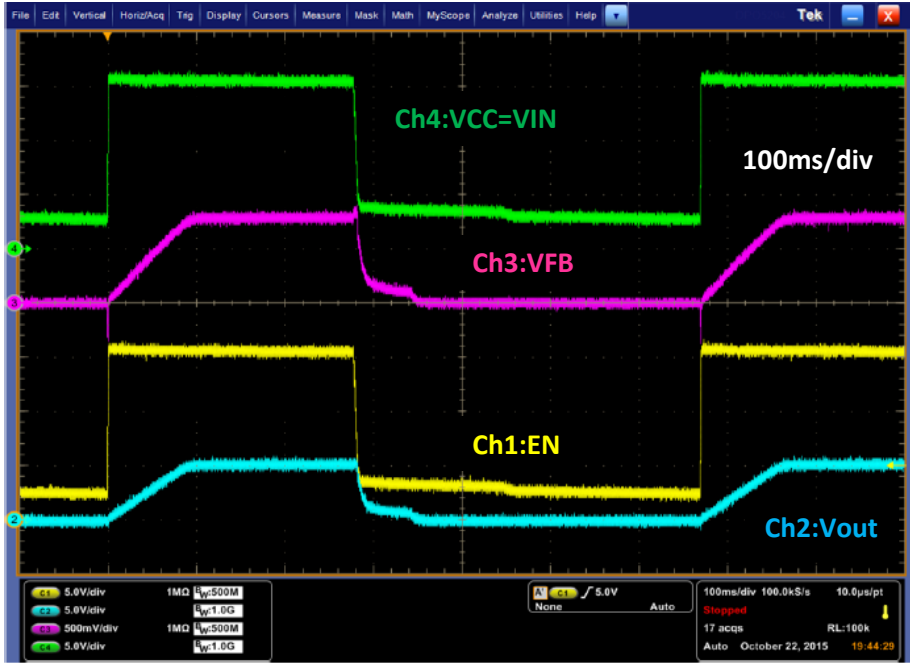
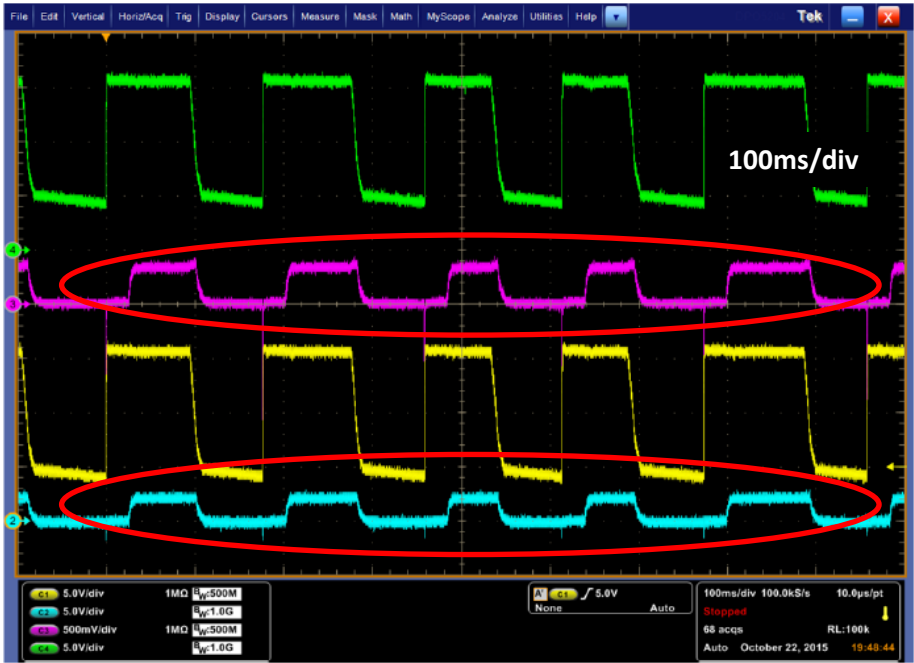
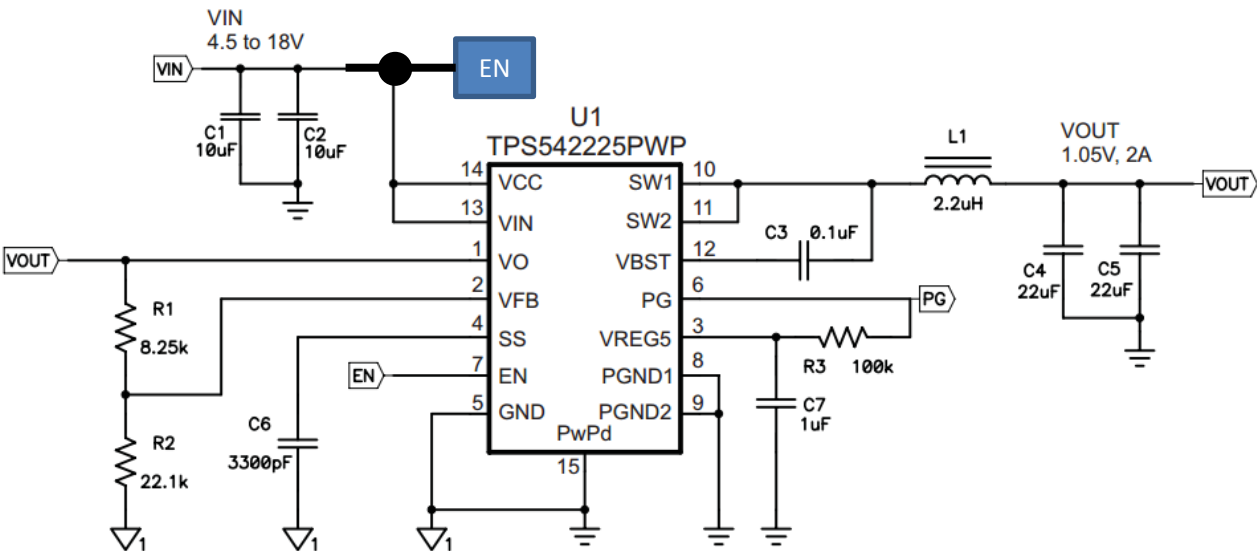


Fig.2 VIN turn off and on with short interval  
(Vout and Vfb are not reached correct voltage)



# TPS54225 abnormal startup

Current schematic



Abnormal startup was solved by adding 6V zener here

Add zener

