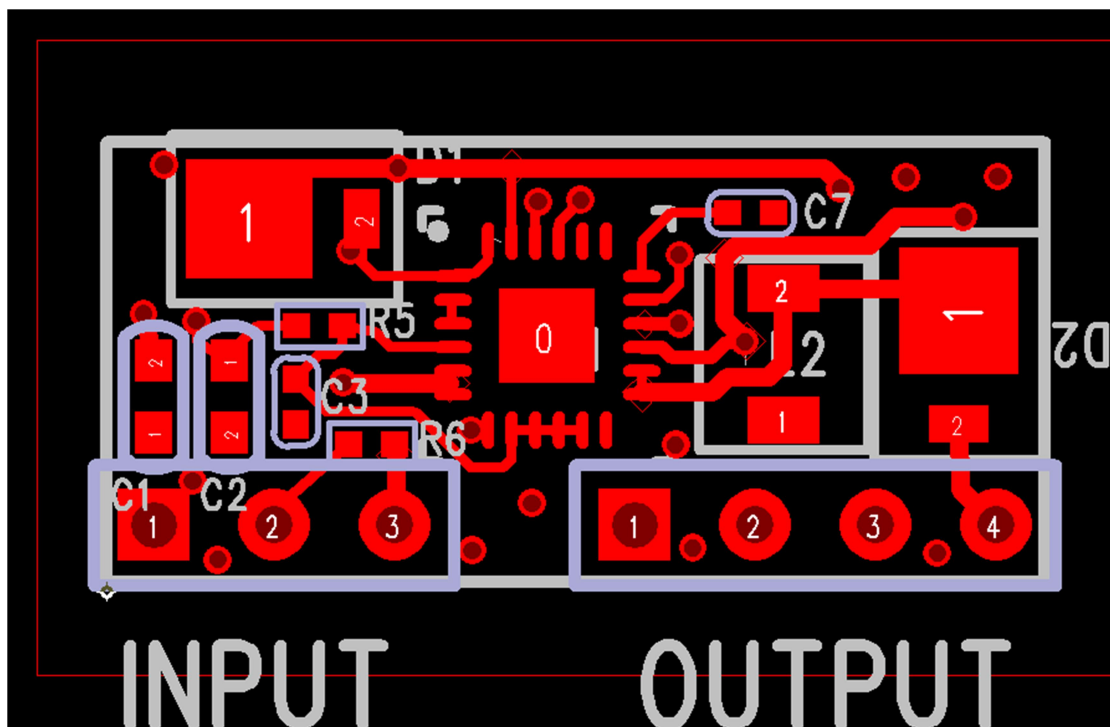
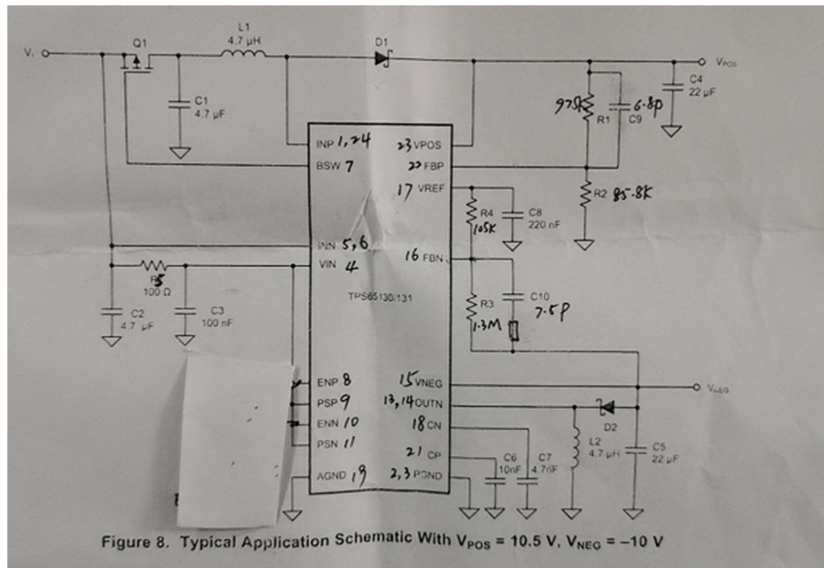
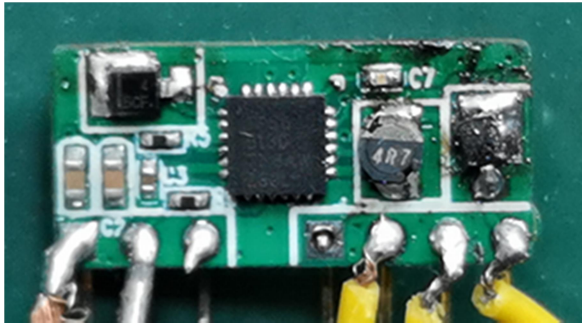
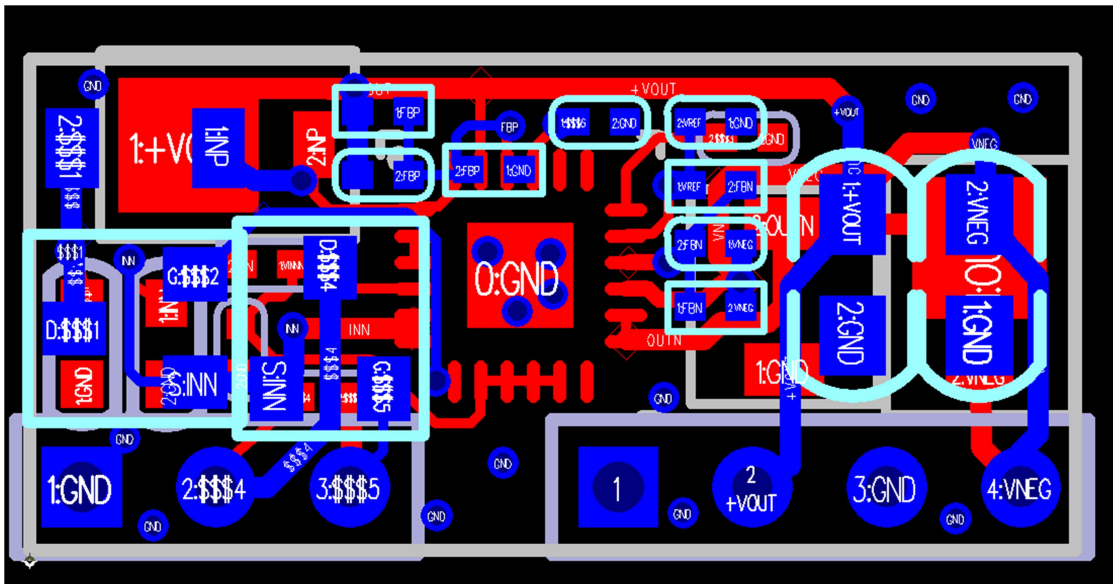
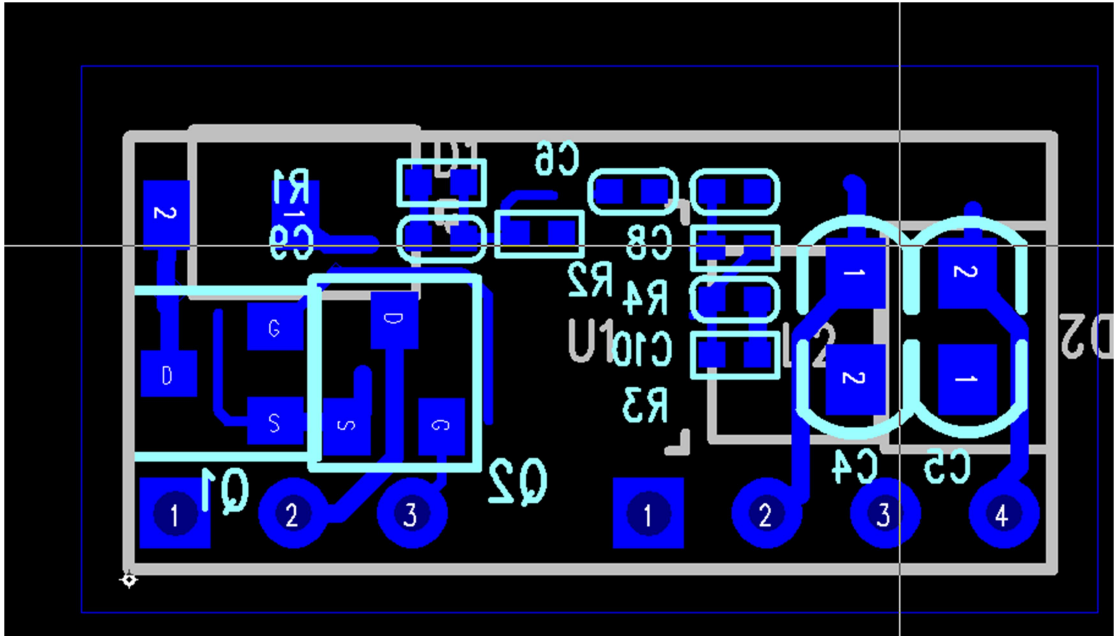
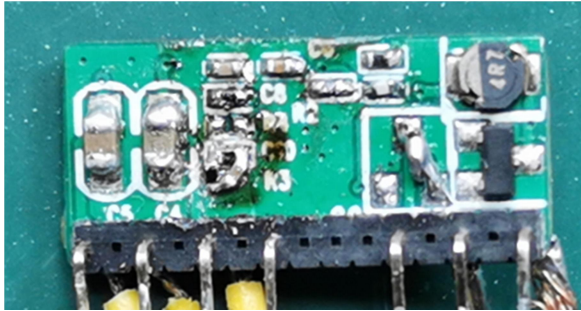


My project is a small power module, 5V input with a enable pin to open or close the module, and +/-15V output with 200mA capacity, in the 1st version, we add MOSFET Q2 ahead Q1 in series but we remove it when we debug. The 2nd version has no the Q2 and apply the pin: ENP and ENN as the below schematic. The Pcb size is 10mm X 20mm.

The 1st version design:







The 2nd version design:

