

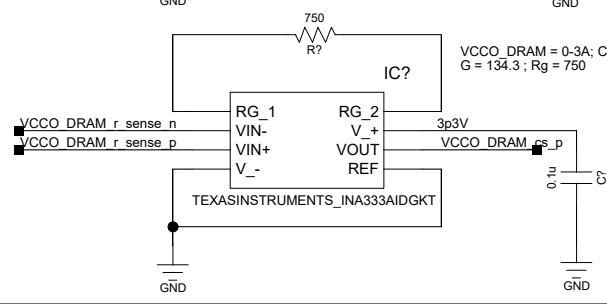
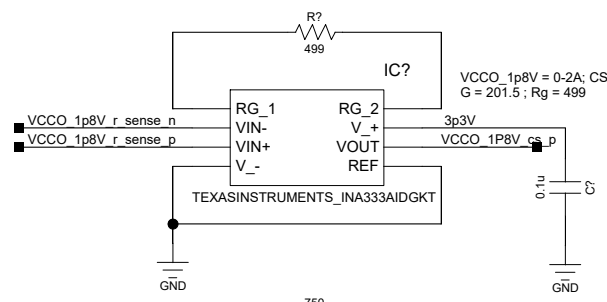
1.5V, 0.89A load

1.8V, 0.016A load

$R_{osc}(k\omega h) = 45580 * f_{sw}(kHz)^{-1.019}$   
 $f_{sw} = 513.8kHz$

VCCO\_1p8V = 0-2A; CS => 0V - 2.015V  
 $G = 201.5$ ;  $R_g = 499$

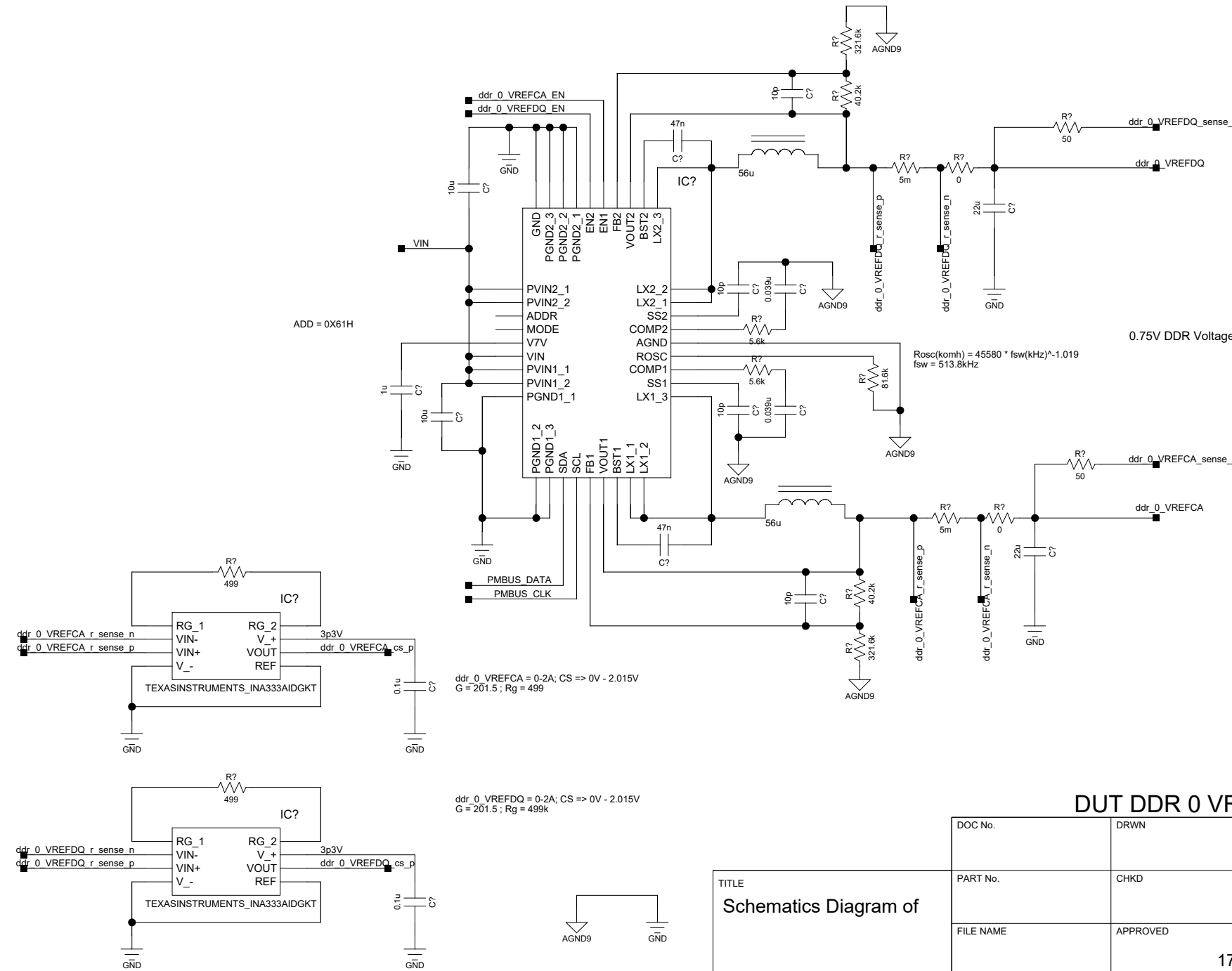
VCCO\_DRAM = 0-3A; CS => 0V - 2.015V  
 $G = 134.3$ ;  $R_g = 750$



### FPGA VCCO\_1p8V\_DRAM Power Supply

TITLE  
Schematics Diagram of

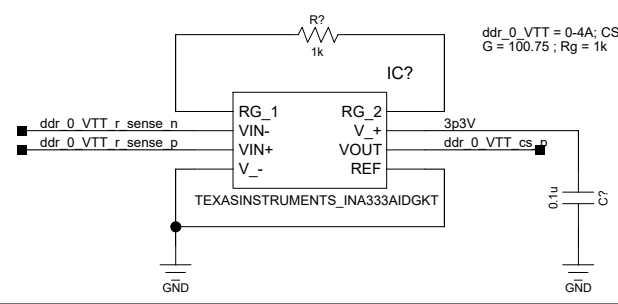
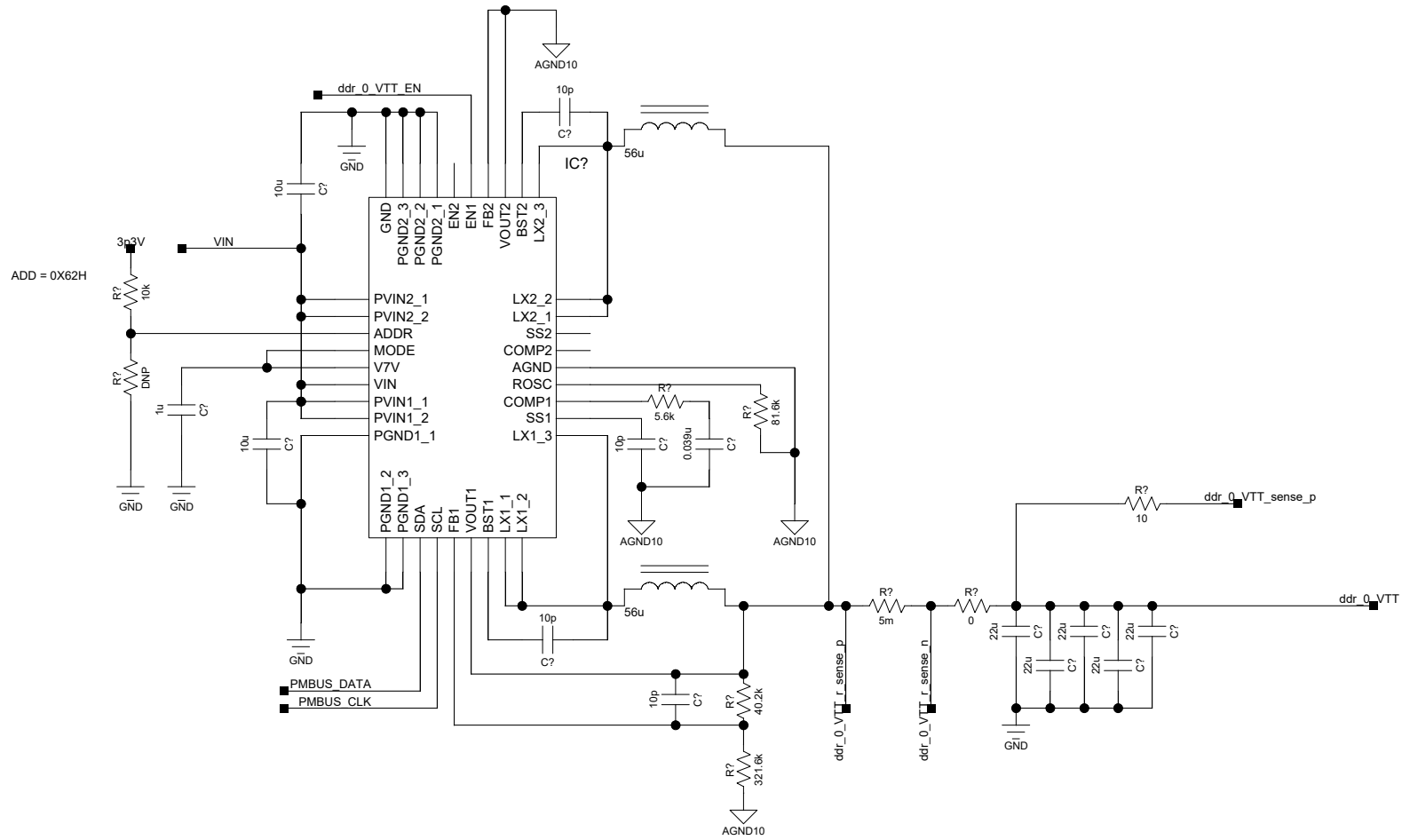
DOC No.	DRWN	DATE	REV
PART No.	CHKD	DATE	SIZE <b>A4</b>
FILE NAME	APPROVED	DATE	PAGE: <b>13 of 34</b>
17/05/2022:13:24			Intelligent Memory Ltd.



### DUT DDR 0 VREFCA / DQ Power Supply

TITLE  
Schematics Diagram of

DOC No.	DRWN	DATE	REV
PART No.	CHKD	DATE	A4
FILE NAME	APPROVED	DATE	PAGE: 18 of 34
		17/05/2022:13:26	Intelligent Memory Ltd.



$ddr\_0\_VTT = 0.4A; CS \Rightarrow 0V - 2.015V$   
 $G = 100.75; Rg = 1k$

### DUT DDR 0 VTT Power Supply

TITLE  
Schematics Diagram of

DOC No.	DRWN	DATE	REV
PART No.	CHKD	DATE	SIZE <b>A4</b>
FILE NAME	APPROVED	DATE 17/05/2022:13:27	PAGE: 19 of 34
			Intelligent Memory Ltd.