

## 6 Sequence Platform Settings

A power sequence is an automatic preprogrammed sequence handled by the TPS65916 device to configure the device resources: SMPSSs, LDOs, and REGEN functions (multiplexed with GPIO pins) into ON, OFF, or SLEEP state.

### 6.1 OFF2ACT Sequences

When an ON request occurs in the OFF state, the device is switched on and each resource is enabled based on the programmed OFF2ACT sequence.

Figure 7 shows the OFF2ACT sequence of the TPS659163RGZR.

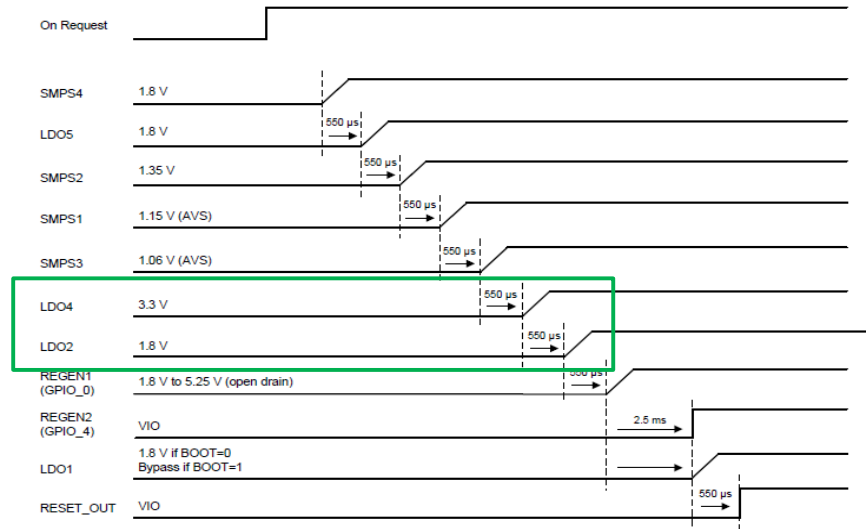
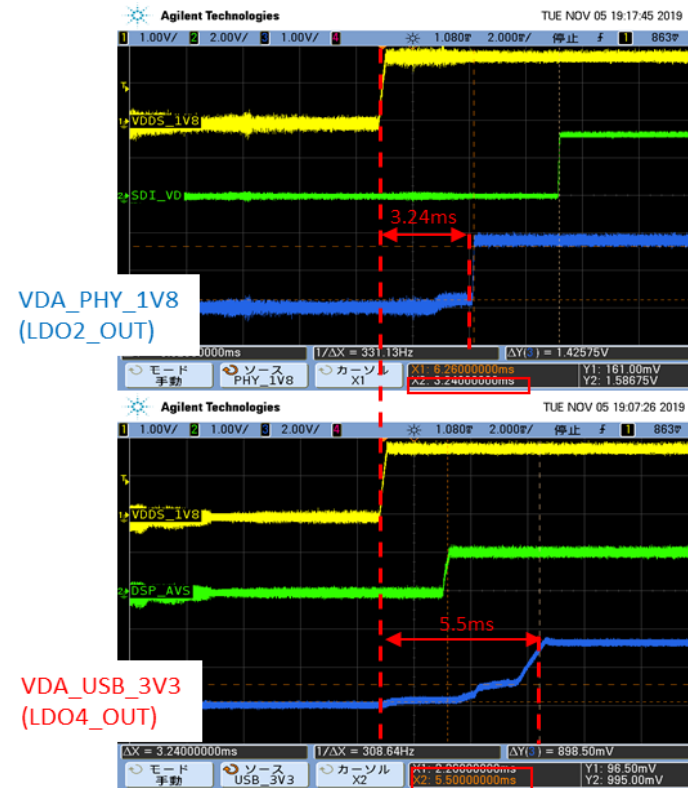


Figure 7. OFF2ACT Sequence of TPS659163RGZR



A delayed LDO4 output is observed on the custom board with TPS659163 + AM5706.