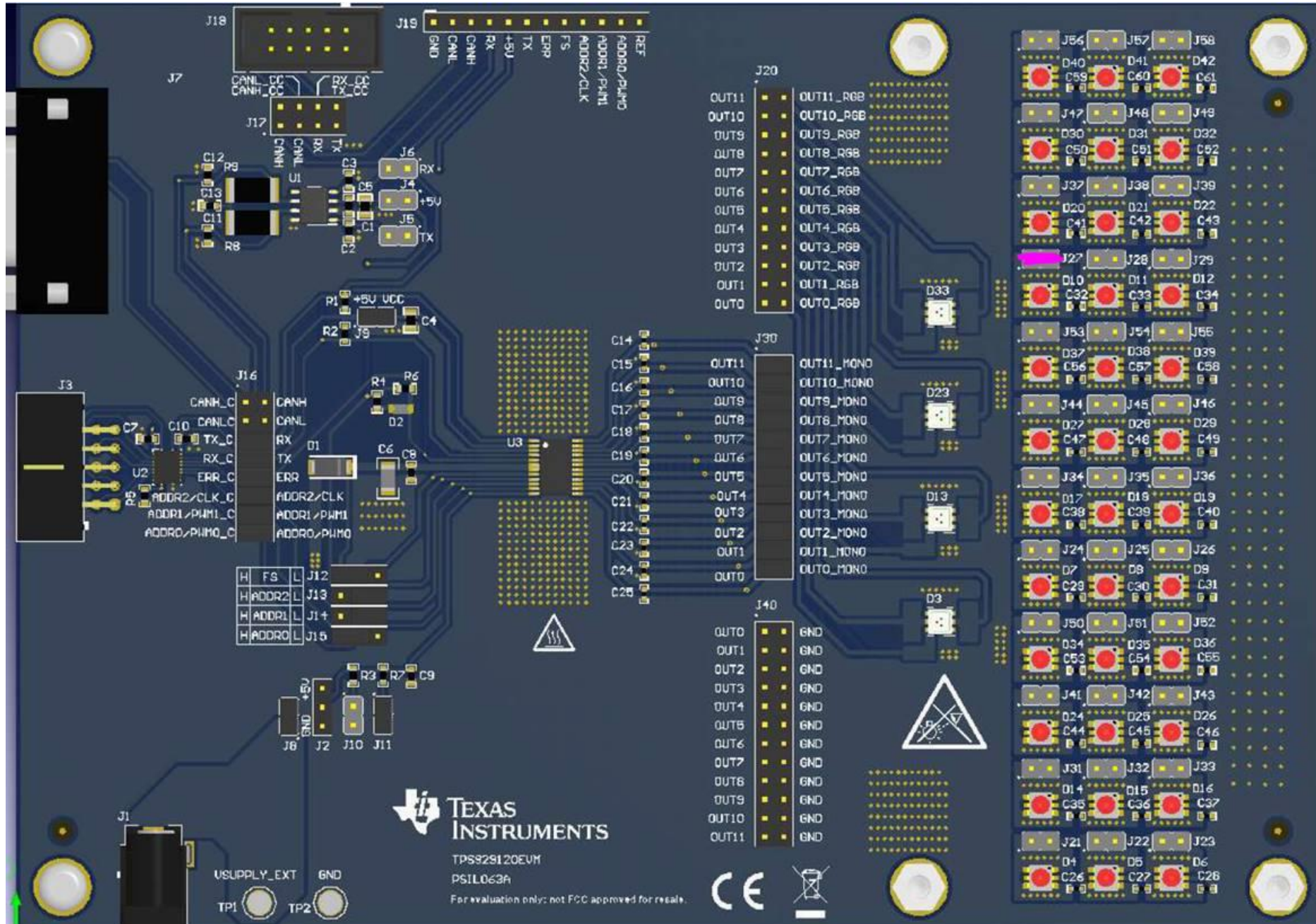




# Short J27



Configuration Miscellaneous / CONF_MISC0 / CONF_AUTOSS[7] ?	
<input checked="" type="checkbox"/>	CONF_AUTOSS
Configuration Miscellaneous / CONF_MISC3 / CONF_ODPW[3:0] ?	
CONF_ODPW	
	100µs ▼
Configuration Miscellaneous / CONF_MISC2 / CONF_ADCLOWSUPTH[3:0] ?	
CONF_ADCLOWSUPTH	
	8V ▼
EEPROM / EEPROM8 / EEPROM_ADCLOWSUPTH[3:0] ?	
EEP_ADCLOWSUPTH	
	8V ▼
Configuration Miscellaneous / CONF_MISC5 / CONF_ADCSHORTTH[7:0] ?	
CONF_ADCSHORTTH	<input type="text" value="4"/> ▼
EEPROM / EEPROM11 / EEPROM_ADCSHORTTH[7:0] ?	
EEP_ADCSHORTTH	<input type="text" value="d"/> ▼

(Cannot set, will change back to 0)

FLAG\_4

FLAG\_5

FLAG\_0

<input checked="" type="checkbox"/>	Output voltage channel 6	5.53450V	4s ago
<input checked="" type="checkbox"/>	Output voltage channel 7	5.53450V	2s ago
<input checked="" type="checkbox"/>	Output voltage channel 8	3.68530V	0s ago
<input checked="" type="checkbox"/>	Output voltage channel 9	5.53450V	30s ago
<input checked="" type="checkbox"/>	Output voltage channel 10	5.53450V	28s ago
<input checked="" type="checkbox"/>	Output voltage channel 11	5.53450V	26s ago

Auto single-LED  
short circuit \*

3.68

4

$$V_{(OUTx)} < V_{(ADCSHORTTH)}$$

and

$$V_{(SUPPLY)} > V_{(ADCLOWSUPTH)}$$

12

9

PWM pulse width greater than

$$T_{(ODPW)} + 6 * T_{(CONV)}$$

$$CONF\_ENCHx = 1$$

$$CONF\_DIAGENCHx = 1$$

$$CONF\_AUTOSS = 1$$