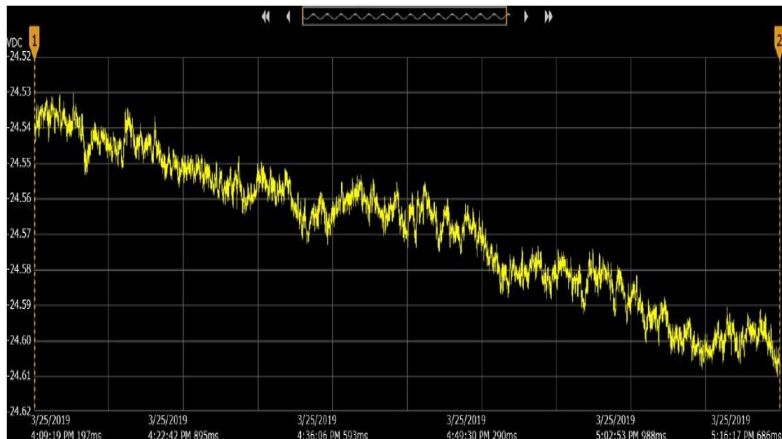


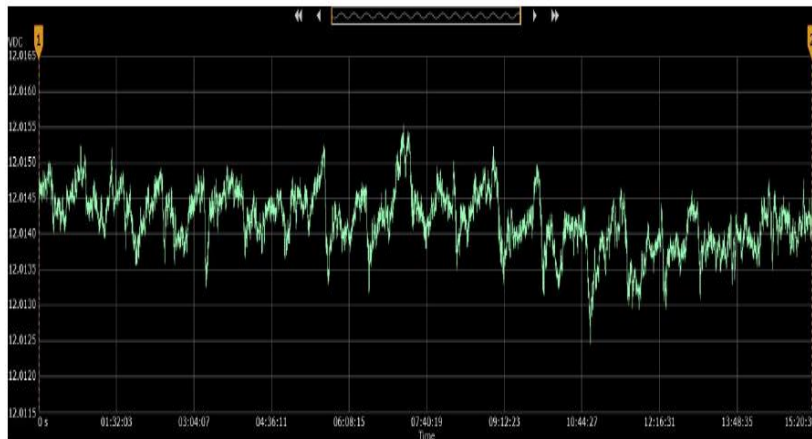
# UA723 Vref drift over time (up to 24 hours)

## Customer's test data on unit labelled as "bad"



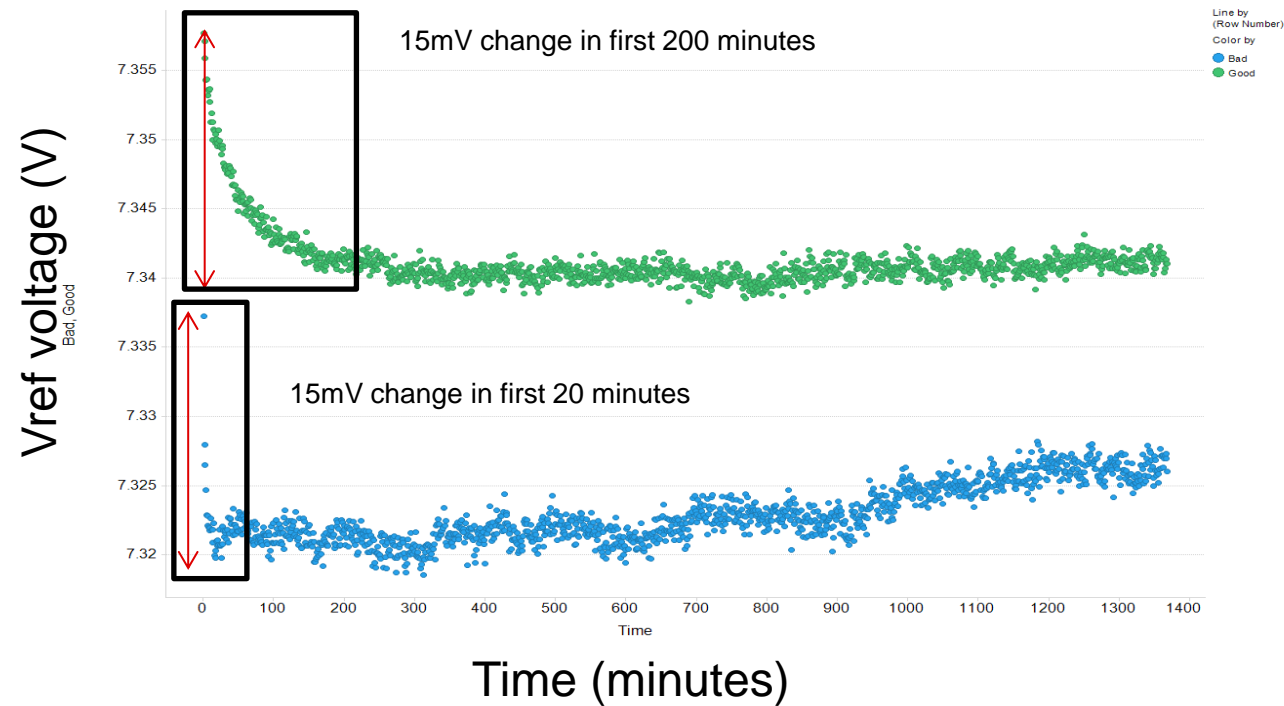
**1<sup>st</sup> hour** voltage change is around 70mV

## Customer's test data on unit labelled as "good"



**24 hours** voltage change V<sub>pp</sub> is 3mV

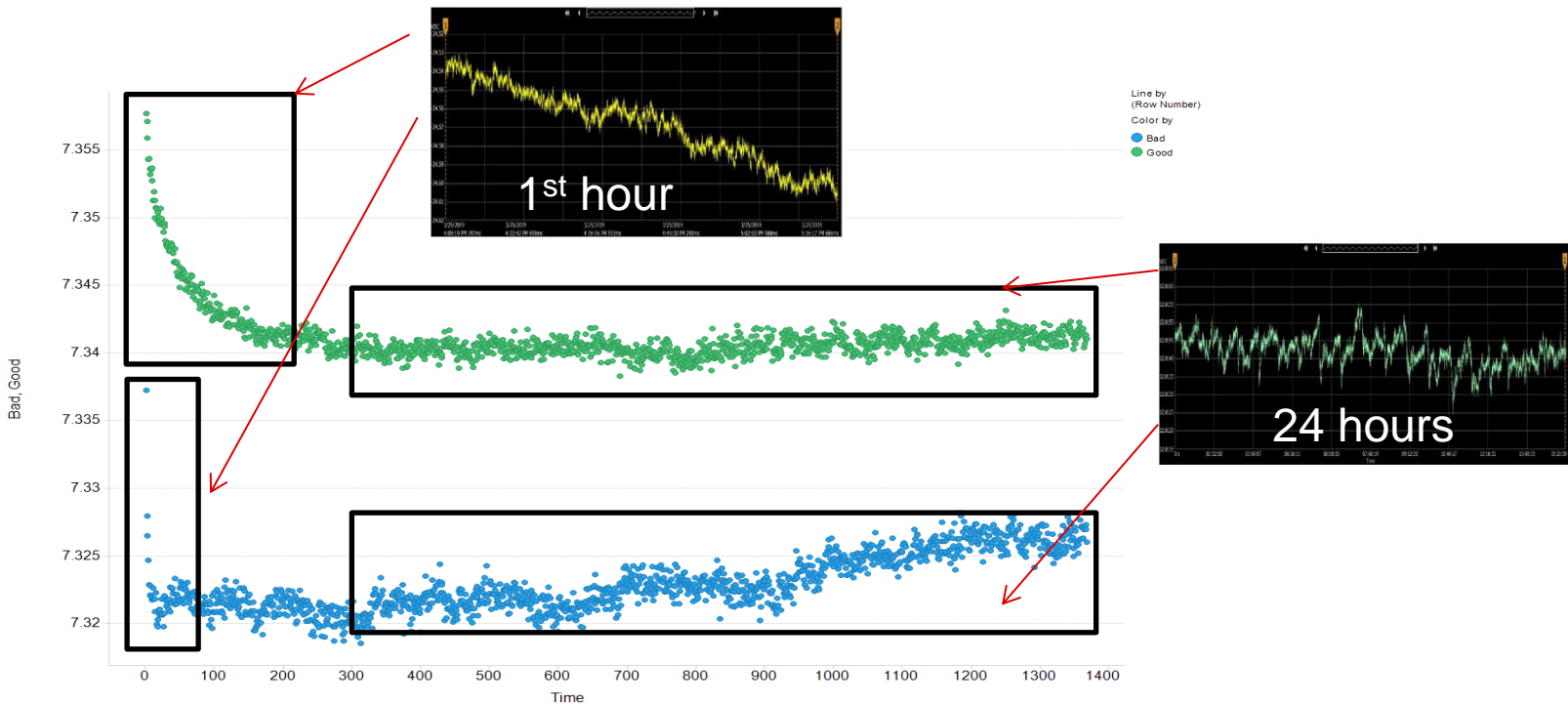
# Returned UA723 units Vref change over time



Vref data has been collected for 24 hours with 1 minute interval. Both devices shows ~15mV drop and then started to settle.

The **Blue** one shows slightly higher drift.

Both devices show two regions with different Vref change behaviors.



Based on the data we have, the Vref drifting signatures from both devices seem to have similar drifting behaviors.