

Partlist

Exported from V2 no 49\_9.brd at 18/04/2017 3:52 PM

EAGLE Version 8.0.2 Copyright (c) 1988-2017 Autodesk, Inc.

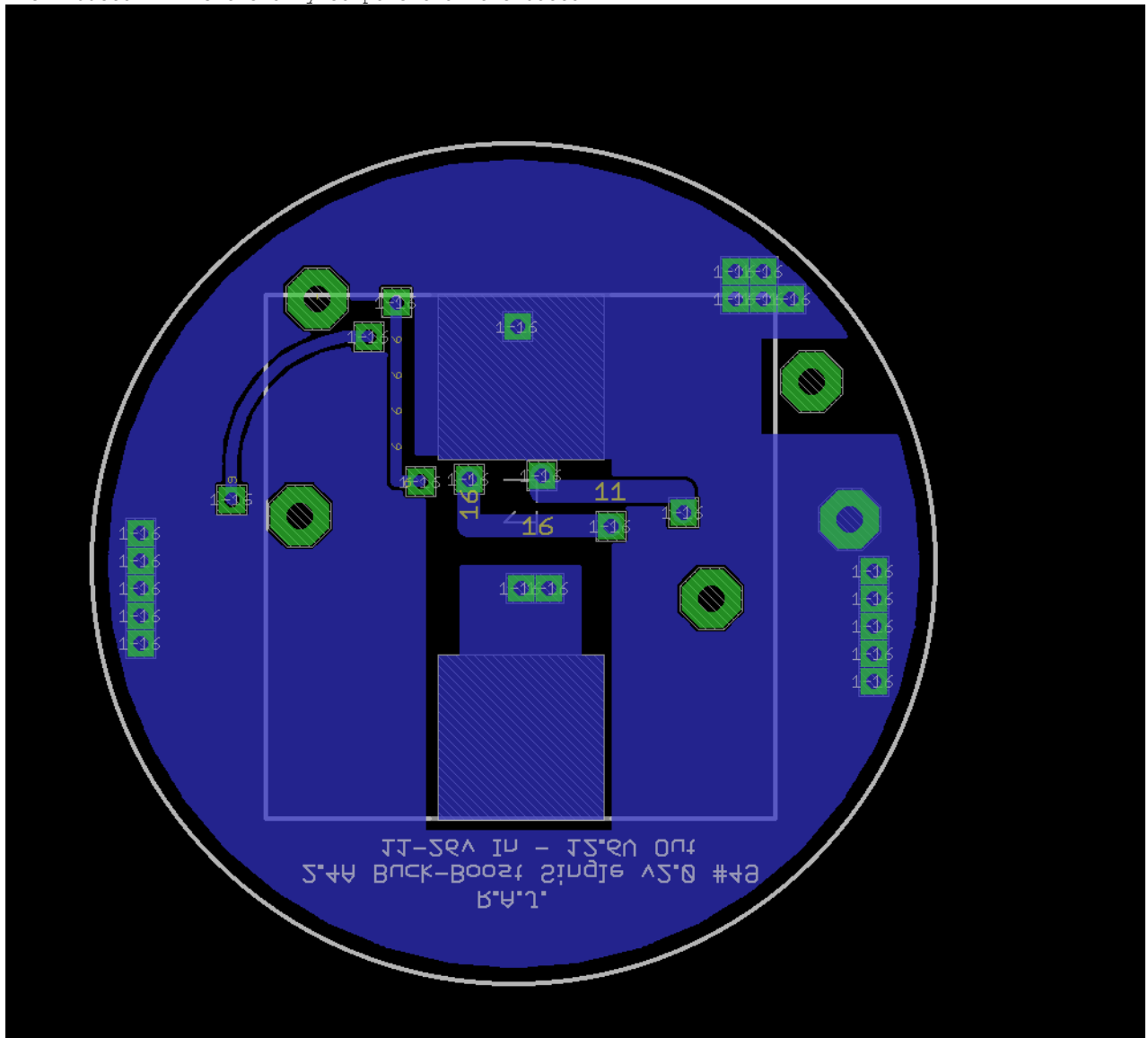
Assembly variant:

| Part    | Value         | Package       | Library                | Position (mil) | Orientation |
|---------|---------------|---------------|------------------------|----------------|-------------|
| CBYP    | 2.2uF         | 0805          | AcceleratedDesigns_Lib | (780 555)      | R270        |
| CCOMP   | 150nF         | 0805          | AcceleratedDesigns_Lib | (235 890)      | R270        |
| CEXT    | 100nF         | 0805          | AcceleratedDesigns_Lib | (185 370)      | R180        |
| CHSPN   | 100nF         | 0805          | AcceleratedDesigns_Lib | (980 660)      | R90         |
| CIN     | 68uF          | SM_RADIAL_8MM | AcceleratedDesigns_Lib | (785 310)      | R90         |
| CINX    | 100nF         | 0805          | AcceleratedDesigns_Lib | (950 915)      | R270        |
| CIN_2   | 68uF          | SM_RADIAL_8MM | AcceleratedDesigns_Lib | (430 310)      | R90         |
| COUT    | 10uF          | 1206_180      | AcceleratedDesigns_Lib | (160 445)      | R180        |
| COUT_3  | 10uF          | 1206_180      | AcceleratedDesigns_Lib | (160 530)      | R180        |
| COUT_X3 | 10uF          | 1206_180      | AcceleratedDesigns_Lib | (160 615)      | R180        |
| COVP    | 47pF          | 0805          | AcceleratedDesigns_Lib | (465 895)      | R270        |
| CT      | 1nF           | 0805          | AcceleratedDesigns_Lib | (430 765)      | R180        |
| D1      | PMEG3050BEP   | SOD128        | nxp_60                 | (375 560)      | R0          |
| L+      | +out          | 2,15/1,0      | wirepad                | (290 670)      | R270        |
| L-      | -out          | 2,15/1,0      | wirepad                | (885 550)      | R90         |
| L1      | 10uH          | WE-HCB-18X8.9 | V2 no 49_1             | (610 610)      | MR270       |
| M1      | 80V           | PG-TDSON-8    | BSC                    | (610 610)      | R270        |
| P1      |               | 2,15/1,0      | wirepad                | (315 985)      | R0          |
| Q1      | N/A           | SOT-23        | V2_01                  | (155 735)      | R0          |
| RCHS    | 12.4k         | 1206          | AcceleratedDesigns_Lib | (315 890)      | R270        |
| RCS     | 18m           | 1206_180      | AcceleratedDesigns_Lib | (665 820)      | R90         |
| RDIM    | 11.8k         | 0805          | AcceleratedDesigns_Lib | (675 980)      | R90         |
| RHSN    | 1k            | 0805          | AcceleratedDesigns_Lib | (970 760)      | R180        |
| RHSP    | 1k            | 0805          | AcceleratedDesigns_Lib | (910 660)      | R90         |
| RIVP1   | 1.47k         | 0805          | AcceleratedDesigns_Lib | (535 895)      | R270        |
| RIVP2   | 10k           | 0805          | AcceleratedDesigns_Lib | (605 980)      | R90         |
| ROVP1   | 34.8k         | 0805          | AcceleratedDesigns_Lib | (390 895)      | R270        |
| ROVP2   | 511k          | 0805          | AcceleratedDesigns_Lib | (280 760)      | R180        |
| RR      | 10            | 0805          | AcceleratedDesigns_Lib | (1085 760)     | R0          |
| RSENSE  | 39m           | 1210          | AcceleratedDesigns_Lib | (1025 550)     | R0          |
| RT      | 88.7k         | 0805          | AcceleratedDesigns_Lib | (465 670)      | R90         |
| U1      | LM3429MH/NOPB | MXA14A        | LM3429-1               | (810 870)      | R270        |
| V+      | +in           | 2,15/1,0      | wirepad                | (1085 665)     | R270        |
| V-      | -in           | 2,15/1,0      | wirepad                | (1030 865)     | R270        |



Bottom Board

The inductor L1 is the only component on the bottom



This image is both top and bottom layers

