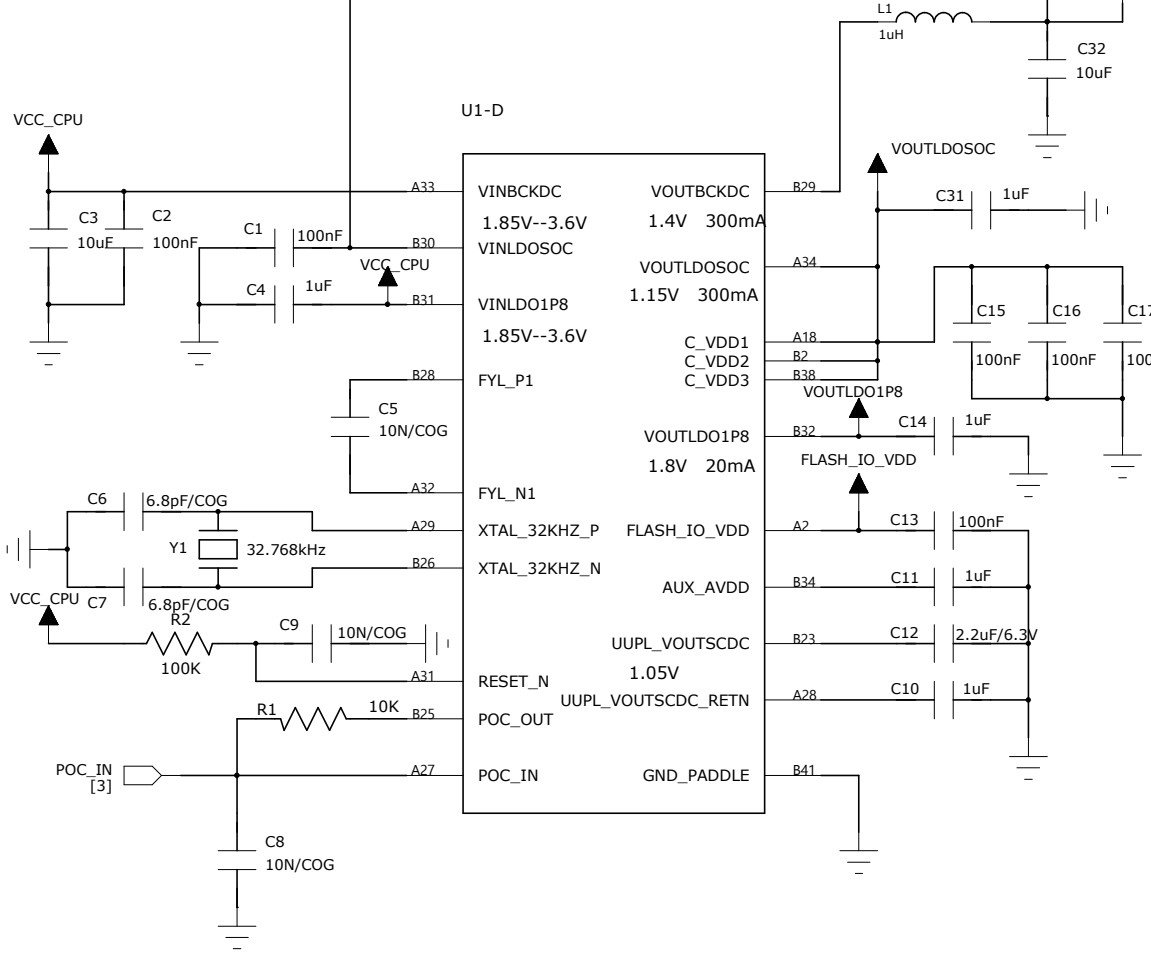
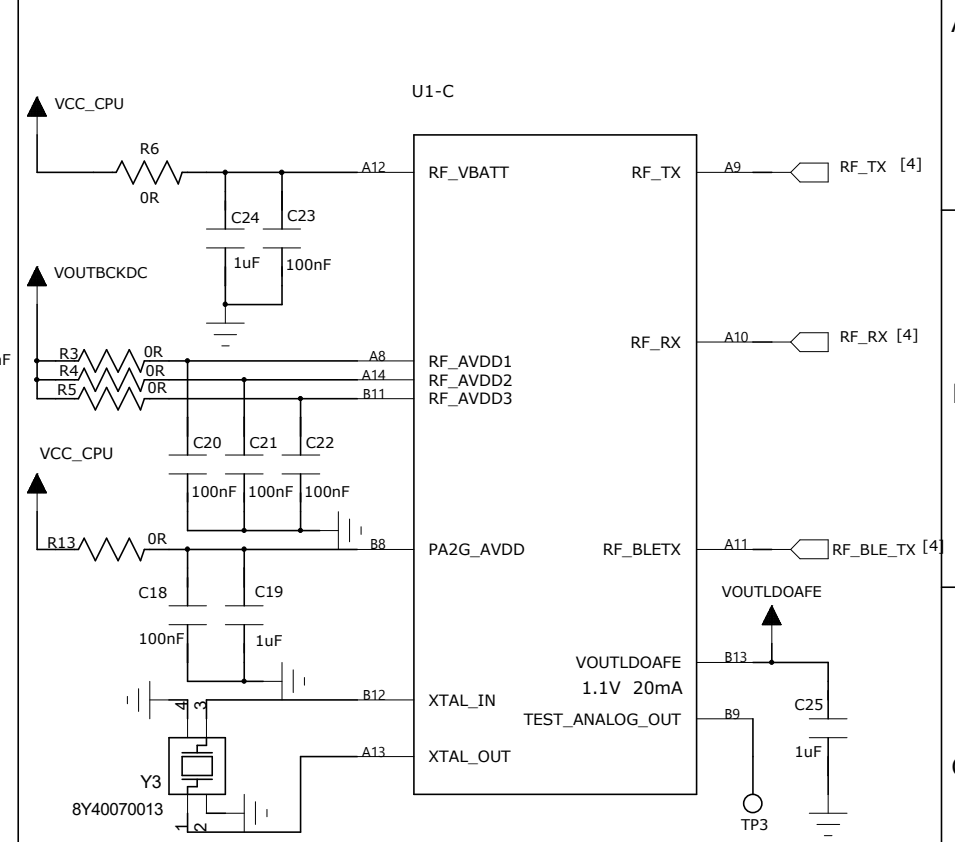


# CPU\_POWER1



# CPU\_POWER2



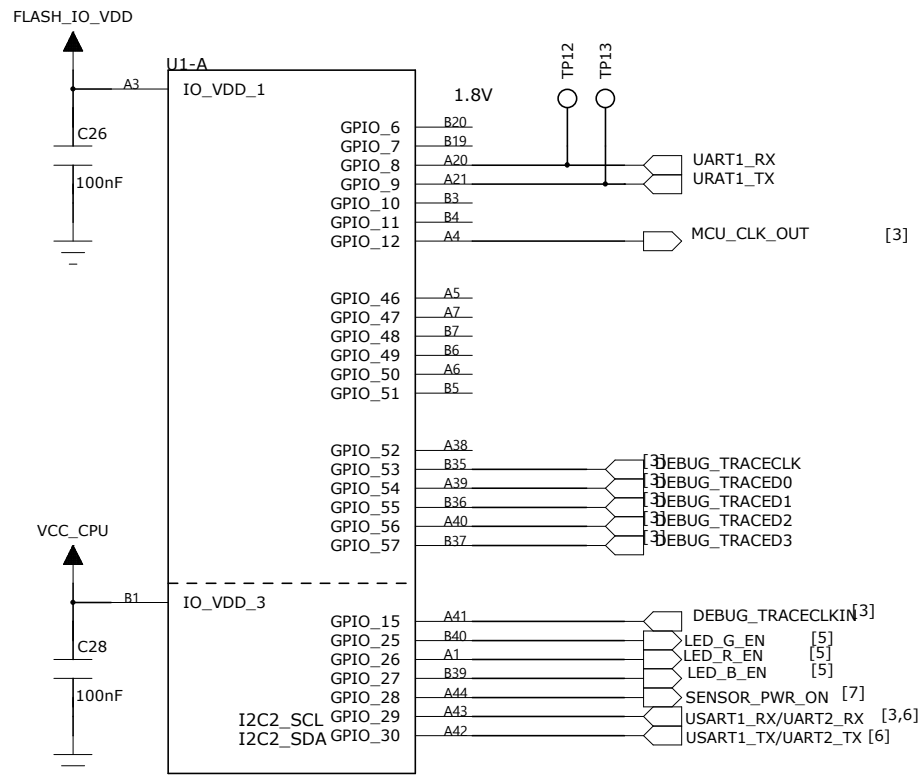
MARK1 1  
 MARK2 1  
 FIDU\_1.0\_2.4 FIDU\_1.0\_2.4

POC\_IN resets all the internal blocks (Analog and Digital) of the IC.

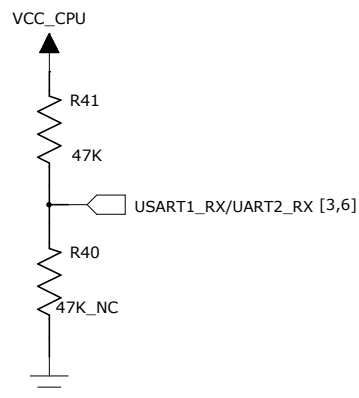
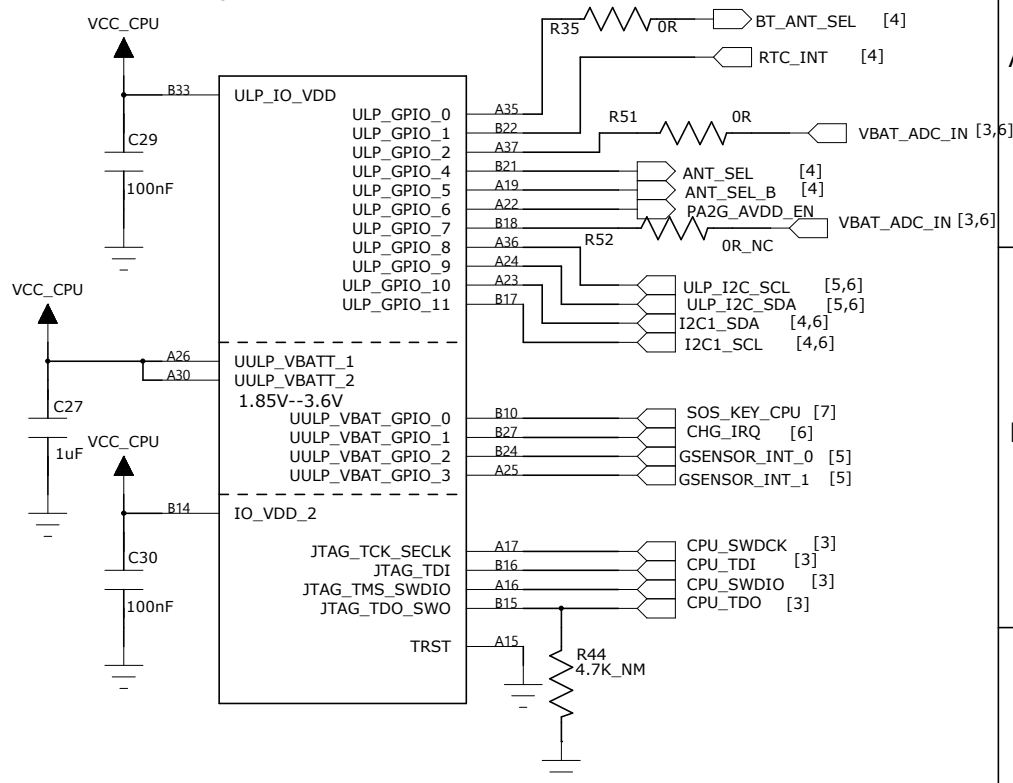
RESET\_N resets the internal Digital blocks of the IC.

Title			Cling_xxxx_xx_xx_V1.0		
Size	Number		Revision		
A4					
Date:	Sheet of		Drawn By:		
File:					

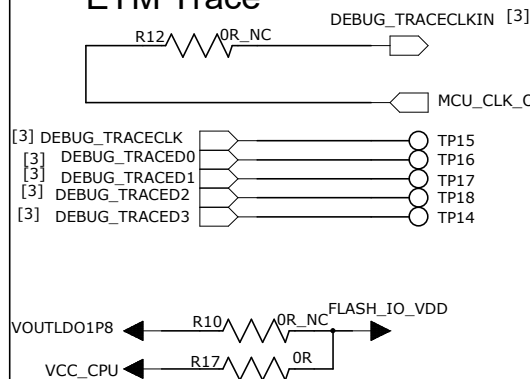
# GPIO



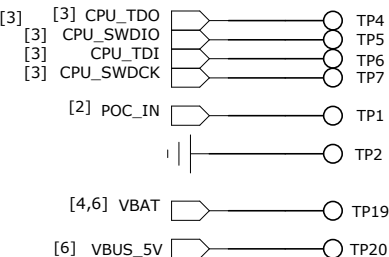
# ULP&UULP GPIO



# ETM Trace

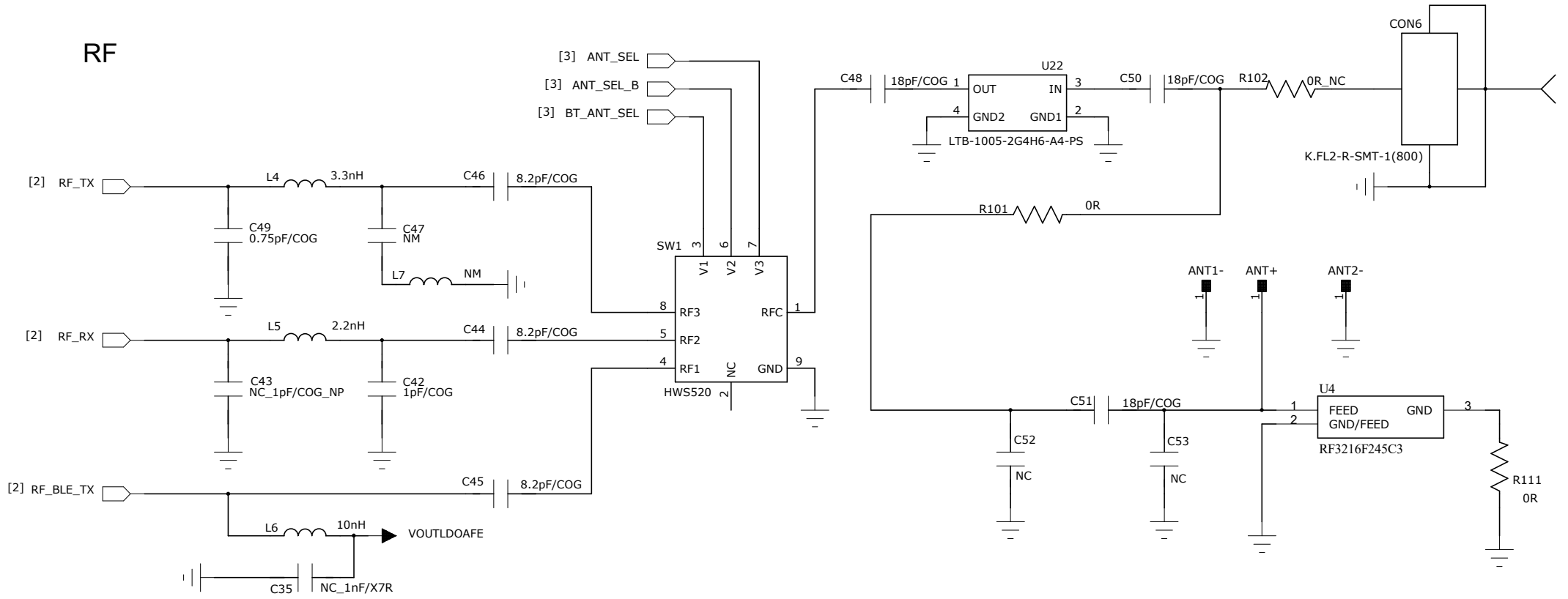


# JTAG

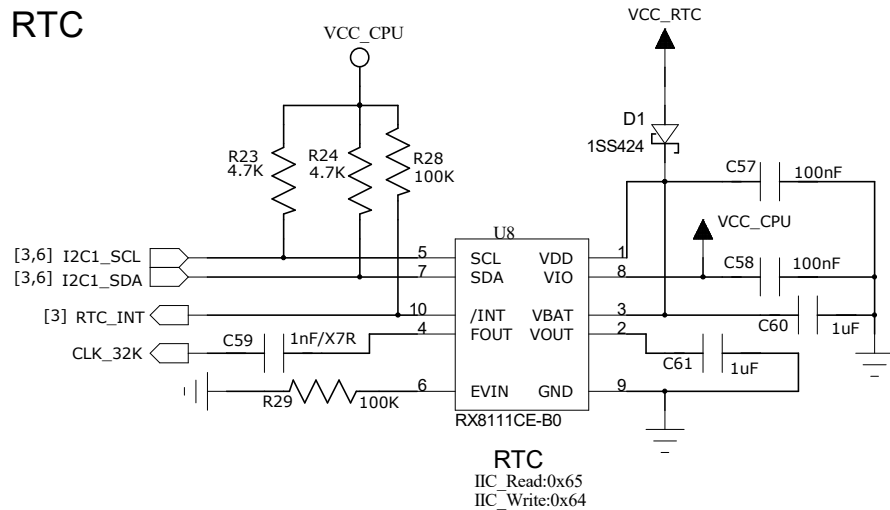


Title		
Cling_xxxx_xx_xx_V1.0		
Size	Number	Revision
A4		
Date:	Sheet of	
File:	Drawn By:	

# RF

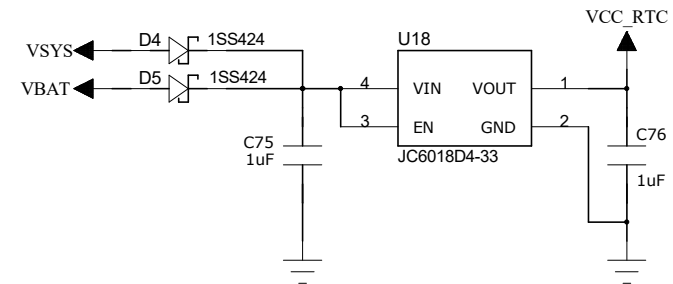


# RTC



**RTC**  
 IIC\_Read:0x65  
 IIC\_Write:0x64

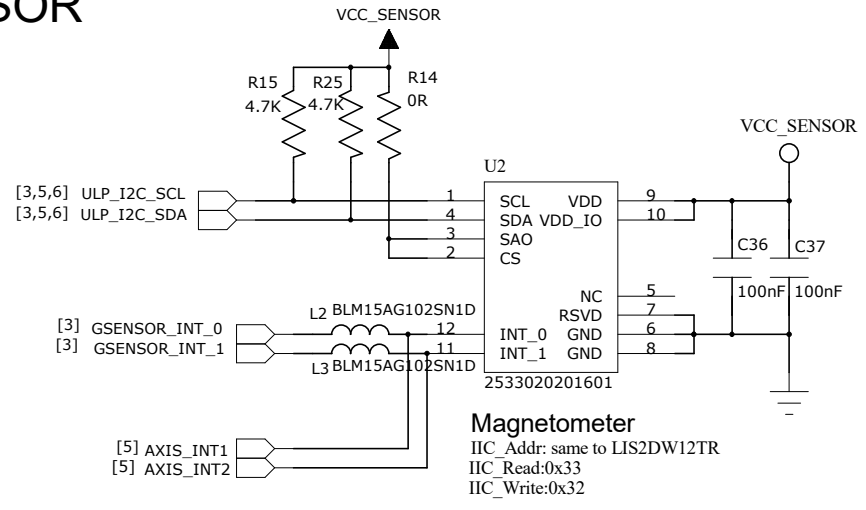
# RTC\_LDO



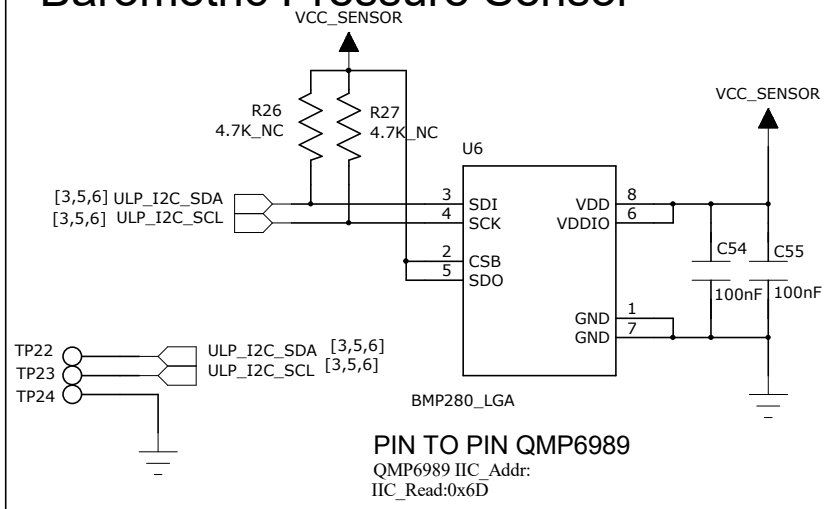
Title		
Cling_xxxx_xx_xx_V1.0		
Size	Number	Revision
A4		
Date:	Sheet of	
File:	Drawn By:	

# G-SENSOR

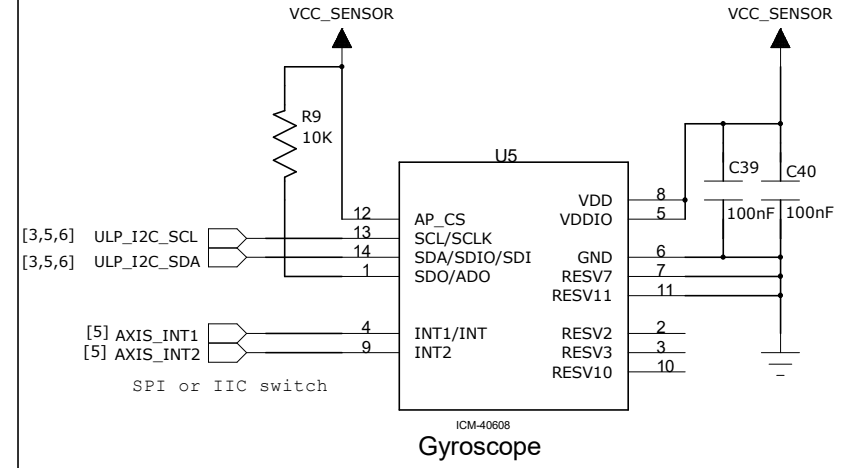
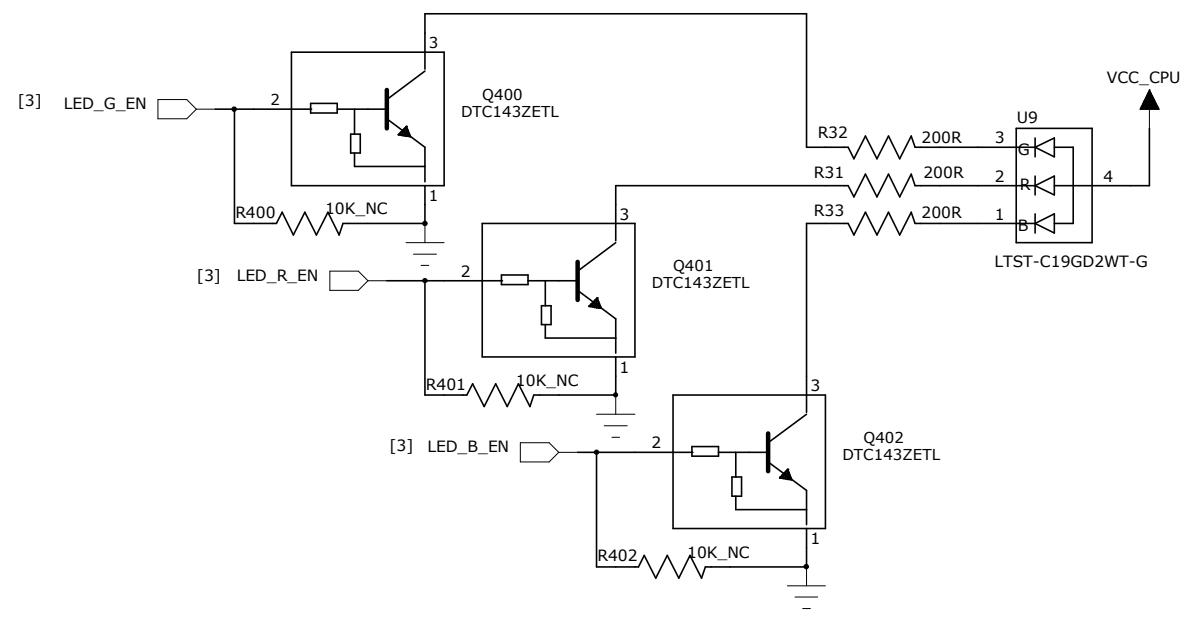
VCC\_RTC  
VCC\_CPU  
ULP\_I2C\_SCL  
ULP\_I2C\_SDA  
GSENSOR\_INT\_0  
GSENSOR\_INT\_1  
LED\_G\_EN  
LED\_R\_EN  
LED\_B\_EN  
SENSOR\_PWR\_ON



# Barometric Pressure Sensor

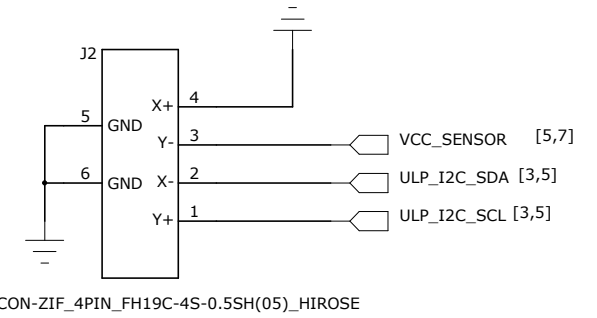
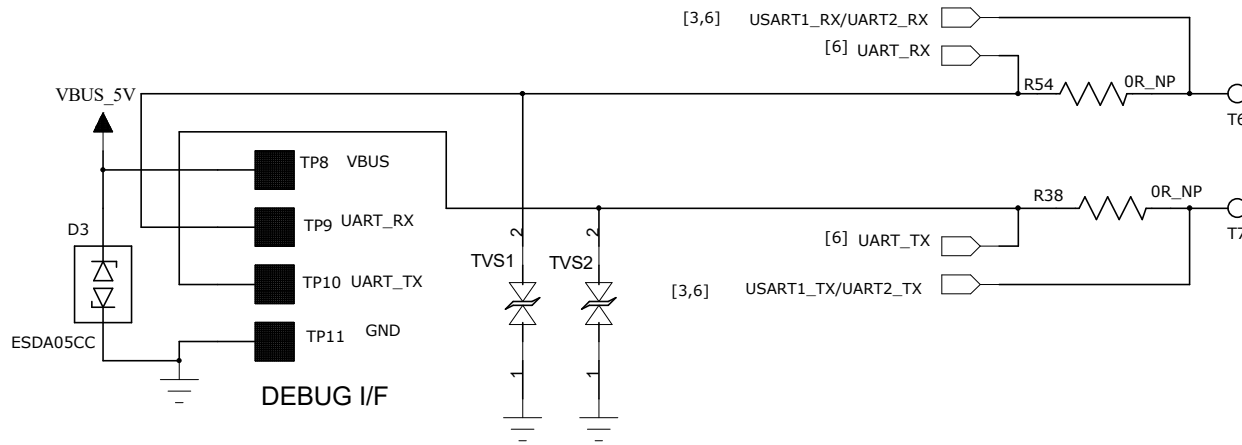


# RGB LED

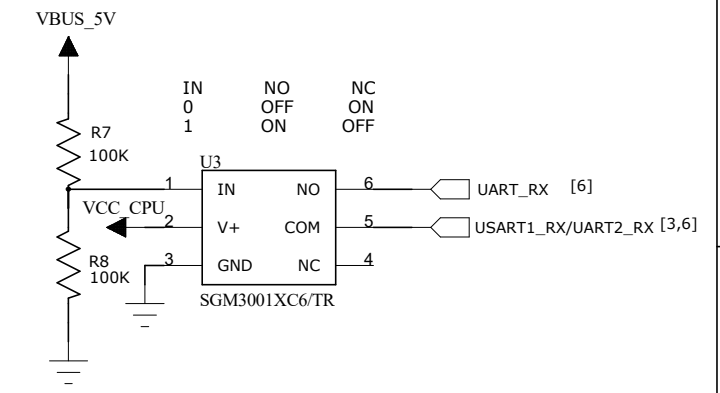
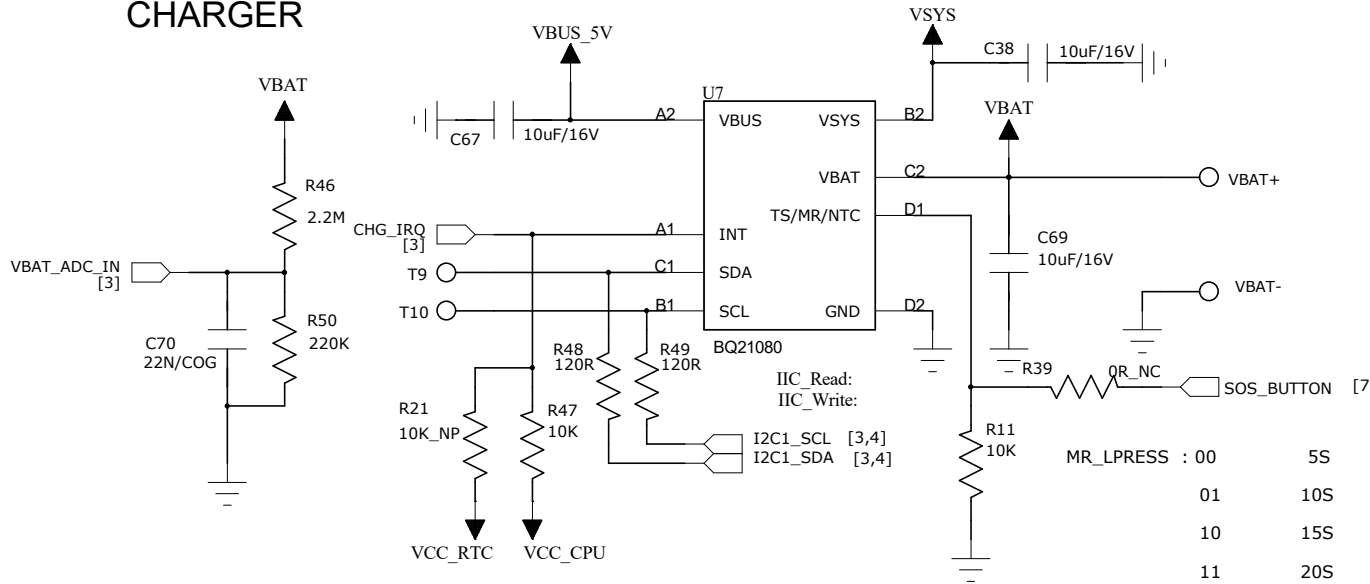


Title		
Cling_xxxx_xx_xx_V1.0		
Size	Number	Revision
A4		
Date:	Sheet of	
File:	Drawn By:	

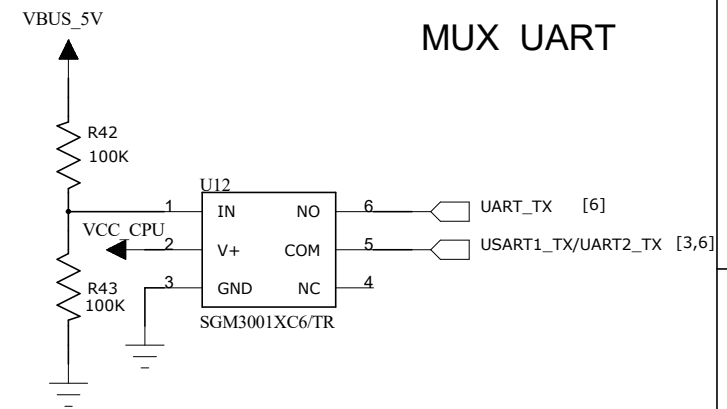
# 4PIN I/O



# CHARGER

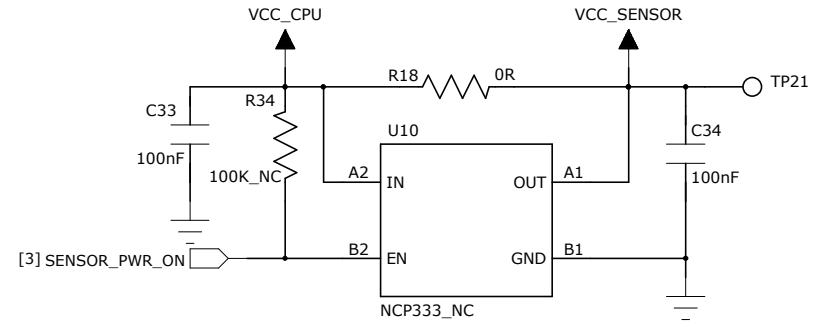
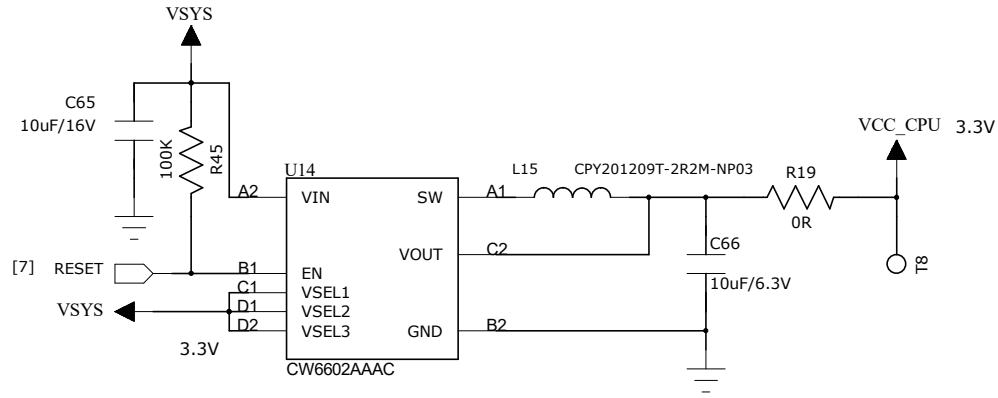


# MUX UART

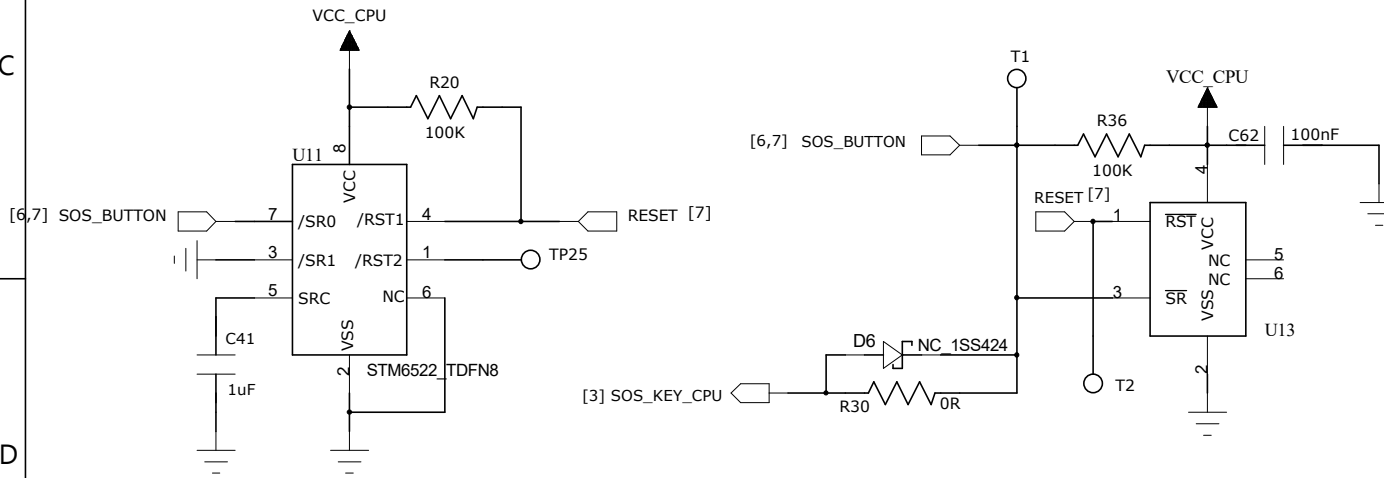


Title		
Cling_xxxx_xx_xx_V1.0		
Size	Number	Revision
A4		
Date:	Sheet of	
File:	Drawn By:	

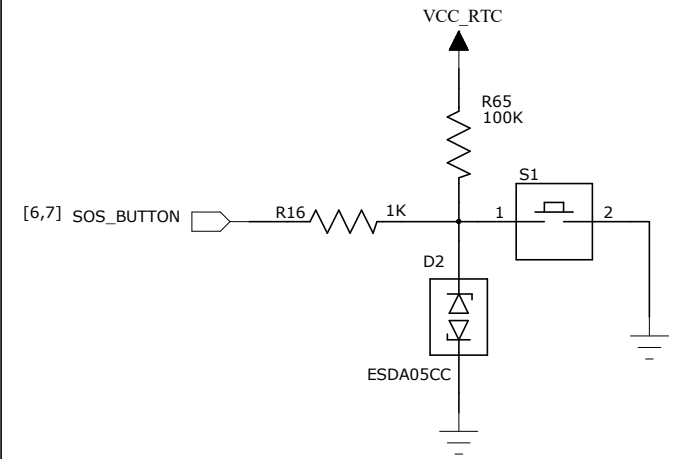
### VCC\_CPU\_3.3V



### SOS\_KEY



### SOS BUTTON



Title		
Cling_xxxx_xx_xx_V1.0		
Size	Number	Revision
A4		
Date:	Sheet of	
File:	Drawn By:	