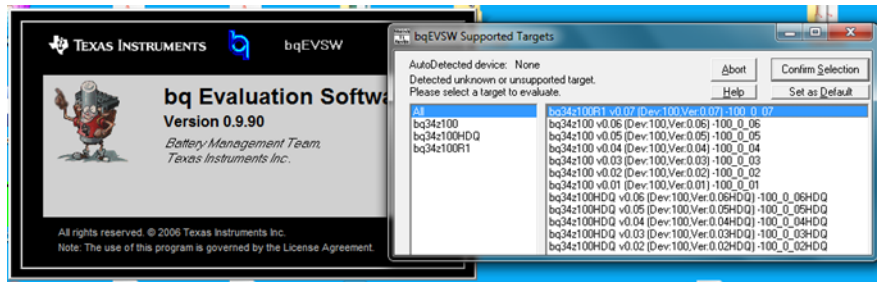
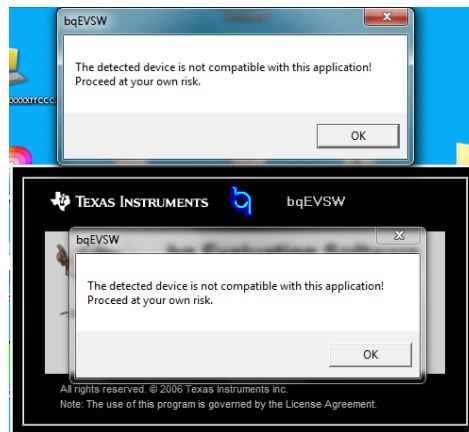


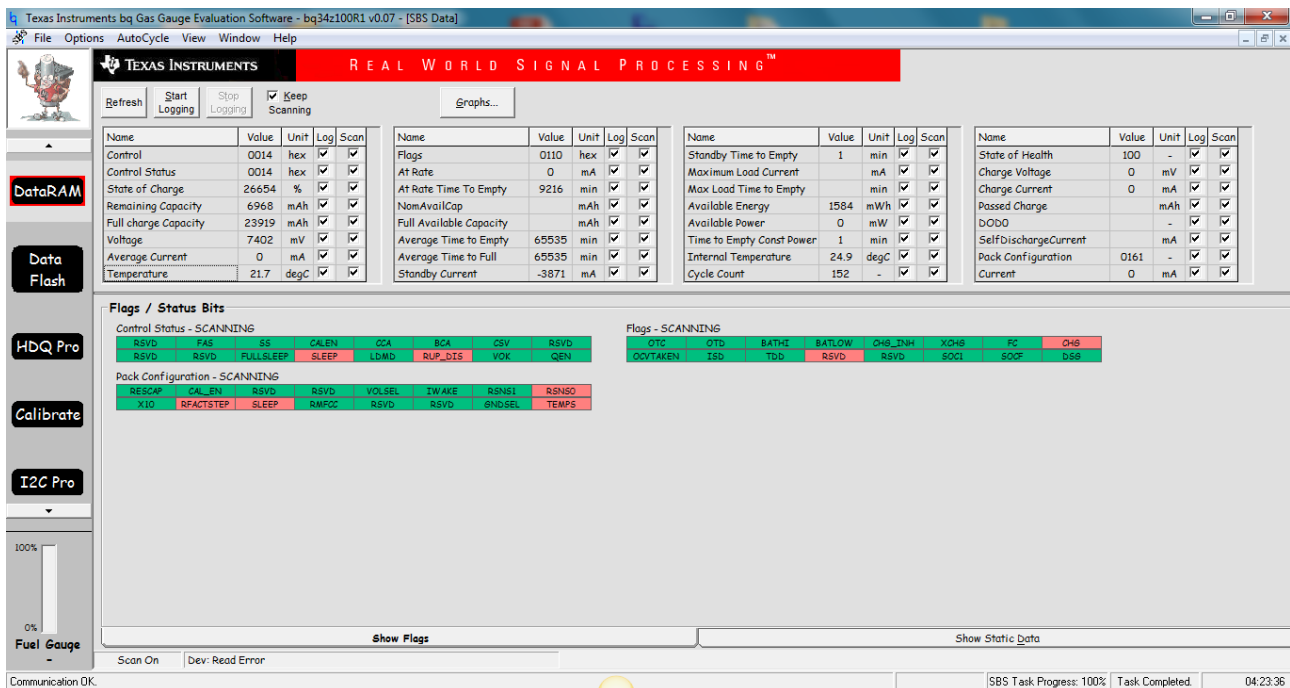
1. With 7,4V conncted to EVM (BAT+ and BAT-) and EV2300 (J7) connected to EVM I2C and USB to PC
2. Start up the bq EV sw and select all press enter.



3. This message appears:



4. After click ok twice the program start. The communication is ok!



- Click on Data Flash ikon and This message appears.

The screenshot shows the Texas Instruments bq Gas Gauge Evaluation Software interface. A dialog box titled "bqEVS" is displayed in the center, with the message: "The Data Flash configuration file target does not match the detected target!". The dialog has an "OK" button.

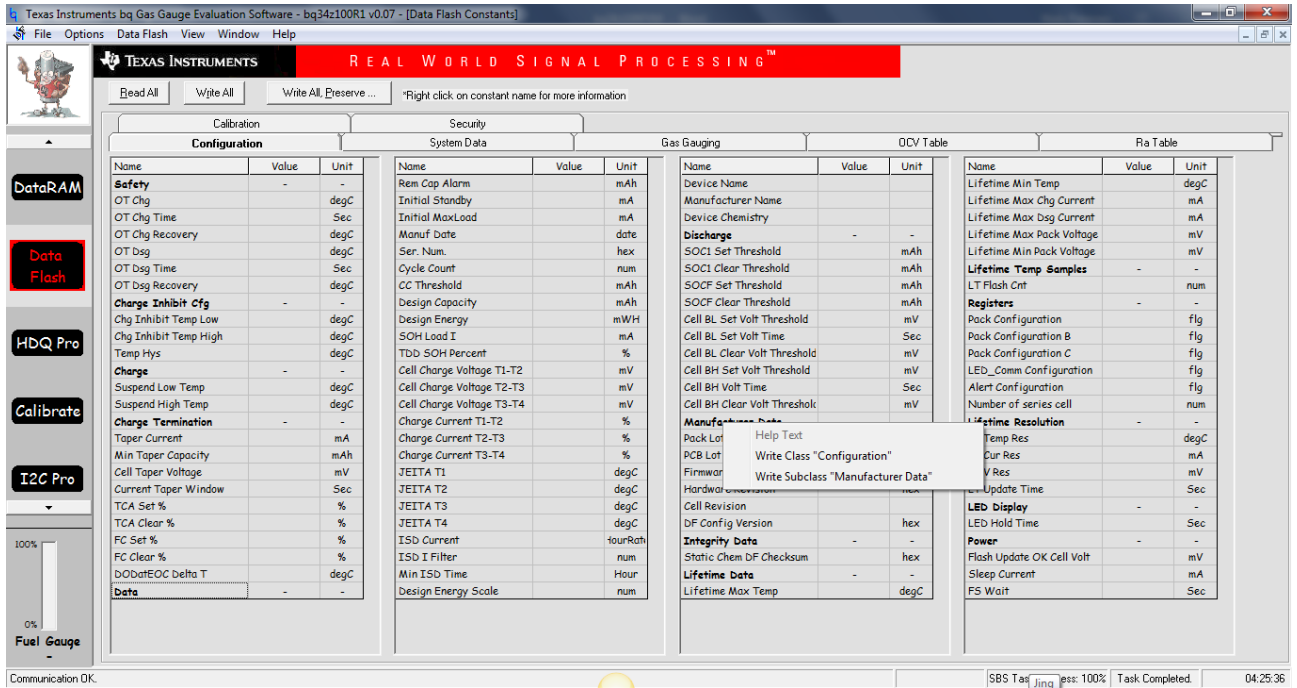
The background interface includes a menu bar (File, Options, AutoCycle, View, Window, Help), a toolbar (Refresh, Start Logging, Stop Logging, Keep Scanning, Graphs...), and a sidebar with buttons for DataRAM, Data Flash, HDQ Pro, Calibrate, and I2C Pro. The main area displays various battery parameters in tables, including Control, Flags, Standy Time to Empty, Maximum Load Current, Max Load Time to Empty, Available Energy, Available Power, Time to Empty Const Power, Internal Temperature, Cycle Count, State of Health, Charge Voltage, Charge Current, Passed Charge, b000, Self Discharge Current, Pack Configuration, and Current.

- After click ok this message appears

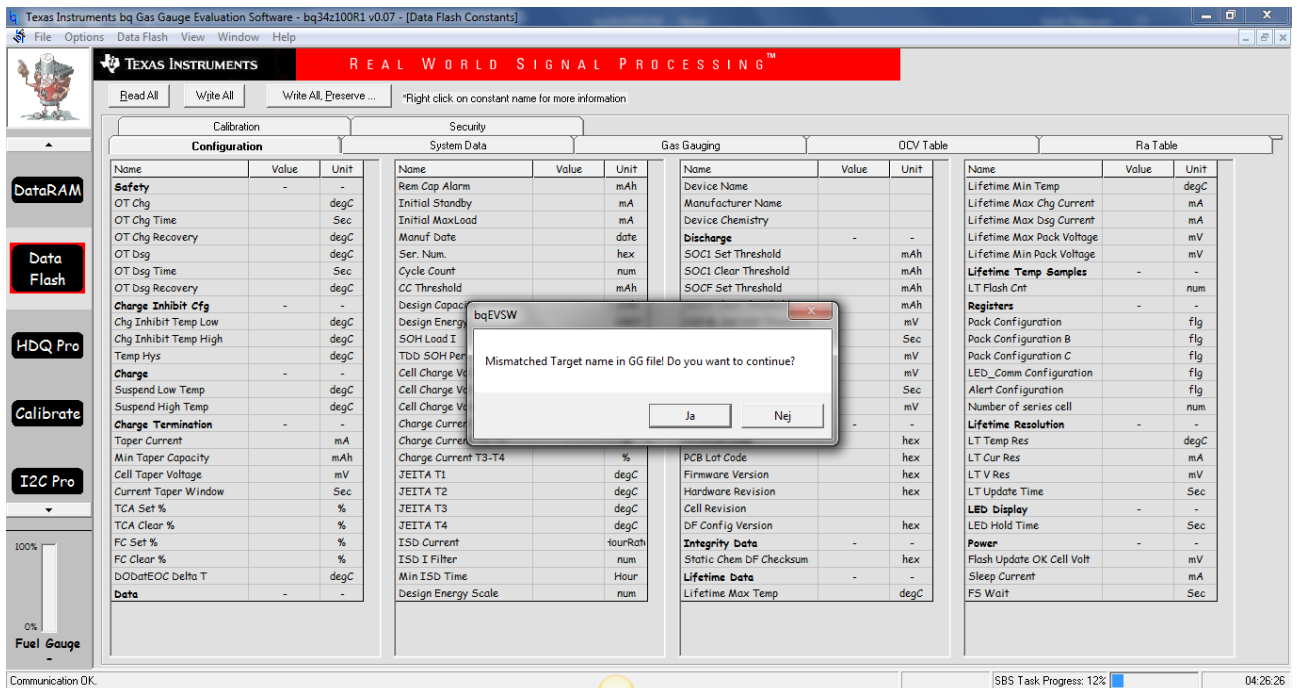
The screenshot shows the same Texas Instruments bq Gas Gauge Evaluation Software interface as the previous one. The dialog box titled "bqEVS" is displayed in the center, with the message: "The Data Flash configuration file target does not match the detected target! Select 'Yes' to proceed at your own risk.". The dialog has two buttons: "Ja" (Yes) and "Nej" (No).

The background interface is identical to the previous screenshot, showing the same menu bar, toolbar, sidebar, and main data tables.

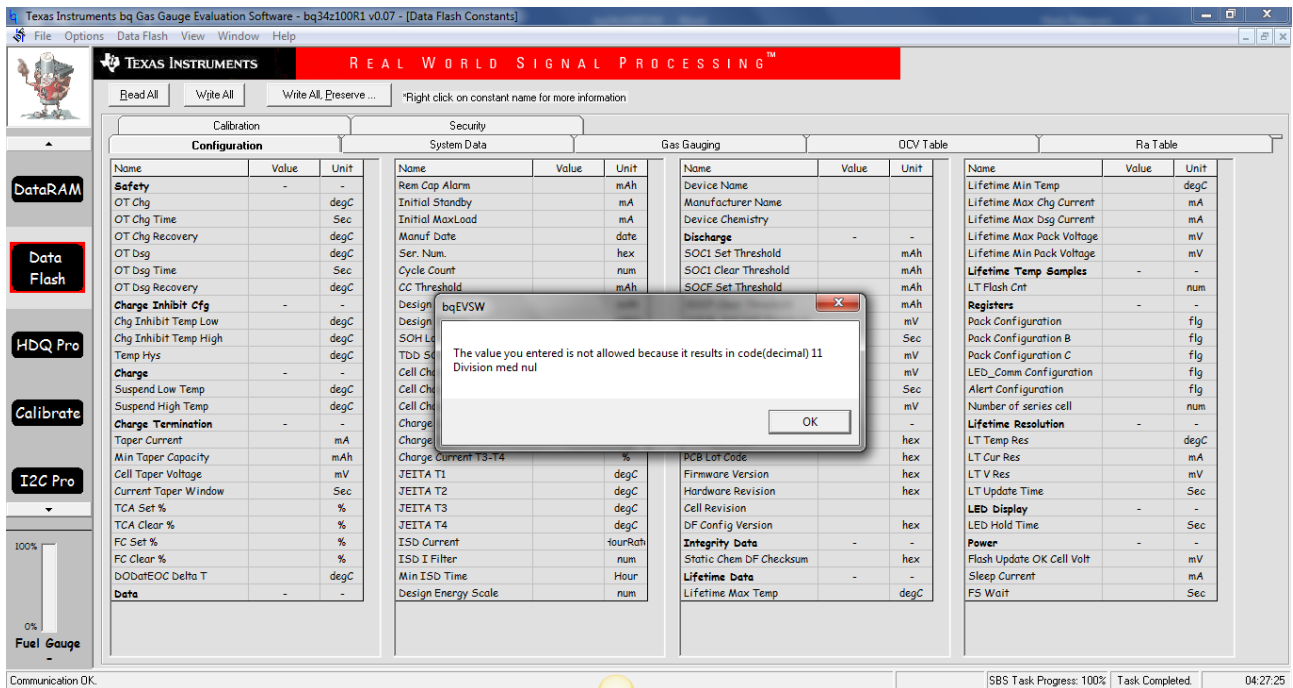
7. After click yes this message appears:



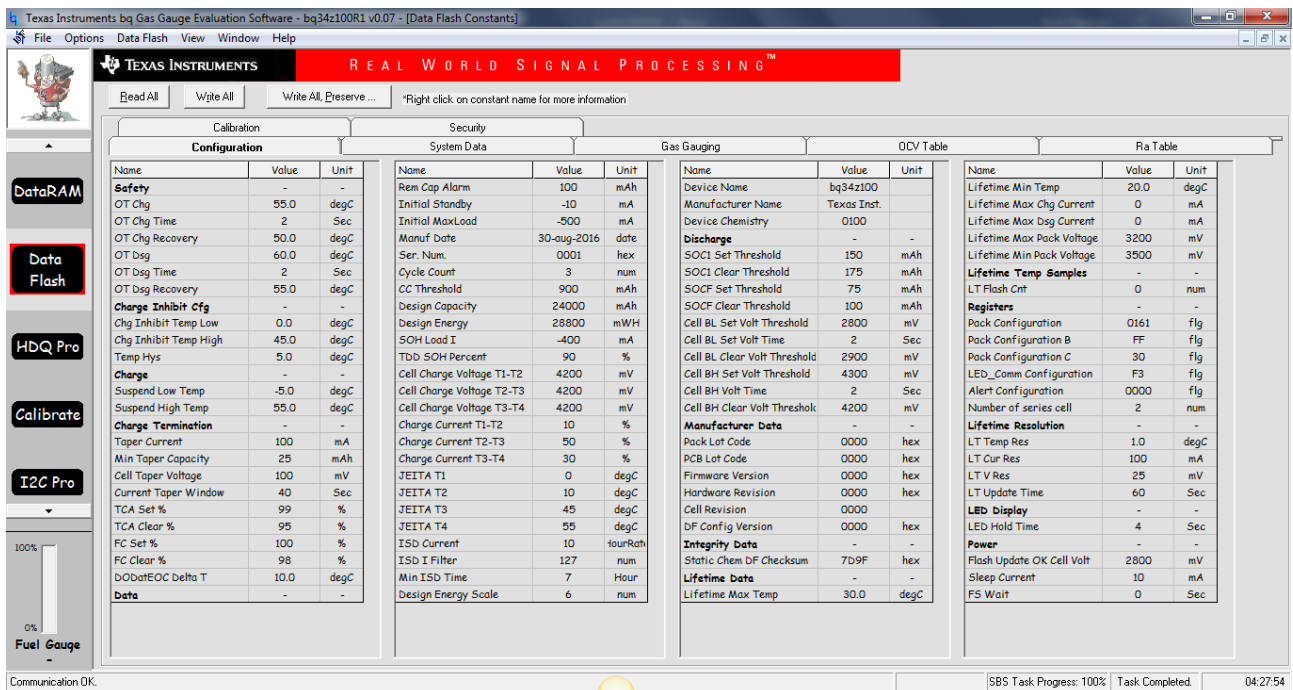
8. After import previously used setup file (attached DPEactive.gg) This message appears.



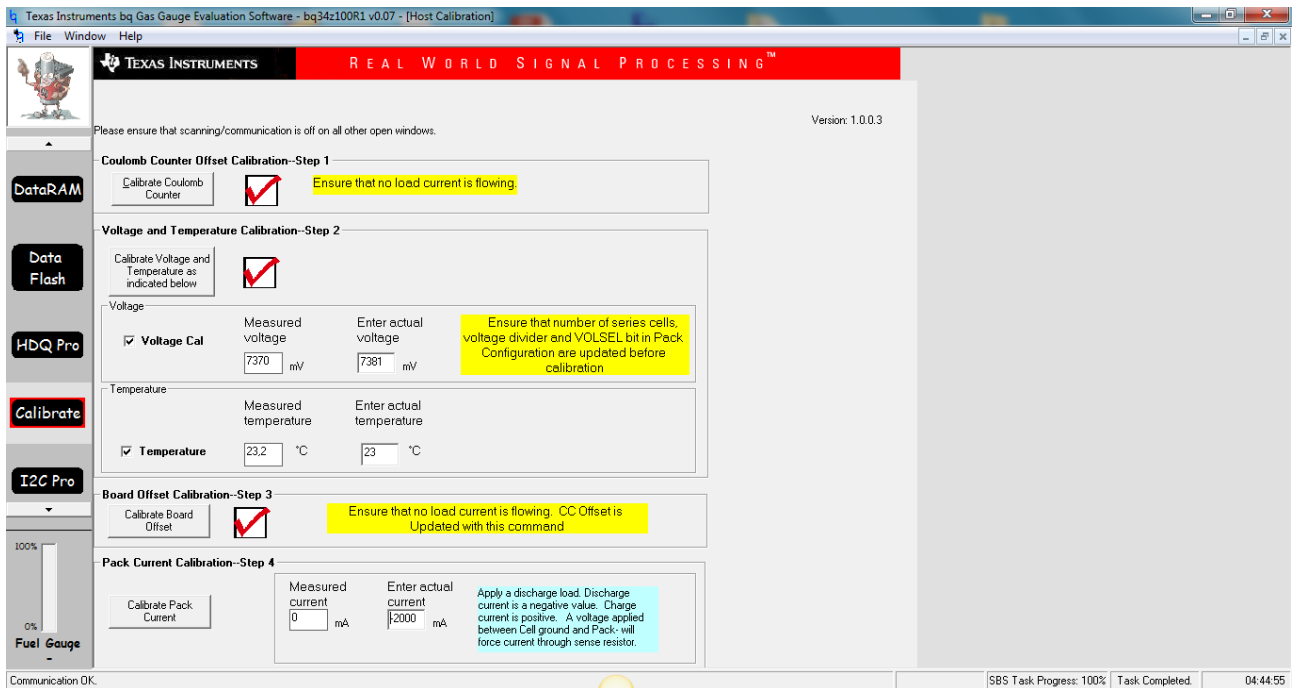
9. After click ok this message appaers



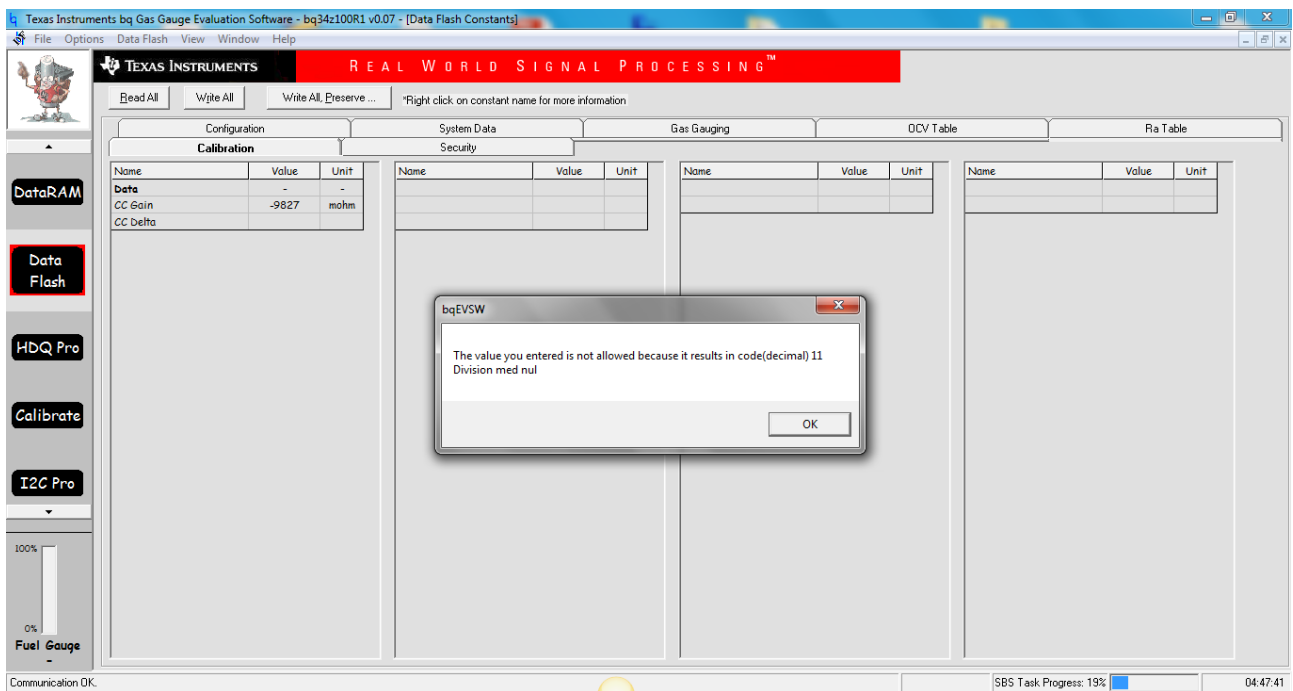
10. After click ok the setup from DPEactive.gg appears



11. Start to calibrate, but no current is measured?



12. Return to Data Flash and look at calibration pane, when this message appears



Why can I not measure the current and why comes all this error messages?

Please HELP 😊