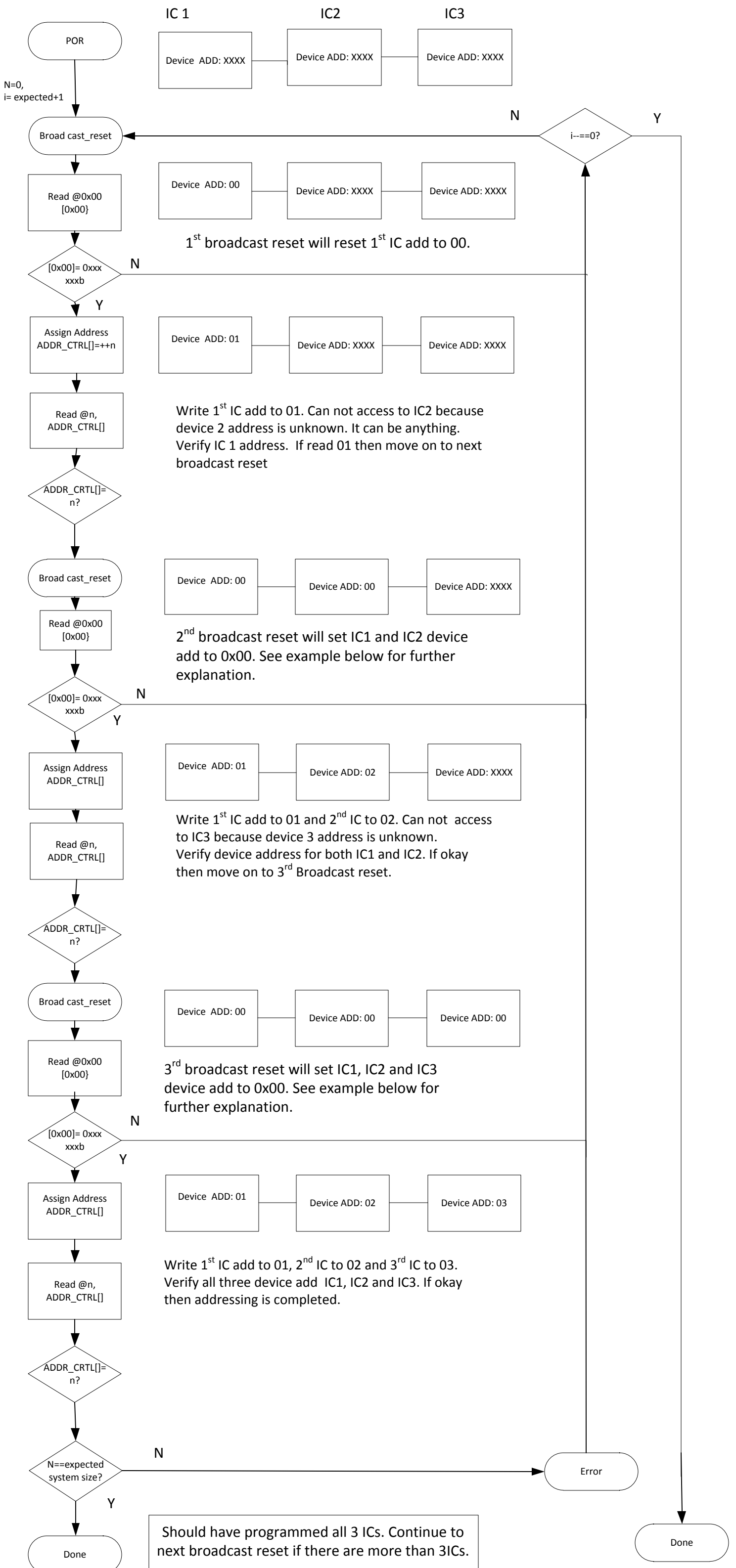


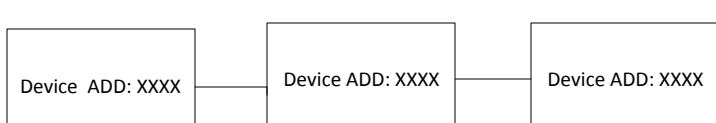
Flow chart for programming 3 Ics.
Datasheet has flow chart for programming more than 3 ICs.



Broadcast messages are only received by **devices with a valid address, and the next higher device**. Any device with an address of 0x00 blocks messages to devices above it. A broadcast message may not be received by all devices in a stack in situations where some devices do not have a valid address.

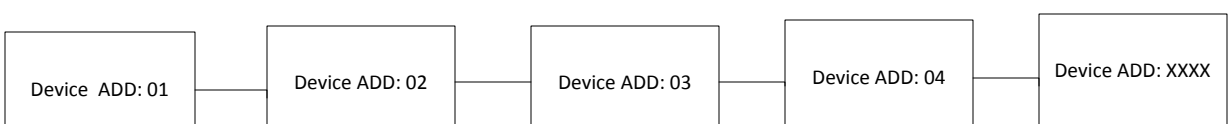
Example of broadcast_reset

Ex 1



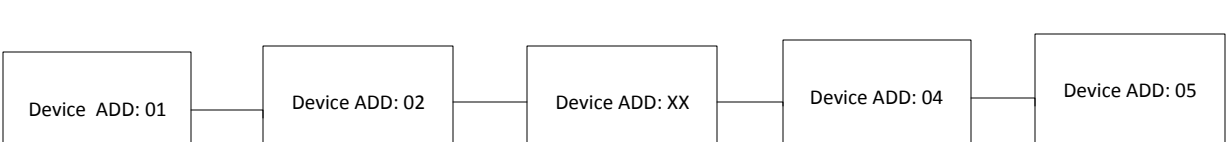
Since device 1 does not have valid address, therefore, it will reset device 1 only.

Ex 2



Since device 1,2,3,4 has valid address. It will reset device 1,2,3,4 and the next higher device(device5).

Ex 3



Device can not communicate if individual device does not have right address. Host can only talk to device 1 and device 2.

Ex 4



Device 1 has valide address. It will reset device 1 and the next higher device(device2). It will reset device 1 and device 2.