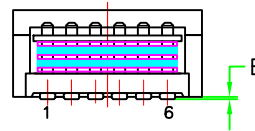
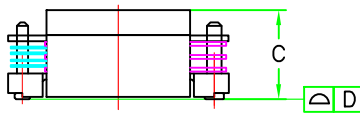
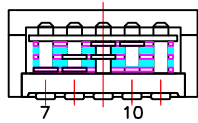


MECHANICAL SPECIFICATIONS		
DIMENSIONS	MIN	MAX
PHYSICAL PARAMETERS(inch/mm)		
A: WIDTH		1.160 /29.46
B: LENGTH		1.050 /26.67
C: HEIGHT		.474 /12.04
D: COPLANARITY WITHIN	.004 /0.10 (100%)	
E: SEATING PLANE	.009 /0.229	



**Coilcraft** Cary, IL 60013  
Coil Design Data  
FORM-CW027 Rev. J

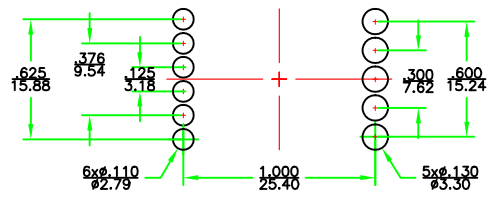
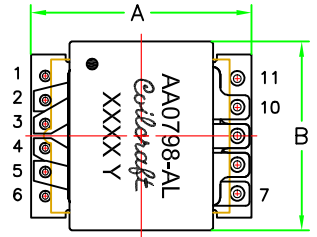
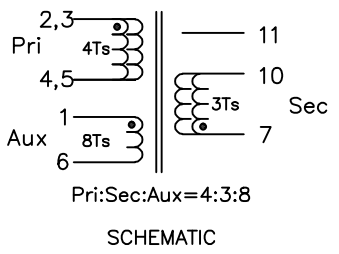
Customer  
Dynacolor  
Customer P/N  
AA0798-AL Rev. C  
CCI Sample#/ID#  
AA0798-AL  
EWO Date  
C1-JASON-22082 2019/02/28  
Engineer  
PAN.

Layers  
0,CDD,AP  
APPROVAL DATE  
Eng.Mgr.

**PRODUCT DESCRIPTION**

Vin=24~60Vdc, Vo=12V/8A, Vaux=34V  
Active Clamp Forward, Dmax=70%, Fsw=202KHz

REVISION RECORD	
ECN#	DESCRIPTION



**ELECTRICAL SPECIFICATIONS**

"ALL ELECTRICAL SPECIFICATIONS @ 25°C"

INDUCTANCE (uH) (CSC) 200KHz 0.5VRMS INPUT OADC		
PINS	MIN	MAX
2,3-4,5	96±30%	

TURNS RATIO APPLY 10KHz 1.0VRMS TO PIN2-4		
MEASURE PINS	MIN	MAX
3 - 5	0.960	1.040
7 - 10	0.720	0.780
1 - 6	1.920	2.080

LEAKAGE INDUCTANCE (uH) 200KHz 0.5VRMS		
TEST PINS	SHORT PINS	MAX
2,3-4,5	7,8,9,10	0.25

DC RESISTANCE(mOHMS)		
PINS	MIN	MAX
2 - 4		7.2
3 - 5		7.2
7 - 10		3.15
1 - 6		500

HI POT (Leakage current can not exceed 3mA) VAC TO BE APPLIED FOR 60 SECONDS		
VOLTAGE	FROM PINS	TO PINS
1500	2, 3	7
500	1, 2,3, 7	CORE

LAYER:

WARNING! THIS DRAWING, AND ALL INFORMATION CONTAINED WITHIN, IS PROPRIETARY TO COILCRAFT AND SHOULD NOT BE DIVULGED WITHOUT PRIOR ENGINEERING CONSENT