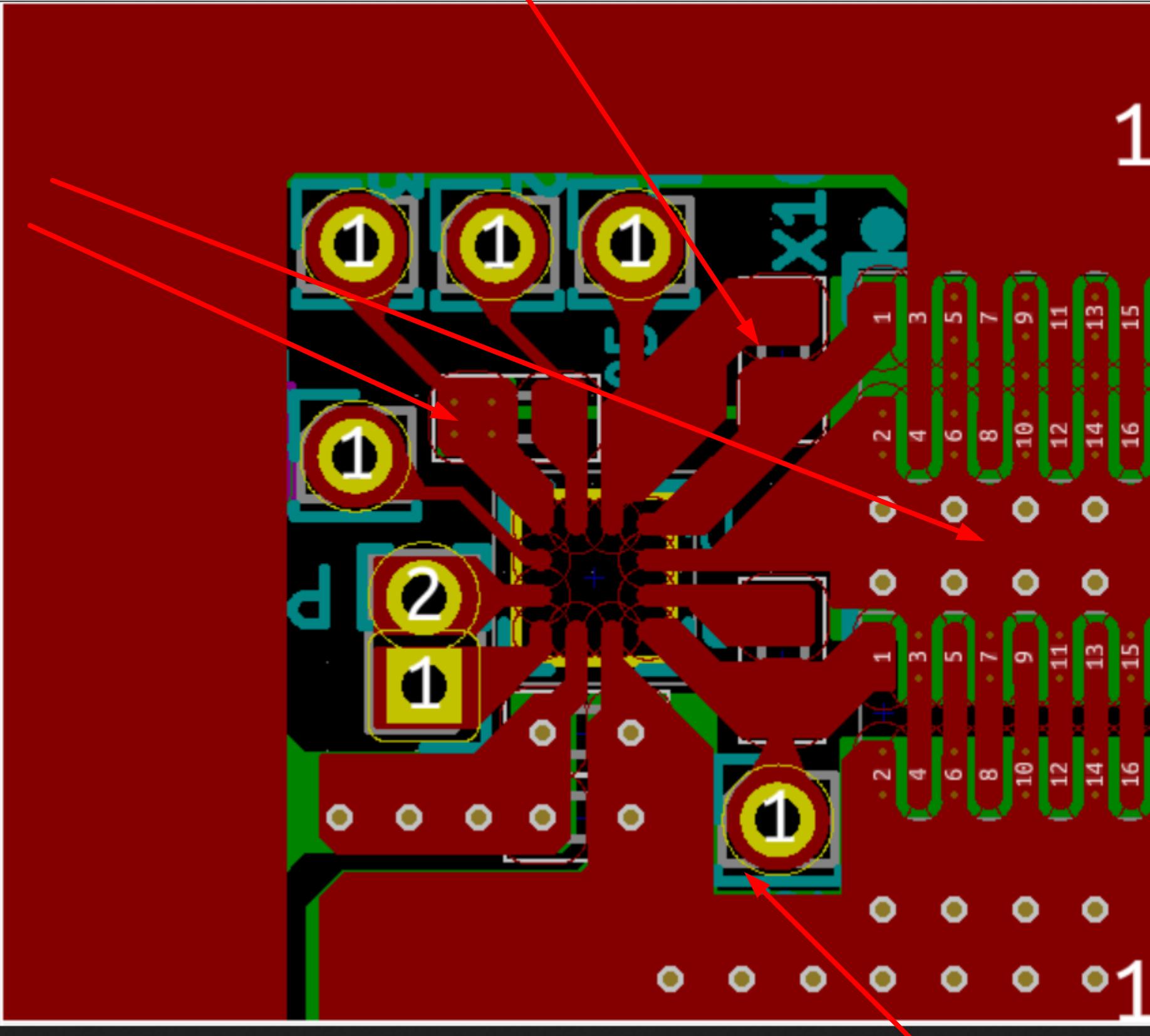


This gate resistor is protruding the gate loop larger. It might need to be rotated like in the LMG1205HBEVM layout

The HS connection from the switch node to the HS pin can be lower inductance with an HS plane



LMG1205HBEVM layout shows the HS plane connected on the adjacent layer to allow connection to both HS pins with vias close to the pins to allow a low inductance connection.

Gate resistor rotated

This through hole is making the lowside drive loop bigger

