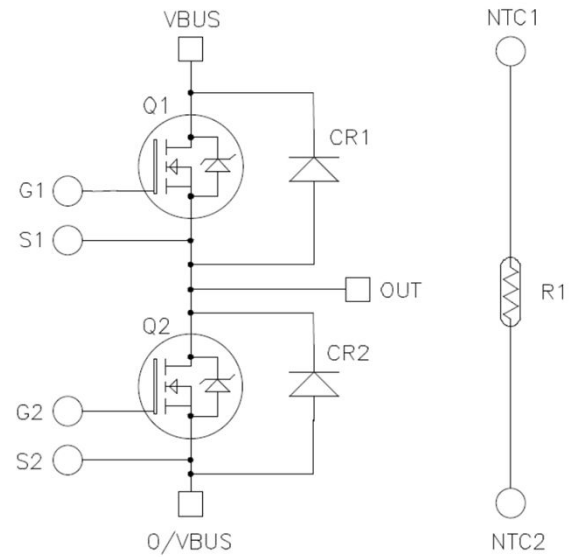


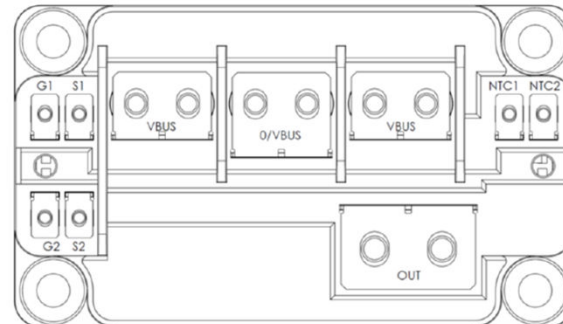
Power Modules connected to the driver board  
using 20 mm spacers



**Figure 1 • Electrical Schematic of MSCSM120AM02CT6LIAG Device**



**Figure 2 • Pinout Location**



All ratings at  $T_j = 25\text{ }^{\circ}\text{C}$ , unless otherwise specified.

**Caution:** These devices are sensitive to electrostatic discharge. Proper handling procedures should be followed.