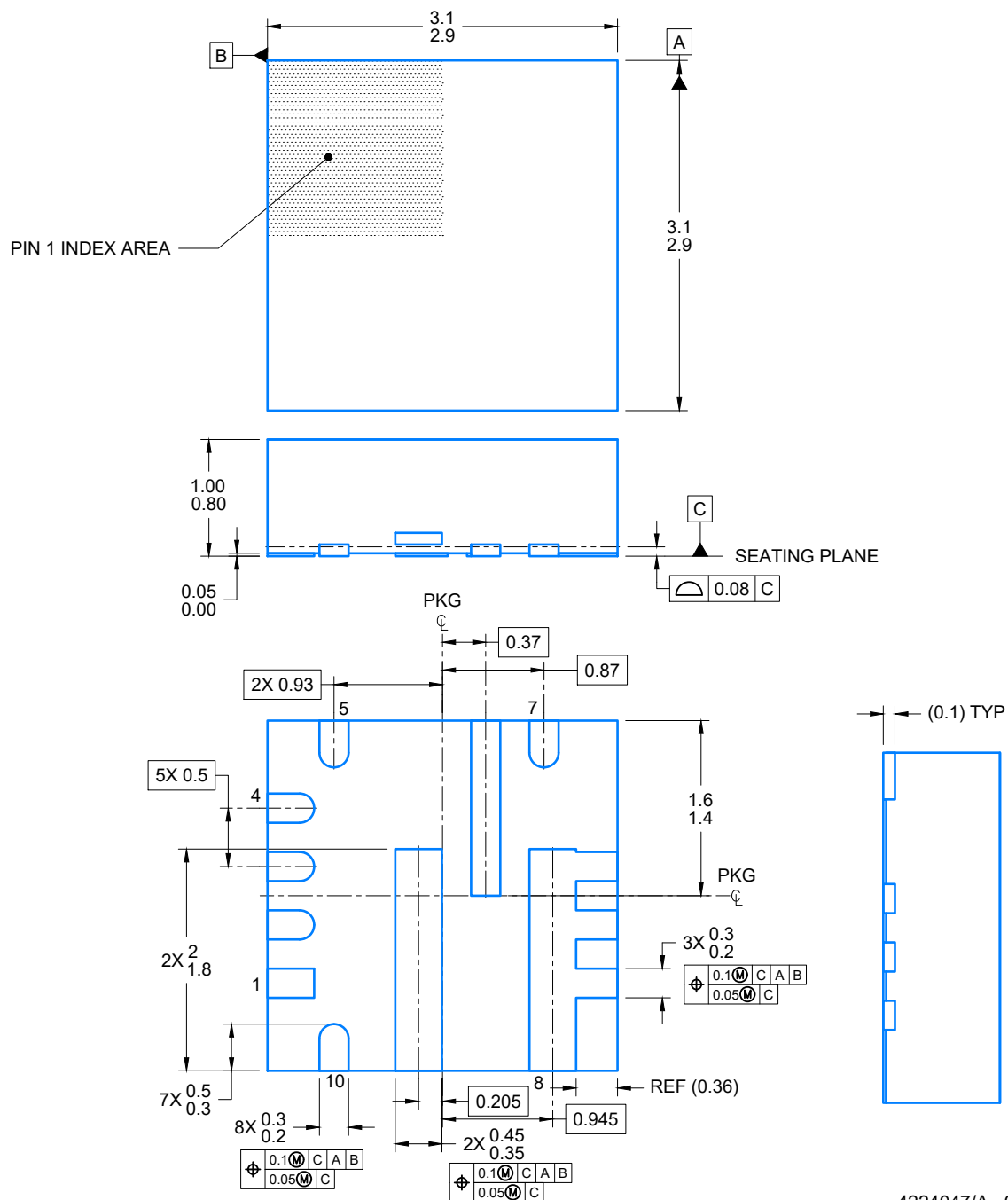


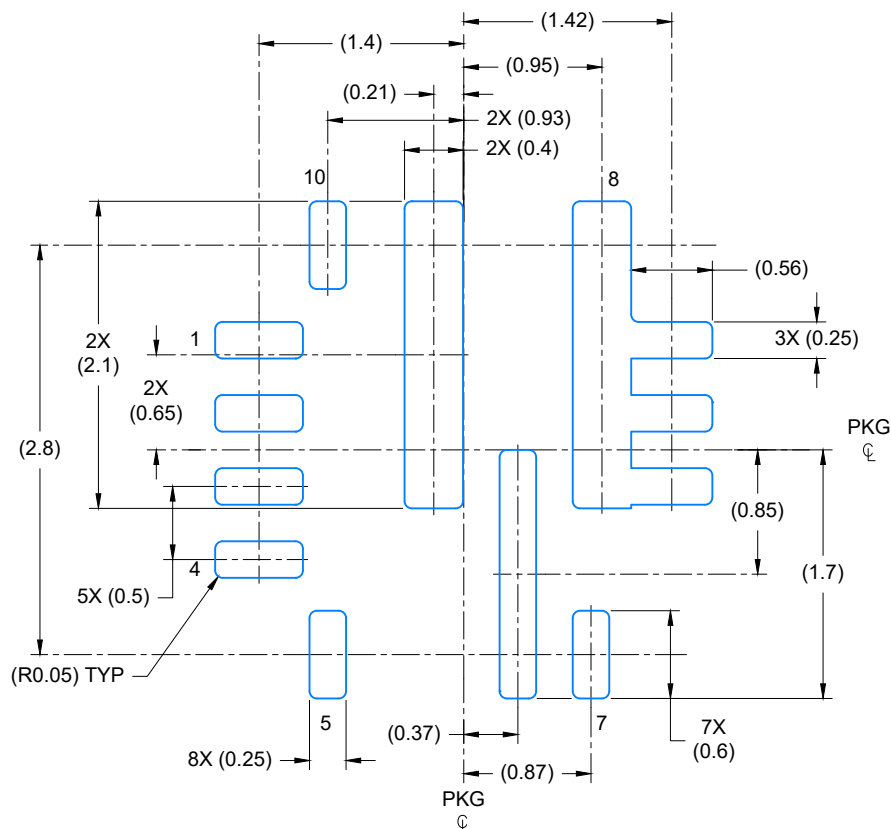
PLASTIC QUAD FLAT-NO LEAD



4224047/A 01/2018

NOTES:

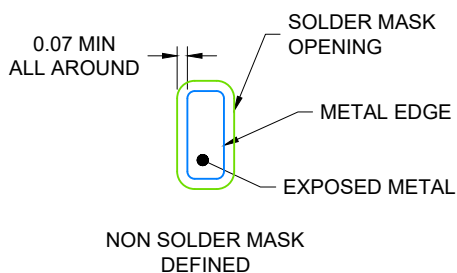
1. All linear dimensions are in millimeters. Any dimensions in parenthesis are for reference only. Dimensioning and tolerancing per ASME Y14.5M.
2. This drawing is subject to change without notice.



## LAND PATTERN EXAMPLE

EXPOSED METAL SHOWN

SCALE: 20X



4224047/A 01/2018

NOTES: (continued)

3. For more information, see Texas Instruments literature number SLUA271 ([www.ti.com/lit/sluea271](http://www.ti.com/lit/sluea271)).
4. Solder mask tolerances between and around signal pads can vary based on board fabrication site.

PLASTIC QUAD FLAT-NO LEAD