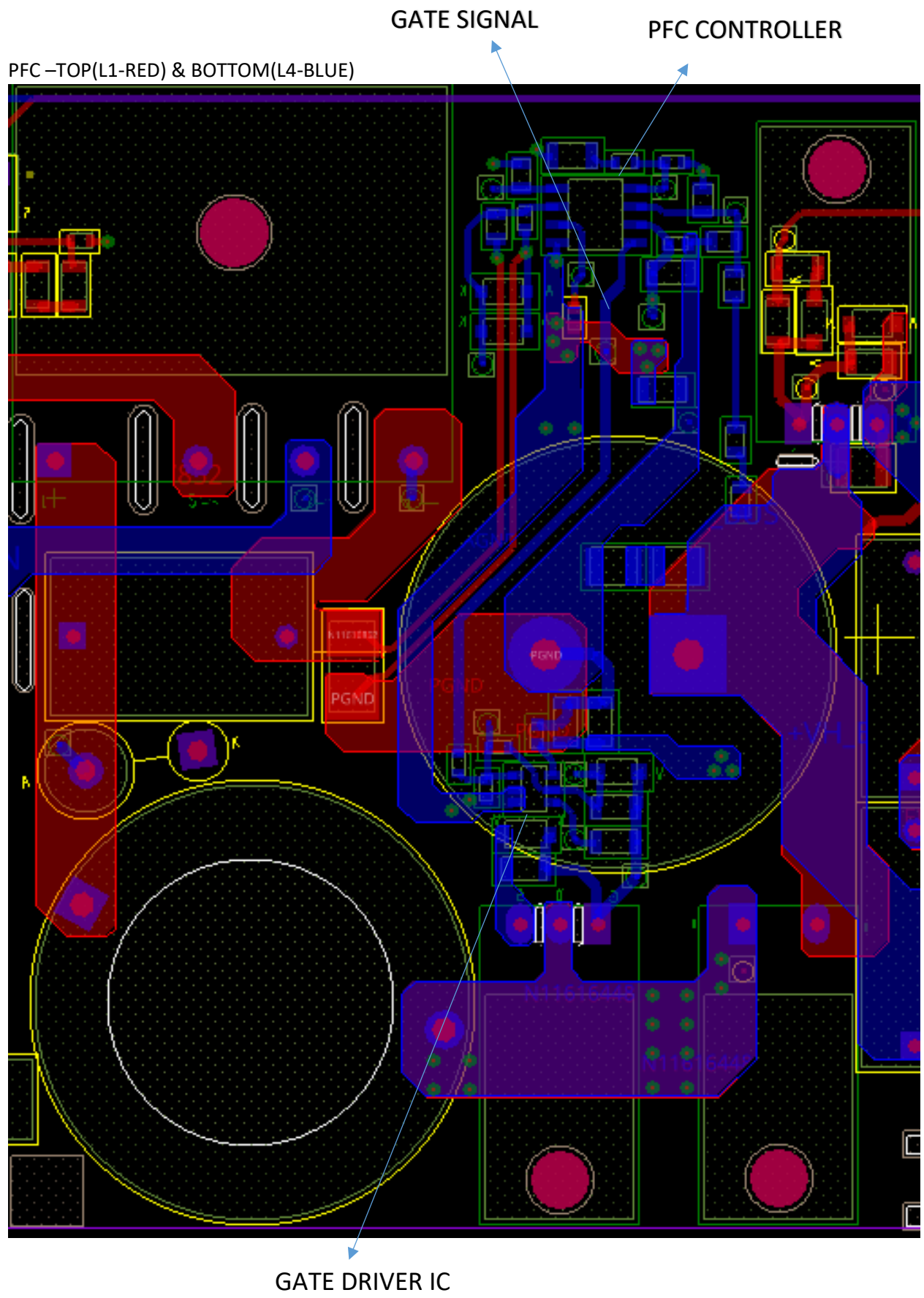
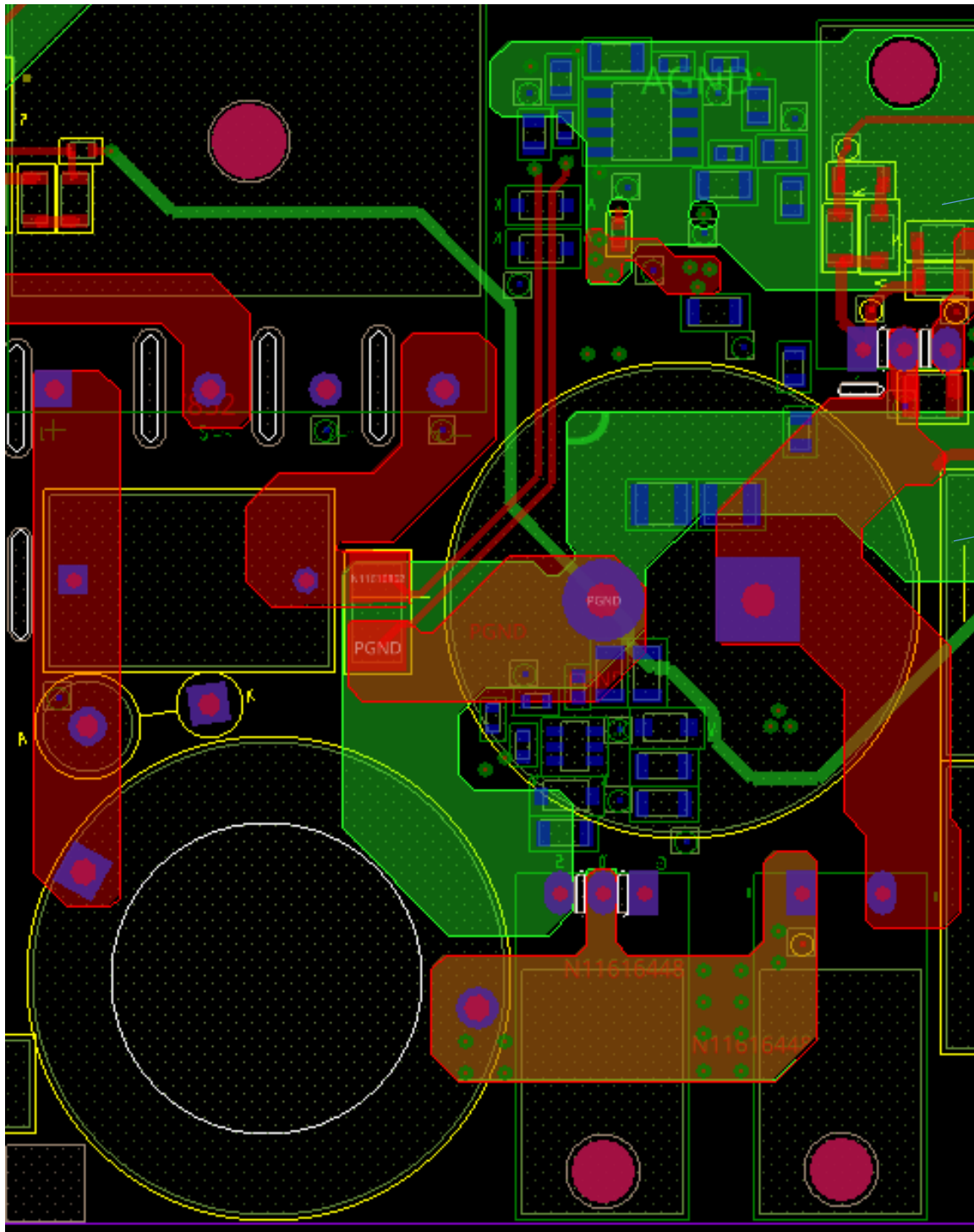


SCH- PFC SETION

- 1)Supply (Pri_15V with respect to PGND) comes from control card
- 2)PGND is shorted to 400V bus ground
- 3)PFC driver(ucc27511aQ) and PFC IC(ucc28180D) ground refernce is AGND
- 4) AGND and PGND are shorted through a 0 ohm resistor
- 5) All below pictures are showing the PFC layout which includes 4 layers indicated with arrow



PFC -TOP(L1-RED) & GND(L2-GREEN)



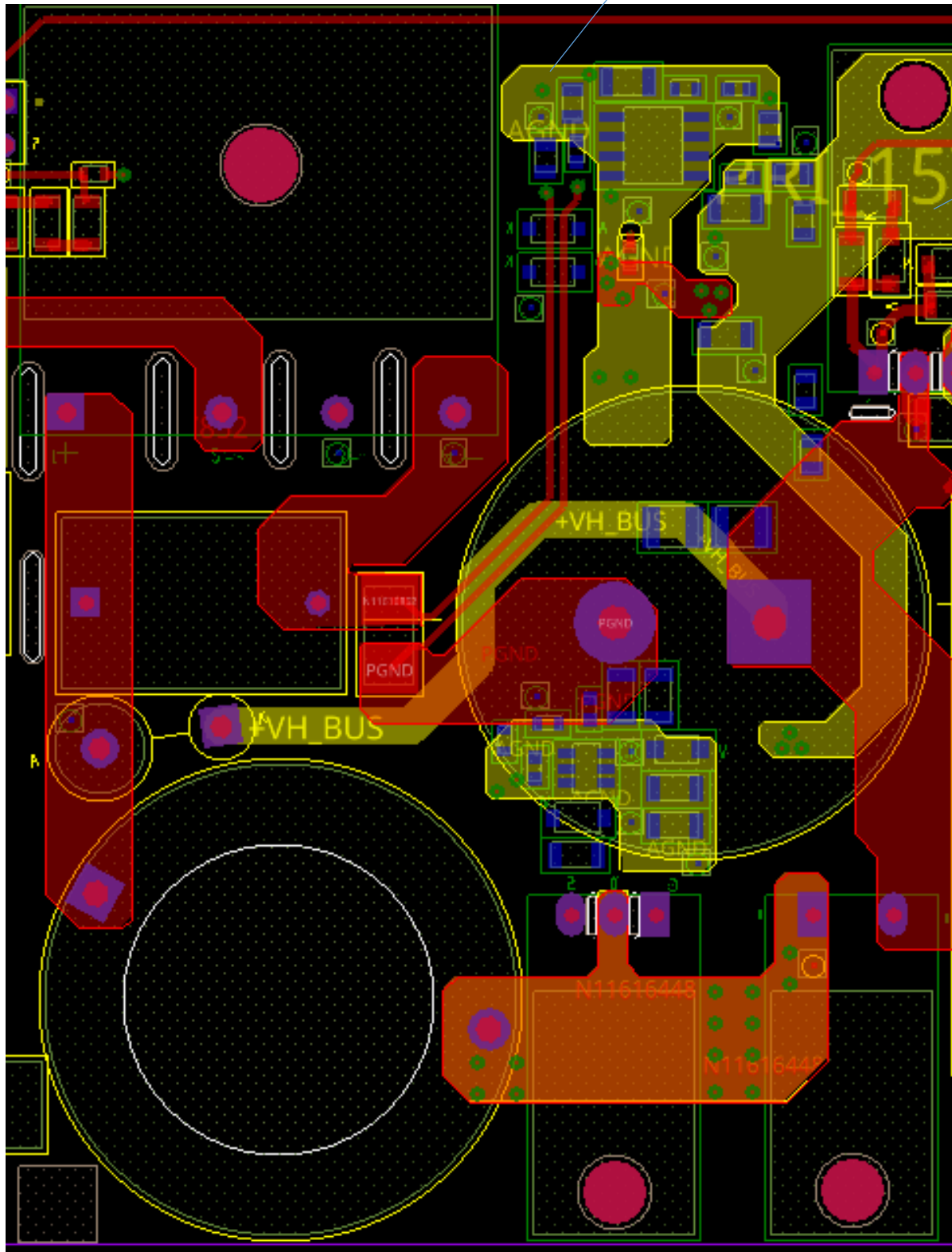
AGND FROM
CONNECTOR

PGND

PFC-TOP(L1-RED) & POWER(L3-YELLOW)

AGND

PRI_15V
FROM
CONNECTOR



PFC (L1-TOP LAYER)

