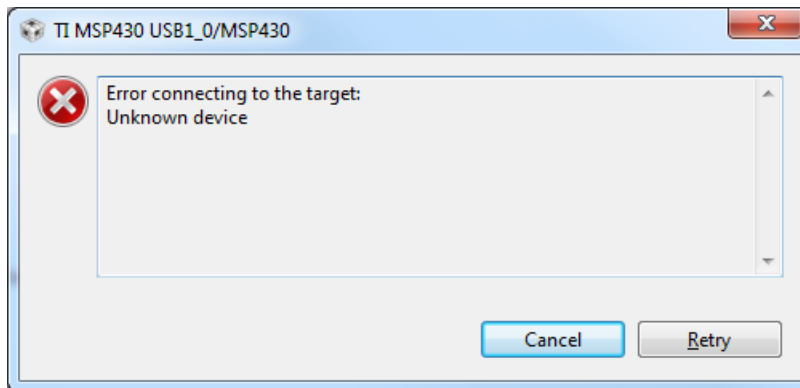
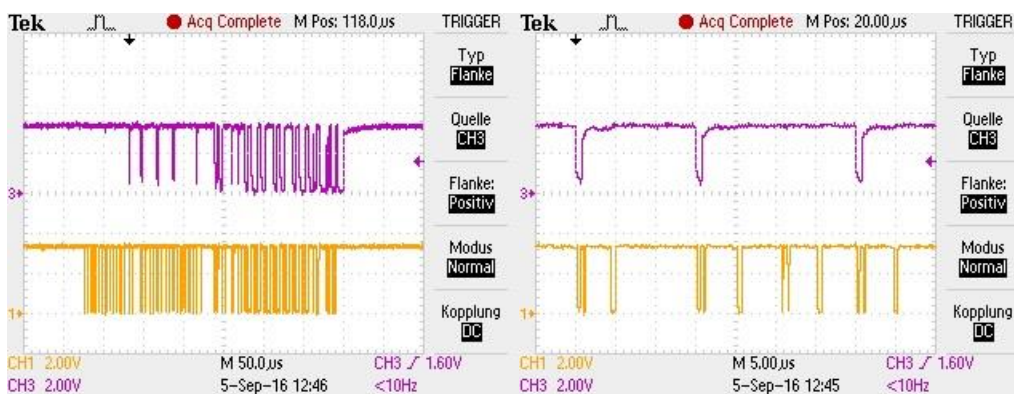
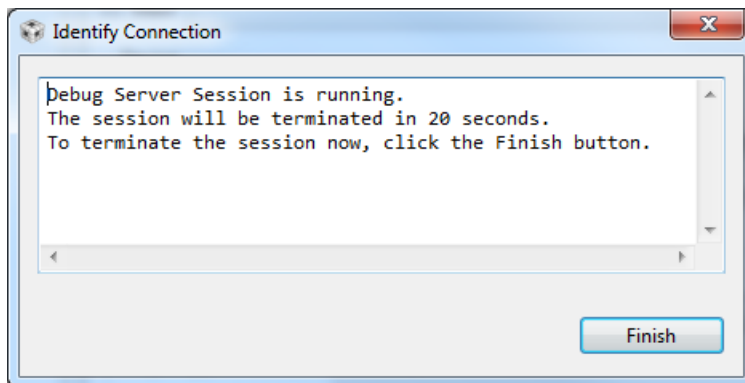


I am using the Code Composer Studio and the MSP430 for the first time and get some problems during the start-up of the TIDA-00449. When I start debugging, CCS gives the error message below.



I use a MSP-Fet430UIF Debug Interface which is connected like in the datasheet. In CCS the right device is selected in the target configuration file and the connection to the MSP-FET430UIF is the right one. When I click on the identify Button I get the message below. And when I measure at **SBWTDIO (CH3)** and **SBWTCK (CH1)** at the MSP-FET430UIF I get the signals in the pictures below.



The cells are also connected like in the datasheet and when I push S1 I can measure that the TIDA-Board enters from ship mode to the normal mode. There are signals on the I2C Interface.