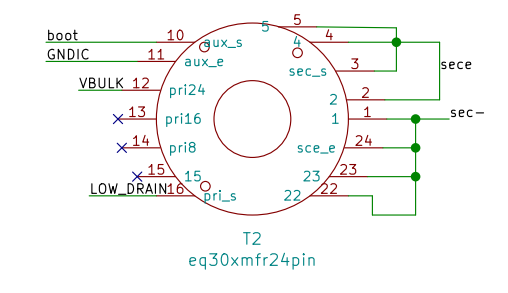
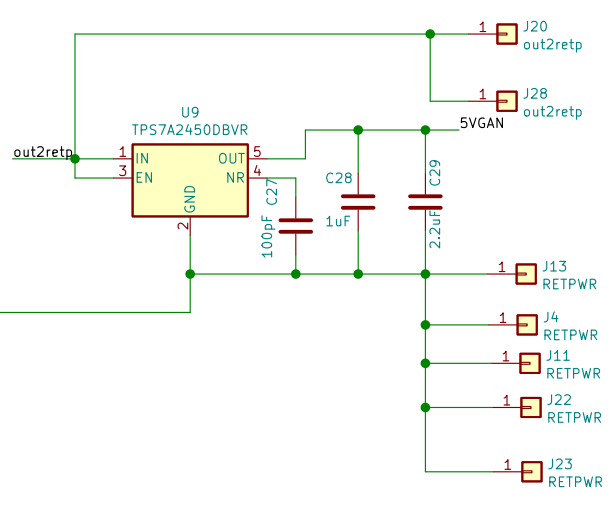
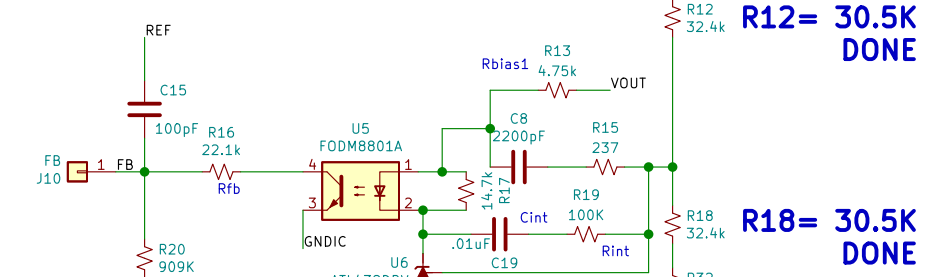


**BULK OUTPUT CAPS ON MAIN PCB**



**VCC & VDD cap values set upon testing**



**R12= 30.5K DONE**  
**R18= 30.5K DONE**

changed D1 to fast rec recovery  
SEPT 5, 2020  
ADDED 1 TURN TO AUX  
SEPT 5  
DO NOT USE ILS11 SINCE AUG30

AUG20, 2020 10PM, PROTO 1 CHANGES  
-boot on pri board need connectio to boot from xmfr  
-gnext on pri to vertical Aux via needs wired connection  
-bulk from pri to xmfr needs wired connect  
for start testing removed U4, D8  
ONLY FOR STARTUP SWS PIN RAMP TO17.5V VERIFICATION.  
ON STARTUP WITH pwm1 & vREF ON, GO BACK TO ORIG CKT SLOWLY ESTABLISHING WHAT EXACTLY CAUSED SWS PIN STUCK UP AT 5.4V

ADDED 330pF-390 now-AT CS  
SEPT 5

ADDED 24K TO 5V  
SEPT 5

ADD D8-19-9AM  
ADDED SEPT 5, 2020 22uF, 16v, for now

12VHISIDE