

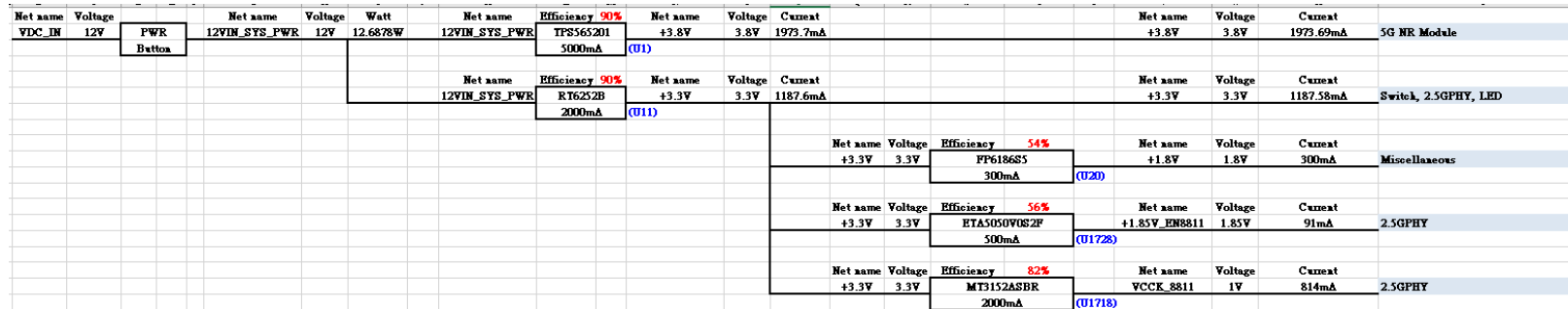
Arcadyan Technology Corporation 2013. All rights are reserved.
 The information contained herein is the exclusive property of Arcadyan and shall not be used, distributed, reproduced, or disclosed in whole or in part without prior written permission of Arcadyan. It thereof does not convey or imply any licenses under patent rights or other industrial or intellectual property rights.
 Arcadyan Confidential Information

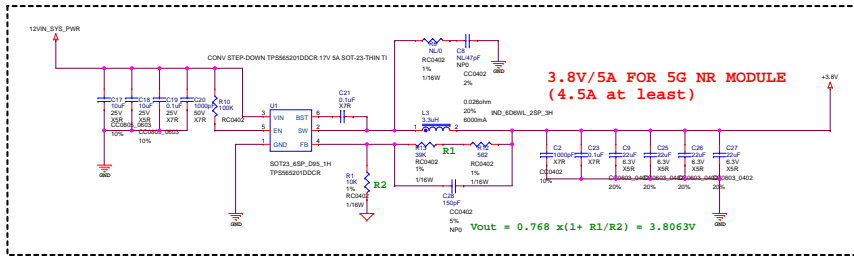
		Arcadyan Technology Corporation http://www.arcadyan.com	
Title Block Diagram		Model XCV4BE444M-TG	
Size B	Document Number 165000287600J	Drawn By Leon_Cheng	Rev ROA
Date:	Tuesday, July 16, 2024	Sheet	2 of 15

Power Consumption Table

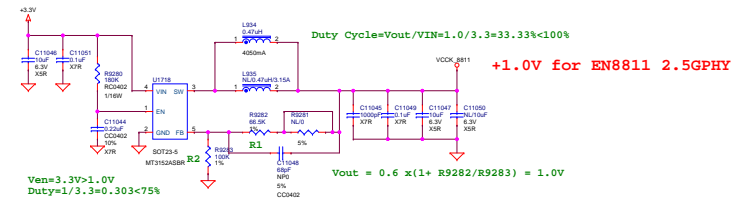
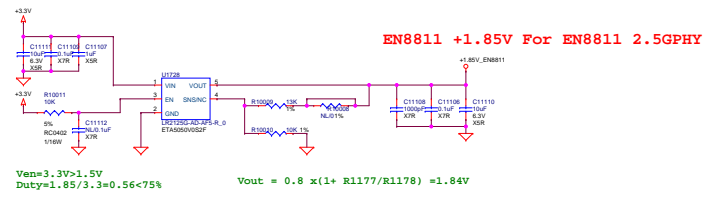
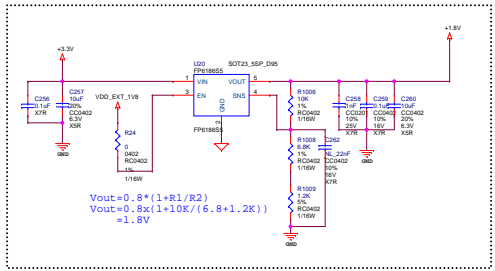
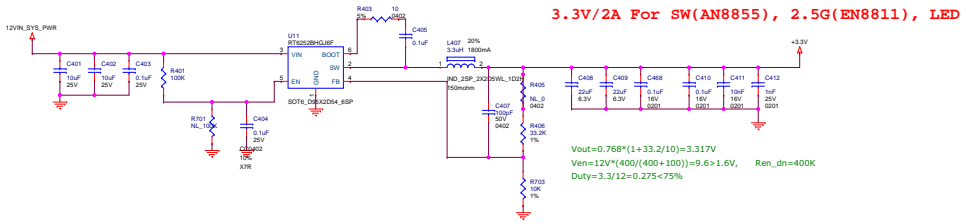
KEY Components	System & Module			PHY		RF				Unit	Total
	3.8V	3.3V	1.8V	1.85V	1V	3.3V	1.8V	1.2V	0.75V		
Digital											
RG620T-EH (5G Module)	1973.69									mA	7.500W
AN8855H (1G LAN Switch)		400								mA	1.320W
EN8811 (2.5G PHY)		55		91	814					mA	1.164W
LEDs		220								mA	0.726W
Miscellaneous			300							mA	0.540W
RF											
MT7992A (Kite)							195	194	1486	mA	1.698W
MT7975N (2.4G, 4X4, iFEM)						1099	658			mA	4.811W
MT7979 (5G, 4X4, iFEM)						1572	350			mA	5.818W
CC2652P1FRGZR (MCU, BT)						88				mA	0.290W
3.3V --> 1.8V		181.82								mA	
3.3V --> 1.85V		56.68								mA	
3.3V --> 1V		274.07								mA	
Total Current Consumption	1973.69	1187.58	300	91	814	2759	1203	194	1486	mA	
Efficiency	0.9	0.9				0.9	0.9	0.9	0.82		
Total Power Consumption	8.33	4.35				10.12	2.41	0.26	1.36	Watt	26.828W

Power Tree for baseband





+1.8V For Logic level (VDD_EXT or LDO) if 5G Module VDD_EXT ok -> LDO NL



SH_PWT
 Top frame for PWR 123700146400J
 Top cover for PWR

