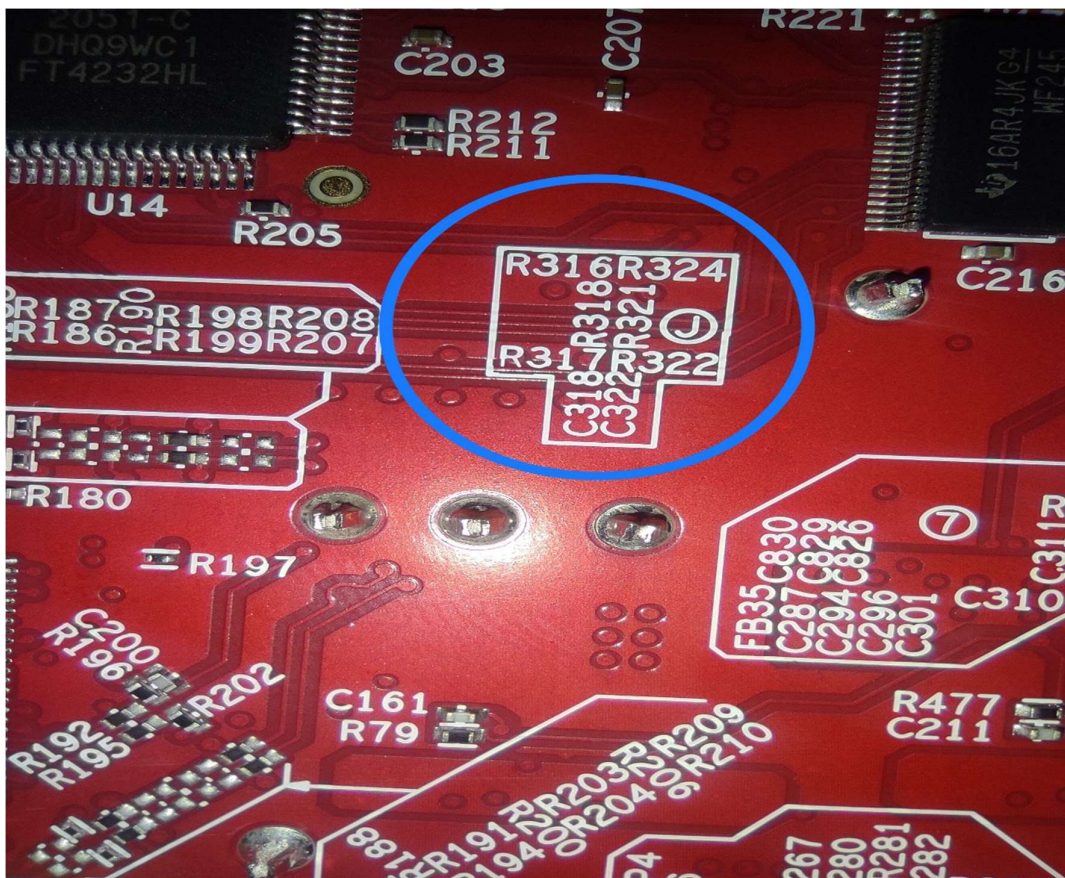
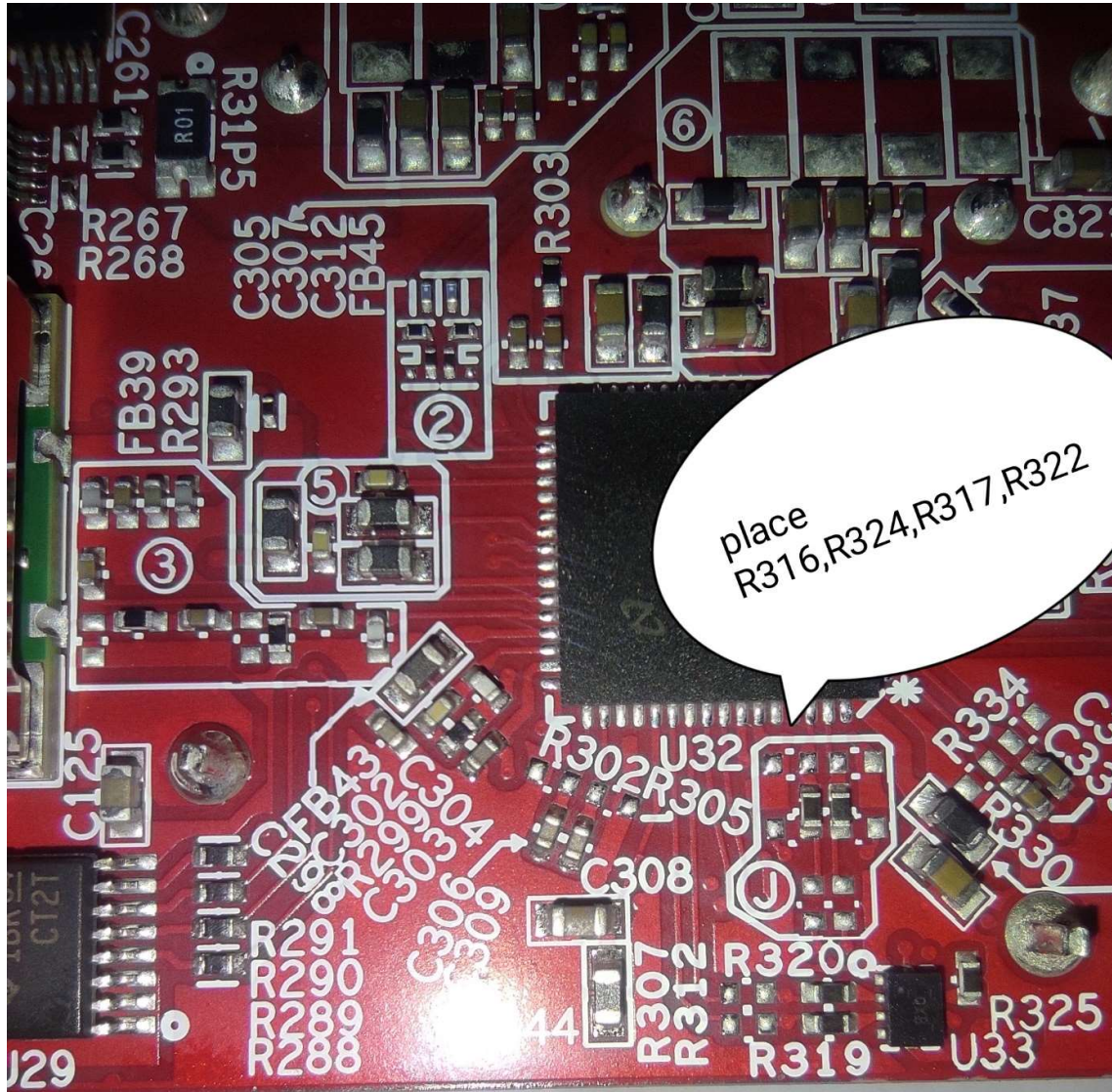


## TI board Rework

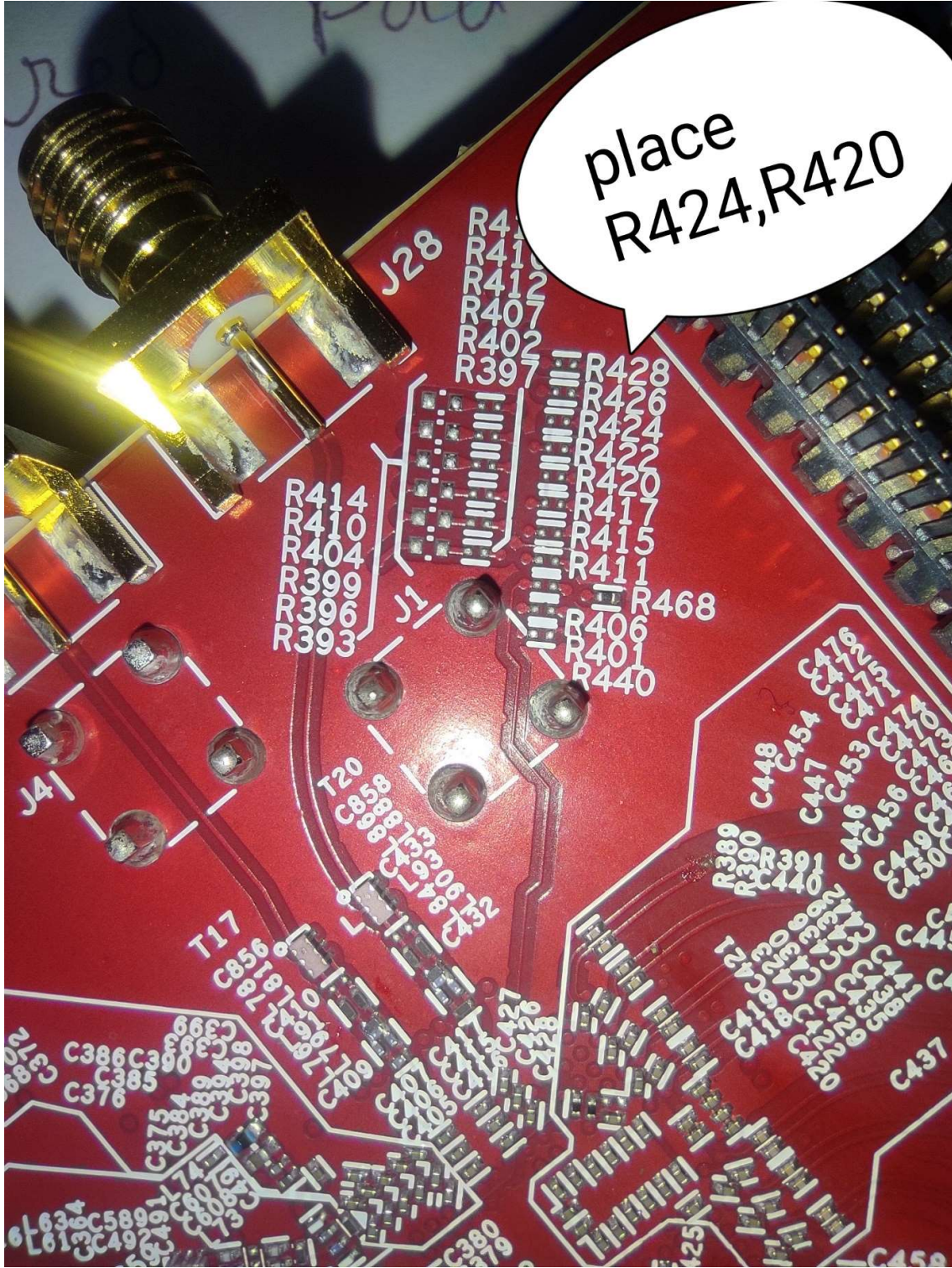
The details are as follows:

1. Populate R317,R322 with 0 ohm resistors (footprint is 0402 , 0E) - Shared pad as before
2. Populate R316,R324 with 240 ohm resistors (footprint is 0402, 240E)
3. Populate R424, R420, R408, R405 with 0 ohm resistors (footprint is 0201 , 0E)
4. Populate R76, R75, R74, R73 with 0 ohm resistors (footprint is 0402, 0E)
5. DNI (Remove) R232, R233, R234, R238 resistors (footprint is 0402 , 49.9 E)
6. DNI (Remove) R205, R211, R212 resistors to disconnect from USB FTDI chip (footprint is 0402 , 0E)
7. Populate R457, R458, R459, R460 with 0 ohm resistors (footprint is 0201, 0E)





place  
R316,R324,R317,R322



place  
R424, R420

J28

R411  
R412  
R407  
R402  
R397

R414  
R410  
R404  
R399  
R396  
R393

J1

R428  
R426  
R424  
R422  
R420  
R417  
R415  
R411  
R468  
R406  
R401  
R440

J4

T20

C858  
C859  
C860  
C861  
C862  
C863  
C864  
C865  
C866  
C867  
C868  
C869  
C870  
C871  
C872  
C873  
C874  
C875  
C876  
C877  
C878  
C879  
C880  
C881  
C882  
C883  
C884  
C885  
C886  
C887  
C888  
C889  
C890  
C891  
C892  
C893  
C894  
C895  
C896  
C897  
C898  
C899  
C900

T17

C856  
C857  
C858  
C859  
C860  
C861  
C862  
C863  
C864  
C865  
C866  
C867  
C868  
C869  
C870  
C871  
C872  
C873  
C874  
C875  
C876  
C877  
C878  
C879  
C880  
C881  
C882  
C883  
C884  
C885  
C886  
C887  
C888  
C889  
C890  
C891  
C892  
C893  
C894  
C895  
C896  
C897  
C898  
C899  
C900

R389  
R390  
R391  
R392  
R393  
R394  
R395  
R396  
R397  
R398  
R399  
R400  
R401  
R402  
R403  
R404  
R405  
R406  
R407  
R408  
R409  
R410  
R411  
R412  
R413  
R414  
R415  
R416  
R417  
R418  
R419  
R420  
R421  
R422  
R423  
R424  
R425  
R426  
R427  
R428  
R429  
R430  
R431  
R432  
R433  
R434  
R435  
R436  
R437  
R438  
R439  
R440  
R441  
R442  
R443  
R444  
R445  
R446  
R447  
R448  
R449  
R450  
R451  
R452  
R453  
R454  
R455  
R456  
R457  
R458  
R459  
R460  
R461  
R462  
R463  
R464  
R465  
R466  
R467  
R468  
R469  
R470  
R471  
R472  
R473  
R474  
R475  
R476  
R477  
R478  
R479  
R480

C376  
C385  
C386  
C375  
C384  
C389  
C391  
C397  
C398  
C399  
C390  
C392  
C393  
C394  
C395  
C396  
C397  
C398  
C399  
C400  
C401  
C402  
C403  
C404  
C405  
C406  
C407  
C408  
C409  
C410  
C411  
C412  
C413  
C414  
C415  
C416  
C417  
C418  
C419  
C420  
C421  
C422  
C423  
C424  
C425  
C426  
C427  
C428  
C429  
C430  
C431  
C432  
C433  
C434  
C435  
C436  
C437  
C438  
C439  
C440  
C441  
C442  
C443  
C444  
C445  
C446  
C447  
C448  
C449  
C450  
C451  
C452  
C453  
C454  
C455  
C456  
C457  
C458  
C459  
C460  
C461  
C462  
C463  
C464  
C465  
C466  
C467  
C468  
C469  
C470  
C471  
C472  
C473  
C474  
C475  
C476  
C477  
C478  
C479  
C480

C437



place  
R408, R405

DC183 AFE80  
4.9GHz  
PCB REV B

①  
20  
19  
18  
17  
16  
15  
14  
13  
12  
11  
10  
9  
8  
7  
6  
5

R436  
R435

place  
R457,R458,R459,R460

R1  
R457  
R458  
R459  
R460  
R453  
R454

C24  
L4  
L6  
C863  
C28  
L8  
L25  
C30  
C32  
L9  
L11  
L14  
C861  
R481  
C40  
CL20  
L4  
L21  
L24  
L24  
C48  
C44

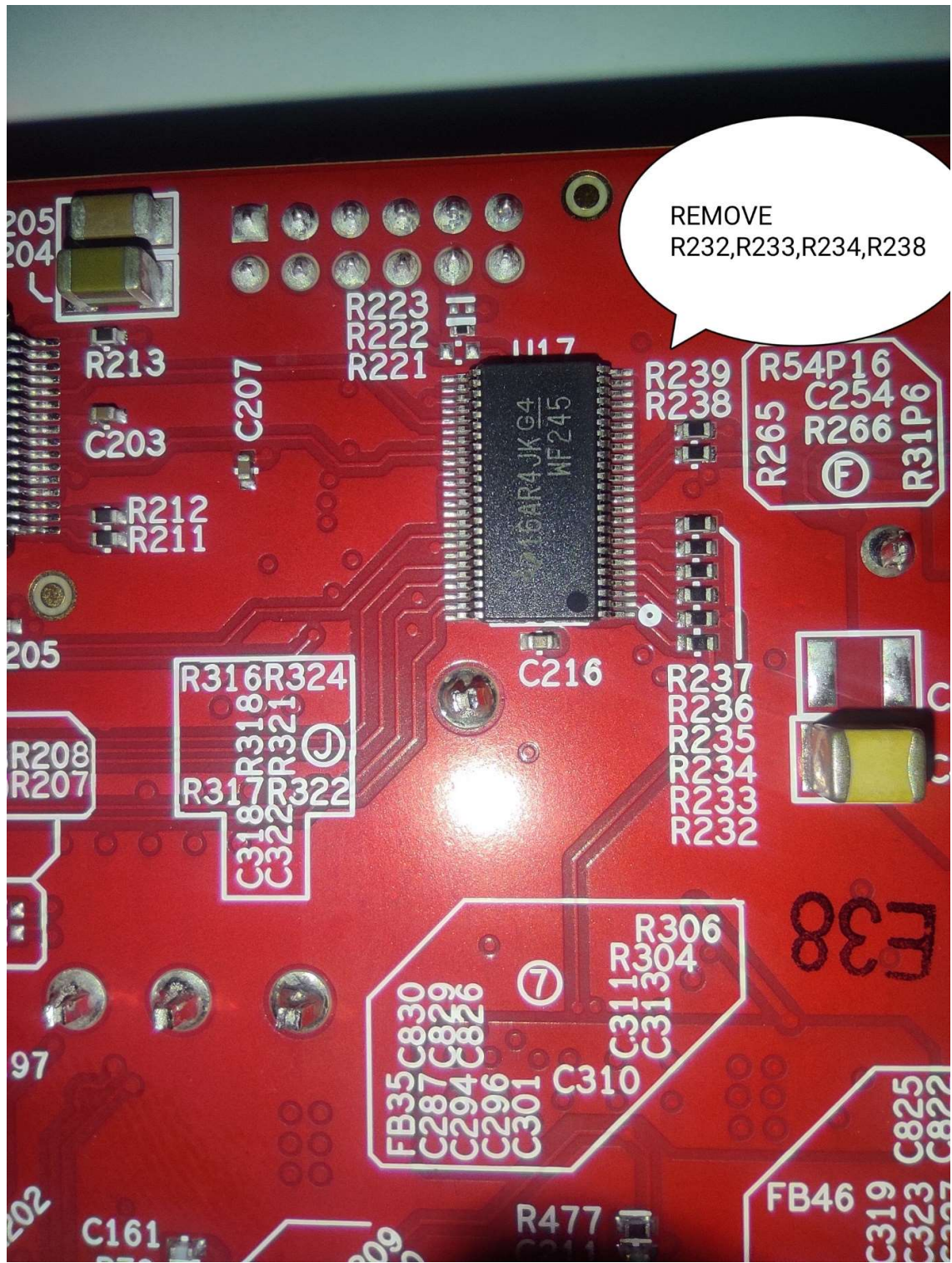
R452  
R456

RXH  
J2

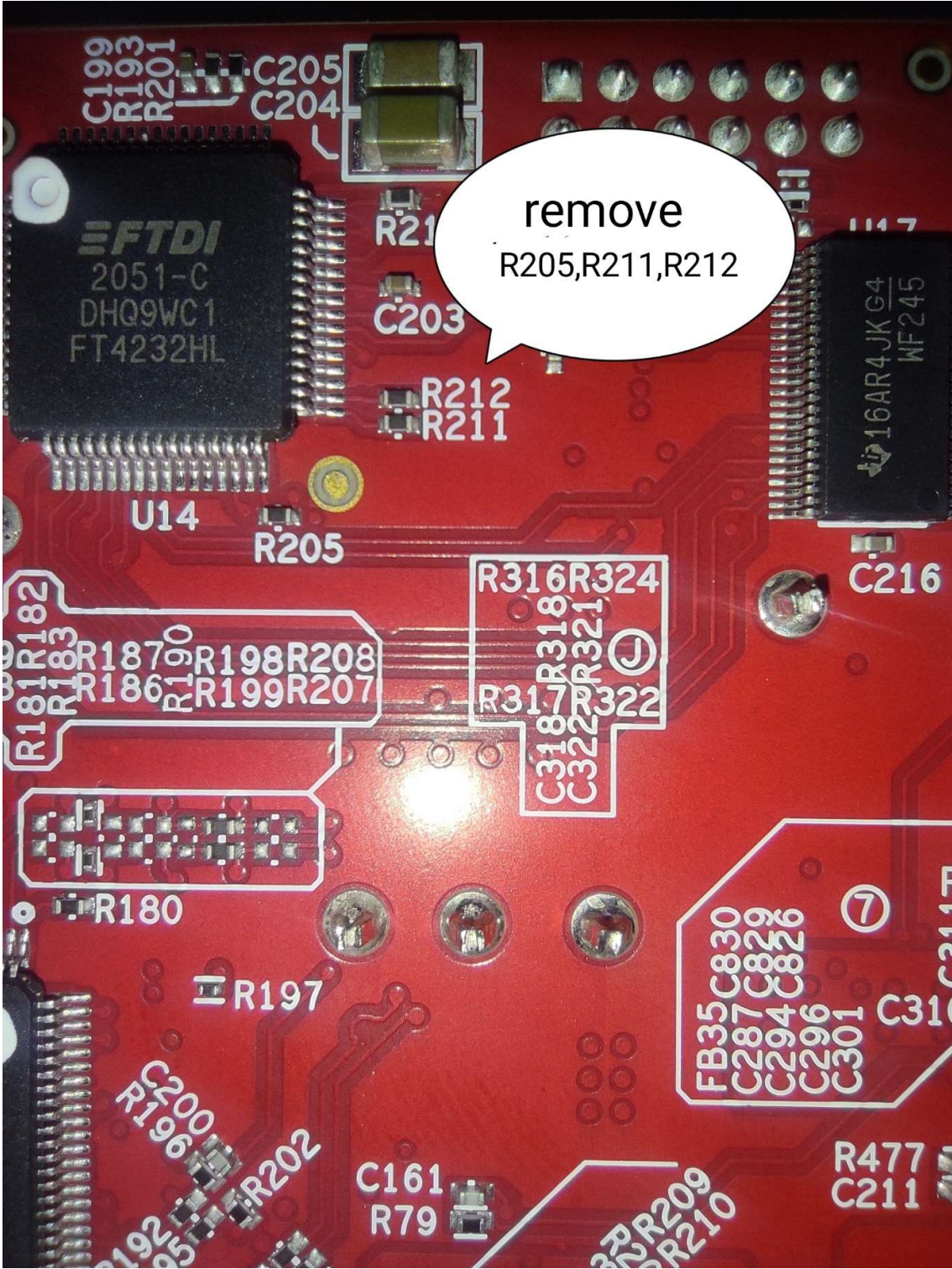
7303400007

R2  
C1  
C2

RX



REMOVE  
R232,R233,R234,R238



remove  
R205, R211, R212

C199  
C193  
R201

C205  
C204

**FTDI**  
2051-C  
DHQ9WC1  
FT4232HL

R211

C203

R212  
R211

U14

R205

U17

16AR4JK G4  
MF245

C216

R181 R182  
R183  
R186  
R187  
R190  
R198  
R199  
R207  
R208

R316 R324

R317 R318  
R321 R322  
C318 C322

R180

R197

FB35  
C287  
C294  
C296  
C301  
C310

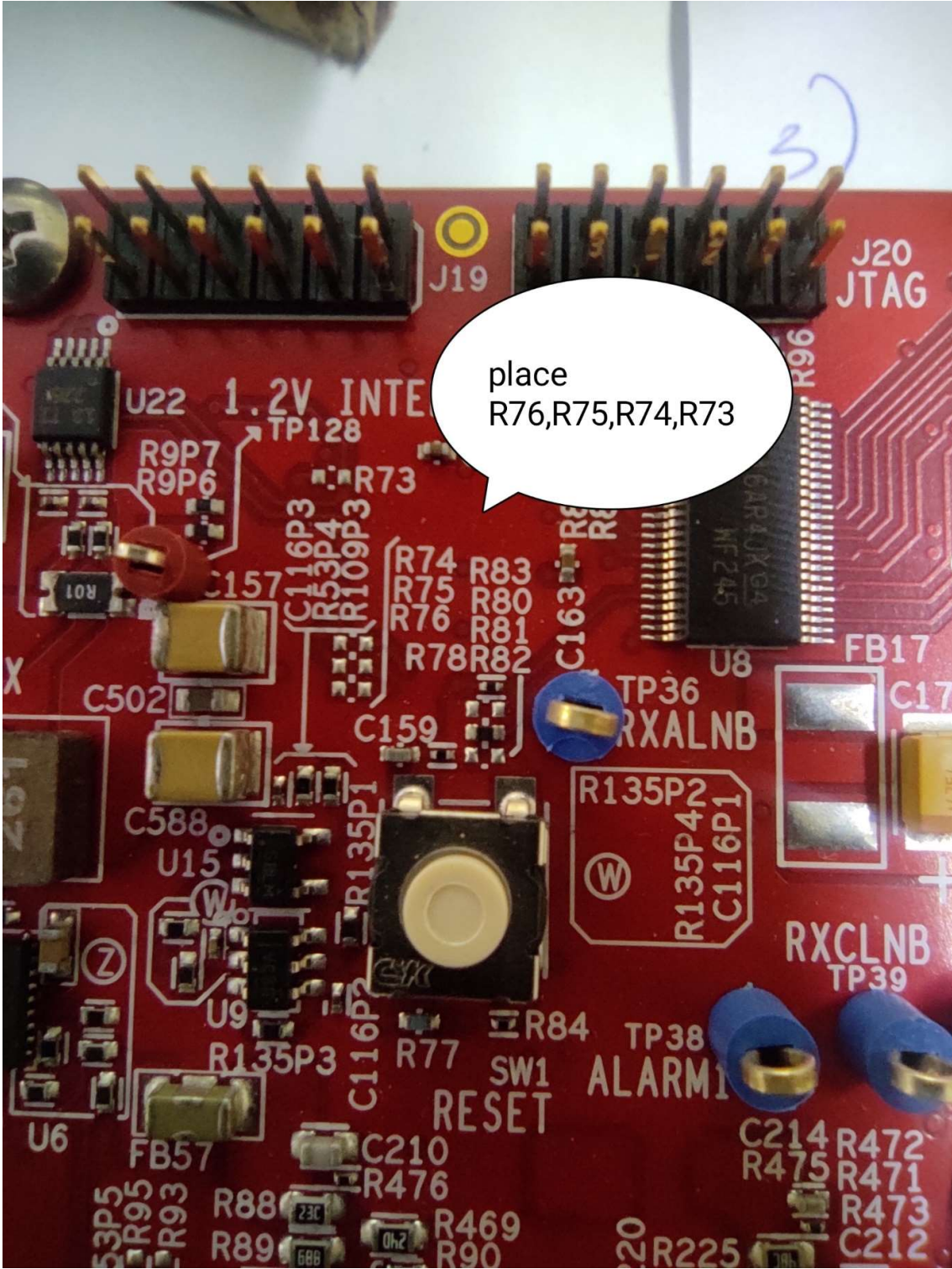
R190  
R192  
R195

R202

C161  
R79

R209  
R210

R477  
C211



place  
R76,R75,R74,R73