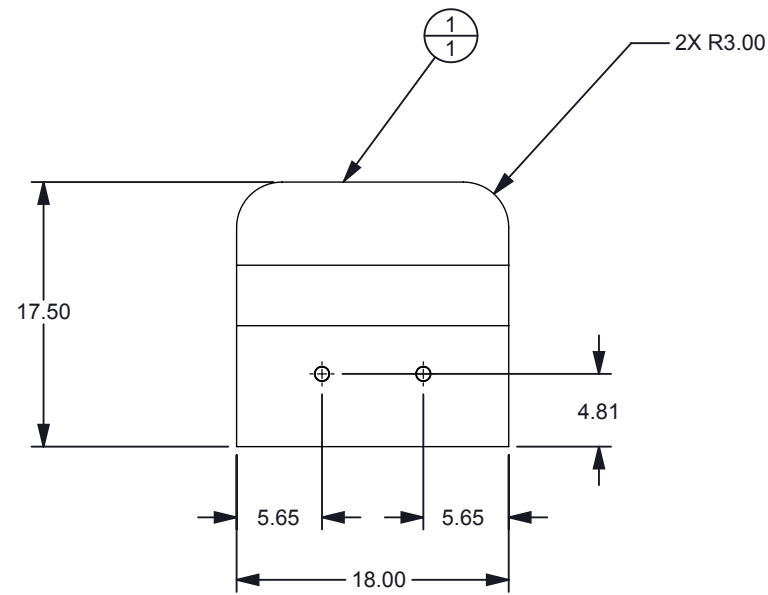


NOTES: UNLESS OTHERWISE SPECIFIED:

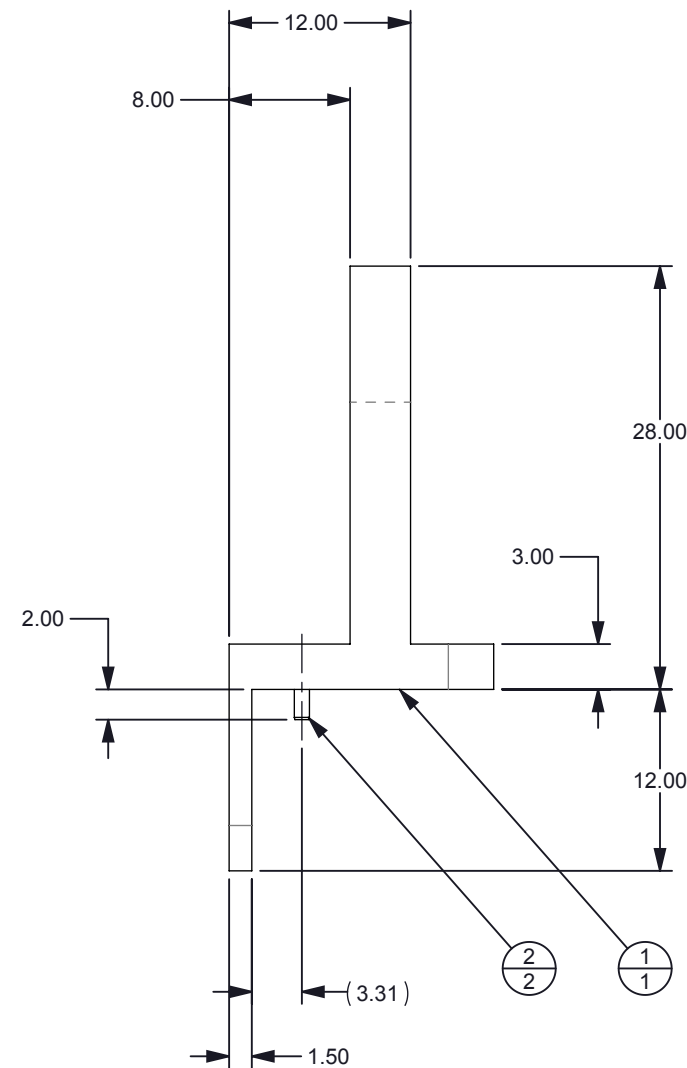
1. MATERIAL: 6061-T6 ALUMINUM
2. DEBURR AND REMOVE ALL SHARP EDGES.
3. FINISH: NONE

© COPYRIGHT 2014 TEXAS INSTRUMENTS
UNPUBLISHED, ALL RIGHTS RESERVED

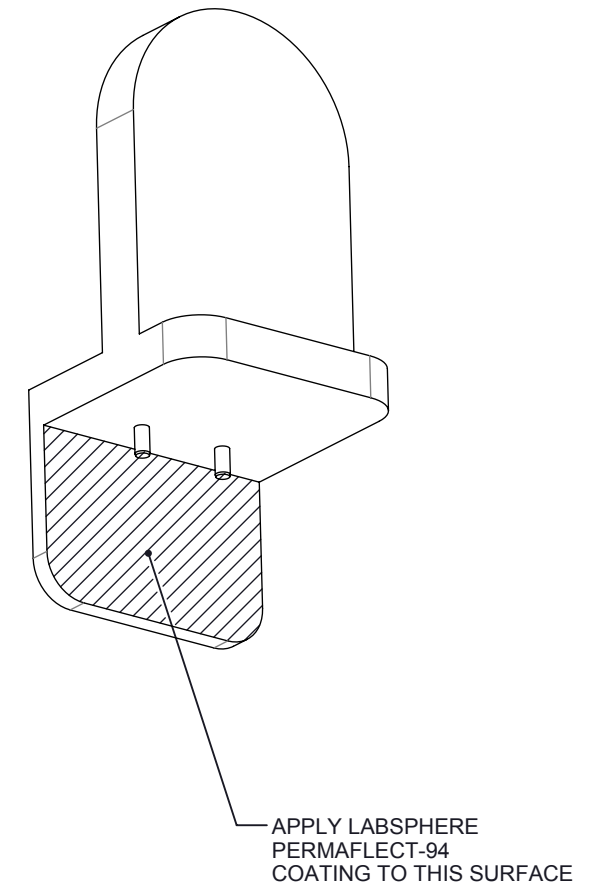
| REVISIONS | | | |
|-----------|-------------------------------------|-----------|-----|
| REV | DESCRIPTION | DATE | BY |
| A | RELEASE FOR PROTOTYPE | 6/4/2014 | RDR |
| B | DEVISED DOWEL PINS / DELETE 2 HOLES | 9/10/2014 | RDR |



PART FABRICATION



OPTICAL / SAMPLE COATING




| BILL OF MATERIAL | | | | | | |
|------------------|------|----------------|--------------------------------|---------------|------------|-----------------------|
| ITEM NO. | QTY. | TI PART NUMBER | DESCRIPTION | VENDOR | VENDOR P/N | MATERIAL |
| 1 | 1 | 2513941 | CALIBRATION SAMPLE HOLDER | MILLTECH | 2513941 | ALUMINUM 6061-T6 |
| 2 | 2 | 93600A030 | DOWEL PIN, 1.0DIA X 4.0 LG, SS | MCMaster-CARR | 93600A030 | TYPE 316 STAINLESS ST |

| | |
|-------------|---------|
| | |
| | |
| | |
| | |
| | |
| | |
| 25138673A | |
| NEXT ASSY | USED ON |
| APPLICATION | |

UNLESS OTHERWISE SPECIFIED

- DIMENSIONS ARE IN MILLIMETERS
- TOLERANCES: ANGLES $\pm 1^\circ$
2 PLACE DECIMALS ± 0.25
1 PLACE DECIMALS ± 0.50
- DIMENSIONAL LIMITS APPLY BEFORE PROCESSES
- INTERPRET DIMENSIONS IN ACCORDANCE WITH
ASME Y14.5M-1994
- REMOVE ALL BURRS AND SHARP EDGES
- PARENTHEThICAL INFO FOR REF ONLY

| | |
|--------|----------|
| DWN | DATE |
| R ROWE | 6/4/2014 |
| Engr | |
| CQE/QA | |
| CM | |
| | |
| Apprvd | |

| | | | |
|--|-----------------------|---------|----------|
|  TEXAS INSTRUMENTS | | | |
| CALIBRATION SAMPLE HOLDER ASSY NIRscan Nano | | | |
| SIZE B | DWG NO 2513941 | | REV B |
| SCALE 2:1 | | SHEET 1 | OF 1 |