

CUSTOMER TERMINAL	RoHS	LEAD(Pb)--FREE
Sn 96%, Ag 4%	Yes	Yes

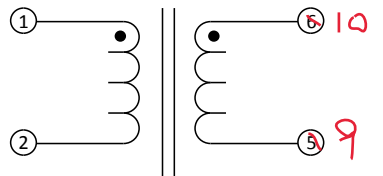
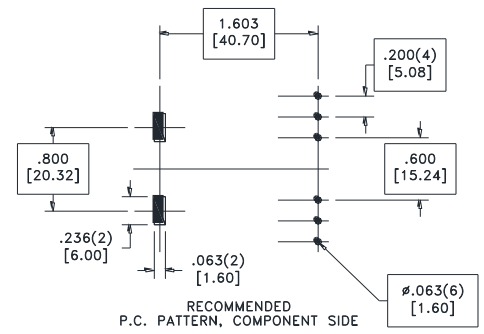
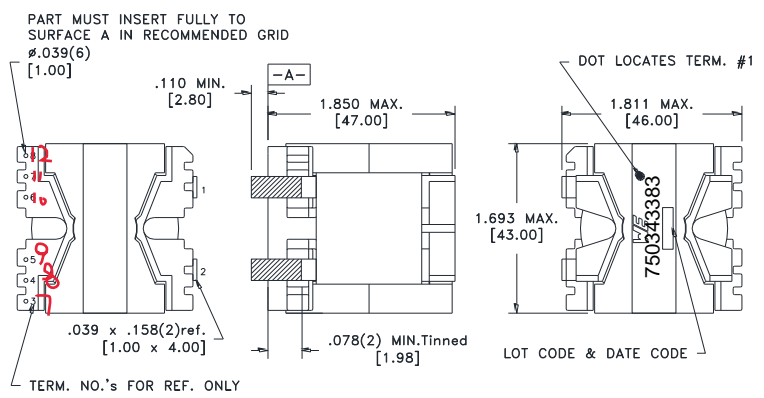
more than you expect



**ELECTRICAL SPECIFICATIONS @ 25° C unless otherwise noted:**

PARAMETER	TEST CONDITIONS	VALUE
D.C. RESISTANCE	1-2 @20°C	0.002 ohms max.
D.C. RESISTANCE	1-2 @20°C	0.125 ohms max.
INDUCTANCE	1-2 10kHz, 100mV, Ls	4.50µH ±10%
SATURATION CURRENT	1-2 20% rolloff from initial	70.0A
DIELECTRIC	1-2 1000VAC, 1 second	
URNS RATIO	(1-2):(6-5)	2 0.5:1, ±2%

(10-9):(1-2)



**GENERAL SPECIFICATIONS:**

OPERATING TEMPERATURE RANGE: -40°C to +125°C including temp rise.

Wire insulation & RoHS status not affected by wire color. Wire insulation color may vary depending on availability.

DFM	Packaging Specifications	 CONVENTION PLACEMENT	Tolerances unless otherwise specified:	DRAWING TITLE	PART NO.
DATE	Method: Tray		Angles: ±1° Decimals: ±.005 [.13]	<b>INDUCTOR</b>	<b>750343383</b>
ENG	PKG-TBD	Fractions: ±1/64 Footprint: ±.001 [.03]			
REV.	00		This drawing is dual dimensioned. Dimensions in brackets are in millimeters.		
DATE	2016-11-1	www.we-online.com/midcom			SPECIFICATION SHEET 1 OF 1