

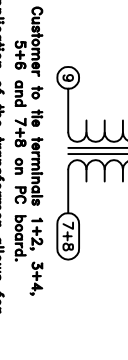
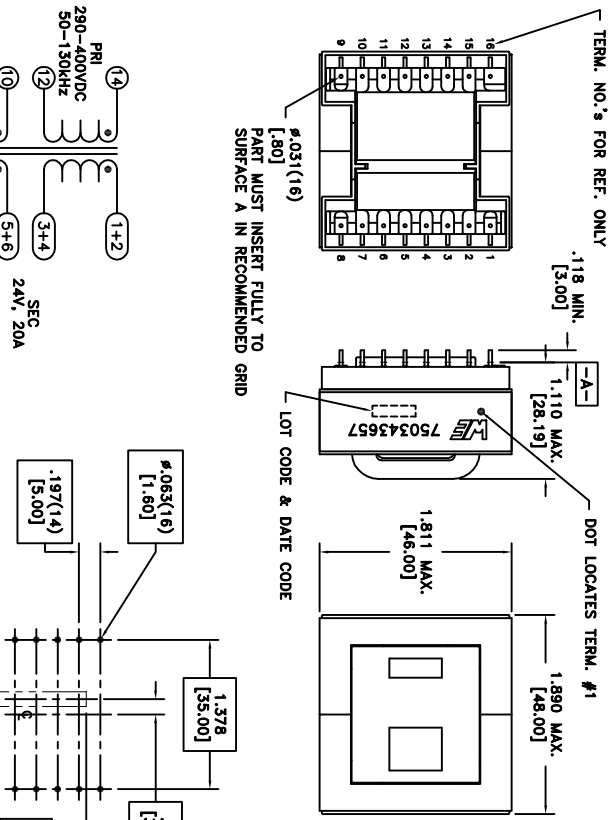
CUSTOMER TERMINAL	ROHS	LEAD(Pb)-FREE
Sn95%, Ag4%	Yes	Yes

more than you expect



ELECTRICAL SPECIFICATIONS @ 25°C unless otherwise noted:

PARAMETER	TEST CONDITIONS	VALUE
D.C. RESISTANCE	10-9 @20°C	0.115 ohms max.
D.C. RESISTANCE	1-3 tie(1+2, 3+4), @20°C	4 mOhms max.
D.C. RESISTANCE	5-7 tie(5+6, 7+8), @20°C	4 mOhms max.
D.C. RESISTANCE	14-12 @20°C	50 mOhms max.
INDUCTANCE	14-12 50kHz, 100mVAC, 1s	280.00uH ±10%
LEAKAGE INDUCTANCE	tie(1+2+3+4+5+6+7+8, 82kHz, 100mVAC, 1s	43uH ±10%
DIELECTRIC	tie(12+10, 3+4+5+6), 3750VAC, 1 second	-
TURNS RATIO	(14-12):(1+2-3+4)	8.33:1, ±2%
TURNS RATIO	(14-12):(5+6-7+8)	8.33:1, ±2%
TURNS RATIO	(14-12):(10-9)	12.5:1, ±2%



Customer to tie terminals 1+2, 3+4, 5+6 and 7+8 on PC board.
Application of the transformer allows for the leadwires between terminals 1&2, 3&4, 5&6 and 7&8 to solder bridge.



Wire insulation & RoHS status not affected by wire color.
Wire insulation color may vary depending on availability.

REV.	DATE	Packaging Specifications Method: Troy PKG-1047 www.we-online.com/midcom	Tolerances unless otherwise specified: Angles: ±1° Fractions: ±1/64 Decimals: ±.005 Footprint: ±.001 [.03]
02	04/20	CONVERSION ELEMENT	This drawing is dual dimensioned. Dimensions in brackets are in millimeters.
6A	6/18	SEE REVISION SHEET FOR REVISION LEVEL	

DRAWING TITLE	PART NO.
TRANSFORMER	750343657
e1Sos p/n: 750343657	SPECIFICATION SHEET 1 OF 1

