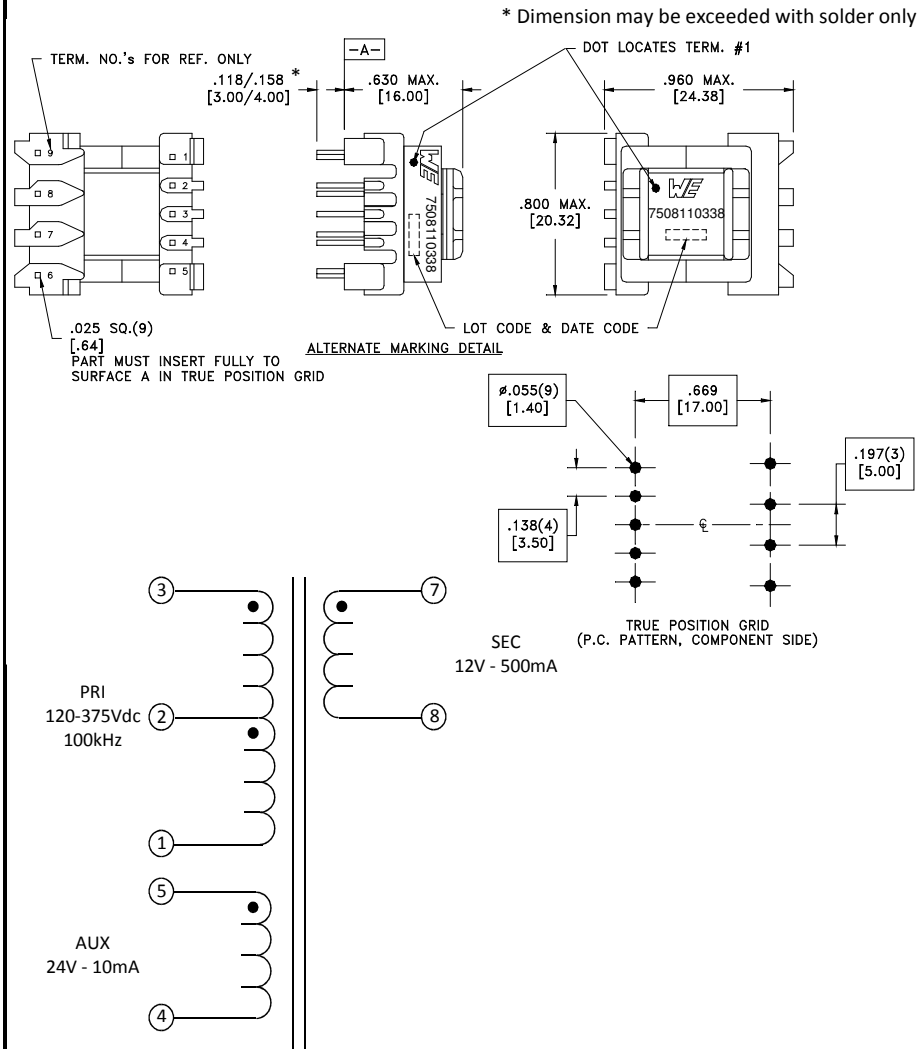


CUSTOMER TERMINAL	RoHS	LEAD(Pb)--FREE
Sn 96%, Ag 4%	Yes	Yes

more than you expect



**ELECTRICAL SPECIFICATIONS @ 25° C unless otherwise noted:**

PARAMETER	TEST CONDITIONS	VALUE
D.C. RESISTANCE	1-3 @20°C	1.76 ohms ±10%
D.C. RESISTANCE	4-5 @20°C	0.340 ohms ±10%
D.C. RESISTANCE	7-8 @20°C	0.050 ohms ±20%
INDUCTANCE	1-3 10kHz, 100mV, Ls	1.50mH ±10%
SATURATION CURRENT	1-3 20% rolloff from initial	325mA
LEAKAGE INDUCTANCE	1-3 tie(4+5, 7+8), 100kHz, 100mV, Ls	8μH typ., 13μH max.
DIELECTRIC	1-8 tie(3+4), 4000VAC, 1 second	4000VAC, 1 minute
DIELECTRIC	1-5 625VAC, 1 second	
URNS RATIO	(2-1):(3-2)	1:1, ±1%
URNS RATIO	(3-1):(5-4)	3.91:1, ±1%
URNS RATIO	(3-1):(7-8)	7.82:1, ±1%

**GENERAL SPECIFICATIONS:**

OPERATING TEMPERATURE RANGE: -40°C to +125°C including temp rise.

Designed to comply with the following requirements as defined by IEC61558-2-16, and EN61558-2-16:

- Reinforced insulation for a primary circuit at a working voltage of 265Vrms, 400Vpeak (operating frequency of <2MHz).

Wire insulation & RoHS status not affected by wire color. Wire insulation color may vary depending on availability.

DFM	SP	Packaging Specifications		Tolerances unless otherwise specified: Angles: ±1° Decimals: ±.005 [.13] Fractions: ±1/64 Footprint: ±.001 [.03]	DRAWING TITLE <b>TRANSFORMER</b>	PART NO. <b>7508110338</b>
DATE	9/16/2015	Method: Tray				
ENG	LJG	PKG-0735	This drawing is dual dimensioned. Dimensions in brackets are in millimeters.			
REV.	00					
DATE	9/22/2015	www.we-online.com/midcom	SPECIFICATION SHEET 1 OF 1			