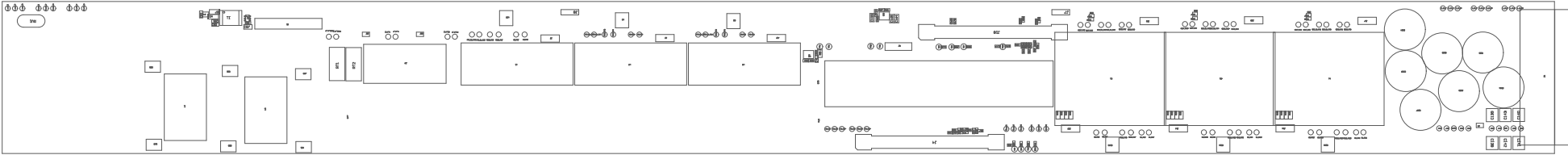
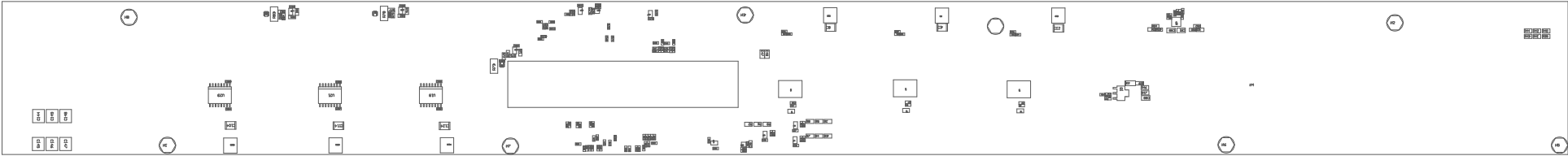


220 *Physical Label in millimeter box after 1000 units. Text shall be 6 pt font. Text shall be per the Label Table in the POP schematic.
221 *These assemblies are ESD sensitive, ESD precautions shall be observed.
222 *These assemblies may be clean and ESD Free but all components, pop of no clean flux is the exception.
223 *These assemblies must comply with requirements specified in IPC-A-610 Class 2, unless otherwise specified.



COMPONENTS MARKED "DNP" SHOULD NOT BE POPULATED.
ASSEMBLY VARIATION: 001

PCB VIEWED FROM TOP SIDE	BOARD #	POP23547	REV	ET	SUN REVs Not in version control
PLOT NAME = Top Assembly Drawing	GENERATED	10/26/2024	2:53:34 PM	TEXAS INSTRUMENTS	



COMPONENTS MARKED 'DNP' SHOULD NOT BE POPULATED.

ASSEMBLY UNITS/NTY 002

PCB VIEWED FROM BOTTOM SIDE	BOMID # 00020047	REV E1	SAN REVs Not In version control
PLOT NAME = Bottom Assembly Drawing	GENERATED 10/26/2024 2:53N 34 PM	TEXAS INSTRUMENTS	