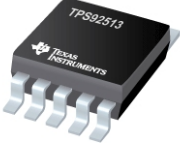


Please follow below steps to download TINA schematic using Sim export option.

Step-1:

Click on “Open Design” in Webench Panel.



DATASHEET
TPS92513 1.5A Buck LED Driver with Integrated Analog Current Adjust datasheet
[View now](#) [Download](#)

Description & parametricsTechnical documents**Tools & software**Order NowCompareQuality & packagingSupport & training

[Models](#) | [Design kits & evaluation modules](#) | [TI Designs & reference designs](#) | [Software](#) | [Development tools](#) | [TI design network](#)

Models (2)

Title	Category	Type	Size (KB)	Date	Views
Export TINA-TI Transient Spice Model from WEBENCH (Rev. A)	TINA-TI Spice Model	PDF	245 KB	06 Nov 2015	6,375 views
TPS92513 PSpice Transient Model	PSpice Model	ZIP	95 KB	26 May 2015	66 views

Design kits & evaluation modules (1)

Name	Part#	Type
------	-------	------

WEBENCH® Designer TPS92513

V in LowerV in Upper

4.5 ≤ 12.00 V ≤ 36.00 V ≤ 42.0

Ambient Temp30 °C ≤ 125°C

Light Output (optional) Lumens

Open Design**Simulate Now**

What are WEBENCH® tools?

It will open the following page

WEBENCH® Designer (Release Date: Thu Nov 9 09:27:04 2017, 1734052 bytes) - Windows Internet Explorer

My Designs/Projects

Feedback | 日本語 | 简体中文 | 繁體中文 | 한국어 | Русский Язык | Português | Deutsch | Welcome | saketkumar_g@ti.com

New Solutions Visualizer Help

ENTER REQUIREMENTS

Power

LED

LED Architect

Power Architect

FPGA/µP

HotSwap

Simple Switcher

Filters

Clocks

Load Switch

Interface

DDR Power

Sequencers

Battery Chargers

Amplifiers

Motor Drivers

Filter Your Results

Configure LED

Configure LED Array

Configure Power Source

Advanced Charting

Click On a Row Below To Select An LED

Update Y Axis: Flux

Update X Axis: Power

3600

3400

3200

3000

2800

2600

2400

2200

2000

1800

1600

1400

1200

1000

800

600

400

200

0

0

10

20

30

40

50

60

70

80

Next

Reset Plot

Click On a Row Below To Select An LED

Total: (619 of 619) parts. Click on a row below to select an LED:

Vendor	Family	Part#	Color	Image	Lum	Color	Lamb	Vf	Io	Flux	Angle	Powe	Rd	Price	FootPrint
Cree	Xlamp XHP50	XHP50A-00-00	cool wh...		139.13	6,500		11.50	0.70	1,120	120	8.05	13.81	\$4.24	0
Cree	Xlamp XHP50	XHP50A-00-00	white		139.13	6,800		11.50	0.70	1,120	120	8.05	13.81	\$4.48	0
Cree	Xlamp XHP50	XHP50A-00-00	cool wh...		139.13	6,500		11.50	0.70	1,120	120	8.05	13.81	\$4.14	0
Cree	Xlamp XHP50	XHP50A-00-00	cool wh...		139.13	7,800		11.50	0.70	1,120	120	8.05	13.81	\$4.48	0
Cree	Xlamp XHP50	XHP50A-00-00	cool wh...		139.13	6,500		11.50	0.70	1,120	120	8.05	13.81	\$4.29	0
Cree	Xlamp XHP50	XHP50A-00-00	cool wh...		139.13	7,800		11.50	0.70	1,120	120	8.05	21.48	\$4.40	0
Cree	Xlamp XHP50	XHP50A-00-00	white		139.13	6,800		11.50	0.70	1,120	120	8.05	13.81	\$4.40	0
Cree	Xlamp XHP50	XHP50A-00-00	white		139.13	5,700		11.50	0.70	1,120	120	8.05	13.81	\$4.29	0
Cree	Xlamp XHP50	XHP50A-00-00	cool wh...		139.13	6,500		11.50	0.70	1,120	120	8.05	13.81	\$4.67	0
Cree	Xlamp XHP50	XHP50A-00-00	white		139.13	5,700		11.50	0.70	1,120	120	8.05	13.81	\$4.61	0
Cree	XLamp® XP	XPGWHT-L-1-0	cool wh...		132.38	6,650		3.00	0.35	139.0	125	1.05	0.41	\$1.32	20
Cree	Xlamp XHP50	XHP50A-00-00	white		129.15	6,800		11.50	0.70	1,040	120	8.05	13.81	\$3.35	0
Cree	Xlamp XHP50	XHP50A-00-00	cool wh...		129.15	7,800		11.50	0.70	1,040	120	8.05	13.81	\$3.08	0
Cree	Xlamp XHP50	XHP50A-00-00	white		129.15	5,800		11.50	0.70	1,040	120	8.05	13.81	\$3.88	0
Cree	Xlamp XHP50	XHP50A-00-00	cool wh...		129.15	6,500		11.50	0.70	1,040	120	8.05	13.81	\$3.29	0

Step-2:

Tick on “Custom LED” under “Configure LED” tab and then Click on “Next”.

WEBENCH® Designer (Release Date: Thu Nov 9 09:27:04 2017, 1734052 bytes) - Windows Internet Explorer

My Designs/Projects

English | 日本語 | 简体中文 | 繁體中文 | 한국어 | Русский язык | Português | Deutsch | Welcome saketkumar_g@ti.com

New Solutions Visualizer Help

ENTER REQUIREMENTS

Power LED LED Architect Power Architect FPGA/µP HotSwap Simple Switcher Filters Clocks Load Switch Interface DDR Power Sequencers Battery Chargers Amplifiers Motor Drivers

Filter Your Results

Manufacturer: 3M

Color: All

Io(→): All | 0 >2

Lumi. Flux(>=): All | 0 600

FootPrint(<=): All | 0 500

Configure LED

LED Operating Current: 0.35 A

Part #: Custom

Vforward: 3.5 V

Rdynamic: 0.8 Ω

Or Use Custom LED: ☒

Configure LED Array

Series: 1 Vload: 3.5 V

Parallel: 1 Iload: 0.35 A

Configure Power Source

DC AC

Vin Min 12 V Max: 36 V

Amb. Temp: 30 (°C)

Reset All Next

Advanced Charting

Update Y Axis: Flux

Update X Axis: Power

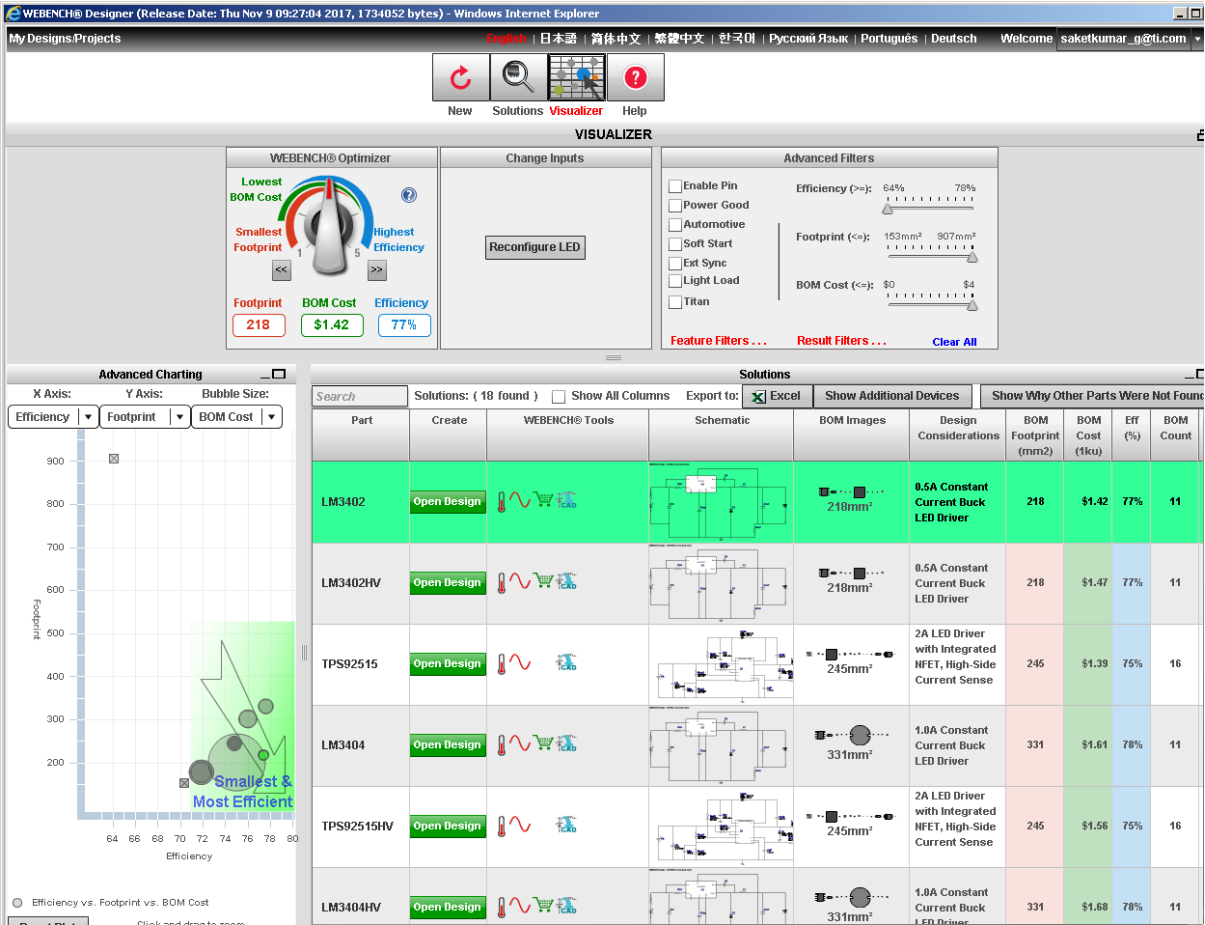
Click On a Row Below To Select An LED

Click On a Row Below To Select An LED

Total: (619 of 619) parts. Click on a row below to select an LED:

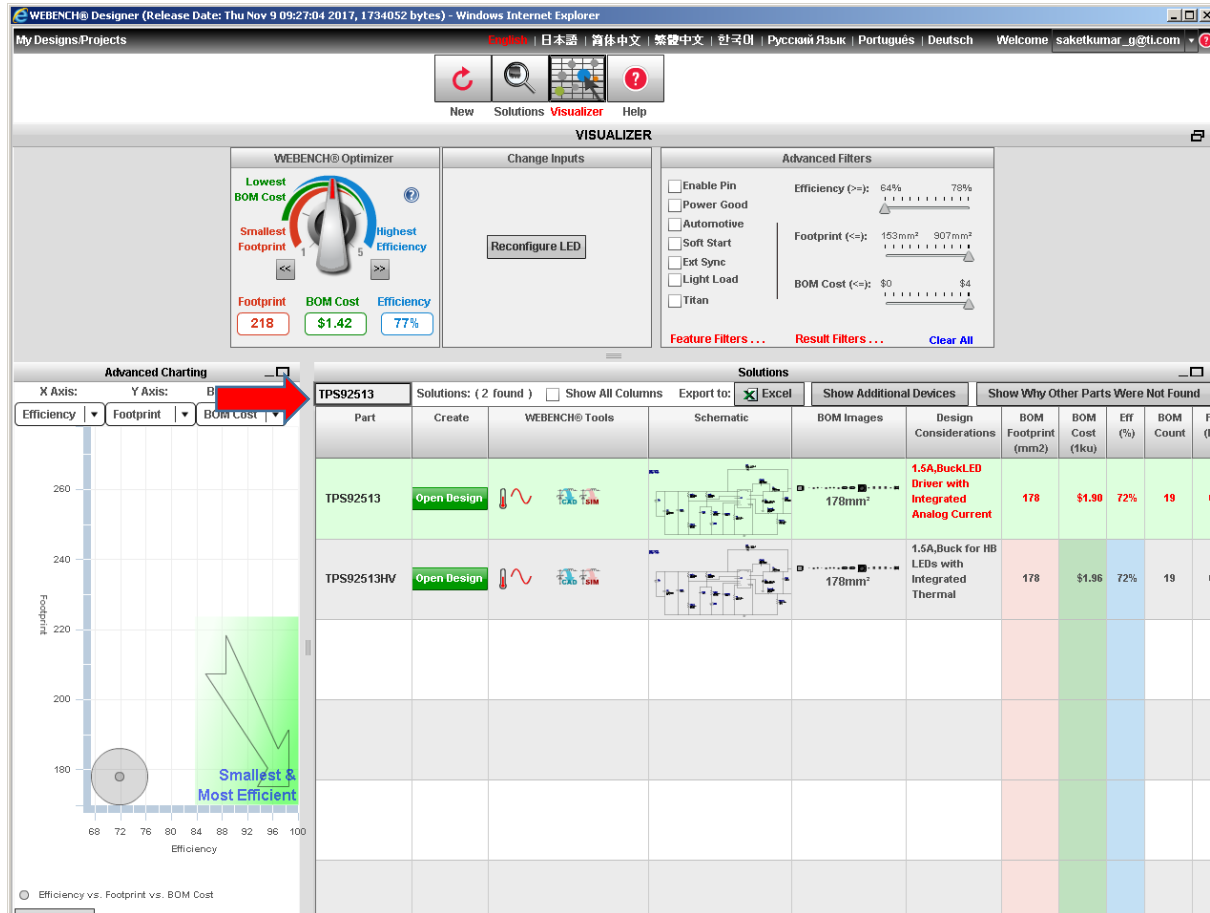
Vendor	Family	Part#	Color	Image	Lux	Color	Lamb	Vf	Io	Flux	Angle	Powe	Rd	Price	FootPrint
Cree	Xlamp XHP50	XHP50A-00-00	cool wh...		139.13	6,500		11.50	0.70	1,120	120	8.05	13.81	\$4.24	0
Cree	Xlamp XHP50	XHP50A-00-00	white		139.13	6,000		11.50	0.70	1,120	120	8.05	13.81	\$4.48	0
Cree	Xlamp XHP50	XHP50A-00-00	cool wh...		139.13	6,500		11.50	0.70	1,120	120	8.05	13.81	\$4.14	0
Cree	Xlamp XHP50	XHP50A-00-00	cool wh...		139.13	7,000		11.50	0.70	1,120	120	8.05	13.81	\$4.48	0
Cree	Xlamp XHP50	XHP50A-00-00	cool wh...		139.13	6,500		11.50	0.70	1,120	120	8.05	13.81	\$4.27	0
Cree	Xlamp XHP50	XHP50A-00-00	cool wh...		139.13	7,000		11.50	0.70	1,120	120	8.05	21.48	\$4.40	0
Cree	Xlamp XHP50	XHP50A-00-00	white		139.13	6,000		11.50	0.70	1,120	120	8.05	13.81	\$4.40	0
Cree	Xlamp XHP50	XHP50A-00-00	white		139.13	5,700		11.50	0.70	1,120	120	8.05	13.81	\$4.29	0
Cree	Xlamp XHP50	XHP50A-00-00	cool wh...		139.13	6,500		11.50	0.70	1,120	120	8.05	13.81	\$4.67	0
Cree	Xlamp XHP50	XHP50A-00-00	white		139.13	5,700		11.50	0.70	1,120	120	8.05	13.81	\$4.61	0
Cree	XLamp® XP	XPGWHIT-L-1-0	cool wh...		132.36	6,650		3.00	0.35	139.0	125	1.05	0.41	\$1.32	20
Cree	Xlamp XHP50	XHP50A-00-00	white		129.19	6,000		11.50	0.70	1,040	120	8.05	13.81	\$3.35	0
Cree	Xlamp XHP50	XHP50A-00-00	cool wh...		129.19	7,000		11.50	0.70	1,040	120	8.05	13.81	\$3.08	0
Cree	Xlamp XHP50	XHP50A-00-00	white		129.19	5,000		11.50	0.70	1,040	120	8.05	13.81	\$3.88	0
Cree	Xlamp XHP50	XHP50A-00-00	cool wh...		129.19	6,500		11.50	0.70	1,040	120	8.05	13.81	\$3.29	0

It will open the following window.



Step-3:

Type “TPS92513” in search box and then Click on “Open Design”.



Step-4

Click on “Sim Export” button on following page

The screenshot shows the WEBENCH® Designer interface. The top toolbar contains buttons for Back, New, Solutions, Visualizer, BOM, Charts, Schematic, Optimize, Op Vals, Sim, Thermal, Build-It Lite, Export, **Sim Export** (highlighted with a red arrow), Print, Share Design, and Help. The main workspace is divided into several panels: Optimization Tuning (Left), Charts (Top Center), Schematic (Center), WebTHERM™ Simulation (Right), Operating Values (Bottom Left), Bill of Materials (Bottom Center), and Your Complete Design (Bottom Right). The Optimization Tuning panel shows a graph of Efficiency (%) vs. Input Voltage (V) and a table of design parameters. The Schematic panel shows a circuit diagram. The Bill of Materials panel shows a table of components. The Your Complete Design panel shows a list of design files and a download button.

Step-5

Select “TINA-TI” radio button and click on “Export “ to download the TINA schematic.

The screenshot shows the WEBENCH® Export Simulation Export dialog box. The dialog has a title bar "WEBENCH® Export" and a close button. The main area is titled "Simulation Export" and contains a list of radio buttons: Altium Designer, **Tina-TI** (selected with a red arrow), and another unselected option. Below the radio buttons, there is a text box with the instruction: "Download and install [Tina-TI](#) to open the exported design in Tina-TI." At the bottom of the dialog, there are two buttons: **Export** (highlighted with a red arrow) and Cancel.