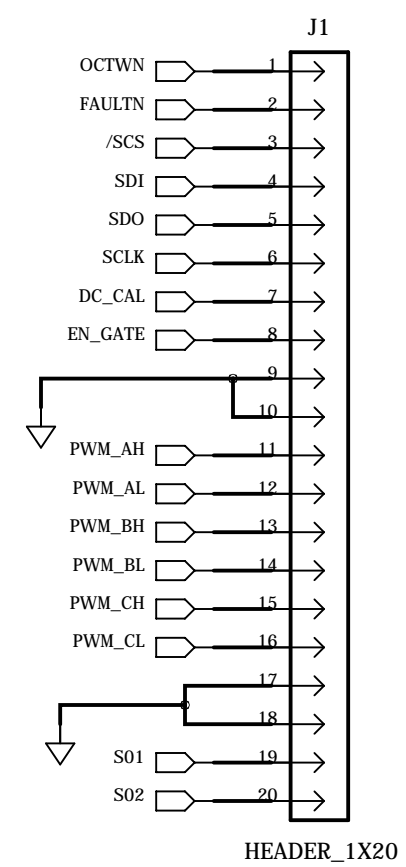
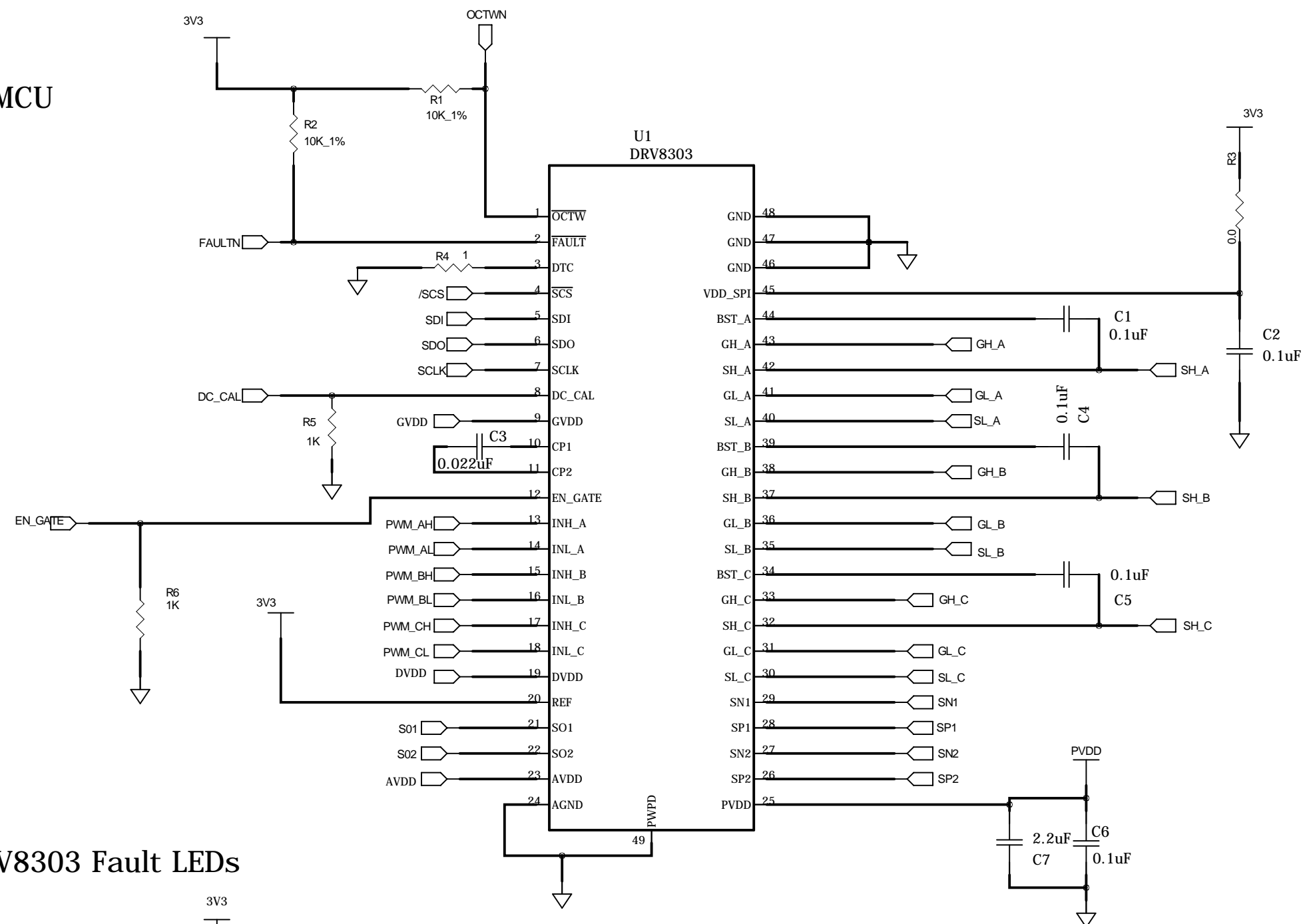
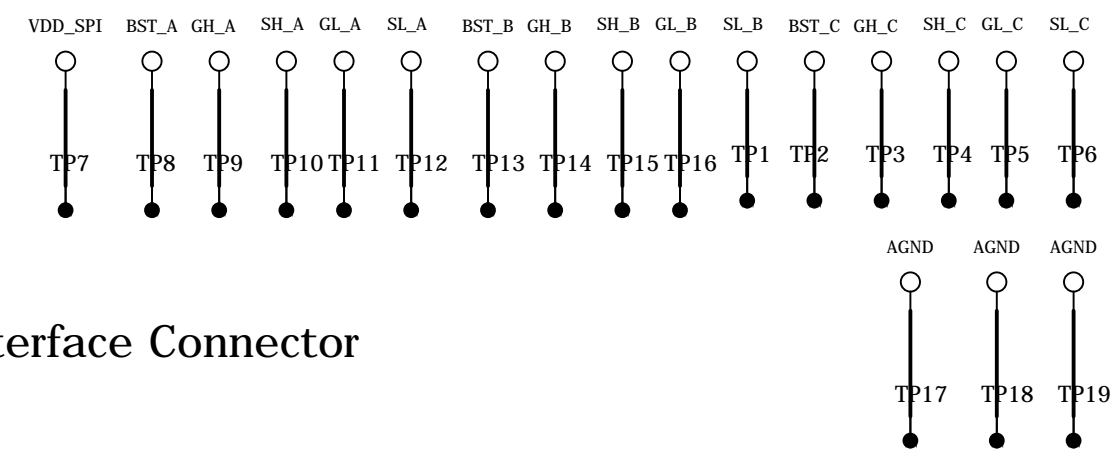


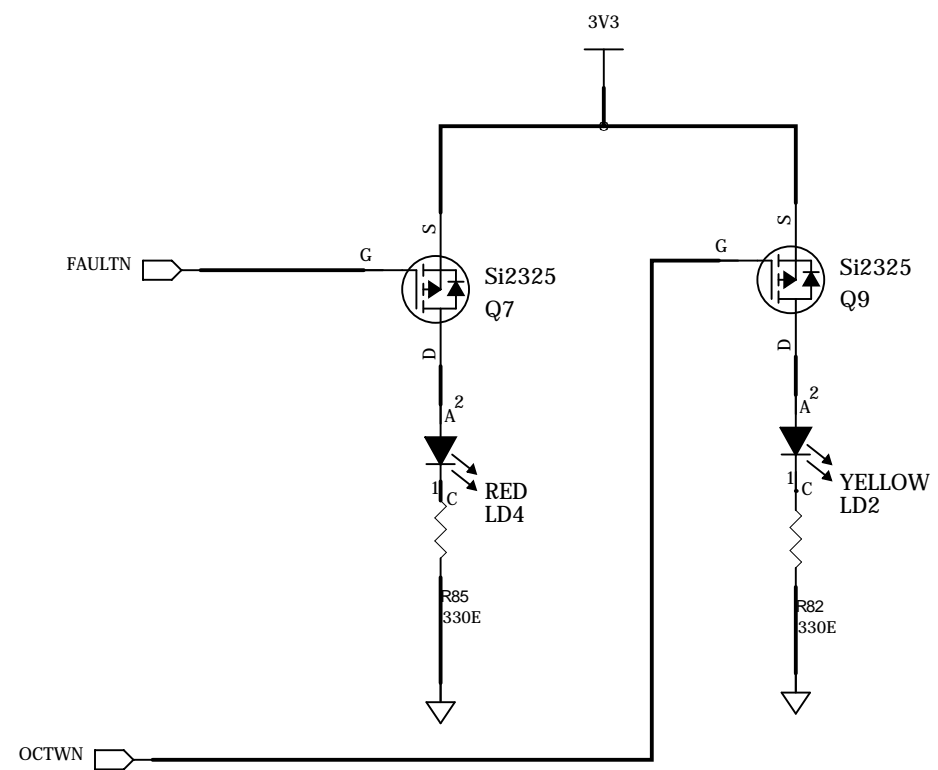
DRV8303 Interface for External MCU



DRV8303 Test Points & Interface Connector



DRV8303 Fault LEDs

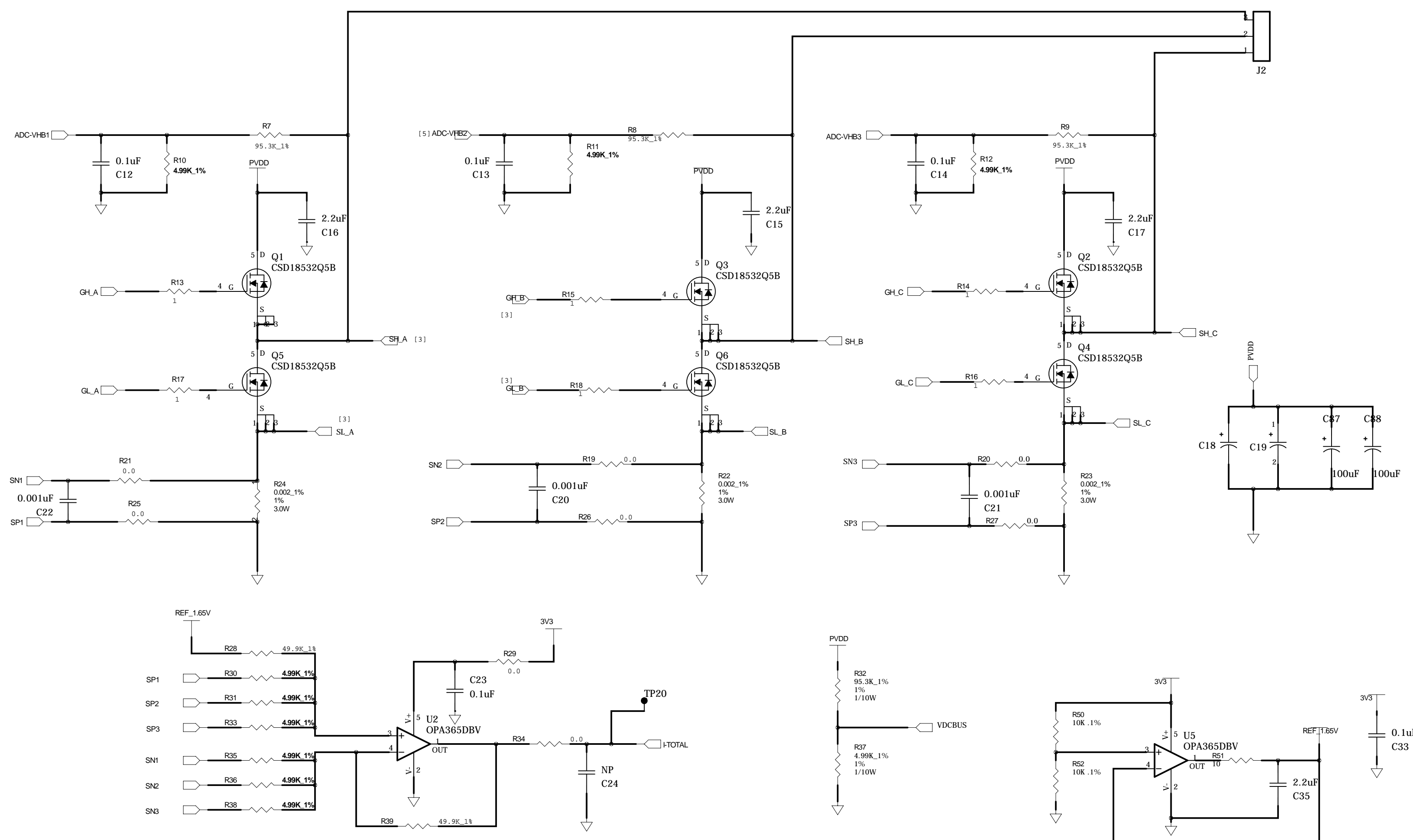


Texas Instruments, India

Title DRV8303EVM		
Size C	Number DRV8303EVM	Rev A
Date 08/2/2010	Drawn by <Name>	
Engineer Milan Rajne	Filename DRV8303EVM-Ver.B.sch	Sheet 1 of 5

3-Phase Inverter Plus Low Side Sense

Motor Input Connector



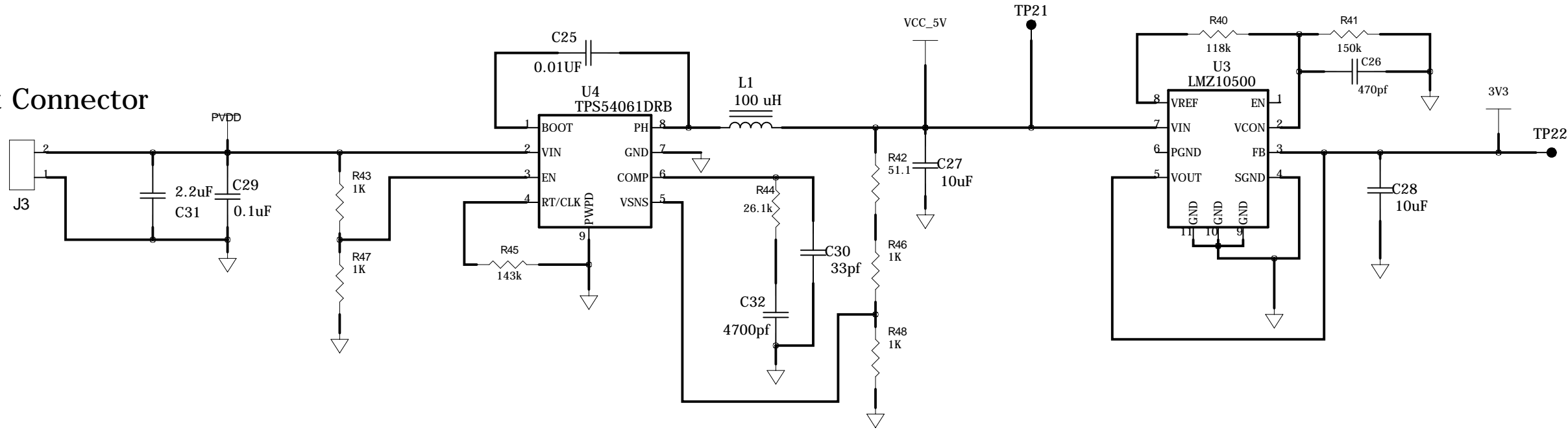
Kelvin connections used on all current sense resistors

Texas Instruments, India

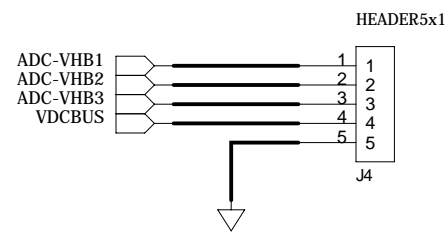
Title		DRV8303EVM	
Size	Number	Rev	
C	DRV8303EVM	A	
Date	08/2/2010	Drawn by	<Name>
Engineer	Milan Rajne	Filename	DRV8303EVM-Ver.B.sch
		Sheet	2 of 5

Control Power Supply: 5V and 3.3V

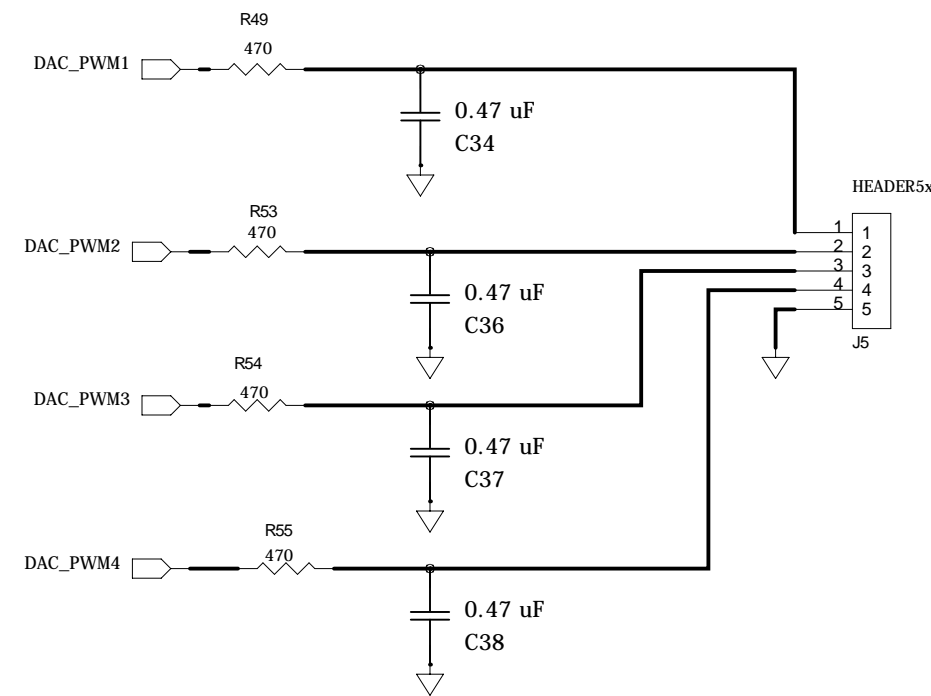
Input Connector



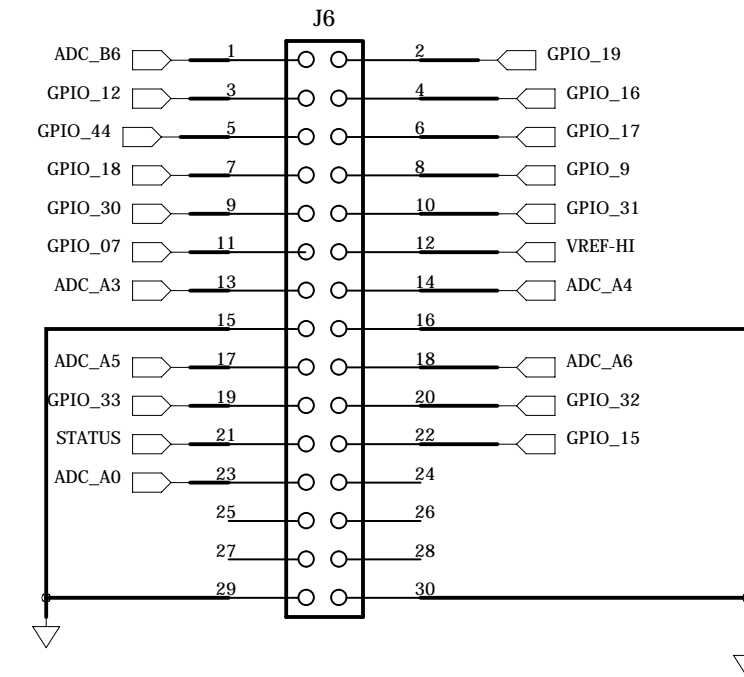
Back_emf and Vdc ADC-Connector



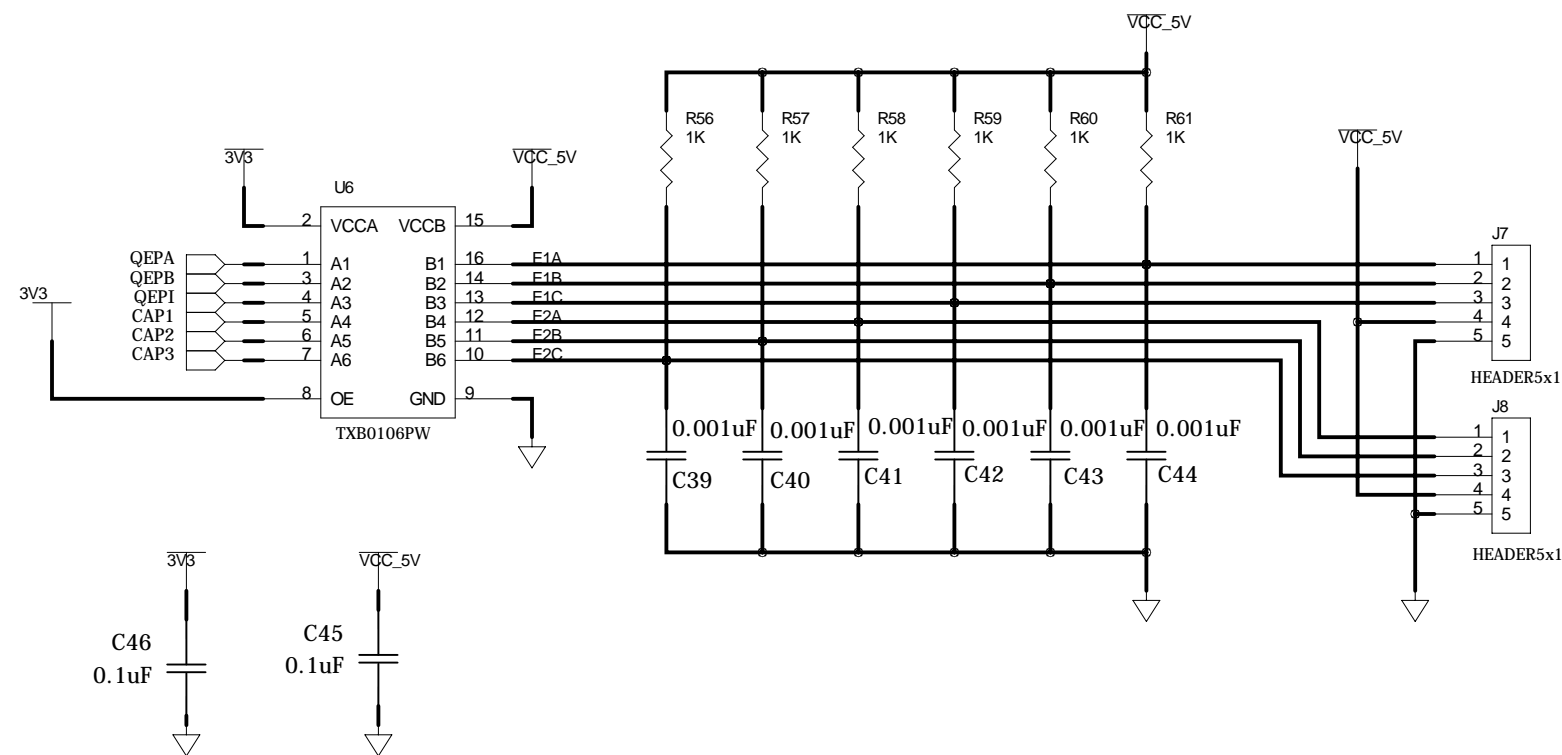
PWM_DAC_CONNECTOR



Control Signal Interface for unused Micro-controller Pins



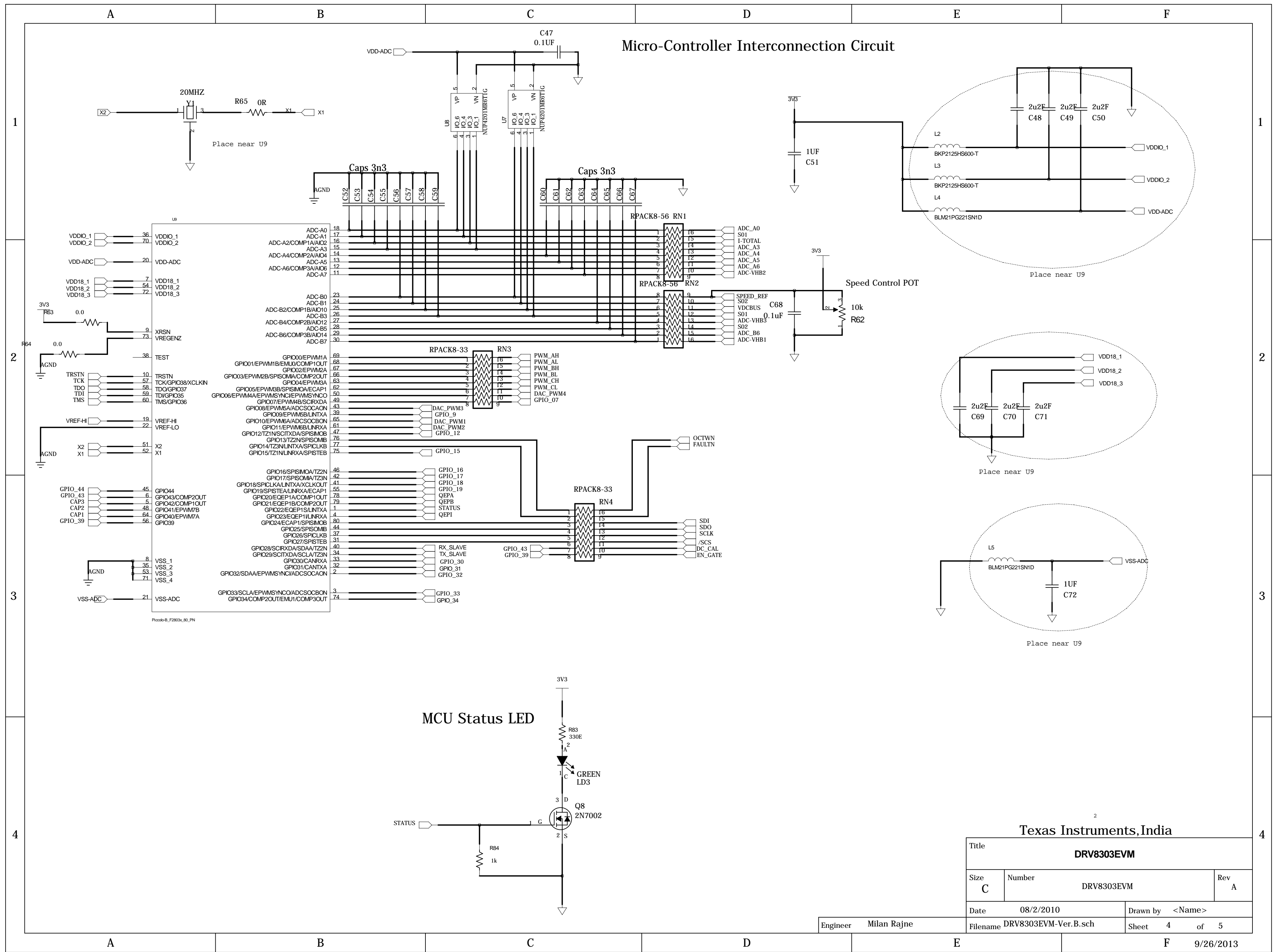
HALL EFFECT & ENCODER Sensor Interface



Texas Instruments, India

Title			DRV8303EVM		
Size	Number	Rev			
C	DRV8303EVM	A			
Date	08/2/2010	Drawn by			<Name>
Engineer	Milan Rajne	Filename	DRV8303EVM-Ver.B.sch	Sheet	3 of 5

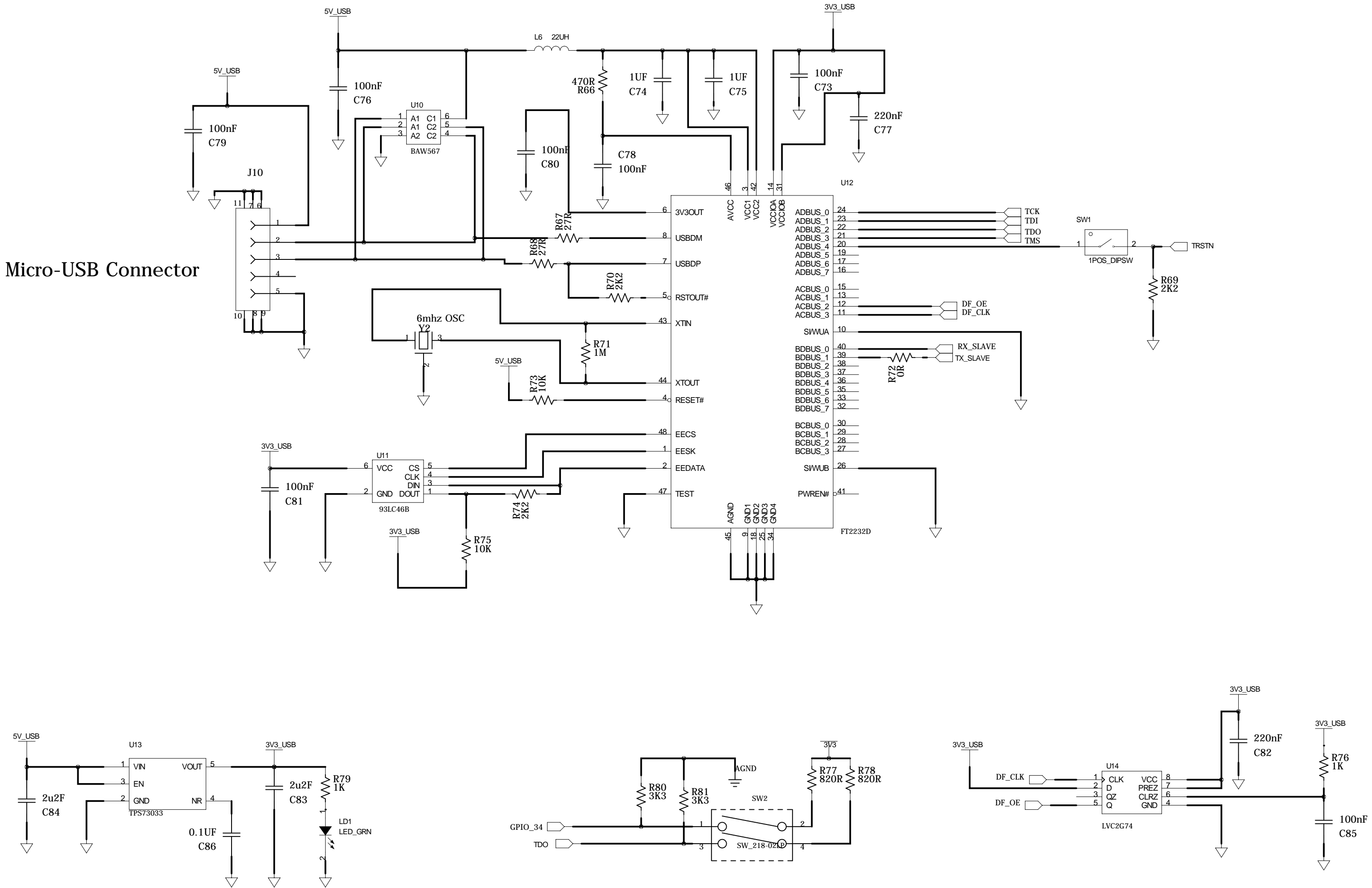
Micro-Controller Interconnection Circuit



Title			DRV8303EVM		
Size	Number	Rev			
C	DRV8303EVM	A			
Date	08/2/2010	Drawn by	<Name>		
Engineer	Milan Rajne	Filename	DRV8303EVM-Ver.B.sch	Sheet	4 of 5

USB INTERFACE

Micro-USB Connector



Texas Instruments, India

Title		
DRV8303EVM		
Size	Number	Rev
C	DRV8303EVM	A
Date	08/2/2010	Drawn by <Name>
Engineer	Milan Rajne	Filename DRV8303EVM-Ver.B.sch
	Sheet 5 of 5	

9/26/2013