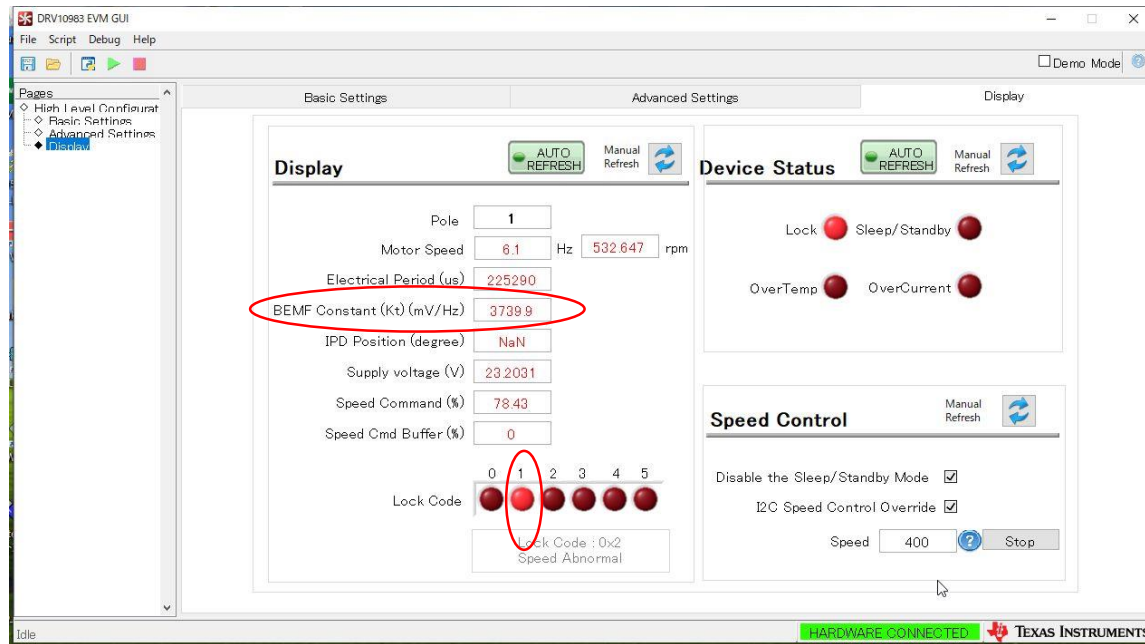
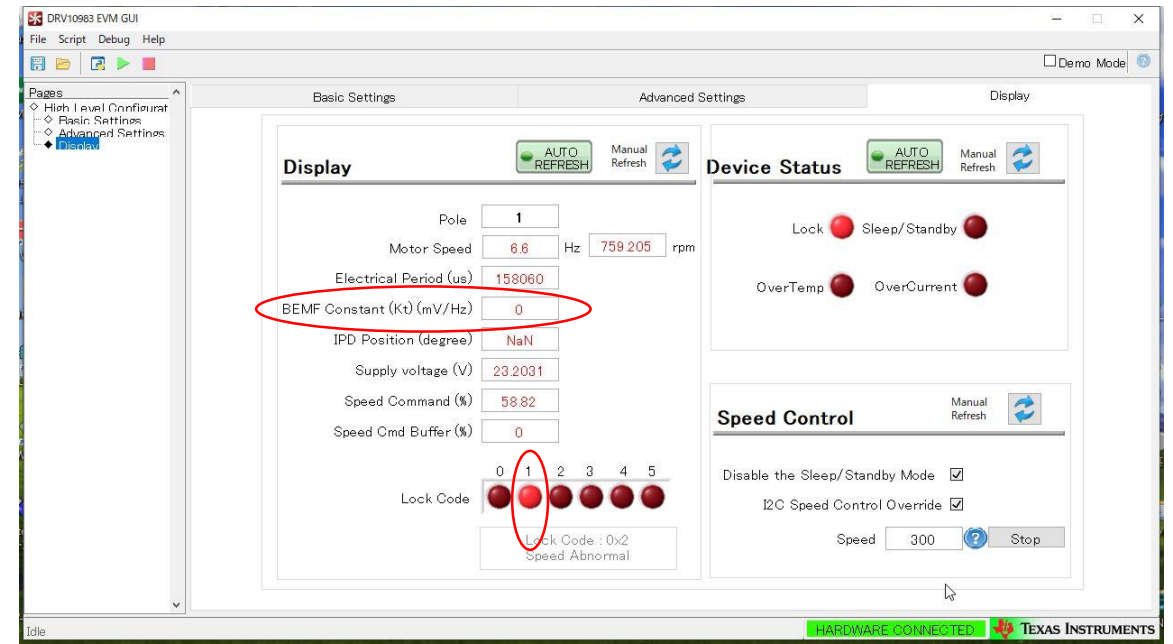


<The Display in case of failure>

<In case of starting operation with 5W type with no load>



<In case of starting operation with 2W type with no load>



It shows "Speed Abnormal" and "BEMF Constant(KT)(mV/Hz)=3739.9".
"BEMF Constant(KT)(mV/Hz)=3739.9" is out of range which is defined
"DRV10983 is 1760 mV/Hz and the minimum that can be programmed is 0.92 mV/Hz."
on the document SLOU395D.

- Should it be decreased "Current setting"?
- Should it be decreased "Open loop current rate"?
- Could you give us some comment?