

PIN NO.	L/W COLOR
1	YEL
2	RED
3	ORG
4	BLU

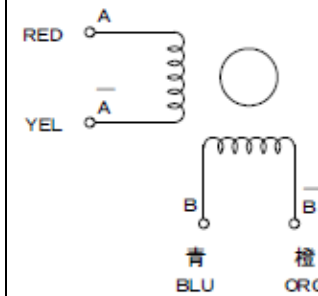
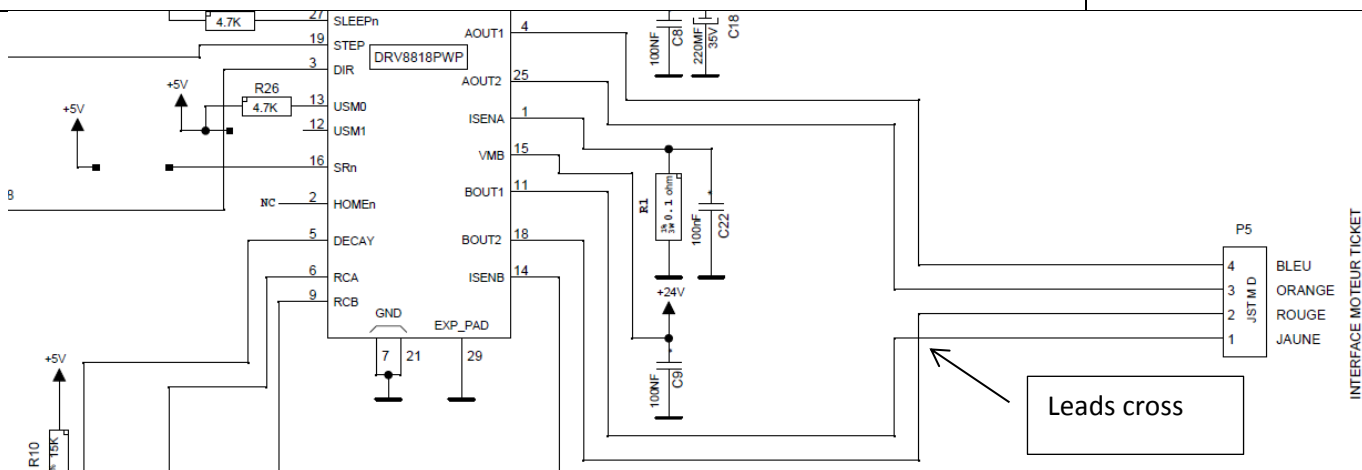


FIG. 1

A\
A
B\
B

Stepper Motor MINEBEA
type 23KM K246

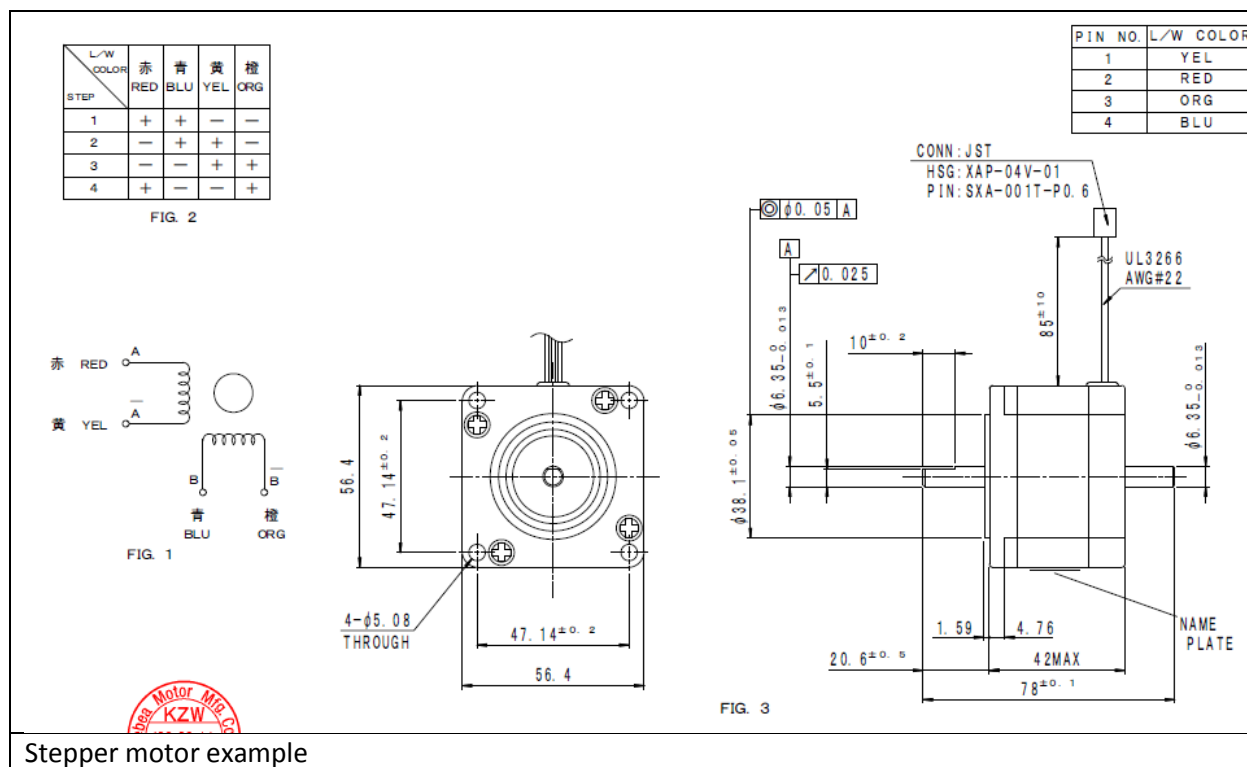


Leads cross

INTERFACE MOTEUR TICKET

AOUT1 → blue B
AOUT2 → orange B\
BOUT2 → red A
BOUT1 → yellow A\
P5
4 BLEU
3 ORANGE
2 ROUGE
1 JAUNE

With these connections, we confirm our board functions perfectly

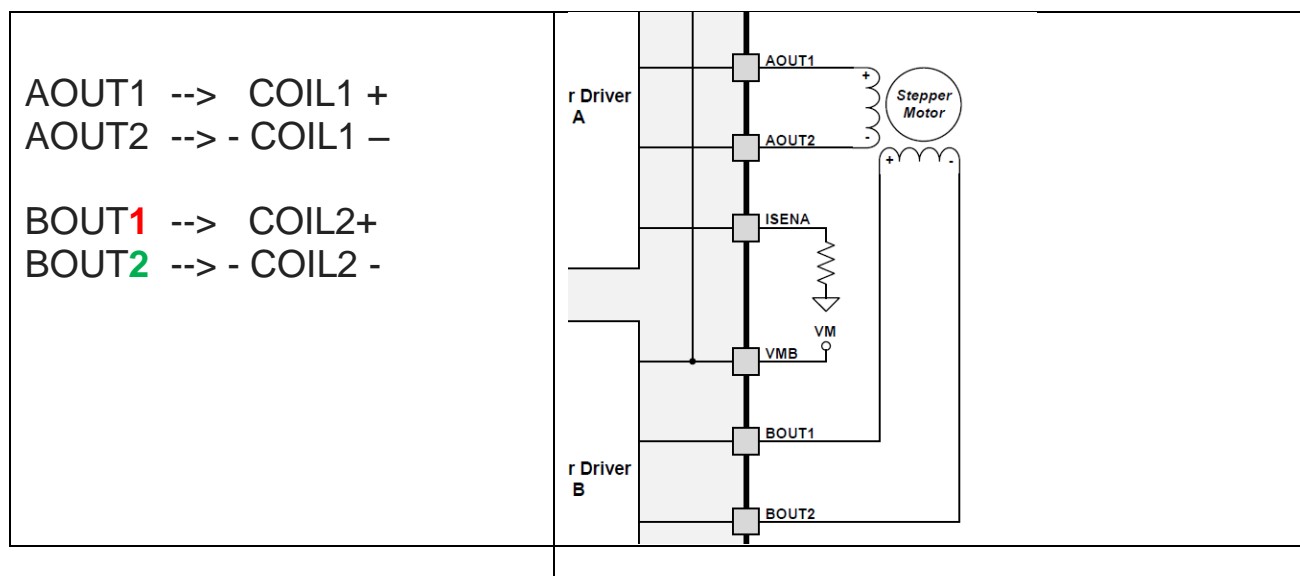


Stepper motor example

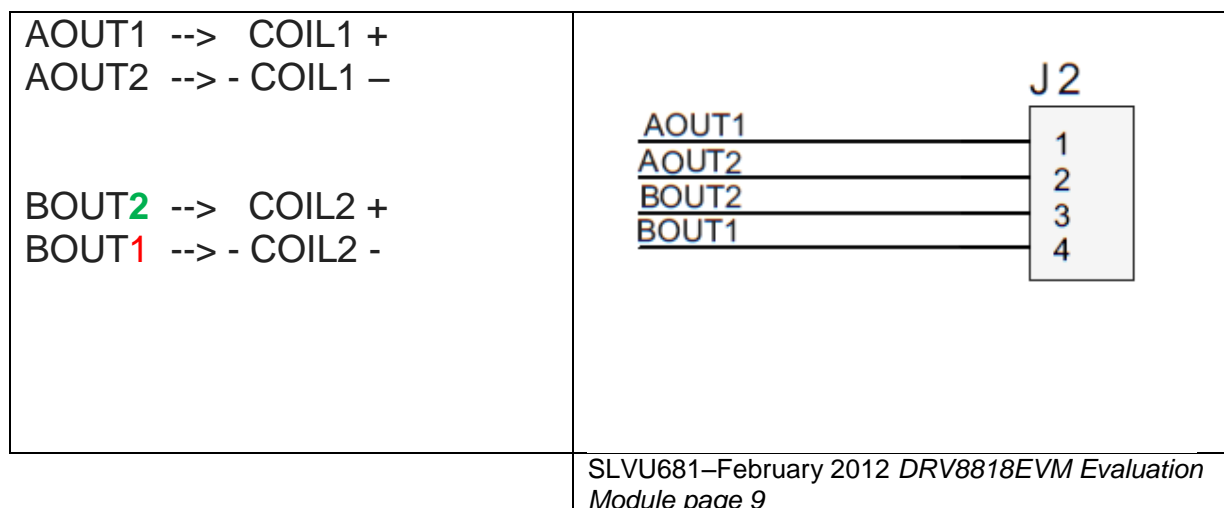
So we have the sequence +, -, +,-

Connector Pin	Color	phases
4	BLU	B (+)
3	ORG	B\ (-)
2	RED	A (+)
1	YEL	A\ (-)

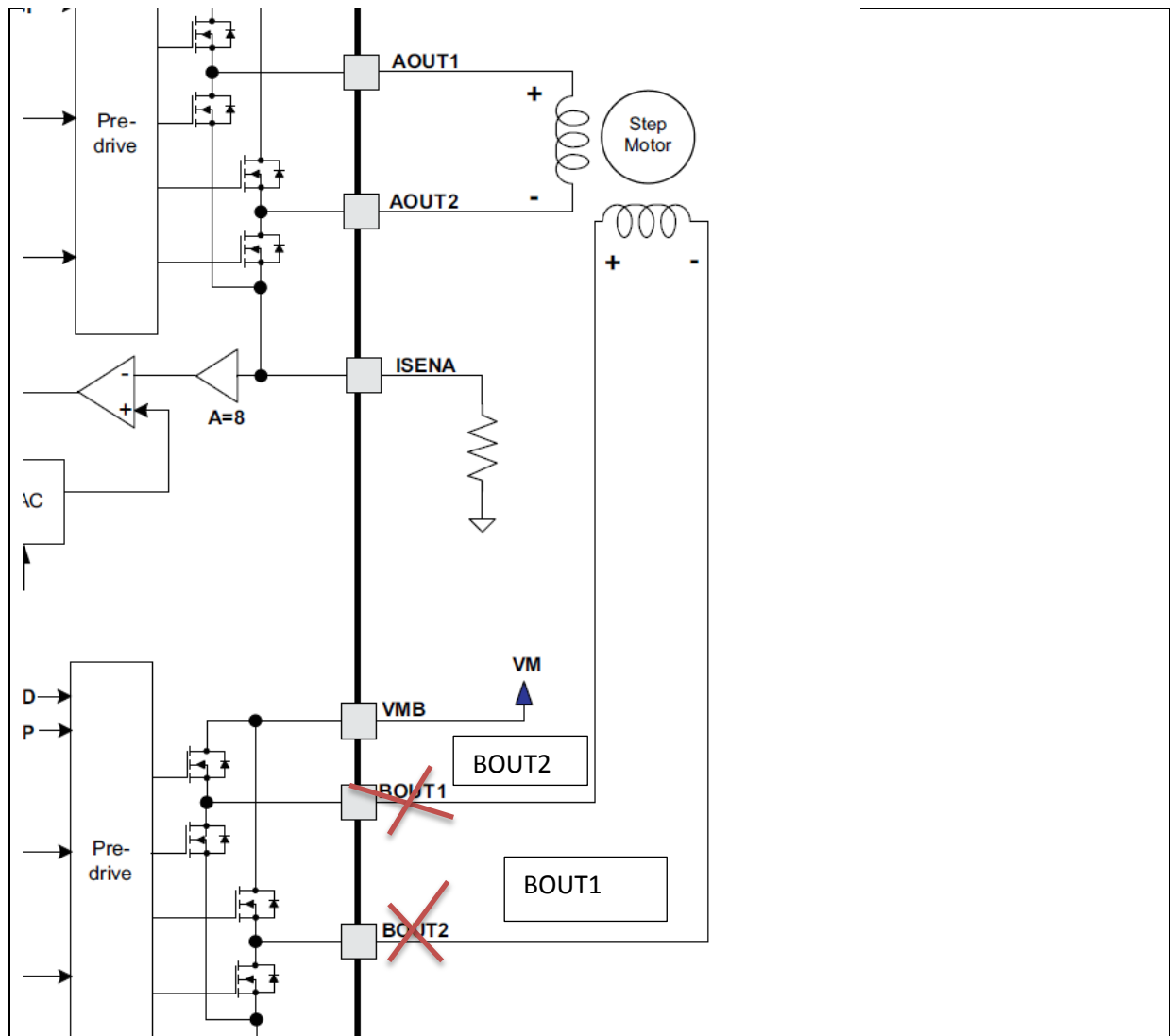
On the data sheet, DRV8818 (revised January 2016), there seems to be an error on page 9: functional block diagram

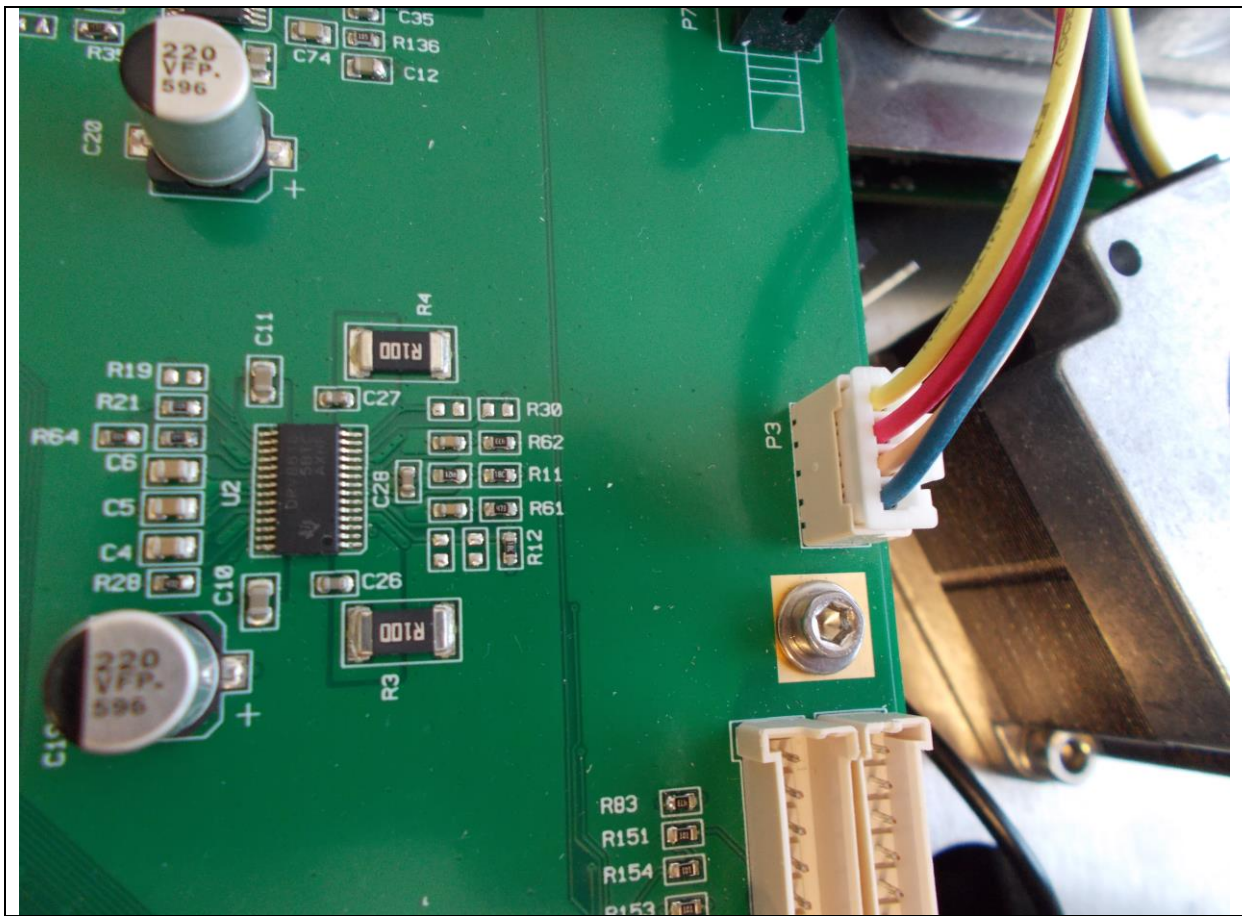


To make sure, your driver is working properly (as also indicated on the DRV8818 EVM for connector J2), the connection is:.



So at last , we would have on page 9 data sheet DRV8818





New PARKEON board working perfectly
With a connection between BOUT2 (pin 18) and RED wire of stepper motor : Coil + (A)