

EXS 221408KF A

EXCITER

CONTENT

1. Specifications
2. Drawing
3. Test Method
4. Reliability Test
5. Packing
6. History Change Record



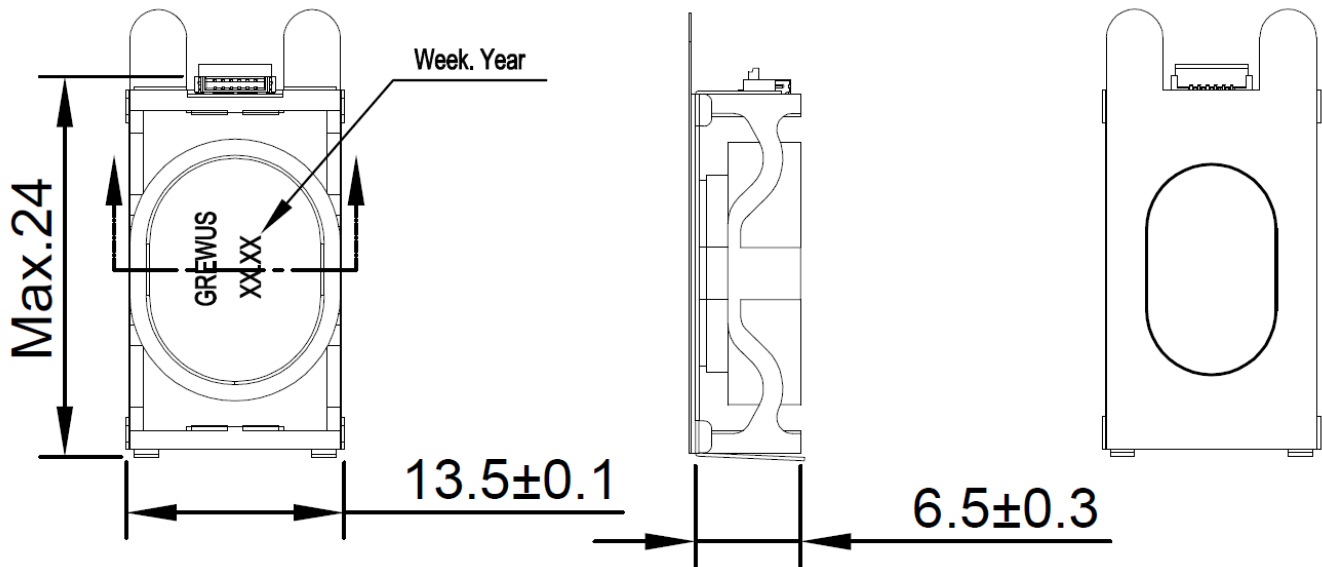
1. SPECIFICATIONS

Parameter	Unit	Conditions / Description	MIN	TYP	MAX
Input Power	W			2	3
Impedance	Ω	At 1.000Hz	6,8	8	9,2
Resonance Frequency	Hz		144	180	216
Frequency Response	Hz		F0		10.000
Acceleration	Grms	At 2Vrms, at 10g jig	6		
Buzz & Rattle		Must be normal at sine wave 4Vrms on the glass plate			
Polarity		Positive voltage to (+), Diaphragm moves forward			
Contact				CONTACT FOLIO	
Packaging				TRAY	
Operating Temperature	$^{\circ}\text{C}$		-40		+85
Storage Temperature	$^{\circ}\text{C}$		-40		+105
Weight	g			5,01	

DESIGNED BY	Christopher Pagel	DATE	2018.12.07	PART NO.	EXS 221408KF A	INDEX	A
RELEASED BY	Anouschka Esselun	DATE	2019.02.14				
CHANGED BY	Rabea Richter	DATE	2020.01.20				
DRAWING NO.	434184262						

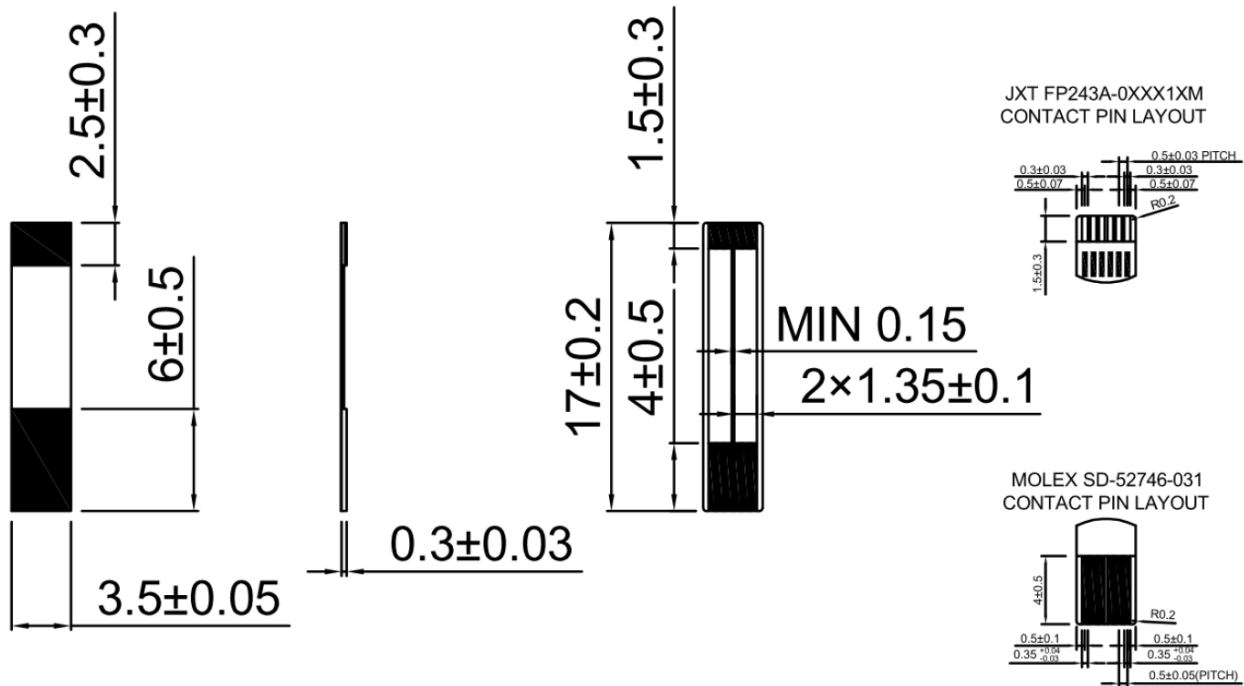
2. DRAWING

2.2 PRODUCT DIMENSIONS



Unit: mm

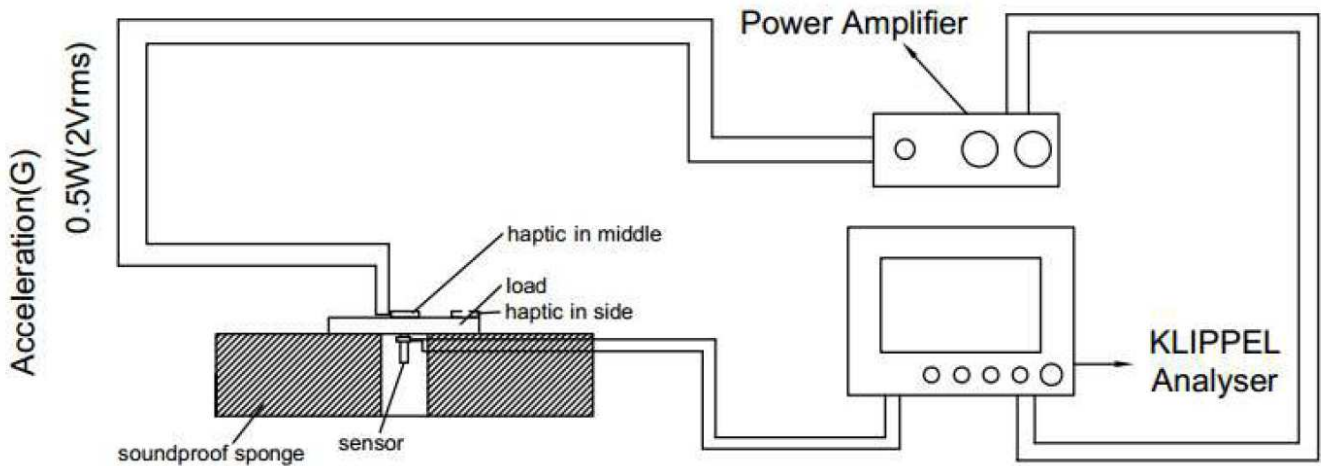
2.3 FCP DIMENSIONS



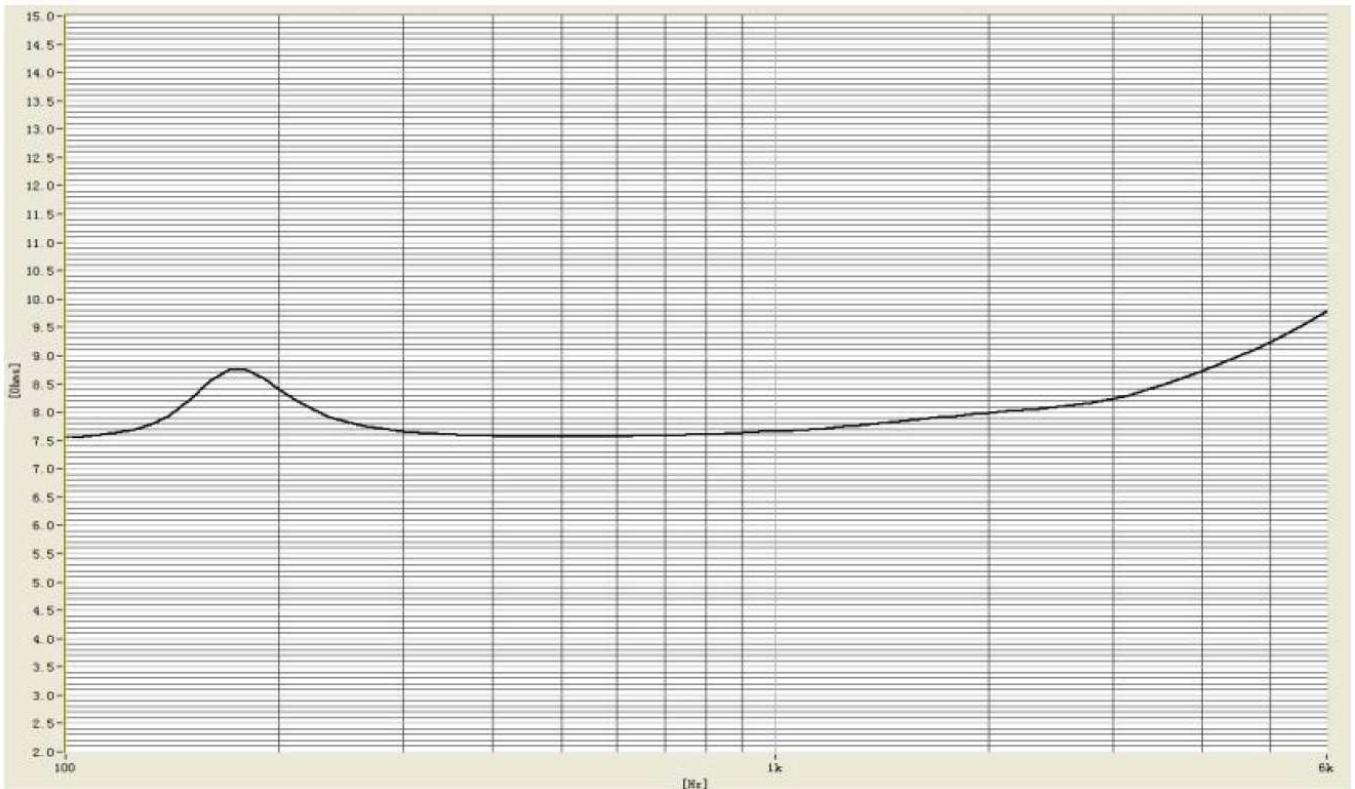
DESIGNED BY	Christopher Pagel	DATE	2018.12.07	PART NO.	EXS 221408KF A	INDEX	A
RELEASED BY	Anouschka Esselun	DATE	2019.02.14				
CHANGED BY	Rabea Richter	DATE	2020.01.20				
DRAWING NO.	434184262						

3. TEST METHOD

3.1 TEST SETUP

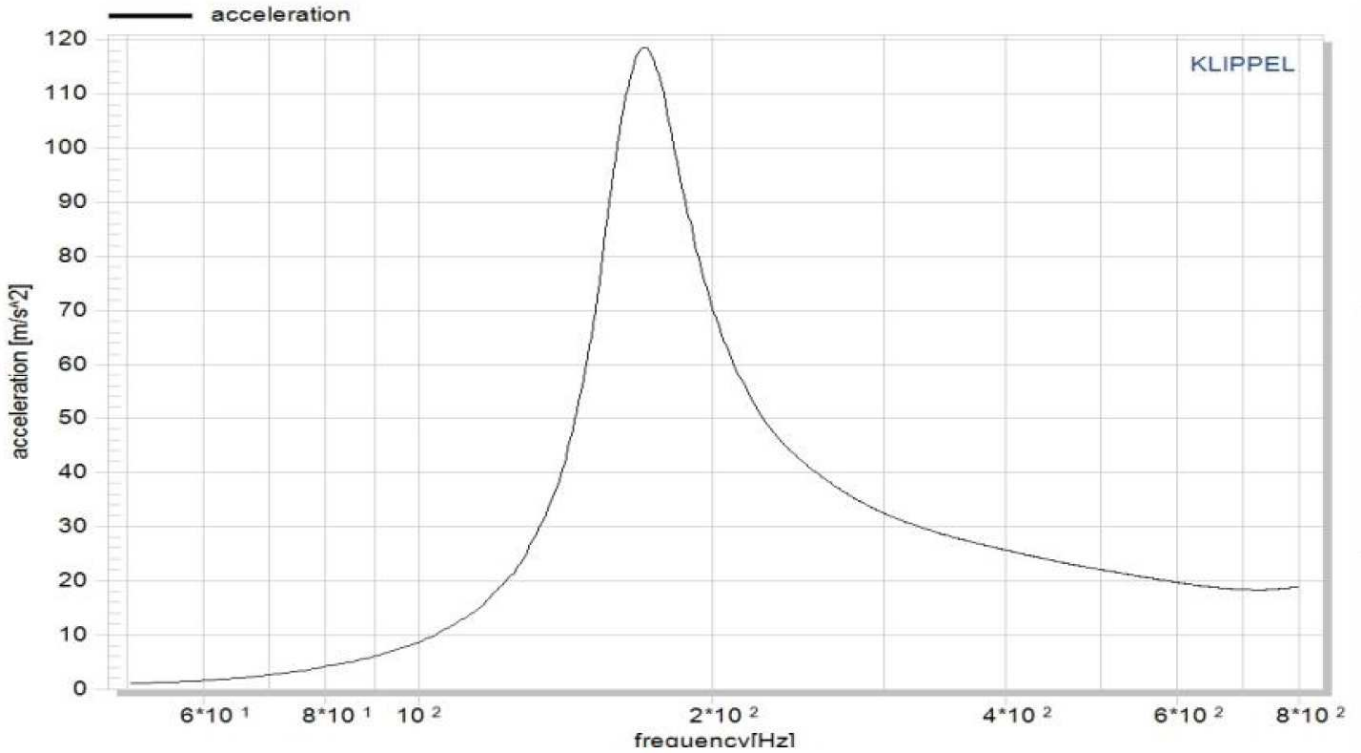


3.2 IMDEDANCE RESPONSE CURVE (only for reference)



DESIGNED BY	Christopher Pagel	DATE	2018.12.07	PART NO.	EXS 221408KF A	INDEX	A
RELEASED BY	Anouschka Esselun	DATE	2019.02.14				
CHANGED BY	Rabea Richter	DATE	2020.01.20				
DRAWING NO.	434184262						

3.3 ACCELERATION CURVE (only for reference)



4. RELIABILITY TEST

4.1 Load Test

Power (Nom) 2W
 Duration 96 hours

4.4 Damp Heat

Temperature +40 ±3°C
 Relative Humidity 90~95% RH
 Duration 96 hours

4.2 High Temperature Test

Temperature +85 ±3°C
 Duration 96 hours

4.3 Low Temperature Test

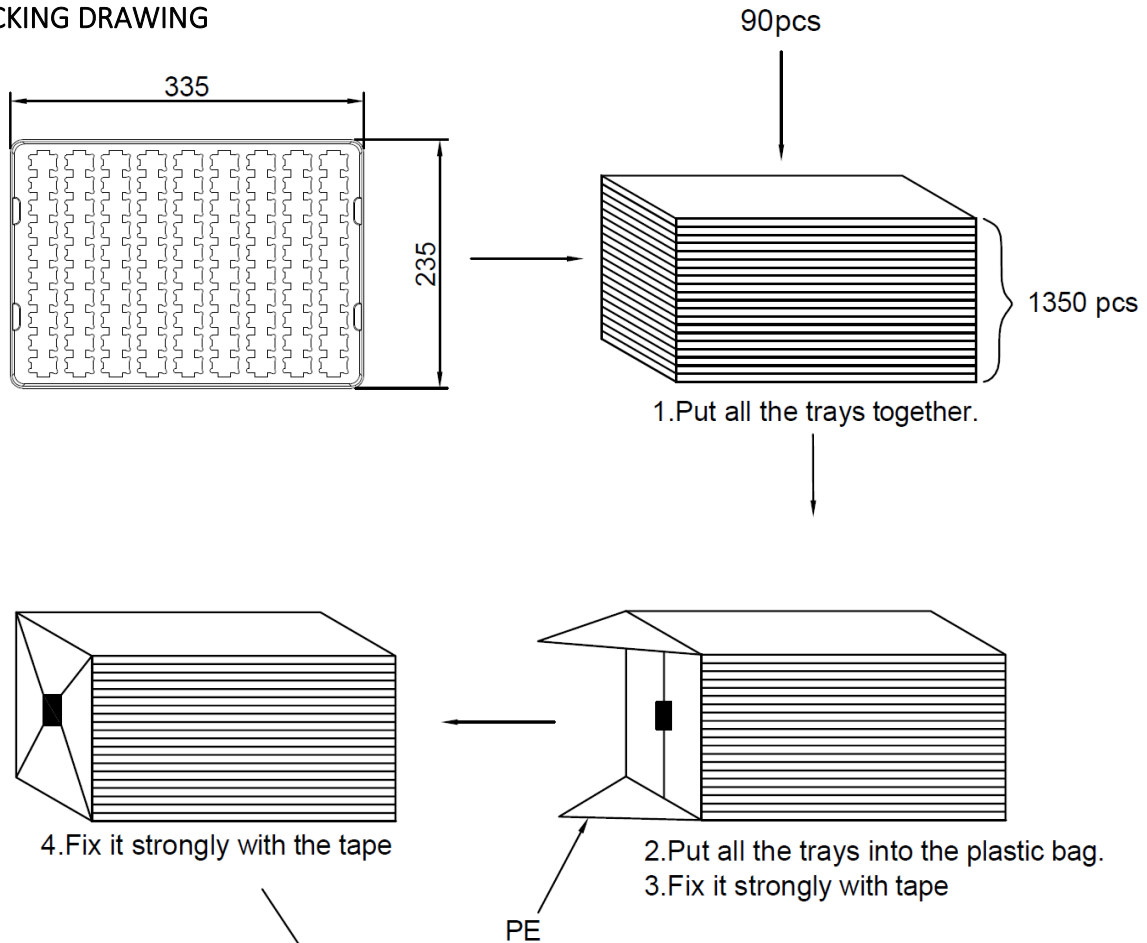
Temperature -40 ±3°C
 Duration 96 hours

Notice: After the test, all electronic and acoustic characteristics should be satisfied with the specification.

DESIGNED BY	Christopher Pagel	DATE	2018.12.07	PART NO.	EXS 221408KF A	INDEX	A
RELEASED BY	Anouschka Esselun	DATE	2019.02.14				
CHANGED BY	Rabea Richter	DATE	2020.01.20				
DRAWING NO.	434184262						

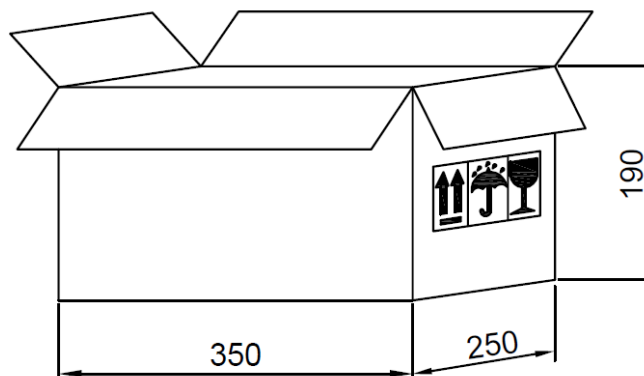
5. PACKING

5.1 PACKING DRAWING



5.2 PACKING QUANTITY

- 90pcs per tray
- 15 trays per box
- 1350pcs per box in total
- Box size 35x25x19cm



DESIGNED BY	Christopher Pagel	DATE	2018.12.07	PART NO.	EXS 221408KF A	INDEX	A
RELEASED BY	Anouschka Esselun	DATE	2019.02.14				
CHANGED BY	Rabea Richter	DATE	2020.01.20				
DRAWING NO.	434184262						

6. HISTORY CHANGE RECORD

REV	CHANGE ITEMS		DATE
	BEFORE CHANGE	AFTER CHANGE	
1		Packaging with added waterproof plastic bag	2018.09.21
2		Add picture and test setup	2019.02.14
3	Old layout	New layout	2019.08.19
4	Maximum outer diameter: 22,2 +/-0,1mm	Increase maximum outer diameter: 24mm	2019.12.13
5	Part name: EXS221408LA	Part name: EXS221408KFA	2020.01.20
6		Update drawing: Add Printing	2020.01.20

DESIGNED BY	Christopher Pagel	DATE	2018.12.07	PART NO.	EXS 221408KF A	INDEX	A
RELEASED BY	Anouschka Esselun	DATE	2019.02.14				
CHANGED BY	Rabea Richter	DATE	2020.01.20				
DRAWING NO.	434184262						