

Texas Instruments
MCU2200

F28xxx - Digital Motor Control

Caution!
High Voltage

Caution!
High Voltage

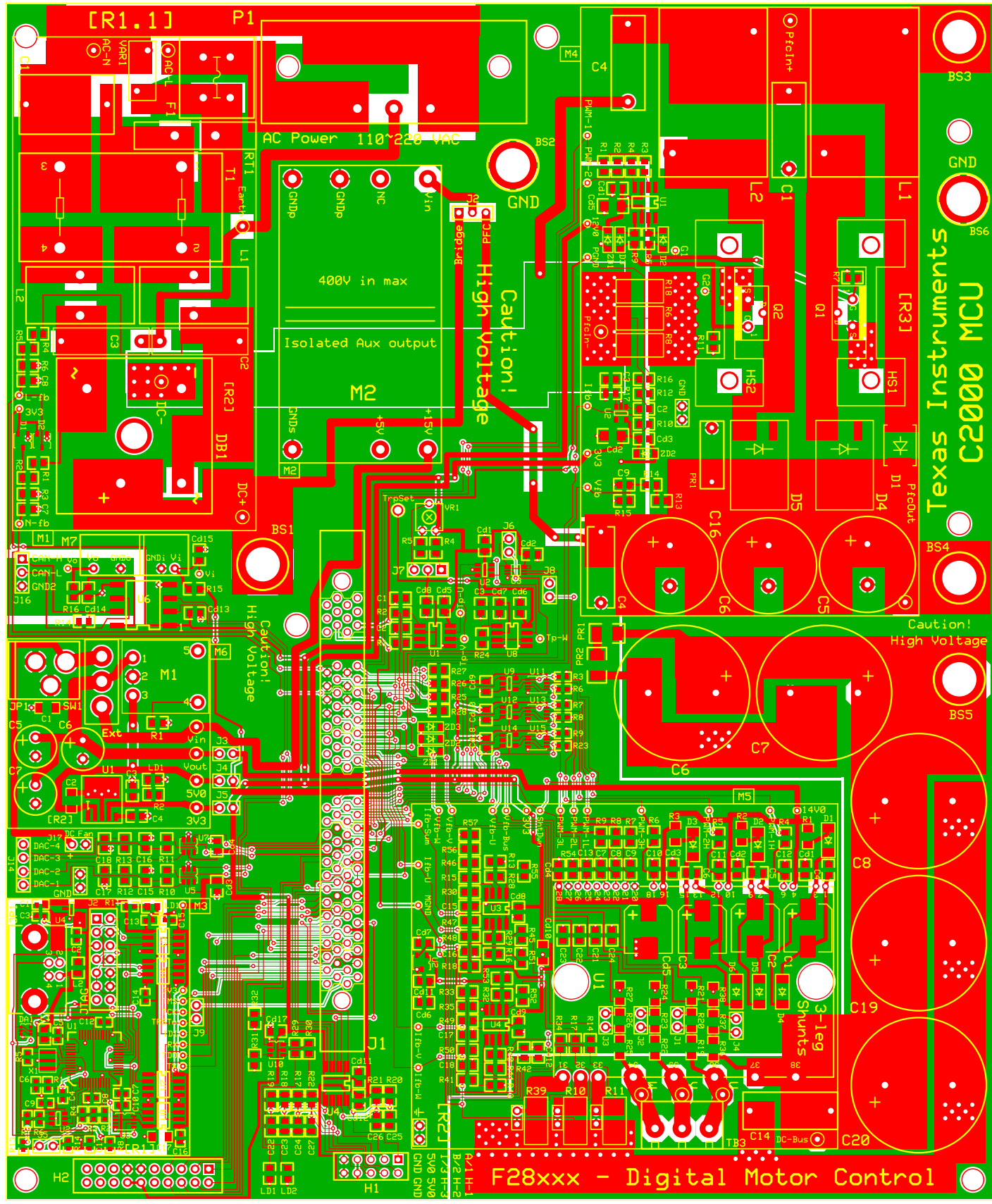
Caution!
High Voltage

AC Power 110~220 VAC

400V in max
Isolated Aux output

[R1.1]

3-leg
Shunts



Texas Instruments
C2000 MCU

F28xxx - Digital Motor Control