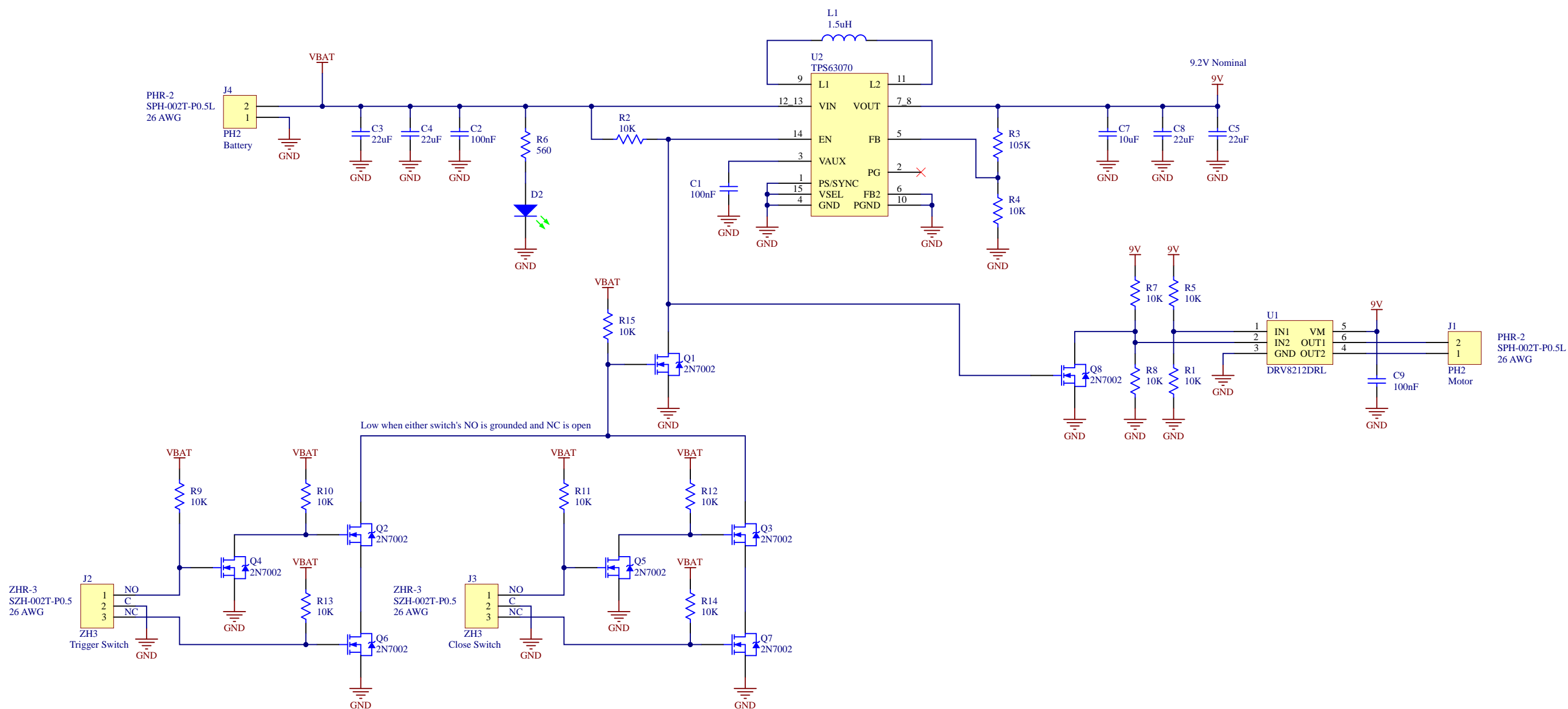


| REVISIONS | | | | |
|-----------|--------------------|---------|----------|-----------|
| REV. | DESCRIPTION | CR # | DATE | SUBMITTED |
| A | Production Release | 23-2175 | 06/23/23 | D.Dull |
| | | | | |
| | | | | |
| | | | | |



ZHR-3
SZH-002T-P0.5
26 AWG

J2
1 NO
2 C
3 NC
ZH3
Trigger Switch

ZHR-3
SZH-002T-P0.5
26 AWG

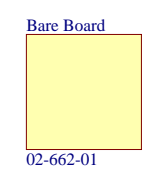
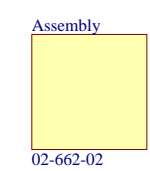
J3
1 NO
2 C
3 NC
ZH3
Close Switch

PHR-2
SPH-002T-P0.5L
26 AWG

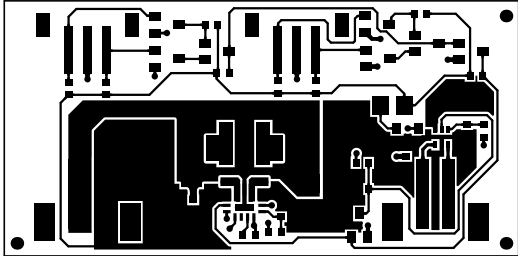
J1
2
1
PH2
Motor



Connector Current Ratings:
ZH: 1A
PH: 2A



| | | | |
|--|-----------|--------------------------------------|-----------------|
| NOVO CONFIDENTIAL DO NOT DISTRIBUTE | | | |
| DRAWN R.Braegelmann | | DESCRIPTION SCH, Motor Controller | |
| ENG D.Dull | SIZE B | DWG. NO. 02-662-02 | REV. A |
| CAD FILE Motor Controller.SchDoc | | SCALE NONE | SHEET 1 OF 1 |



L1-Top

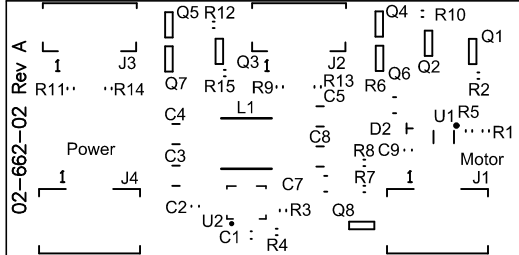
02-662-01 Rev A

05-005-01 Rev A



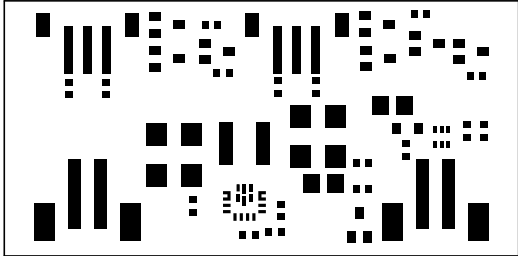
L2-Bottom

02-662-01 Rev A



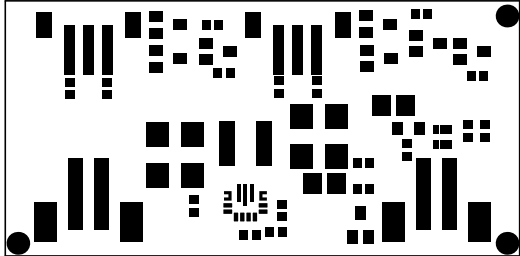
Top Overlay

02-662-01 Rev A



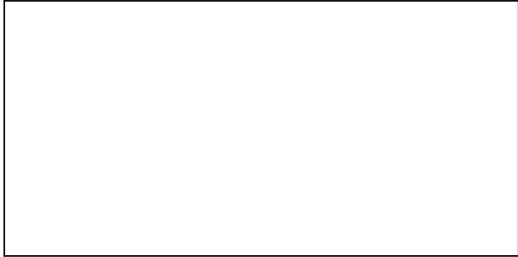
Top Paste

02-662-01 Rev A



Top Solder

02-662-01 Rev A



Bottom Solder

02-662-01 Rev A

