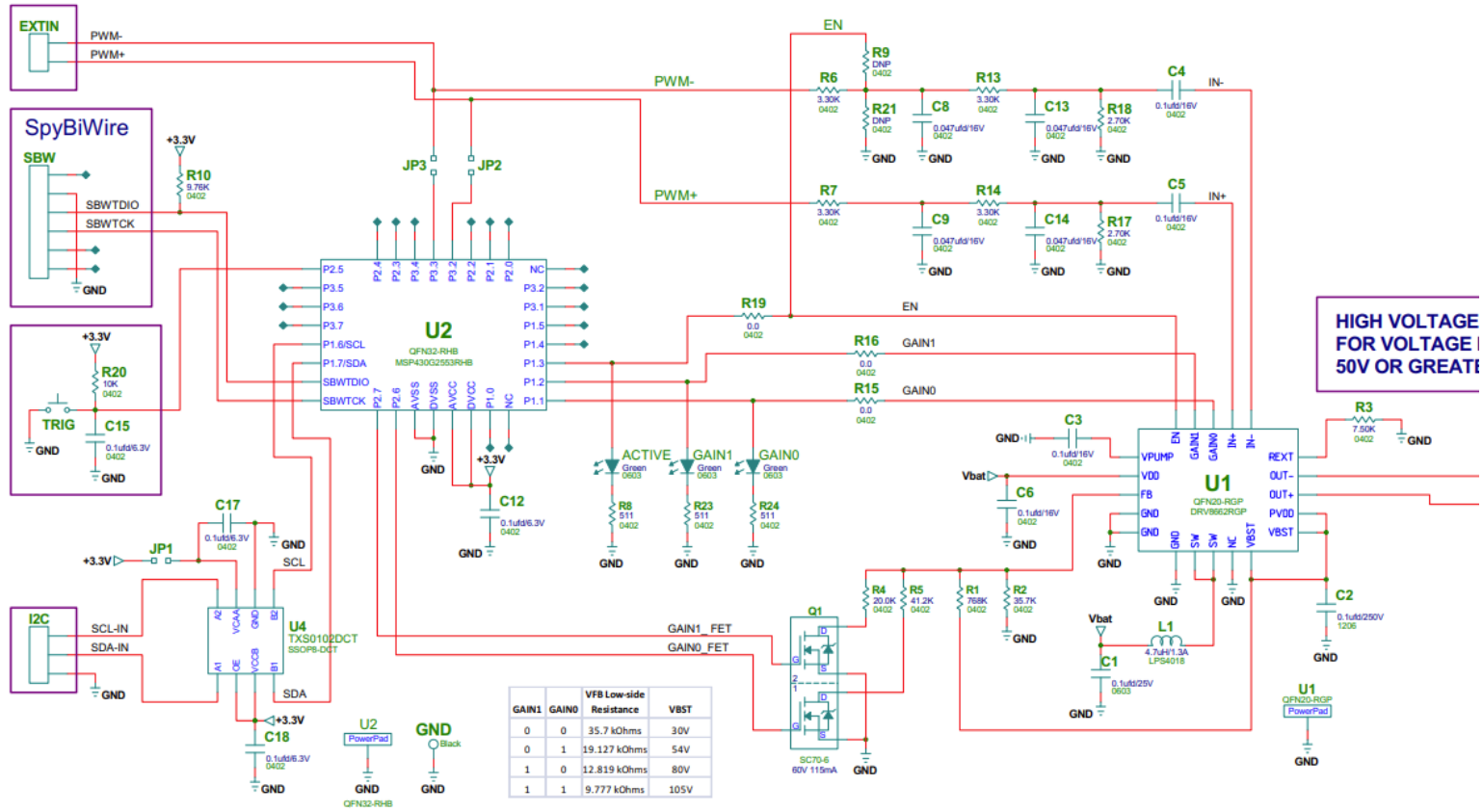


Here is the original figure:



Can I remove some parts of the schematic diagram? And I would like to only use DRV8662. (the diagram is as follow:)

Is there any requirement of the input PWM for this schematic diagram below? Like frequency, amplitude, and duty cycle of the PWM? And also how to determine the filter circuit according to PWM?

EN is connected to PWM-, what if I do not connect them, is there any influence?

R9 and R21 are unknown, how to determine the value of it?

