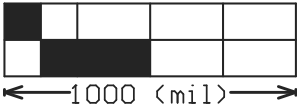
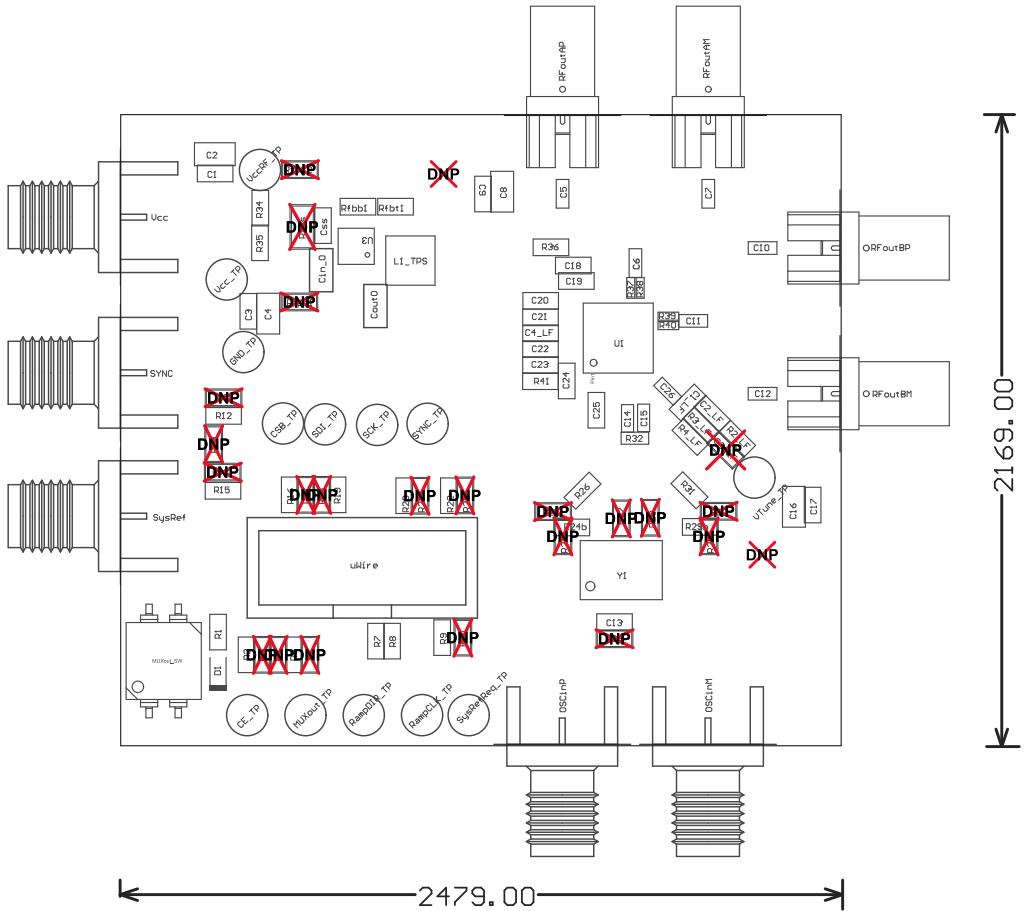


ALL SMA CONNECTORS TO FLUSH TO THE EDGE OF THE BOARD, NO GAP ALLOWED.
This is especially critical for: RFoutAP, RFoutAM, RFoutBP, and RFoutBM SMA connectors

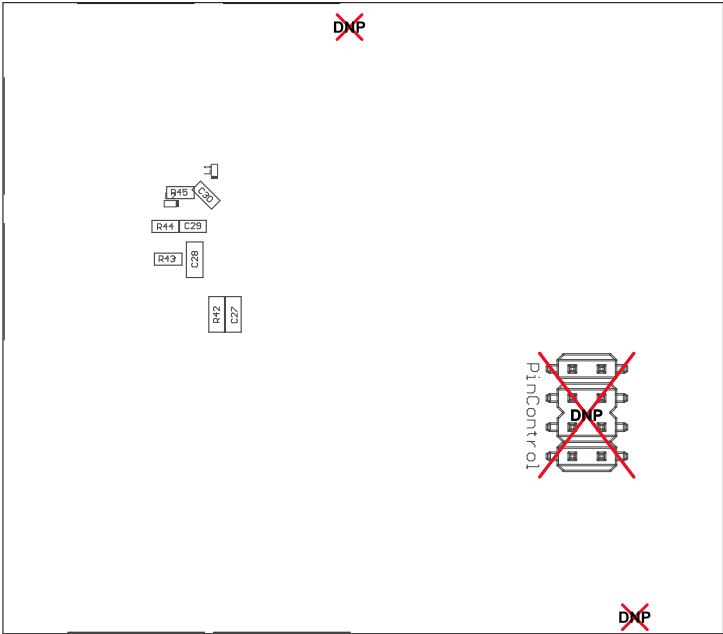


COMPONENTS MARKED 'DNP' SHOULD NOT BE POPULATED.

ASSEMBLY VARIANT: 001

PCB VIEWED FROM TOP SIDE	BOARD #:	SU601308	REV:	B	SUN REV:	Not In VersionControl
M2 Board Dimensions	TID #:	.TID				
PLOT NAME = Top LayerAssembly Drawing	GENERATED :	8/2/2017	1:43:57 PM	TEXAS INSTRUMENTS		

12.00" 00.00



12.00" 00.00

COMPONENTS MARKED "DNP" SHOULD NOT BE POPULATED.

ASSEMBLY VARIANT: 001



0001 (im)

PCB VIEWED FROM BOTTOM SIDE	BOARD #: SU601308	REV: B	SUN REV: Not In VersionControl
	TID #: .TID	MS Board 0001	
PLOT NAME = Bottom_LayerAssembly Drawing	GENERATED : 8/2/2017 11:43:58 PM	TEXAS INSTRUMENTS	