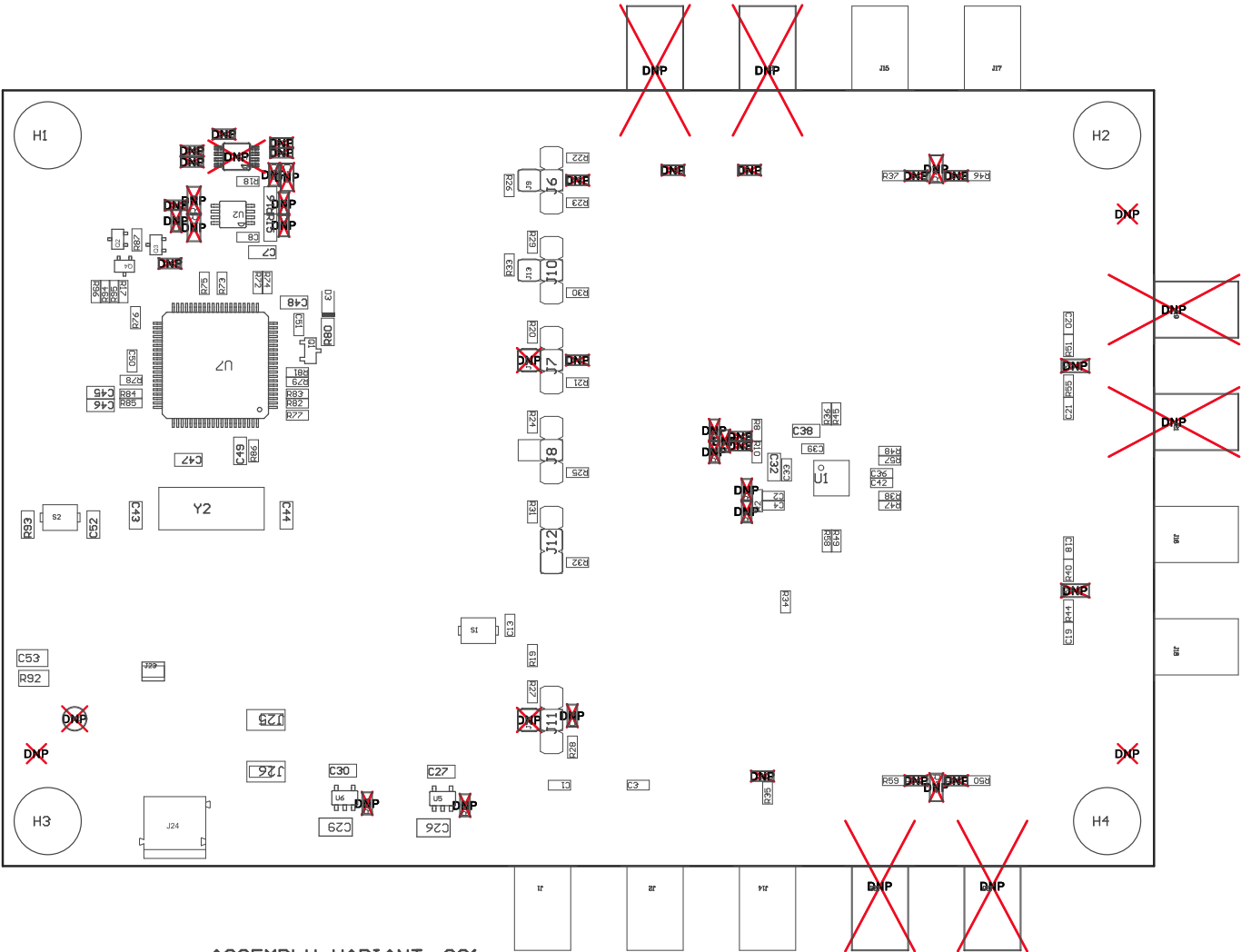


# Special Assembly Notes:

1. SMA connectors must be installed per manufacturer's instructions to ensure proper circuit performance

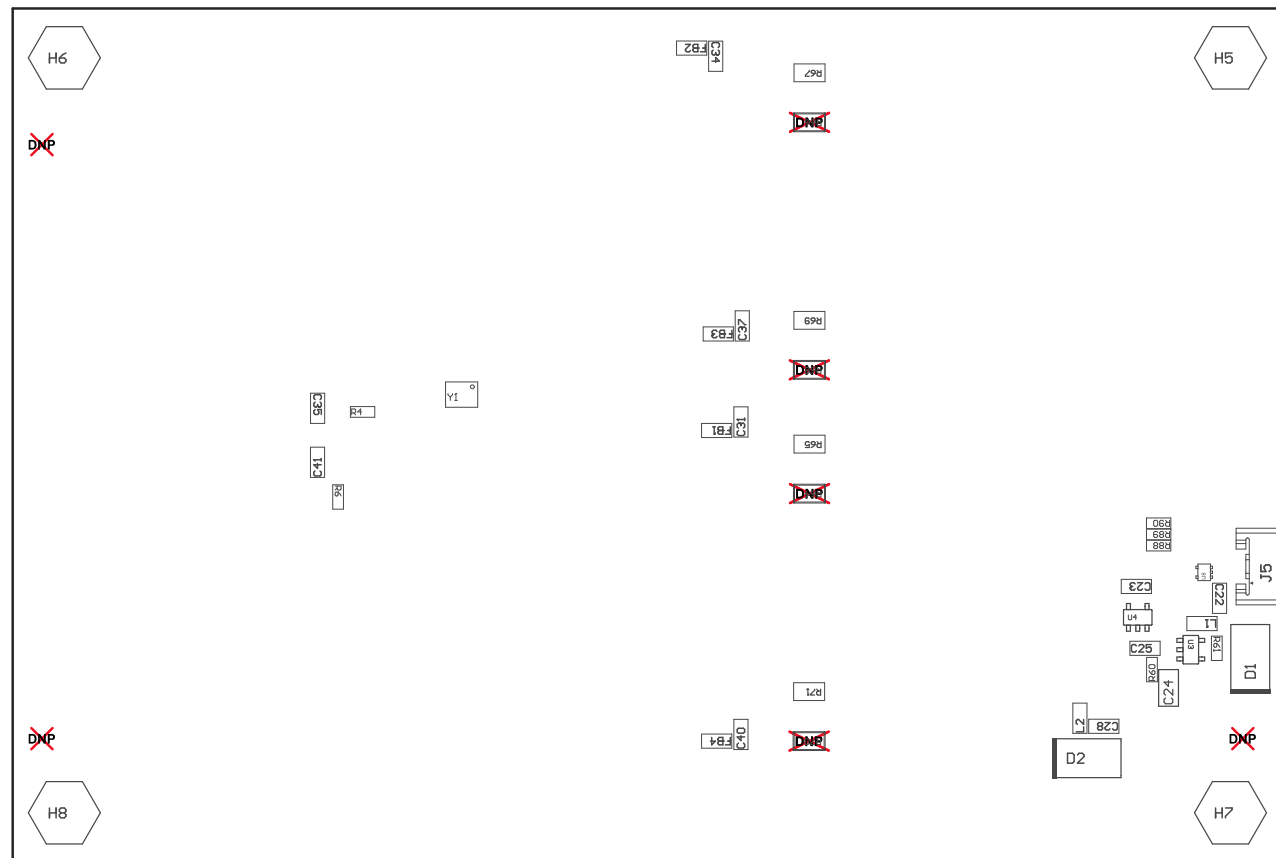
Z21 ■ These assemblies are ESD sensitive, ESD precautions shall be observed.  
Z22 ■ These assemblies must be clean and free from flux and all contaminants. Use of no clean flux is not acceptable.  
Z23 ■ These assemblies must comply with workmanship standards IPC-A-610 Class 2, unless otherwise specified.

COMPONENTS MARKED 'DNP' SHOULD NOT BE POPULATED.



ASSEMBLY VARIANT: 001

PCB VIEWED FROM TOP SIDE	BOARD #: HSDC063	REV: A	SUN REV: Not In VersionControl
	TID #: N/A		
PLOT NAME = Top Assembly Drawing	GENERATED : 6/24/2019 6:18:48 PM		TEXAS INSTRUMENTS



COMPONENTS MARKED 'DNP' SHOULD NOT BE POPULATED.  
 ASSEMBLY VARIANT: 001

PCB VIEWED FROM BOTTOM SIDE	BOARD #: HSDC063	REV: A	SUN REV: Not In VersionControl
	TID #: N/A		
PLOT NAME = Bottom Assembly Drawing	GENERATED : 6/24/2019 6:18:50 PM	TEXAS INSTRUMENTS	