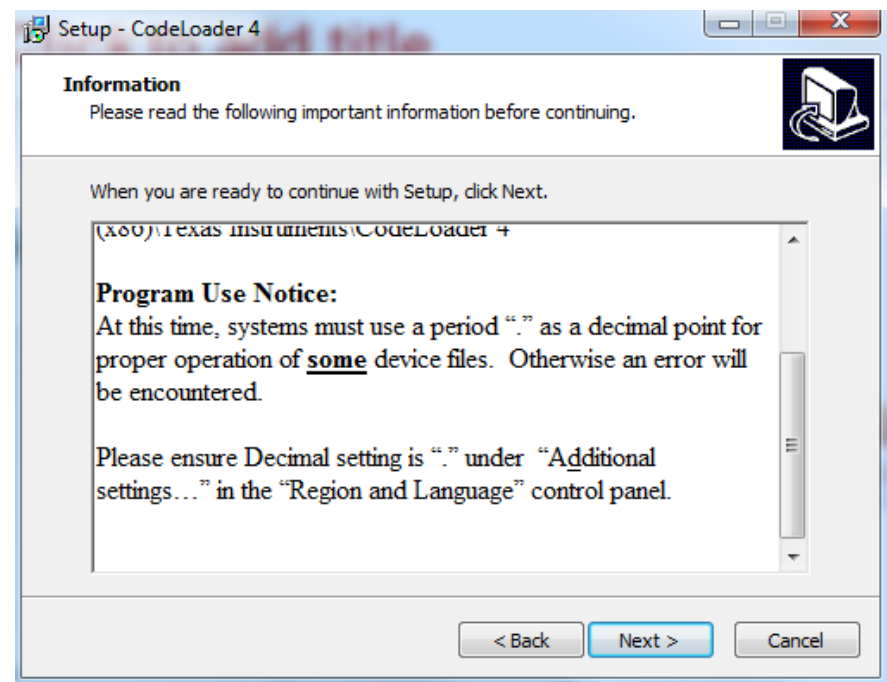
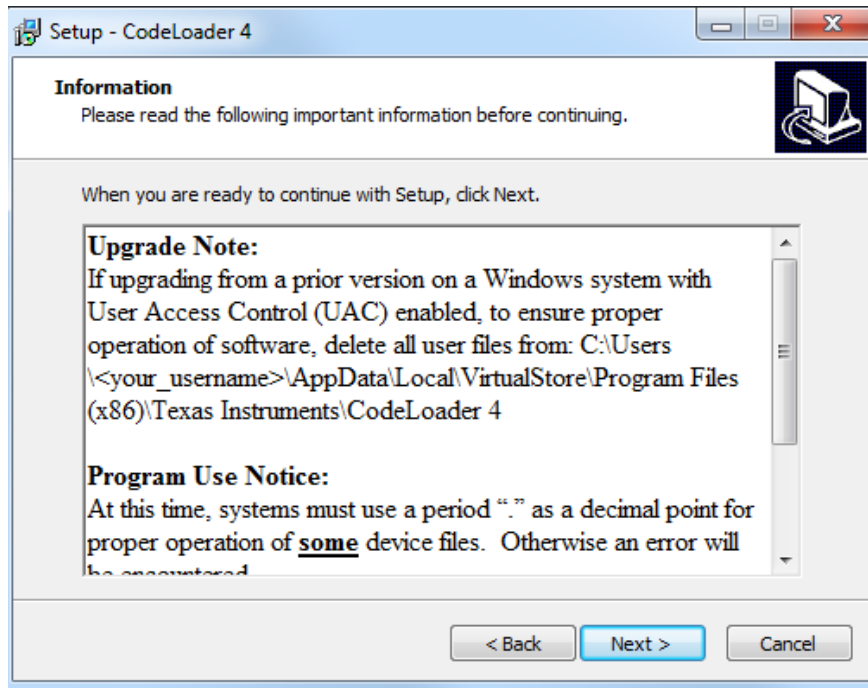


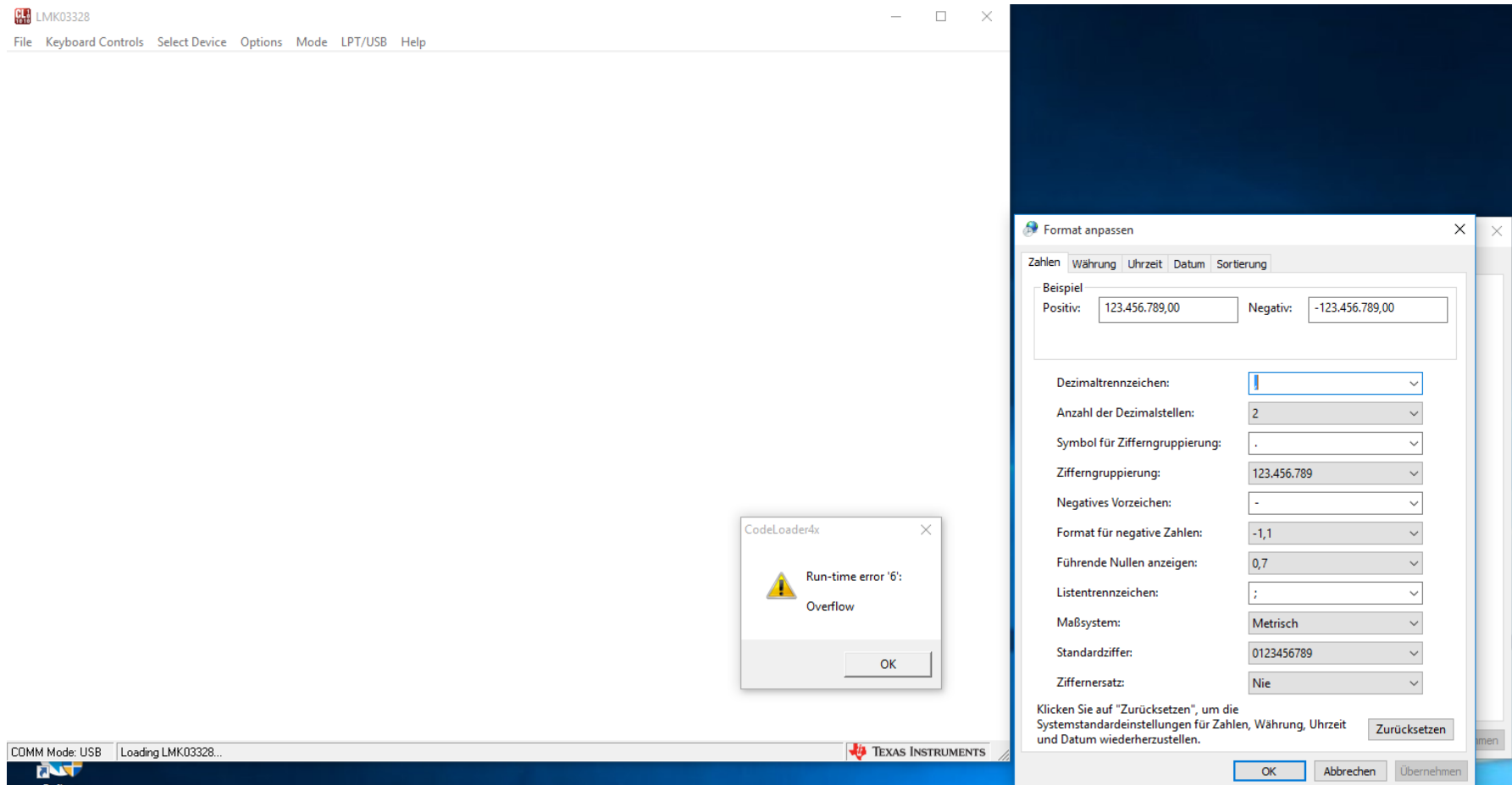
# Codeloader 4

**On Non-English Systems using Comma as a Decimal Separator**

# Codeload Installer



# Regional Settings using “,” Separator



# Regional Settings using “.” Separator

The screenshot displays the LMK03328 configuration tool interface. The top menu bar includes File, Keyboard Controls, Select Device, Options, Mode, LPT/USB, and Help. The main window is divided into several sections:

- Port Setup:** Includes checkboxes for RESETN\_SW and SYNCN\_SW.
- Suggested PLL Settings:**
  - Integer-N Mode:** Ext C2 = 3300pF, PLL Order = Integer, Loop BW = Normal, LF Type = 2nd/3rd Order, Stretch = 200 ps
  - Fractional-N Mode:** Ext C2 = 0.033uF, PLL Order = 1st/2nd/3rd, Loop BW = Normal, LF Type = 3rd Order, Stretch = 600 ps
  - Narrow band Mode:** Ext C2 = 22 uF, PLL Order = Any, LBW Mode = Narrow, LF Type = 2nd Order, Stretch = Any, PLL PDF ~1 MHz
- PRREF Input:** Includes S-E Input, Max gain, TERM2GND\_PRI, DIFFTERM\_PRI, and AC\_MODE\_PRI.
- SECREF Input:** Includes XTAL Input, Max gain, TERM2GND\_SEC, DIFFTERM\_SEC, and AC\_MODE\_SEC.
- PLL1:** Includes PLL1\_PDN, SYNC\_EN, PLL Order, Dither, Stretch, R3 Mode, Loop BW, LF Type, R2, R3, C1, and C3.
- PLL2:** Includes PLL2\_PDN, SYNC\_EN, PLL Order, Dither, Stretch, R3 Mode, Loop BW, LF Type, R2, R3, C1, and C3.
- XTAL OSC Frequency Margining:** Includes Margin Option, SW Offset Control, and HW Offset (GPIOs) Step Controls.
- Reference Input Detection:** Includes Ref Detector, PRI S-E Detect Mode, SEC S-E Detect Mode, PRI Diff Detect Level, SEC Diff Detect Level, and PRI / SEC Slew Rate Detect Status.
- Input / XO Control and PLL Timers:** Includes Input Muxes, XO Power, XO Timer 1, XO Timer 2, XO Mode After Switch, and PLL1/2 CL Wait and VCO Wait times.

The bottom status bar shows COMM Mode: USB and Selected device: LMK03328.

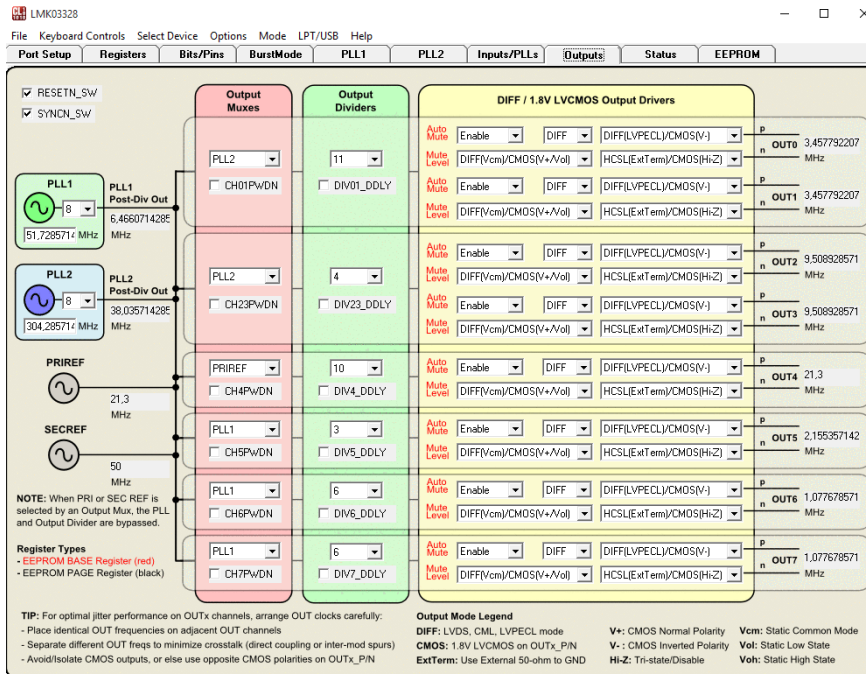
The screenshot displays the Windows Region dialog box, which is used to configure regional settings. The dialog box is divided into several sections:

- Format:** Includes tabs for Aufenthaltsort, Verwaltung, and Format anpassen.
- Format anpassen:**
  - Zahlen:** Includes options for Zahlen, Währung, Uhrzeit, Datum, and Sortierung.
  - Beispiel:** Shows the format for positive and negative numbers.
  - Dezimaltrennzeichen:** Includes a dropdown menu for the decimal separator.
  - Anzahl der Dezimalstellen:** Includes a dropdown menu for the number of decimal places.
  - Symbol für Zifferngruppierung:** Includes a dropdown menu for the grouping symbol.
  - Zifferngruppierung:** Includes a dropdown menu for the grouping format.
  - Negatives Vorzeichen:** Includes a dropdown menu for the negative sign.
  - Format für negative Zahlen:** Includes a dropdown menu for the negative number format.
  - Führende Nullen anzeigen:** Includes a dropdown menu for leading zeros.
  - Listentrennzeichen:** Includes a dropdown menu for the list separator.
  - Maßsystem:** Includes a dropdown menu for the measurement system.
  - Standardziffer:** Includes a dropdown menu for the standard digit.
  - Ziffernersatz:** Includes a dropdown menu for the digit replacement.
- Klicken Sie auf "Zurücksetzen", um die Systemstandardeinstellungen für Zahlen, Währung, Uhrzeit und Datum wiederherzustellen.**
- Zurücksetzen:** Includes a button to reset the settings.

# Keeping the “,” Separator

E.g. install directory

“C:\Texas Instruments\CodeLoader 4”



1. Search & Replace in the install directory only, no sub-folders
2. In file extensions “\*.ini” and “\*.fs”
3. Search for regular expression
  1. “([0-9])\.([0-9])”
4. Replace all with regular expression
  1. “\1,\2”

Or:

Use attached zip file for installer  
“SNAC014e” of Jan 2016.

# Root Cause

- The GUI adapts to the local setting
  - One can enter “156,25” for an input frequency
- Script files are used to do the calculations in the GUI
  - They are written in English nomenclature
  - The script text is cast from a string to a number
  - The decimal separator is automatically used from the local regional setting
- Therefore
  - either the regional settings have to be changed
  - Or the scripts files have to be manually adapted to the local language decimal separator

