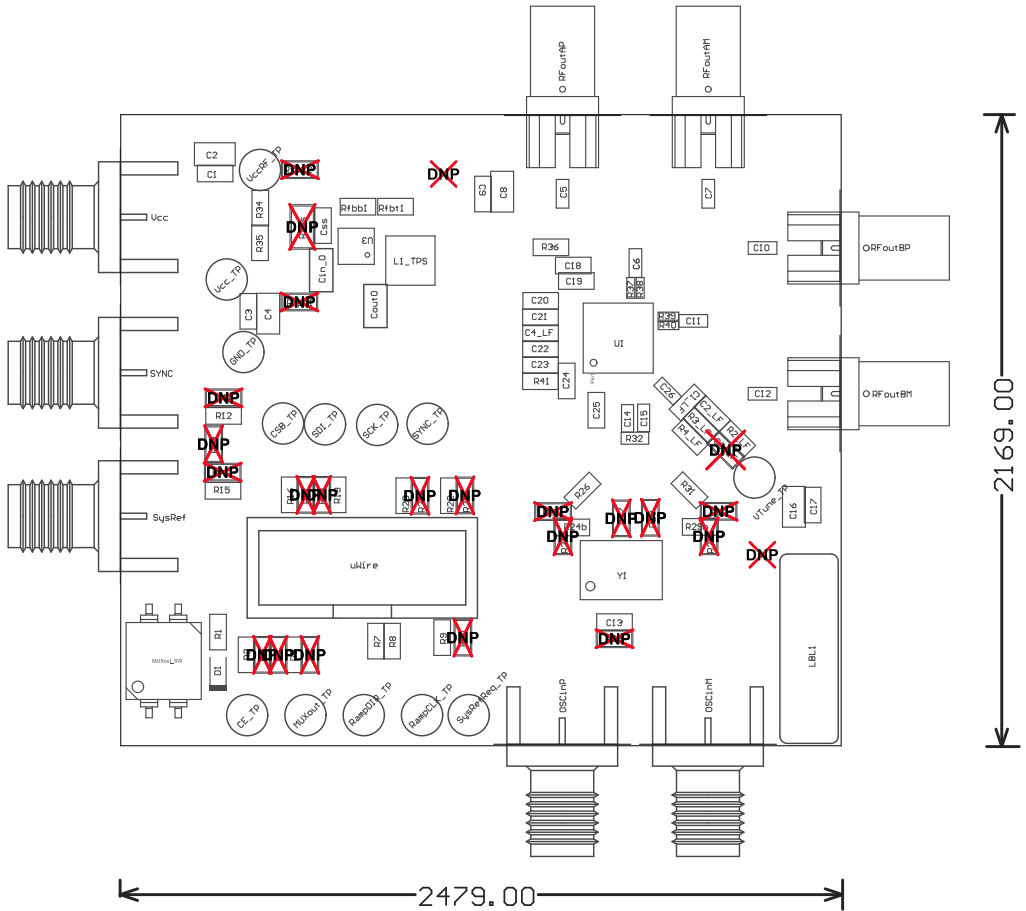


ALL SMA CONNECTORS TO FLUSH TO THE EDGE OF THE BOARD, NO GAP ALLOWED.
This is especially critical for: RFoutAP, RFoutAM, RFoutBP, and RFoutBM SMA connectors



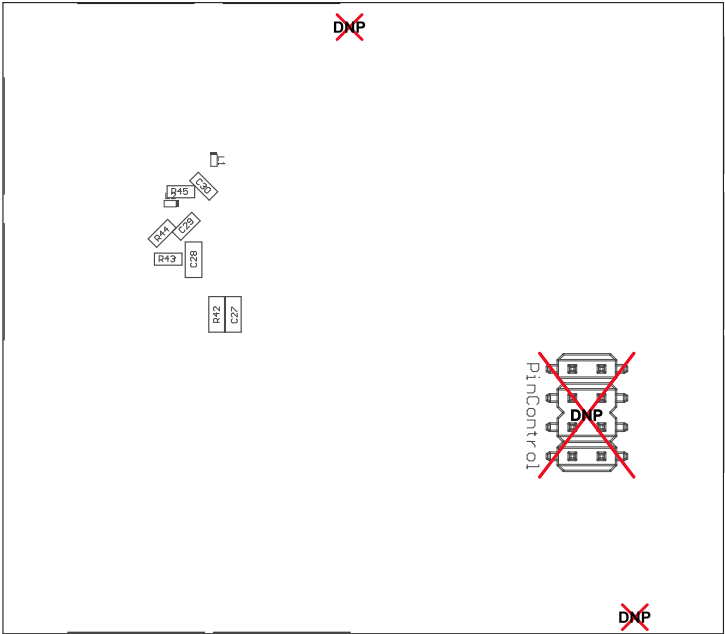
COMPONENTS MARKED 'DNP' SHOULD NOT BE POPULATED.

ASSEMBLY VARIANT: 001

M2 Board Dimensions

PCB VIEWED FROM TOP SIDE	BOARD #:	SU601308	REV:	B	SUN REV:	Not In VersionControl
	TID #:	.TID				
PLOT NAME =	Top LayerAssembly Drawing	GENERATED :	2/24/2017	7:14:16 PM	TEXAS INSTRUMENTS	

12.00in



12.00in

COMPONENTS MARKED "DNP" SHOULD NOT BE POPULATED.

ASSEMBLY VARIANT: 001



Legend for assembly variants showing a 2x4 grid of squares with different patterns.

PCB VIEWED FROM BOTTOM SIDE	BOARD #: SU601308	REV: B	SUN REV: Not In VersionControl
	MS Board Orientation		
PLOT NAME = Bottom LayerAssembly Drawing	GENERATED : 2/24/2017 7:14:17 PM		TEXAS INSTRUMENTS