



BLILEY ELECTRIC COMPANY

2545 We Grandv ew B vd
Erie, PA 16506

Phone: (814) 838-3571 Web: www.bliley.com
FAX (814) 833 2712 E Ma nfo@b ey om

This is our interpretation of your specification. If this does not meet your requirements in any way, please contact us as soon as possible.

BECO P/N: NV26R891

Frequency: 100 MHz

Output: +3 dBm min into 50 Ω
+7 dBm typical

Harmonics: -25 dBc min

Spurious: -60 dBc min

Operating Temp Range: -40°C to +65°C

Temp Stability and Aging: ± 5.0 ppm max for 17 years
± 5 x 10⁻⁷ typical for temp stability

Supply Voltage: +12 Vdc ± 5%

Current: 350 mA max at turn-on

Power consumption: 4.2 Watts max at turn-on
1.2 Watts typical stabilized at +25°C

Voltage Control: ± 3 x 10⁻⁶ typical for 0 to +5 volts Negative Slope

Phase Noise: -115 dBc 100 Hz
-139 dBc 1 KHz
-151 dBc 10 KHz
-154 dBc 100 KHz

Case Size: Per attached outline drawing

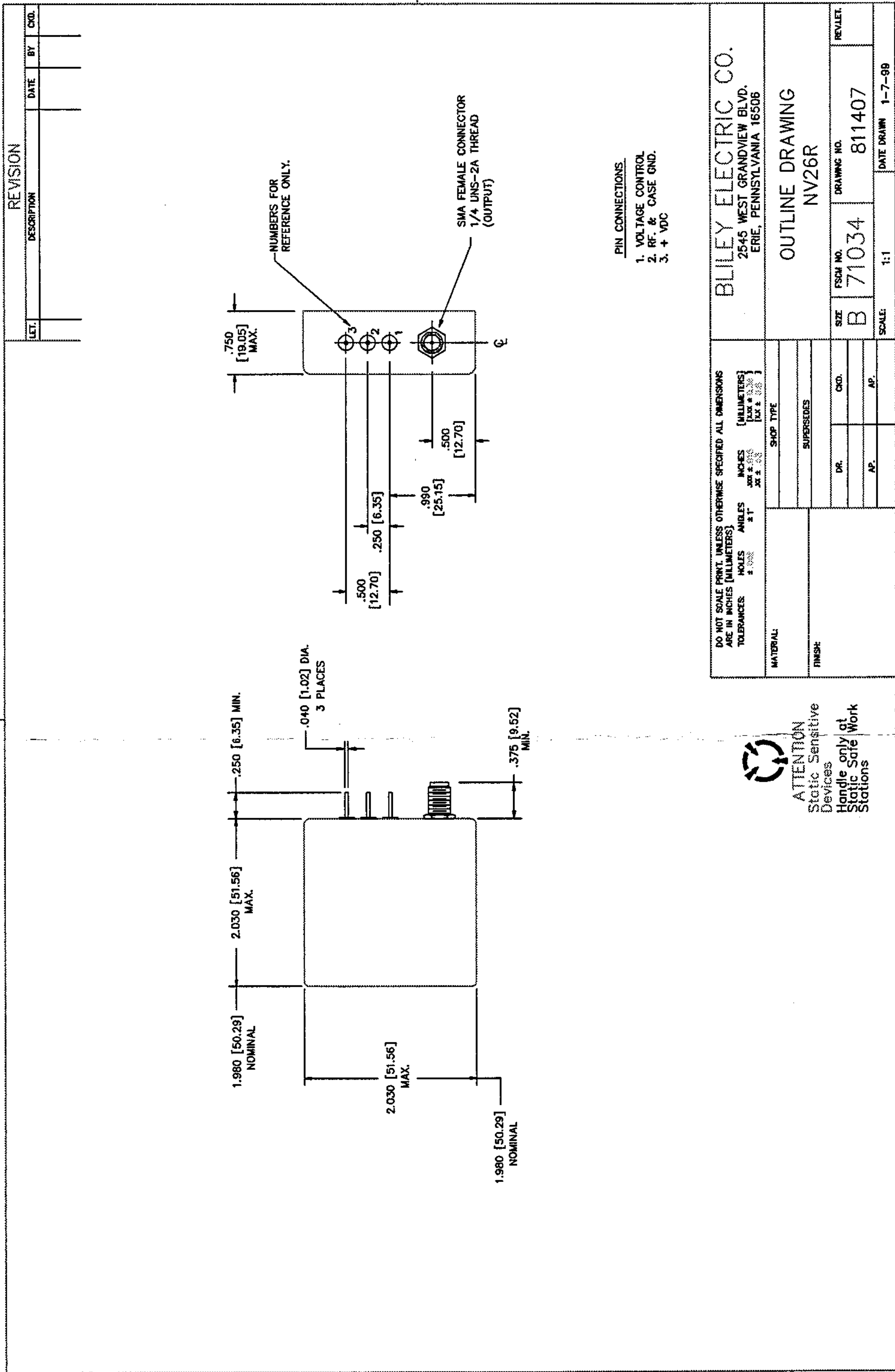
Date	Rev.	Revised per	Initials
4-14-99	A	Output was 0 dBm min into 50Ω +7 DBm typical; Voltage Ctrl. was ±3 x 10 ⁻⁷ typical for 0 to +5 volts Neg. Slope; BECO P/N was NV26R	DRS

	Initials	Date
Mechanical Eng:	J. Morell	1-7-99
Design Eng:	D. Smith	1-7-99
Release Date: 1-7-99		

Specification No.	Revision	Sheet #
6092	A	1 of 2

UNCONTROLLED -- ISSUED February 7, 2001

USER OF THIS DOCUMENT IS RESPONSIBLE FOR ENSURING THEY ARE USING THE CORRECT REVISION LEVEL



NOT TO SCALE

Specification No.	Revision	Sheet #
6092	A	2 of 2

UNCONTROLLED -- ISSUED February 7, 2001

USER OF THIS DOCUMENT IS RESPONSIBLE FOR ENSURING THEY ARE USING THE CORRECT REVISION LEVEL