

TI Dual-Mode Bluetooth® Stack on MSP432™ MCUs

TI's dual-mode *Bluetooth*® stack on MSP432™ microcontroller (CC256XMS32BTBLESW) software for Bluetooth and Bluetooth low energy enables TI's MSP432 MCU and is comprised of single-mode and dual-mode offerings implementing the Bluetooth 4.0 specification. The Bluetooth stack is fully qualified (QDID 69887 and QDID 69886), provides simple command line sample applications to speed development, and has MFI capability upon request.

For a complete evaluation solution, the CC256XMS32BTBLESW device works directly with the MSP-EXP432P401R LaunchPad™ Development Kit. The stack for the MSP432 MCU is certified and royalty-free (CC256XMS32BTBLESW).

The software works with the dual-mode Bluetooth CC2564 module with integrated antenna BoosterPack™ Plug-in Module (BOOST-CC2564MODA), which provide a complete Bluetooth BR/EDR/low energy HCI solution that reduces design effort and ensures a faster time to market. The dual-mode Bluetooth BoosterPack plug-in module includes TI's seventh-generation Bluetooth core and provides a product-proven solution that is Bluetooth-4.1 compliant. The device provides one of the best Bluetooth RF performances with a transmit power and receive sensitivity that provides a range of about 2x compared to other Bluetooth low energy-only solutions. TI's power-management hardware and software algorithms provide significant power savings in commonly used Bluetooth BR/EDR/low energy modes of operation.

Contents

1	Features.....	2
2	Sample Application Overview	3
3	Requirements	4
4	Hardware Setup.....	5
5	Software Setup.....	8
6	Sample Applications	19

Trademarks

MSP432, LaunchPad, BoosterPack, SimpleLink, Code Composer Studio are trademarks of Texas Instruments.

Keil, Arm, μVision are registered trademarks of Arm Limited (or its subsidiaries).

Bluetooth is a registered trademark of Bluetooth SIG.

IAR Embedded Workbench is a registered trademark of IAR System AB.

Wi-Fi is a registered trademark of Wi-Fi Alliance.

All other trademarks are the property of their respective owners.

1 Features

Features of the device include the following:

- Supports dual-mode Bluetooth 4.0—Bluetooth certified and royalty free
- Offers fully qualified Bluetooth stack (QDID 69887 and QDID 69886)
- Offers full-thread safety
- Supports nonthreaded (no OS) environment
- Offers fully documented API interface
- Works with any MSP432 MCU
- Includes available sample applications for the MSP-EXP432P401R LaunchPad development kit with the support of the BOOST-CC256XMODA
- Supports CCS, Keil®, and IAR IDEs

1.1 *Classic Bluetooth Profiles Available*

- Advanced Audio Distribution Profile (A2DP 1.2): A3DP Implementation
- Audio and Video Transport Protocols (AVDTP 1.2)
- Audio and Video Remote Control Profile (AVRCP 1.3)
- Generic Access Profile (GAP)
- Headset Profile (HSP 1.2)
- Hands Free Profile (HFP 1.6)
- Human Interface Device Profile (HID 1.0)
- Message Access Profile (MAP 1.0)
- Phonebook Access Profile (PBAP 1.0)
- RFCOMM Protocol (RFCOMM)
- Service Discovery Profile (SDP)
- Serial Port Profile (SPP)

1.2 *Bluetooth low energy Profiles Available*

- Alert Notification Service (ANS 1.0)
- Battery Service (BAS 1.0)
- Device Information Service (DIS 1.0)
- Find Me Profile (FMP 1.0)
- Generic Access Profile Service (GAPS 1.0)
- Generic Attribute Profile (GATT 1.0)
- Health Thermometer Service (HTS 1.0)
- Heart Rate Service (HRS 1.0)
- Human Interface Device Service (HIDS 1.0)
- Immediate Alert Service (IAS 1.0)
- Link Loss Service (LLS 1.0)
- Phone Alert State Service (PASS 1.0)
- Proximity Profile (PXP 1.0)
- TX Power Service (TPS 1.0)

1.3 *MFi Support*

iAP Protocol (iAP 1/iAP 2)

2 Sample Application Overview

This demonstration lets users evaluate TI's CC256x Bluetooth device with the MSP-EXP432P401R LaunchPad development kit. The MSP-EXP432P401R Bluetooth sample applications are provided to enable a rich out-of-box experience for the user. These applications let the user use a console to send Bluetooth commands, set up a Bluetooth device to accept connections, connect to a remote Bluetooth device, and communicate over Bluetooth. One sample application for each profile is supported with simple command line sample applications to speed development. [Figure 1](#) shows an overview of the demonstration example.

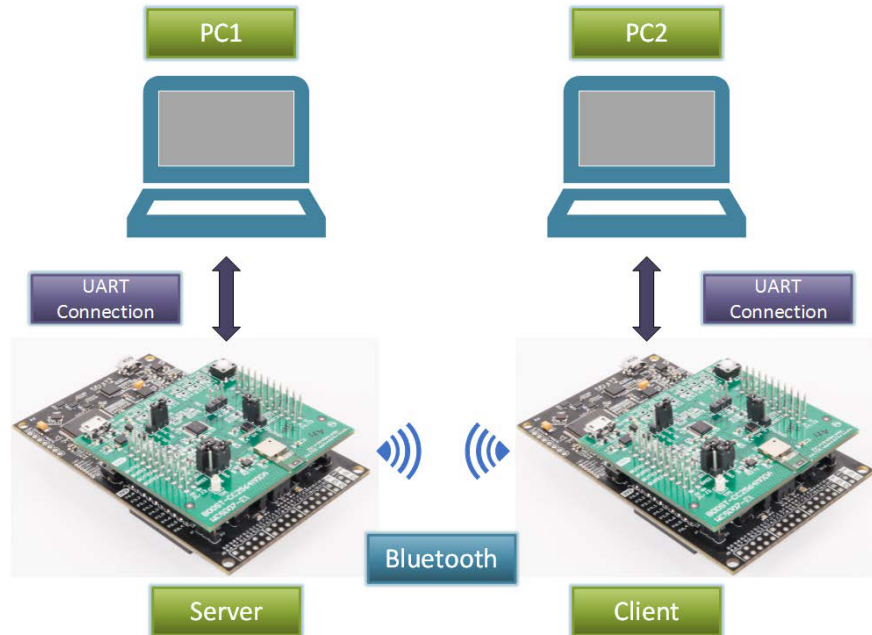


Figure 1. Demonstration Example Overview

3 Requirements

The following hardware and software tools are required for a complete evaluation:

Hardware

- One MSP432 LaunchPad Development Kit
 - [MSP-EXP432P401R](#)
- One Dual-Mode Bluetooth CC2564 Module With Integrated Antenna BoosterPack Plug-in Module
 - [BOOST-CC2564MODA](#)
- One SimpleLink Wi-Fi® CC3200 Audio BoosterPack (optional)—for audio and voice sample applications
 - [CC3200AUDBOOST](#)
- One Advanced Emulation BoosterPack for SimpleLink™ Wi-Fi CC3100 BoosterPack (optional)—for debugging
 - [CC31XXEMUBOOST](#)

Software

- TI Dual-Mode Bluetooth stack
 - On MSP432 MCUs: [CC256XMS32BTBLESW](#)
- Recommended IDE versions for testing
 - [Code Composer Studio™ Integrated Development Environment \(CCS 6.1.1.00022\)](#)
 - [IAR Embedded Workbench® v7.3](#)
 - [Arm® Keil® µVision® IDE v5.17.0.0](#)

Figure 2 shows the hardware requirement combinations.

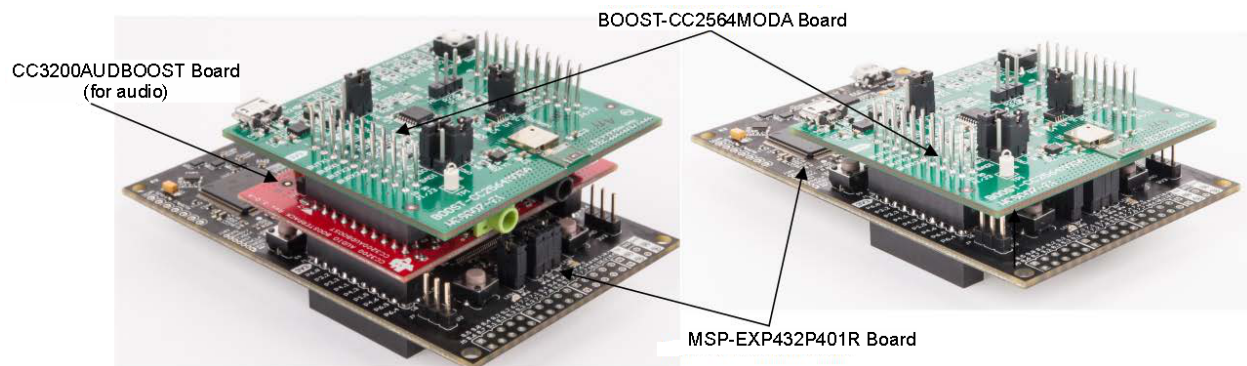


Figure 2. Hardware Requirement Combinations

4 Hardware Setup

Using TI's dual-mode Bluetooth CC2564 module with an integrated antenna BoosterPack plug-in module (BOOST-CC2564MODA), the MSP432 MCU LaunchPad development kit (MSP-EXP432P401R) can evaluate both classic and Bluetooth low energy capabilities with the TI dual-mode Bluetooth stack on MSP432 MCUs, with the optional support of the TI BoosterPack plug-in module for audio and voice (CC3200AUDBOOST) or debugging (CC31XXEMUBOOST) developers.

4.1 Setting Up the Hardware

To set up the hardware, do as follows:

1. Fit the dual-mode Bluetooth BoosterPack plug-in module (BOOST-CC2564MODA) onto the MSP432 LaunchPad development kit.

NOTE: The boards must be set to their default settings. For more information on the jumper positions and default settings for the BOOST-CC2564MODA, see the [Dual-Mode Bluetooth CC2564 Module With Integrated Antenna BoosterPack Plug-in Module User 's Guide](#) and the [Dual-Mode Bluetooth CC2564 Module With Integrated Antenna BoosterPack Plug-in Module Quick Start Guide](#). For the jumper position and configurations for the MSP-EXP432P401R development kit, see the [MSP432 LaunchPad Development Kit User's Guide](#).

Ensure the connectors are aligned ([Figure 3](#) shows the MSP-EXP432P401R and BOOST-CC2564MODA examples).

To use the CC3200AUDBOOST device for audio and voice applications (optional), do as follows:

2. Stack the BOOST-CC2564MODA onto the CC3200AUDBOOST.
3. Fit the CC3200AUDBOOST onto the MSP-EXP432P401R LaunchPad development kit (boards must be set to their default configuration, see [Table 1](#)).

Table 1. CC3200AUDBOOST Ports for Audio Sample Applications

Sample Applications	CC3200AUDBOOST
A3DP Demo_SRC	LINE_IN (J3)
A3DP Demo_SNK	Line_out (j4)
HFP Demo_AG	Mic (U6) LINE_OUT (J4)
HFP Demo_HF	Mic (U6) LINE_OUT (J4)
HSP Demo	Mic (U6) LINE_OUT (J4)

NOTE: For the default settings for the CC3200AUDBOOST device, see the [CC3200 SimpleLink Wi-Fi and IoT Solution, a SingleChip Wireless MCU – Audio BoosterPack User's Guide](#). Ensure the connectors are aligned properly ([Figure 4](#) shows the MSP-EXP432P401R with BOOST-CC2564MODA and CC3200AUDBOOST examples).

For the CC31XXEMUBOOST BoosterPack plug-in module for debugging purposes (optional), do as follows:

4. Move nSHUTD to nS2 on the BOOST-CC2564MODA jumper J5.
5. Add a jumper to TX_DBG on J8.
6. Ensure that J22 and J4 are DNI.
7. Populate J1 and J2.
8. Stack the BOOST-CC2564MODA onto the CC31XXEMUBOOST.
9. Fit the CC31XXEMUBOOST onto the MSP-EXP432P401R LaunchPad development kit.

For the CC31XXEMUBOOST hardware configuration, see the [CC3100 SimpleLink Wi-Fi and IoT Solution BoosterPack Hardware User's Guide](#). Figure 5 shows examples of the BOOST-CC2564MODA and CC31XXEMUBOOST.

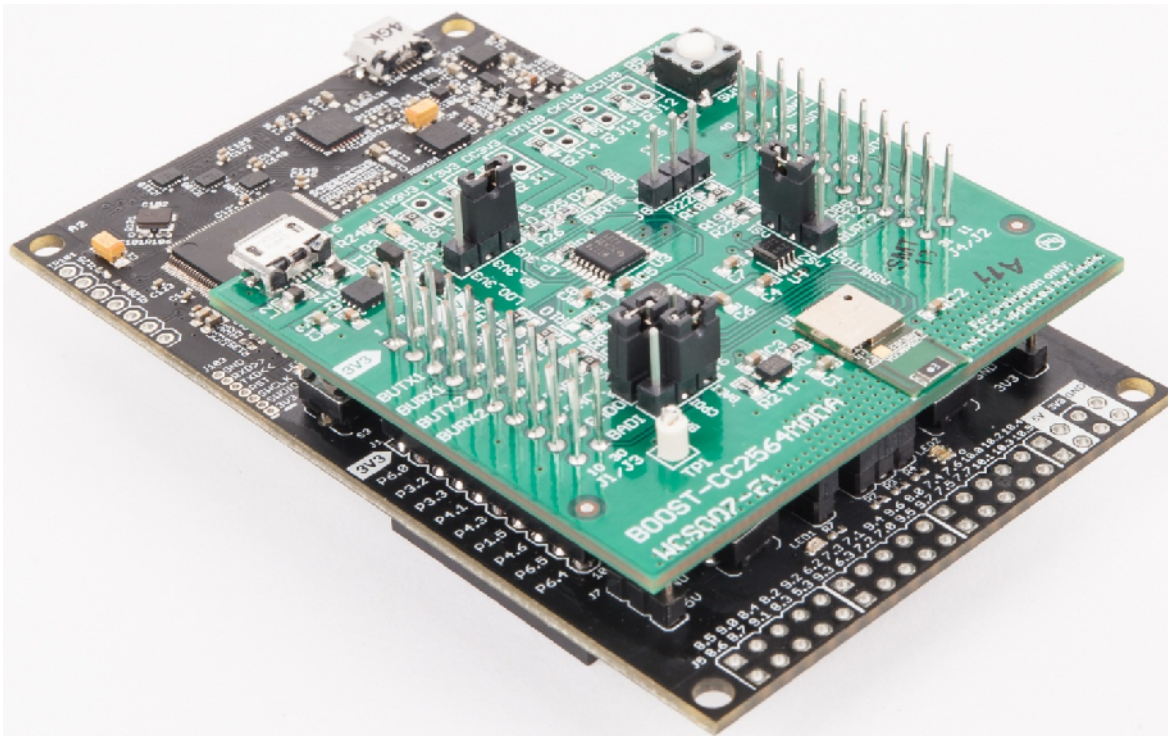


Figure 3. MSP-EXP432P401R and BOOST-CC2564MODA Combination

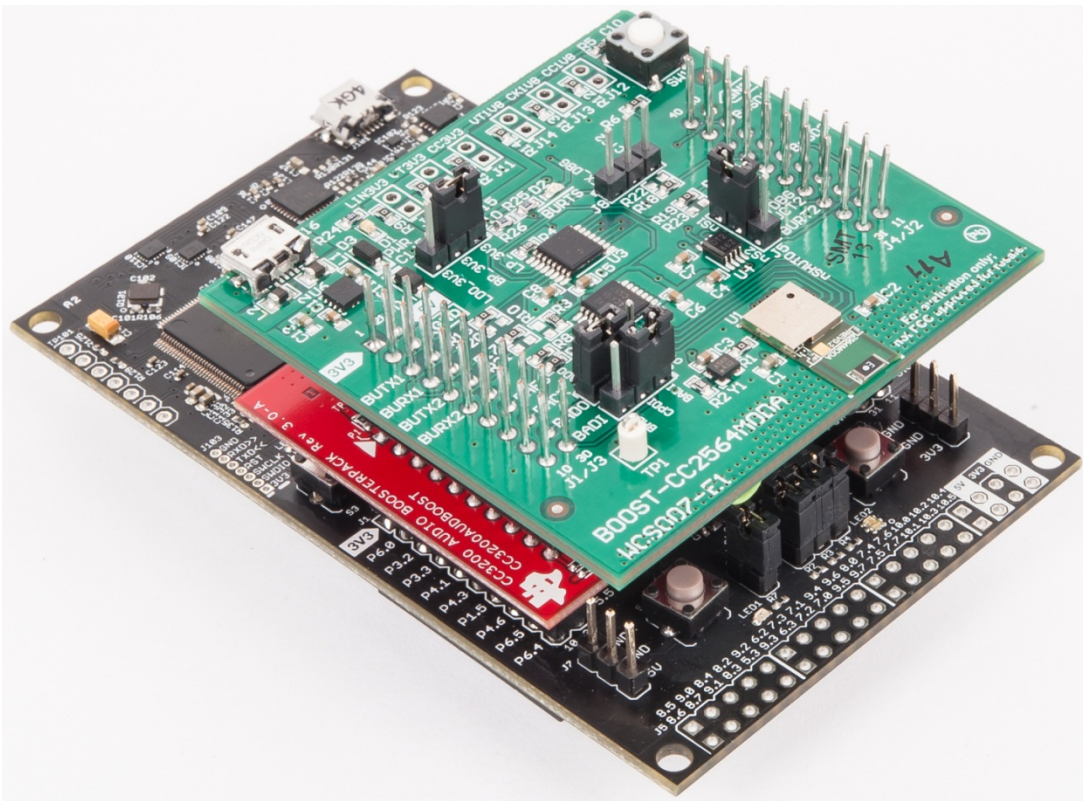


Figure 4. MSP-EXP432P401R, BOOST-CC2564MODA, and CC3200AUDBOOST Combination

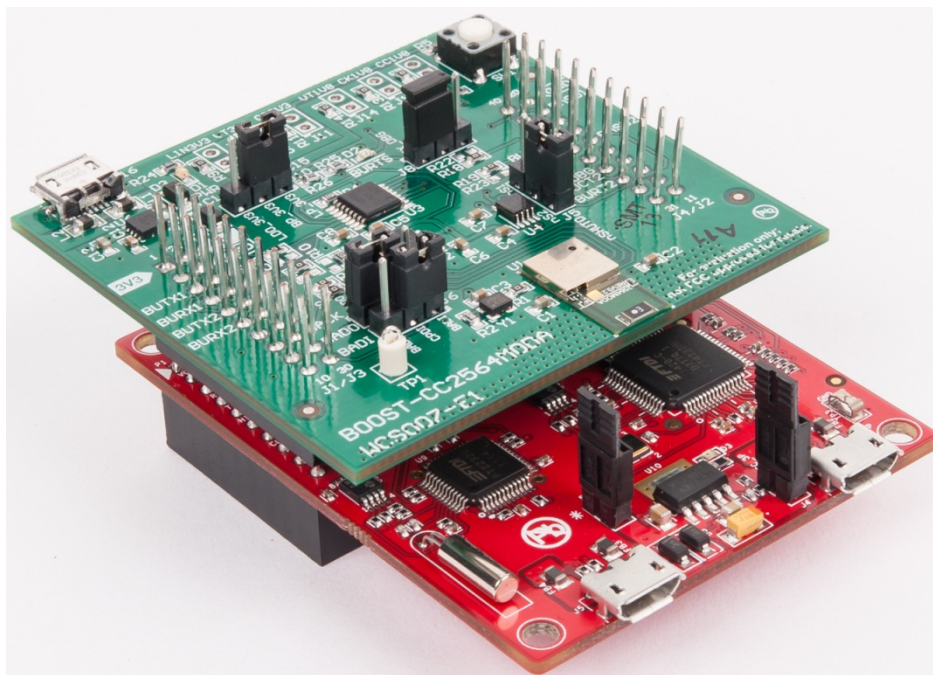


Figure 5. BOOST-CC2564MODA and CC31XXEMUBOOST Combination

5 Software Setup

5.1 Downloading and Installing

To download and install the [Bluetooth software development kit \(SDK\)](#), do as follows:

NOTE: A TI login is required to download the SDK.

1. Create a TI login (if necessary).
2. Complete the export approval form.

NOTE: A request is submitted to TI for approval. When the request is approved, a confirmation appears on the next page with a link to download the software.

3. Click *Download* to start the download.
4. Run the setup file (for example, CC256XMS32BTBLESW-v4.0.3.0.1.0-Setup.exe).
5. Accept the TI *Bluetooth Stack Clickwrap License Agreement*.

NOTE: The SDK installs to *C:\TI\Connectivity\CC256X BT\CC256x MSP432 Bluetopia SDK*.

6. Navigate to the SDK through Start→ Programs→ Texas Instruments→ C256X BT→ CC256X MSP432 Bluetopia SDK v4.0.3.0.1.0 to access the file.

5.2 Building and Flashing the Bluetooth Code (MSP-EXP432P401R)

Sample applications are available for CCS, IAR, and Keil. To set up the sample applications on each IDE version, do as follows:

CCS

1. Navigate to the workspace through Project→ Import CCS Projects.
2. Open *C:\TI\Connectivity\CC256X BT\CC256x MSP432 Bluetopia SDK\4.0.3.0\Samples*.
3. Select the demonstration to load onto the device (for this example, the *SPPDemo*).
4. Navigate to SPPDemo→ CCS.

NOTE: The CCS SPPDemo project opens (see [Figure 6](#)).

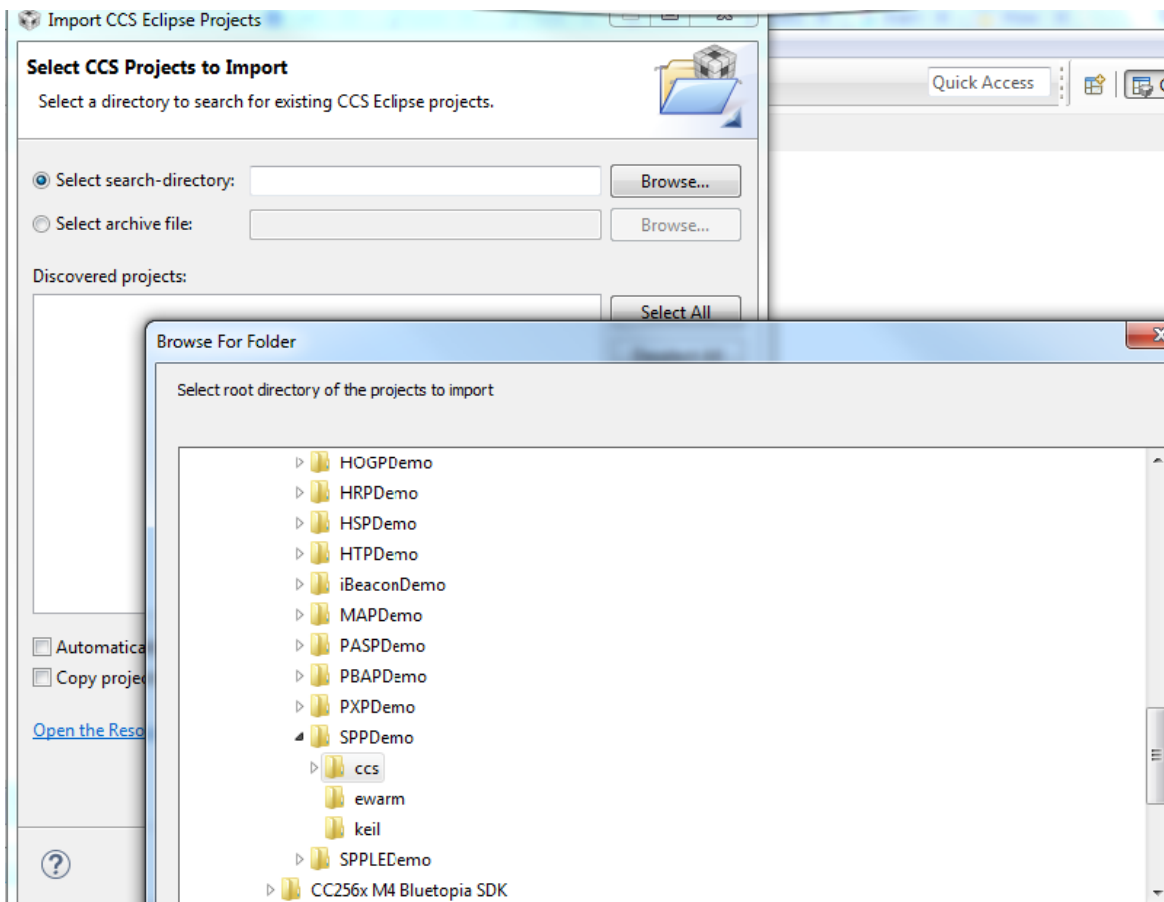


Figure 6. CCS Project Folder

- Open Project / Properties / General, and ensure that the “Manage the project’s target-configuration automatically” checkbox is set. See [Figure 7](#).

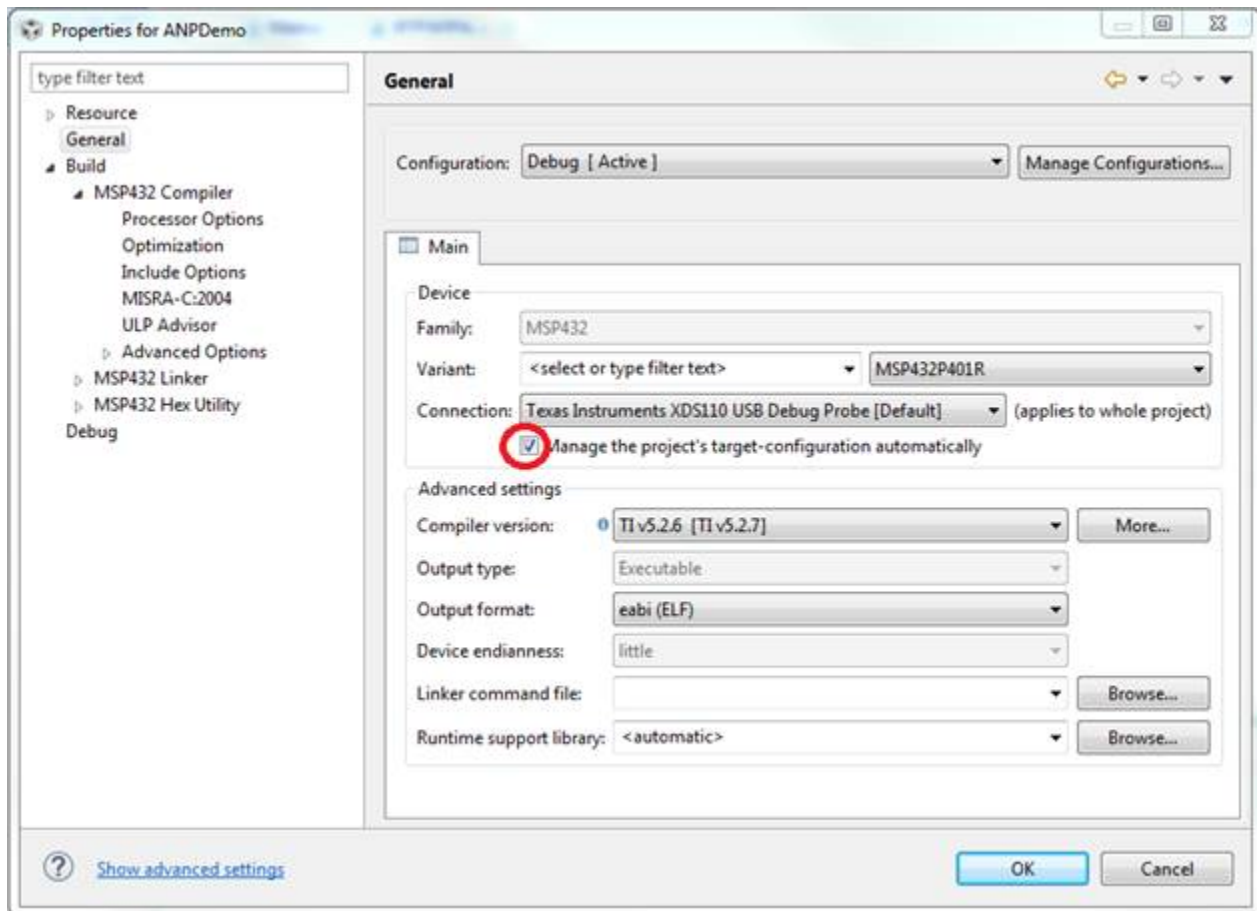


Figure 7. Project Properties / General

- Ensure the MSP432 device is connected.

7. Select the Debug button from the toolbar (see [Figure 8](#)).

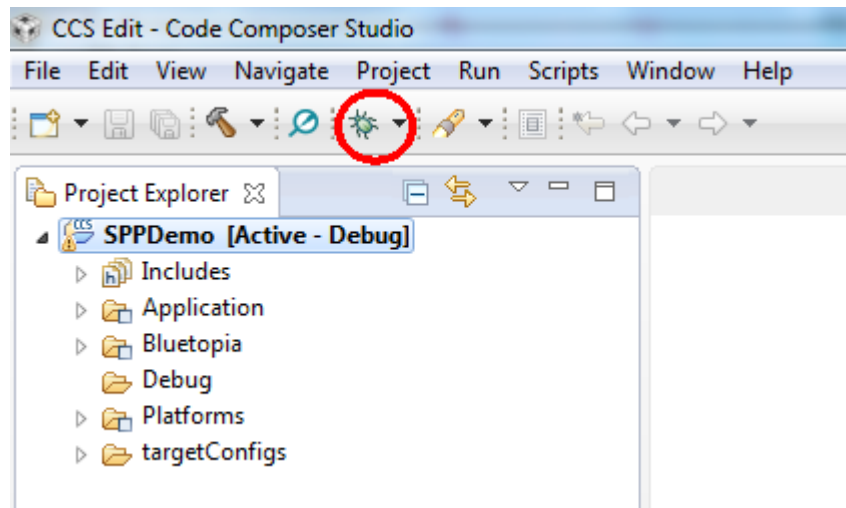


Figure 8. Debug

NOTE: Let the IDE debug and load the software onto the device. This process may take 5 to 10 minutes. After the IDE loads the software, the it is ready to use.

To begin using the profile, do as follows:

Press the play and resume button on the CCS toolbar (see [Figure 9](#)).

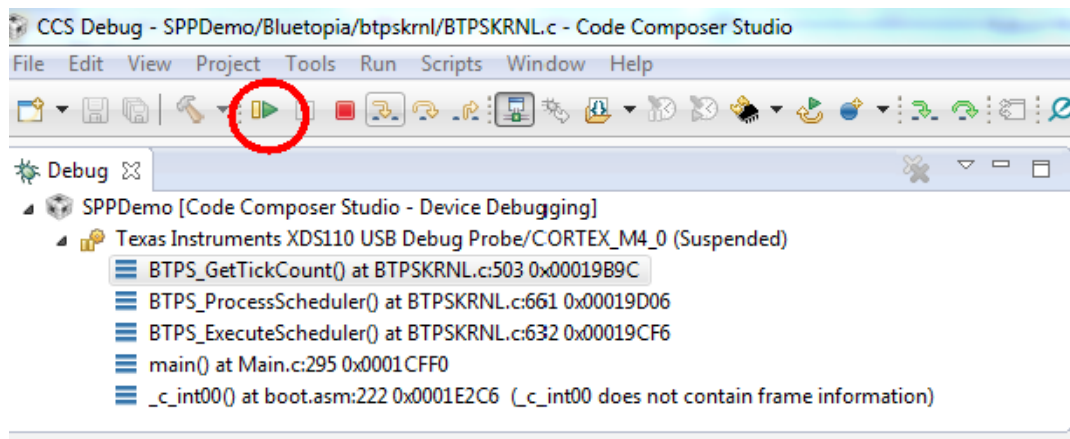


Figure 9. Play and Resume Button

IAR

To open the workspace, do as follows:

1. Navigate to *C:\TI\Connectivity\CC256X BT\CC256x MSP432 Bluetopia SDK\4.0.3.0\Samples*.
2. Select the demonstration to load onto the device (for this example, the *SPPDemo*).
3. Navigate to *SPPDemo*→ *EWARM*.
4. Select *SPPDemo.eww*.

NOTE: The IAR IDE opens.

5. Select either the *Debug* or *Release* configuration from the drop-down menu (in this example, select *Debug*, see [Figure 10](#)).

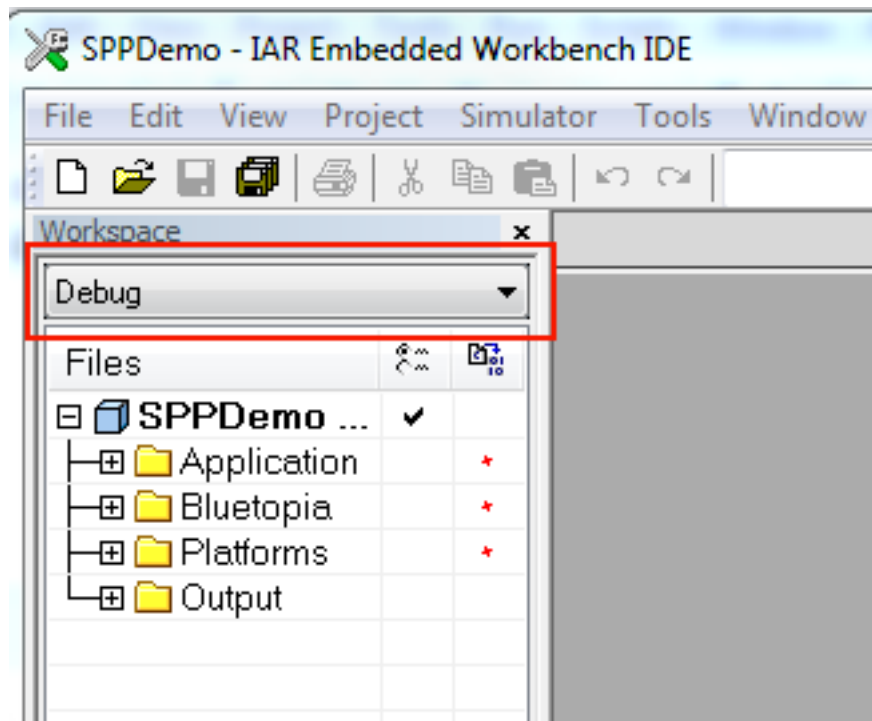


Figure 10. Debug Workspace

6. Ensure that the MSP-EXP432P401R LaunchPad development kit is connected.

7. Select *Download and Debug* from the *Project* tab or the play icon (see [Figure 11](#)).

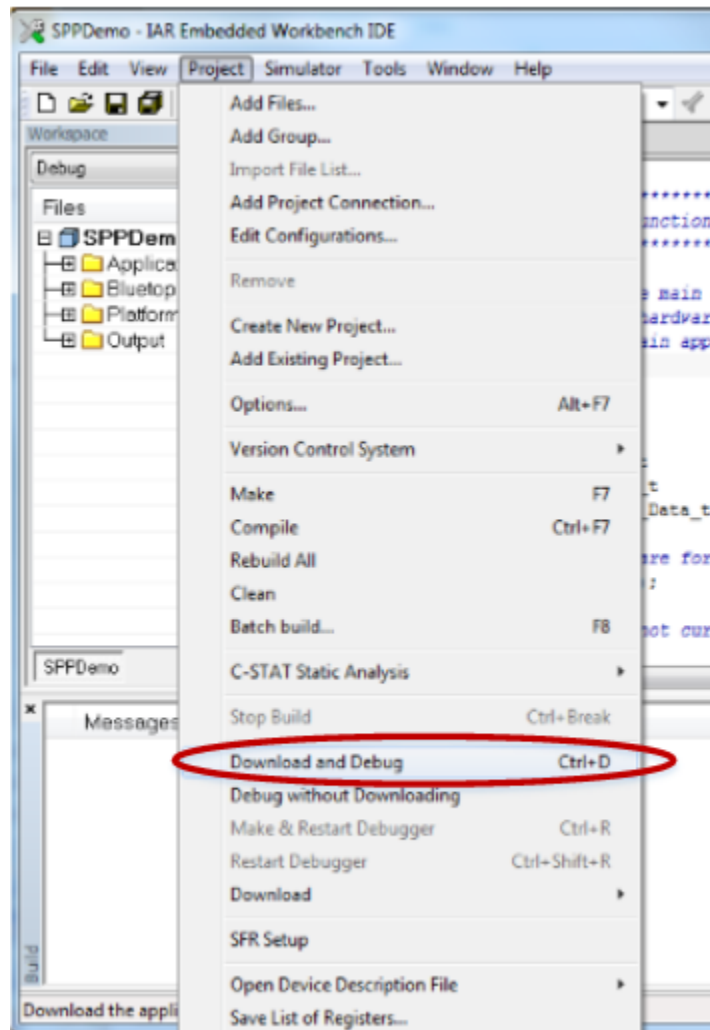


Figure 11. Download and Debug

NOTE: Let the IDE debug and load the software onto the device. This process may take 5 to 10 minutes.

8. Click the red X in the IAR toolbar to stop debugging (see Figure 12).

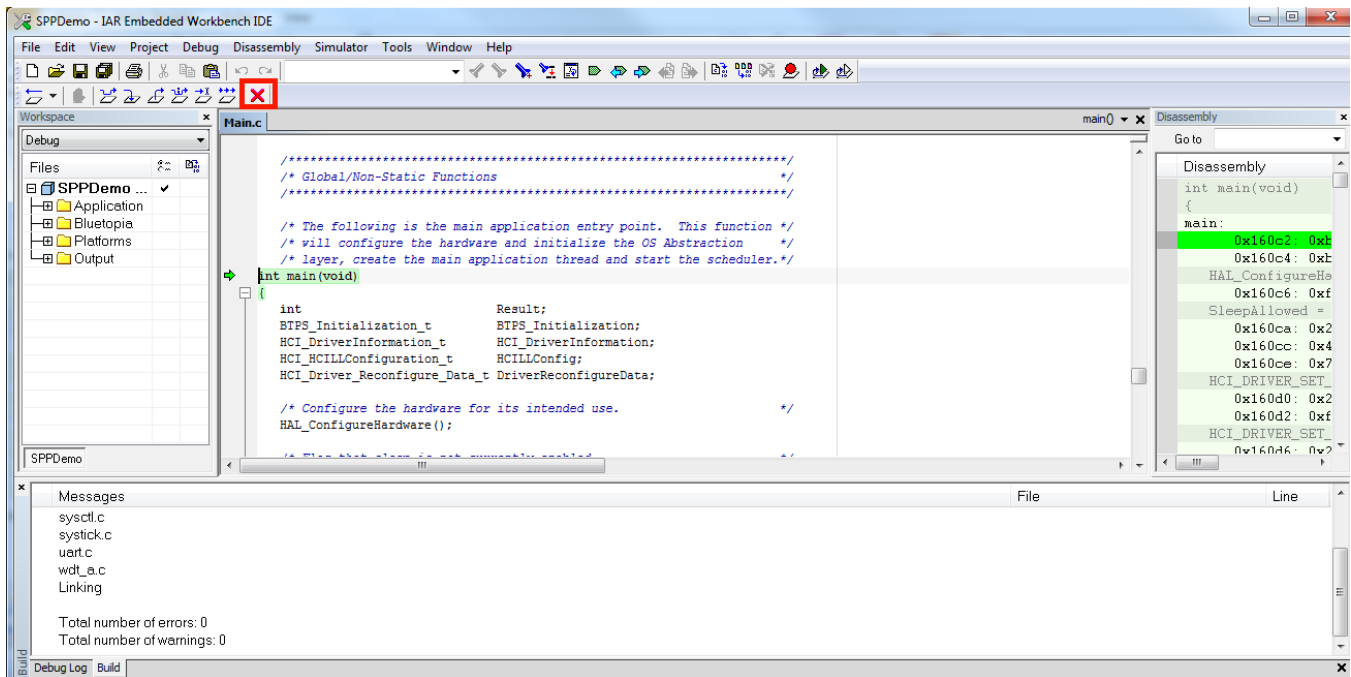


Figure 12. Red X

To begin using the profile, do as follows:

Press the Go button in IAR (see Figure 13).



Figure 13. The Go Button

Keil

To open the workspace, do as follows:

1. Navigate to *C:\TI\Connectivity\CC256X BT\CC256x MSP432 Bluetopia SDK\4.0.3.0\Samples*.
2. Select the demonstration to load on the device (for this example, use *SPPDemo*).
3. Navigate to *SPPDemo*→ *keil* in the samples list.
4. Select *SPPDemo.uvprojx*.

NOTE: Keil μ Vision5 opens.

5. Select either the *Debug* or *Release* configuration from the drop-down menu (in this example, select *Debug*, see [Figure 14](#)).

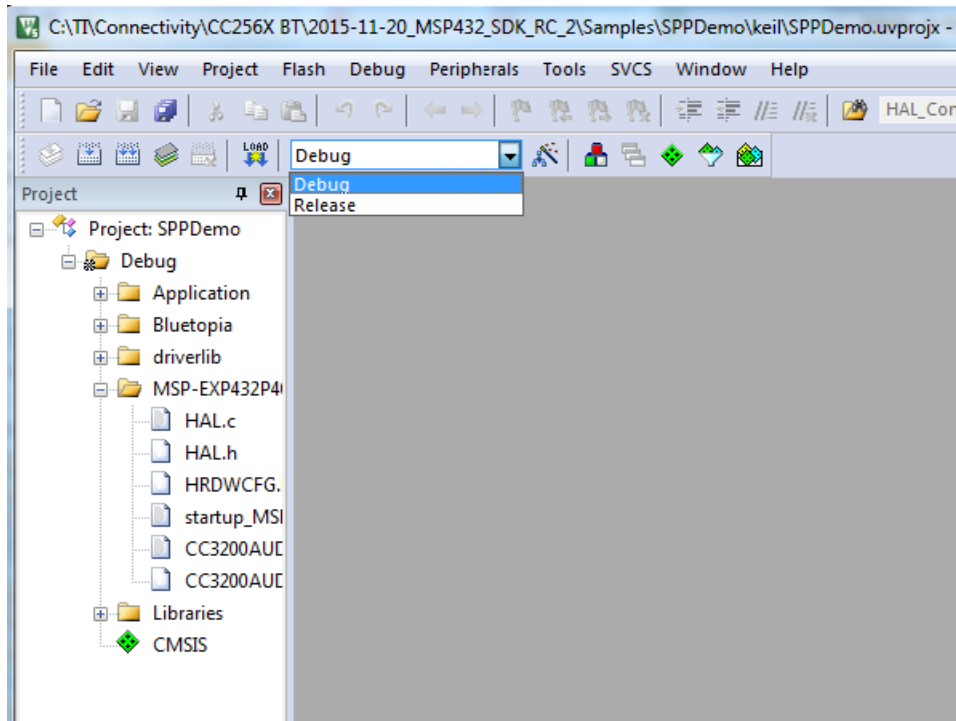


Figure 14. Configurations

To build the code, do as follows:

1. Navigate to Project→ Build Target in the program menu (see [Figure 15](#)).

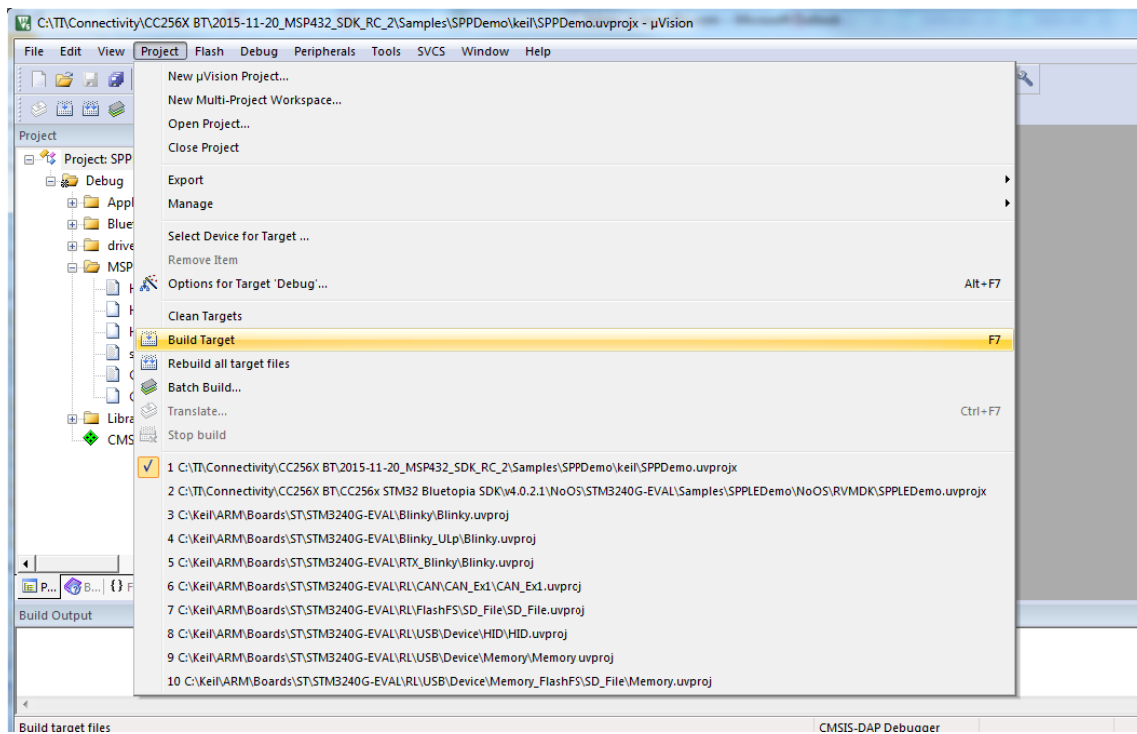


Figure 15. Build Project→ Target

NOTE: After a few minutes, the build process finishes and should build a .axf file. Each time the configuration is changed, a new .axf file must be built.

2. Choose from the following two options.
 - A. For Debug Mode Only, do as follows:
 - i. Select *Start/Stop Debug Session* to start loading the profile on the MSP432 device (see [Figure 16](#)).

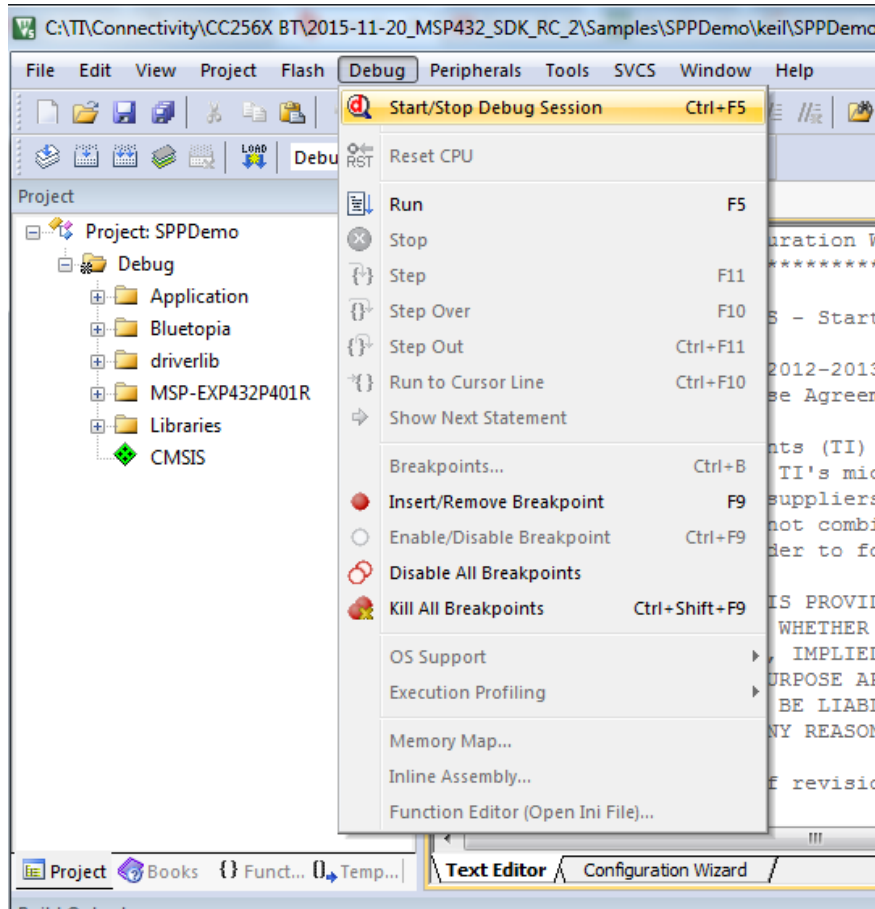


Figure 16. Start/Stop Debug Session

NOTE: The debug session finishes in a few minutes.

- ii. Stop the debugging session from the *Debug* menu.

NOTE: The profile loads on the MSP-EXP432P401R LaunchPad development kit.

- iii. Unplug the device.
- iv. Plug in the device.

- B. For Release and Debug Modes:
- i. Press the LOAD button to start loading the profile on the MSP432 device (see [Figure 17](#)).

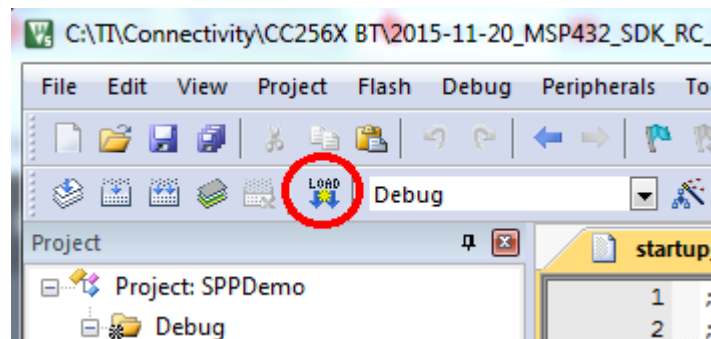


Figure 17. LOAD Button

NOTE: The profile finishes in a few minutes. The profile loads on the MSP-EXP432P401R LaunchPad development kit.

- ii. Unplug the device.
- iii. Plug in the device.

6 Sample Applications

TI dual-mode Bluetooth stack on MSP432 MCUs includes sample applications directory available with source code which demonstrates the use of the TI's Bluetooth stack. These sample applications are a simple, command line applications that display a list of available commands. [Table 1](#) lists the specific audio connectors for the audio sample applications. The parameters for this port are as follows:

- Baud: 115,200
- Data Bits: 8
- Parity: None
- Stop Bits: 1
- Flow Control: None

[Table 2](#) lists available profiles for Bluetooth SDK.

Table 2. Available Profiles for Bluetooth SDK

Profile	Role	NoOS	Platforms
A3DP Demo_SNK	Sink Controller	CCS IAR Keil	MSP-EXP432P401R BOOST-CC2564MODA CC3200AUBOOST
A3DP Demo_SRC	Source Target	CCS IAR Keil	MSP-EXP432P401R BOOST-CC2564MODA CC3200AUBOOST
ANP Demo	Server Client	CCS IAR Keil	MSP-EXP432P401R BOOST-CC2564MODA
FMP Demo	Target Locator	CCS IAR Keil	MSP-EXP432P401R BOOST-CC2564MODA
HFP Demo_AG	Audio Gateway	CCS IAR Keil	MSP-EXP432P401R BOOST-CC2564MODA CC3200AUBOOST
HFP Demo_HF	Audio Gateway Hands-Free Unit	CCS IAR Keil	MSP-EXP432P401R BOOST-CC2564MODA CC3200AUBOOST
HID Demo	Host Device	CCS IAR Keil	MSP-EXP432P401R BOOST-CC2564MODA
HOGP Demo	Host Device	CCS IAR Keil	MSP-EXP432P401R BOOST-CC2564MODA
HRP Demo	Collector Sensor	CCS IAR Keil	MSP-EXP432P401R BOOST-CC2564MODA
HSP Demo	Audio Gateway Headset	CCS IAR Keil	MSP-EXP432P401R BOOST-CC2564MODA CC3200AUBOOST
HTP Demo	Collector Thermometer	CCS IAR Keil	MSP-EXP432P401R BOOST-CC2564MODA
iBeacon Demo	Server Client	CCS IAR Keil	MSP-EXP432P401R BOOST-CC2564MODA
MAP Demo	Server Client	CCS IAR Keil	MSP-EXP432P401R BOOST-CC2564MODA
PASP Demo	Server Client	CCS IAR Keil	MSP-EXP432P401R BOOST-CC2564MODA

Table 2. Available Profiles for Bluetooth SDK (continued)

Profile	Role	NoOS	Platforms
PBAP Demo	Server Client	CCS IAR Keil	MSP-EXP432P401R BOOST-CC2564MODA
PXP Demo	Monitor Reporter	CCS IAR Keil	MSP-EXP432P401R BOOST-CC2564MODA
SPP Demo	Device A Device B	CCS IAR Keil	MSP-EXP432P401R BOOST-CC2564MODA
SPPLE Demo	Server Client	CCS IAR Keil	MSP-EXP432P401R BOOST-CC2564MODA

6.1 Classic Bluetooth Sample Applications

A3DP Sink Demo

- The assisted advanced audio distribution profile (A3DP) shows how to send stereo audio over Bluetooth.
- For a step-by-step demonstration of how to run this application for the sink role, visit the [A3DP demo sink wiki](#).

A3DP Source Demo

- The assisted advanced audio distribution profile shows how to send stereo audio over Bluetooth.
- For a step-by-step demonstration of how to run this audio gateway application for the source role, visit the [A3DP demo source wiki](#).

HFP Demo

- The hands-free profile (HFP) lets the user demonstrate the use of hands-free profile on embedded device. The HFP is used to connect a headset or speaker phone with a mobile device to provide remote control and voice connections.
- The HFP supports two roles: hands free and audio gateway.
- For a step-by-step demonstration of how to run the audio gateway application, visit the [HFP AG demo application wiki](#).
- For a step-by-step demonstration of how to run the hands-free application, visit the [HFP HG Demo application wiki](#).

HID Demo

- The human interface device (HID) enables a host to connect and control a HID device.
- For a step-by-step demonstration of how to run this application, visit the [HID demo wiki](#).

HSP Demo

- The headset profile (HSP) lets the user demonstrate the use of HSP on embedded device. The HSP is used to connect a headset or speaker phone with a mobile device or to connect an audio gateway with a headset device to provide basic control and voice connections.
- For a step-by-step demonstration of how to run this application, visit the [HSP demo wiki](#).

MAP Demo

- The MAP demo lets the user exchange message objects over Bluetooth.
- For a step-by-step demonstration of how to run this application, visit the [MAP demo application wiki](#).

PBAP Demo

- The PBAP demo lets the user exchange phonebook objects over Bluetooth.
- For a step-by-step demonstration of how to run this application, visit the [PBAP demo application wiki](#).

SPP Demo

- This application shows how to use the SPP module and how to handle the different callback events. The application can be used to interface with a remote SPP client or server.
- For a step-by-step demonstration of how to run this application, visit the [SPP demo application wiki](#).

6.2 *Classic Bluetooth Plus Bluetooth low energy Sample Applications*

SPP Plus SPPLE Demo

- This application shows how to use low energy (LE) and the GATT profile. This sample emulates using SPP over LE using the GATT profile. This sample acts as an LE master and an LE slave.
- This application also shows how to use the SPP module and how to handle the different SPP callback events. The application acts as either an SPP server or an SPP client and exposes the same command set for SPP as the SPPDemo.
- For a step-by-step demonstration of how to run this application, visit the [SPP plus SPPLE demo wiki](#).

6.3 *Bluetooth low energy Sample Applications*

ANP Demo

- This application shows how to use LE and the GATT profile. This sample implements the alert notification profile (ANP) using the GATT profile. This sample acts as an LE master and an LE slave.
- For a step-by-step demonstration of how to run this application, visit the [ANP demo wiki](#).

iBeacon Demo

- The iBeacon profile is used to provide a different type of location-based information and services. There are two roles defined in this profile: a server and a client. The server transmits a user-defined message, which is received by any client that is in range. The received iBeacon message can trigger different behaviors.
- This application lets the user advertise specific Bluetooth low energy data that can be read by an iBeacon scanner (client).
- For a step-by-step demonstration of how to run this application, visit the [iBeacon demo wiki](#).

HRP Demonstration

- This application shows how to use LE and the GATT profile. This sample implements the heart rate monitoring profile (HRP) using the GATT profile. This sample acts as an LE master and an LE slave.
- For a step-by-step demonstration of how to run this application, visit the [HRP demo wiki](#).

HTP Demonstration

- This application shows how to use LE and the GATT profile. This sample implements the health thermometer profile (HTP) using the GATT profile. This sample acts as an LE master and an LE slave.
- For a step-by-step demonstration of how to run this application, visit the [HTP demo wiki](#).

PASP Demonstration

- This application shows how to use LE and the GATT profile. This sample implements the phone alert status profile (PASP) using the GATT profile. This sample acts as an LE master and an LE slave.
- For a step-by-step demonstration of how to run this application, visit the [PASP demo wiki](#).

HOGP Demonstration

- This application shows how to use LE and the GATT profile. This sample implements the HID using the GATT profile.
- For a step-by-step demonstration of how to run this application, visit the [HOGP demo wiki](#).

PXP Demonstration

- This application shows how to use LE and the GATT profile. This sample implements the proximity profile (PXP) using the GATT profile. This sample acts as an LE master and an LE slave.
- For a step-by-step demonstration of how to run this application, visit the [PXP demo wiki](#).

FMP Demonstration

- This application shows how to use LE and the GATT profile. This sample implements the find me profile (FMP) using the GATT profile. This sample acts as an LE master and an LE slave.
- For a step-by-step demonstration of how to run this application, visit the [FMP demo wiki](#).

Revision History

NOTE: Page numbers for previous revisions may differ from page numbers in the current version.

Changes from April 12, 2016 to October 30, 2017	Page
• Changed formatting per updated standards	1
• Changed the link to Bluetooth software development kit (SDK)	8

Changes from March 16, 2016 to April 11, 2016	Page
• Updated Samples link.....	9
• Added Step 5 to <i>Building and Flashing the Bluetooth Code (MSP-EXP432P401R)</i>	10
• Updated Samples link.	12
• Updated Samples link.	15

IMPORTANT NOTICE FOR TI DESIGN INFORMATION AND RESOURCES

Texas Instruments Incorporated ("TI") technical, application or other design advice, services or information, including, but not limited to, reference designs and materials relating to evaluation modules, (collectively, "TI Resources") are intended to assist designers who are developing applications that incorporate TI products; by downloading, accessing or using any particular TI Resource in any way, you (individually or, if you are acting on behalf of a company, your company) agree to use it solely for this purpose and subject to the terms of this Notice.

TI's provision of TI Resources does not expand or otherwise alter TI's applicable published warranties or warranty disclaimers for TI products, and no additional obligations or liabilities arise from TI providing such TI Resources. TI reserves the right to make corrections, enhancements, improvements and other changes to its TI Resources.

You understand and agree that you remain responsible for using your independent analysis, evaluation and judgment in designing your applications and that you have full and exclusive responsibility to assure the safety of your applications and compliance of your applications (and of all TI products used in or for your applications) with all applicable regulations, laws and other applicable requirements. You represent that, with respect to your applications, you have all the necessary expertise to create and implement safeguards that (1) anticipate dangerous consequences of failures, (2) monitor failures and their consequences, and (3) lessen the likelihood of failures that might cause harm and take appropriate actions. You agree that prior to using or distributing any applications that include TI products, you will thoroughly test such applications and the functionality of such TI products as used in such applications. TI has not conducted any testing other than that specifically described in the published documentation for a particular TI Resource.

You are authorized to use, copy and modify any individual TI Resource only in connection with the development of applications that include the TI product(s) identified in such TI Resource. NO OTHER LICENSE, EXPRESS OR IMPLIED, BY ESTOPPEL OR OTHERWISE TO ANY OTHER TI INTELLECTUAL PROPERTY RIGHT, AND NO LICENSE TO ANY TECHNOLOGY OR INTELLECTUAL PROPERTY RIGHT OF TI OR ANY THIRD PARTY IS GRANTED HEREIN, including but not limited to any patent right, copyright, mask work right, or other intellectual property right relating to any combination, machine, or process in which TI products or services are used. Information regarding or referencing third-party products or services does not constitute a license to use such products or services, or a warranty or endorsement thereof. Use of TI Resources may require a license from a third party under the patents or other intellectual property of the third party, or a license from TI under the patents or other intellectual property of TI.

TI RESOURCES ARE PROVIDED "AS IS" AND WITH ALL FAULTS. TI DISCLAIMS ALL OTHER WARRANTIES OR REPRESENTATIONS, EXPRESS OR IMPLIED, REGARDING TI RESOURCES OR USE THEREOF, INCLUDING BUT NOT LIMITED TO ACCURACY OR COMPLETENESS, TITLE, ANY EPIDEMIC FAILURE WARRANTY AND ANY IMPLIED WARRANTIES OF MERCHANTABILITY, FITNESS FOR A PARTICULAR PURPOSE, AND NON-INFRINGEMENT OF ANY THIRD PARTY INTELLECTUAL PROPERTY RIGHTS.

TI SHALL NOT BE LIABLE FOR AND SHALL NOT DEFEND OR INDEMNIFY YOU AGAINST ANY CLAIM, INCLUDING BUT NOT LIMITED TO ANY INFRINGEMENT CLAIM THAT RELATES TO OR IS BASED ON ANY COMBINATION OF PRODUCTS EVEN IF DESCRIBED IN TI RESOURCES OR OTHERWISE. IN NO EVENT SHALL TI BE LIABLE FOR ANY ACTUAL, DIRECT, SPECIAL, COLLATERAL, INDIRECT, PUNITIVE, INCIDENTAL, CONSEQUENTIAL OR EXEMPLARY DAMAGES IN CONNECTION WITH OR ARISING OUT OF TI RESOURCES OR USE THEREOF, AND REGARDLESS OF WHETHER TI HAS BEEN ADVISED OF THE POSSIBILITY OF SUCH DAMAGES.

You agree to fully indemnify TI and its representatives against any damages, costs, losses, and/or liabilities arising out of your non-compliance with the terms and provisions of this Notice.

This Notice applies to TI Resources. Additional terms apply to the use and purchase of certain types of materials, TI products and services. These include; without limitation, TI's standard terms for semiconductor products (<http://www.ti.com/sc/docs/stdterms.htm>), [evaluation modules](#), and [samples](http://www.ti.com/sc/docs/sampterm.htm) (<http://www.ti.com/sc/docs/sampterm.htm>).

Mailing Address: Texas Instruments, Post Office Box 655303, Dallas, Texas 75265
Copyright © 2017, Texas Instruments Incorporated