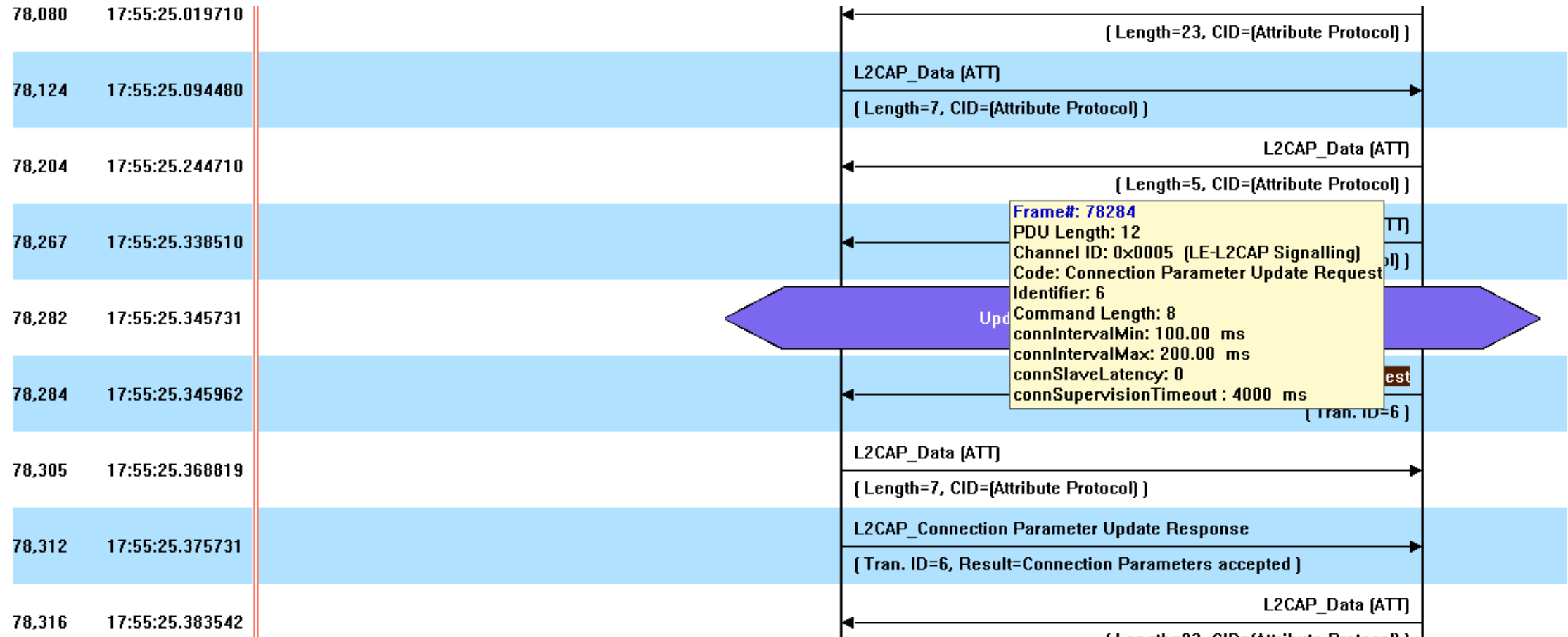


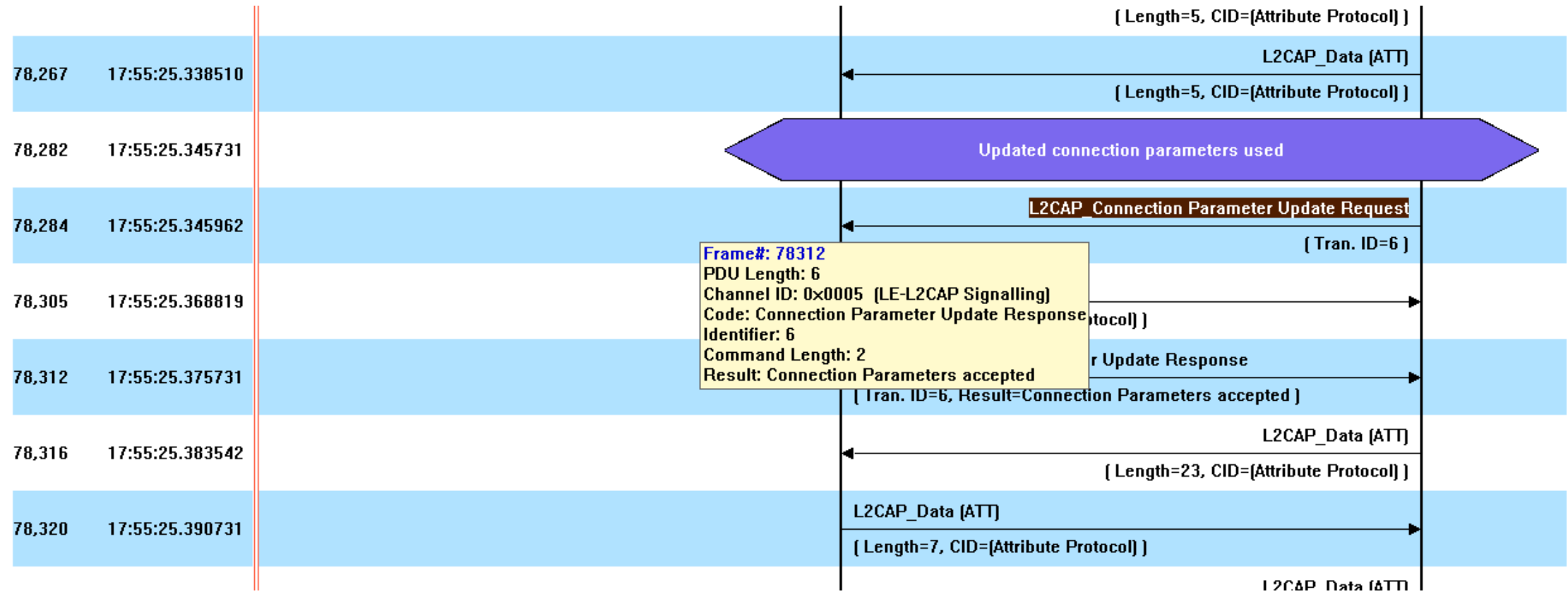
BLE Problem – Not able to change the connection interval

Samsung Galaxy S8

Connection Interval Request (from device)



Connection Interval Response(from S8)



Connection Interval was changed to 75ms according to Device Request

6,324	S	0xaf9aabed	LL_FEATURE_RSP		17:53:41.912812
6,385	M	0xaf9aabed	LL_CONNECTION_UPDATE_REQ		17:53:41.987494
6,744	M	0xaf9aabed	LL_VERSION_IND		17:53:42.449996
18,313	M	0xaf9aabed	LL_TERMINATE_IND		17:53:57.465659
77,005	M		CONNECT_REQ		17:55:23.445198
77,029	M	0x50655d95	LL_FEATURE_REQ		17:55:23.484472
77,099	S	0x50655d95	LL_FEATURE_RSP		17:55:23.582283
77,136	M	0x50655d95	LL_CONNECTION_UPDATE_REQ		17:55:23.630723
77,163	S	0x50655d95	LL_VERSION_IND	Bluetooth Core Specification 4.1	17:55:23.679800
77,613	M	0x50655d95	LL_FEATURE_REQ		17:55:24.345009
77,751	S	0x50655d95	LL_FEATURE_RSP		17:55:24.569796
77,819	M	0x50655d95	LL_CONNECTION_UPDATE_REQ		17:55:24.644478
77,873	M	0x50655d95	LL_FEATURE_RSP		17:55:24.719804
77,940	M	0x50655d95	LL_CONNECTION_UPDATE_REQ		17:55:24.794479
78,263	M	0x50655d95	LL_VERSION_IND	Reserved [9]	17:55:25.330731

Frame#: 77136
Control Pkt: LL_CONNECTION_UPDATE_REQ
transmitWindowSize: 3.75 ms
transmitWindowOffset: 53.75 ms
connInterval: 75.00 ms
connSlaveLatency: 0
connSupervisionTimeout: 4000 ms
connInstant: 0x000f

S8 overwrite connection interval to 7.5ms shortly after (< 1 second)

77,005	M		CONNECT_REQ	New connection	17:55:23.445198
77,029	M	0x50655d95	LL_FEATURE_RE	<div>Frame#: 77819 Control Pkt: LL_CONNECTION_UPDATE_REQ transmitWindowSize: 3.75 ms transmitWindowOffset: 3.75 ms connInterval: 7.50 ms connSlaveLatency: 0 connSupervisionTimeout: 20000 ms connInstant: 0x001d</div>	17:55:23.484472
77,099	S	0x50655d95	LL_FEATURE_RS		17:55:23.582283
77,136	M	0x50655d95	LL_CONNECTION		17:55:23.630723
77,163	S	0x50655d95	LL_VERSION_IND		17:55:23.679800
77,613	M	0x50655d95	LL_FEATURE_RE		17:55:24.345009
77,751	S	0x50655d95	LL_FEATURE_RS		17:55:24.569796
77,819	M	0x50655d95	LL_CONNECTION_UPDATE_REQ		17:55:24.644478
77,873	M	0x50655d95	LL_FEATURE_RSP		17:55:24.719804
77,940	M	0x50655d95	LL_CONNECTION_UPDATE_REQ		17:55:24.794479
78,263	M	0x50655d95	LL_VERSION_IND	Reserved [9]	17:55:25.330731

S8 (series of connection interval update event)

77,005	M		CONNECT_REQ		New connection	17:55:23.445198
77,029	M	0x50655d95	LL_FEATURE_REQ			17:55:23.484472
77,099	S	0x50655d95	LL_FEATURE_RSP			17:55:23.582283
77,136	M	0x50655d95	LL_CONNECTION_UPDATE_REQ	75ms		17:55:23.630723
77,163	S	0x50655d95	LL_VERSION_IND		Bluetooth Core Specification 4.1	17:55:23.679800
77,613	M	0x50655d95	LL_FEATURE_REQ			17:55:24.345009
77,751	S	0x50655d95	LL_FEATURE_RSP			17:55:24.569796
77,819	M	0x50655d95	LL_CONNECTION_UPDATE_REQ	7.5ms		17:55:24.644478
77,873	M	0x50655d95	LL_FEATURE_RSP			17:55:24.719804
77,940	M	0x50655d95	LL_CONNECTION_UPDATE_REQ	7.5ms		17:55:24.794479
78,263	M	0x50655d95	LL_VERSION_IND		Reserved [9]	17:55:25.330731
88,841	M		CONNECT_REQ		New connection	17:55:37.442158

Device initiate (100ms, 200ms), S8 respond 7.5ms