
Document Type: Schematic Review

Customer Name: Wistron

TI Product No: CC2340R5

Reviewed By: Jake Pulliam

Date: 2023-08-24

JIRA Ticket: SLWIFHWAPPS-762

Customer Project Details

- Schematic file received: BLE_SCH.pdf
- Layout file received: BLE_Gerber.7z

Reference Documents

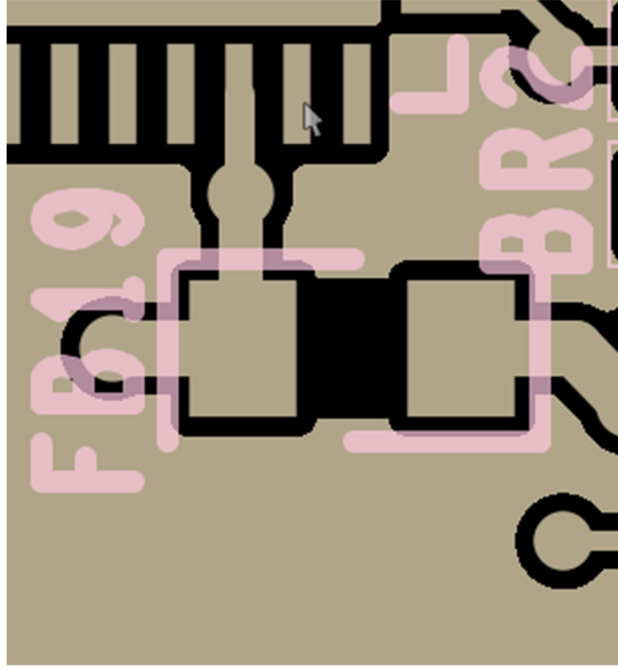
| Document ID | Title | Reference for |
|-------------|---------------------|---------------|
| SWRS272C | CC2340R5 data sheet | |
| | | |
| | | |
| | | |

Schematic Review

- Pin 18 (DIO22) doesn't support UART TX
- Pin 20 (DIO24) doesn't support UART function
- Pin 25 (RESET) Typically use a pull-up rather than a pull-down since reset is active low

Layout Review

- **VDDS**
 - Place one decoupling capacitor close to each VDDS pin on same side as device



- VDDD
 - Prefer to place **decoupling capacitor** on the same side as the CC2340R5 device
- DCDC
 - Prefer to place output inductor and capacitor BL1 and BC16 close together, on the same side of the board and close to pin 30
- VDDR
 - Prefer to place **decoupling capacitor** on the same side as the CC2340R5 device