



How to Revive a USB Audio EVM

Applies to:

- [TLV320AIC3254EVM-K](#)
- [TLV320AIC3254EVM-U](#)
- [TLV320AIC3204EVM-K](#)
- [TLV320AIC3253EVM-K](#)
- [TLV320AIC3256EVM-U](#)
- [TLV320AIC3206EVM-U](#)
- [TLV320AIC36EVM-K](#)
- [TLV320ADC3101EVM-K](#)
- [TLV320DAC3203EVM-K](#)
- [PCM3070RHBEVM-K](#)
- [TLV320AIC3212EVM-U](#)
- [TLV320AIC3262EVM-U](#)
- [TLV320AIC3268EVM-U](#)

IMPORTANT: Before proceeding, ensure that the jumpers are set to their default positions. Refer to the EVM User Guide by clicking the link of the appropriate EVM above.

If the USB Active LED does not lit on the EVM and does not enumerate as a USB Audio device, follow these steps:

1. **Download** the USBfirmware files:

- For TLV320AIC/DAC/ADC EVMs:
<http://www.ti.com/lit/zip/slac563>.
- For TAS/PCM EVMs and PurePath Console Motherboard:
<http://www.ti.com/lit/zip/sloc305>.

2. **Remove** the USB cable from the EVM board.

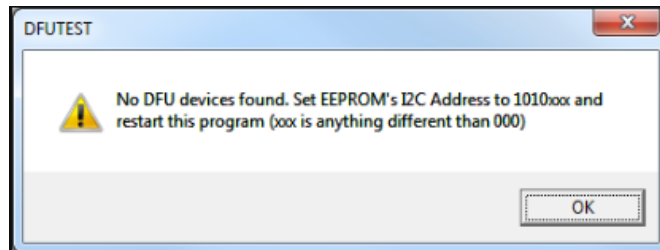
3. **Short** SDA and SCL lines by shorting the EEPROM SDA and SCL pins (**NOT** test points).

4. **Connect** the USB cable to the EVM board.

5. After 5 seconds, **remove the short**.

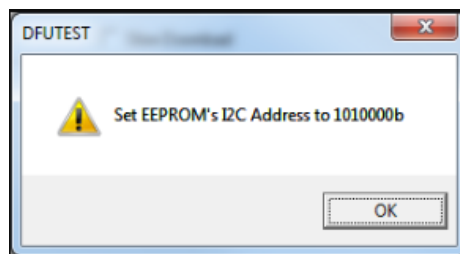
6. A "Found new Hardware" wizard will appear. The driver is in under *dfu_driver* inside the *USBfirmware* files obtained in step 1.

7. **Run** *DFUTEST.exe* as administrator, it is found inside the *USBfirmware* files obtained in step 1. If the message below appears, repeat steps 2-6.



8. **Click** the Program EVM button. **Browse** for the *DFUEE.bin* file located in the *image* directory. **Click** Open.

9. The following message will appear. **Click** OK.



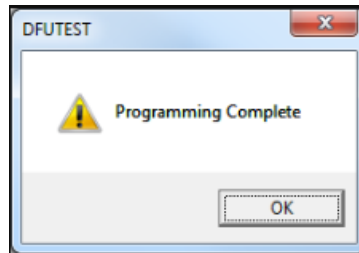
10. A "*Download completed*" message will appear. **Click** OK.

11. A "*Device was successfully reset...*" message will appear. **Wait** 2-3 seconds before clicking OK. If a "*Found new hardware wizard*" appears, install the DFU driver as explained in Step 6.

12. A "*Detach call succeeded. Please...*" message will appear. **Wait** 2-3 seconds before clicking OK. If a "*Found new hardware wizard appears*", install the DFU driver as explained in Step 6.

13. **Browse** for the desired firmware image file (like *USB-xxxx_441KHZ.bin*) located in the *image* directory. **Click** Open.

14. **Click** OK for the next two windows. The last window will look like the one below.



15. **Click** OK and **close** the DFUTEST program.

16. **Run** *remove-miniEVM.exe* as administrator, it is found inside the *USBfirmware* files obtained above.

17. **Remove** and **re-connect** the USB cable.

18. The EVM is now ready for use.