

TAS5721 EVM + PPCMB setup

Install PPC 1.16

- Download and install Purepath Console 1.16 on the PC.
- More info about this software in this [link](#).

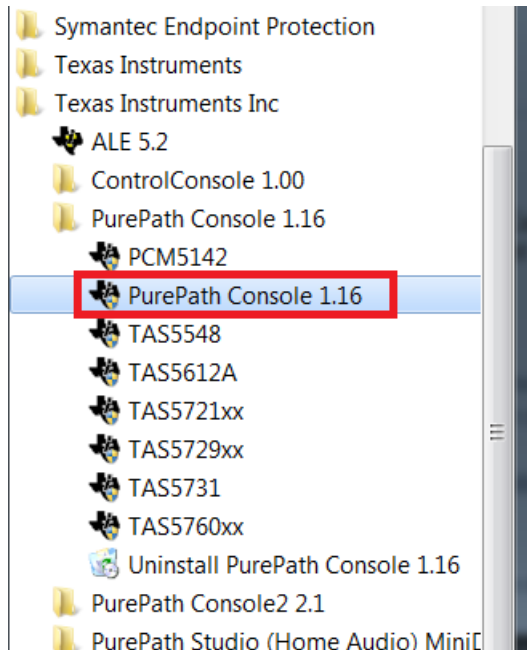
PurePath Console 1

Supported Devices: PCM5142, PCM5548/58, TAS5612A, TAS5721xx, TAS5729xx, TAS5731 and TAS5760xx.

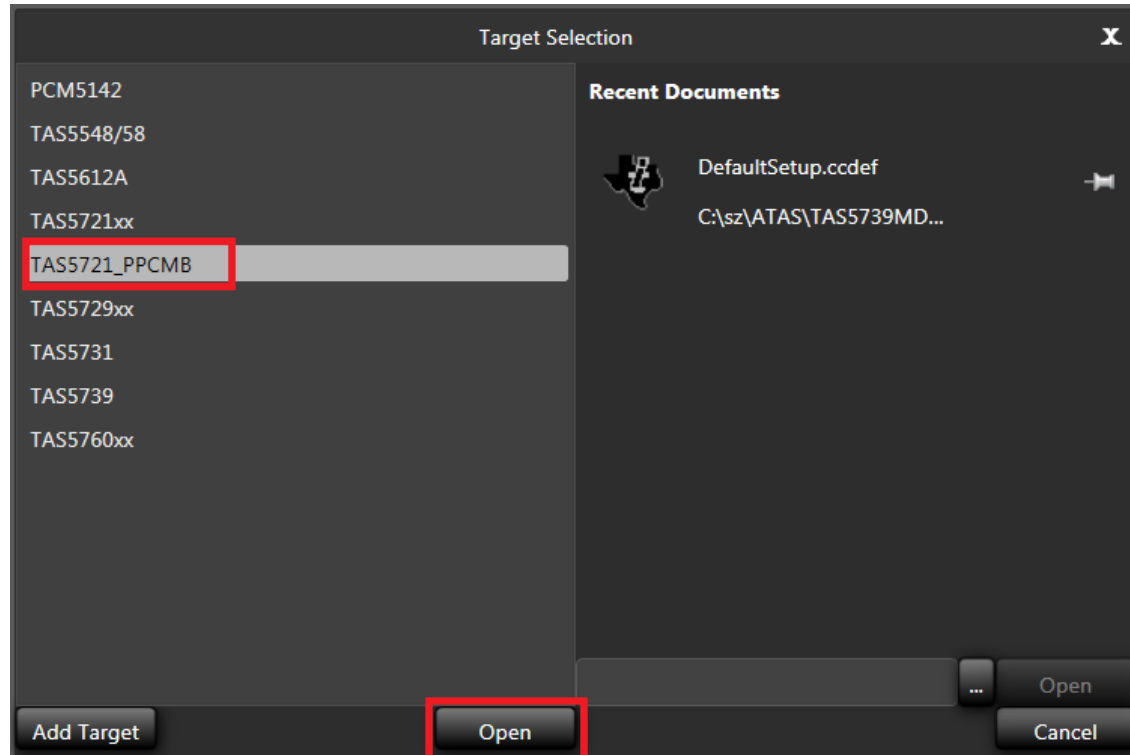
Software				
File	Description	Version	Date	Size
setup_PurePathConsole_Main_v1.16_rev35470.exe	PPC1 Software	1.16.35470	13-Mar-15	30 MB
PurePathConsole_Quick_Start_Users_Guide.pdf	PPC1 Quick Start User's Guide	140527	27-May-14	1.3 MB
fix_winsound.zip			22-Jan-15	431 B
PurePath_Console_v1.16_manifest.html	PPC1 License Manifest		11-Jun-15	18.5 KB

Start PPC 1.16

- Please click 'PurePath Console 1.16' in Windows Start menu



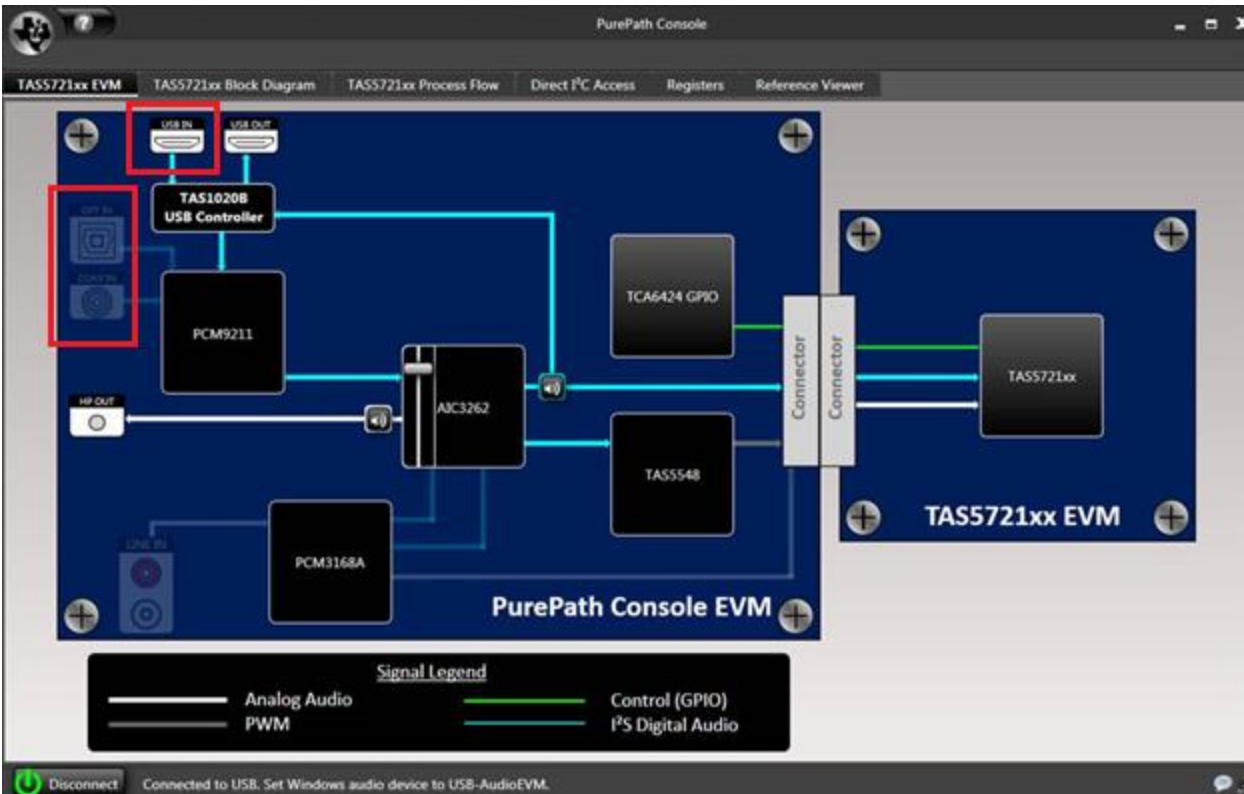
Select TAS5721_PPCMB plugin



- Select 'TAS5721_PPCMB' in the 'Target Selection' tab, and click 'Open'.

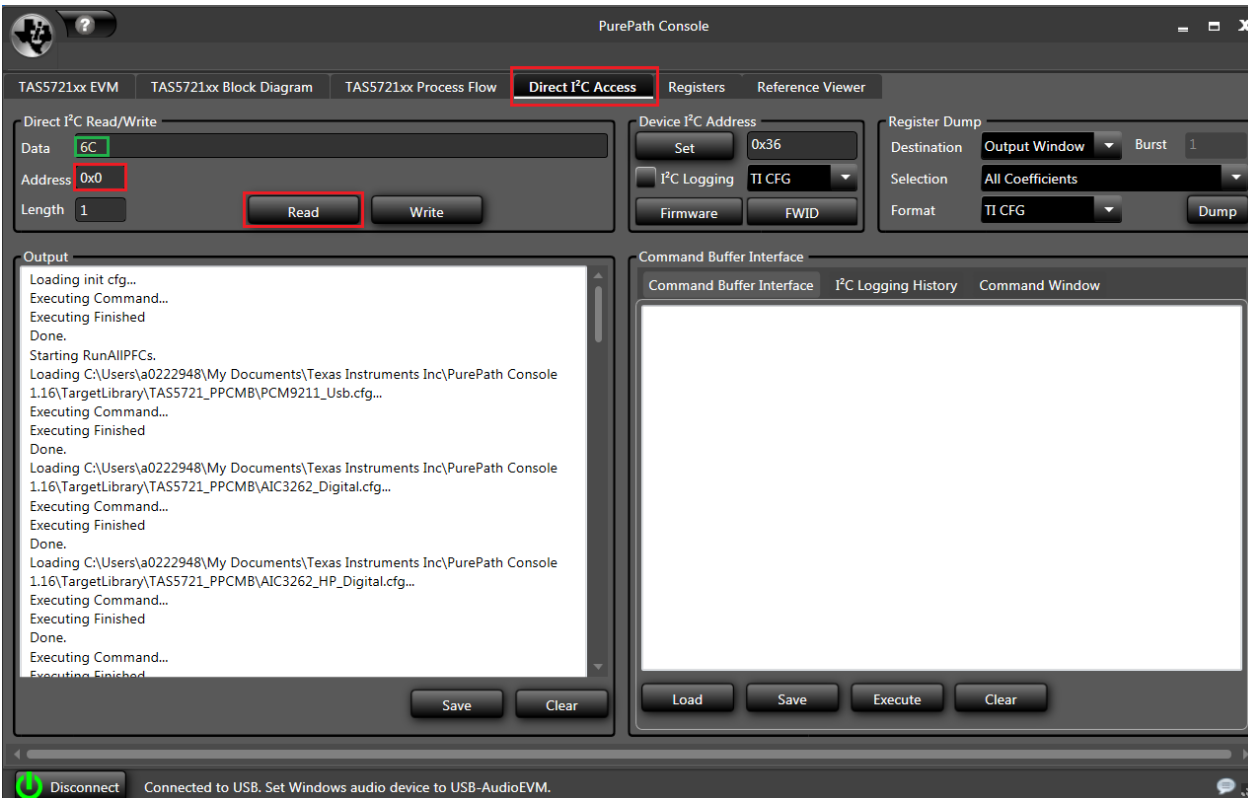
TAS5721 GUI

- You will get the right GUI
- The input source can be switched to USB/OPT/COAX by clicking the icon in the red circles.



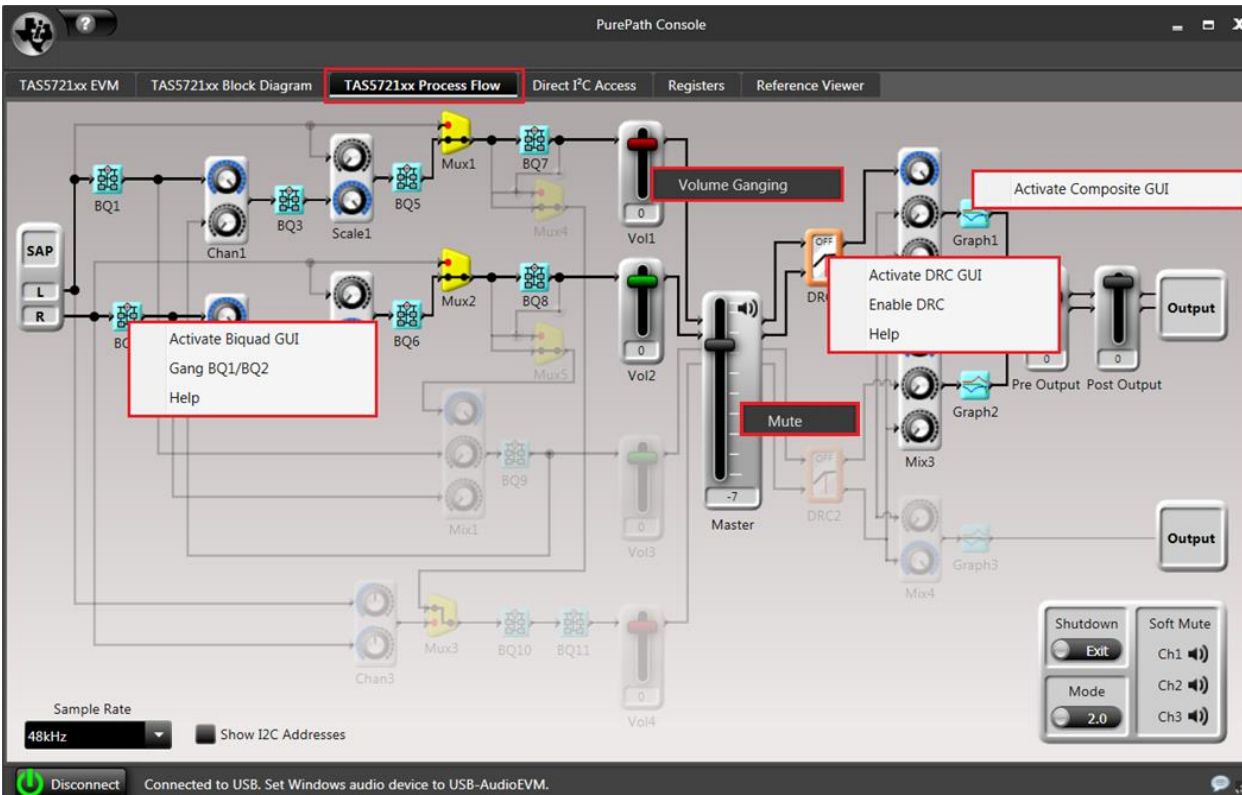
TAS5721 I2C access

- Select the 'Direct I2C Access' page, and type '0x00' in 'Address' column. Click 'Read', and the read-back 'Data' should be '0x6C', which means I2C communication is good.



TAS5721 BQ/DRC/Volume

- In 'TAS5721xx Process Flow' Page, detailed setting can be configured by right-clicking on 'BQ'/'DRC'/'Volume' icon.



TAS5721 Shutdown & Mode & MUX

- Entering/exiting shutdown mode can be selected in the blue circle. And output Mode can be selected in the green circle.
- The MUX can be configured after double-clicking the icon.

